

Home report

1027 Windsor Avenue Southwest, Wasena, Roanoke, Roanoke city, Virginia, United States, 24015



Total Area: 1410 sq. ft
Floor 1: 861 sq. ft, Floor 2: 549 sq. ft
Excluded: Porch 35 sq. ft, Deck 147 sq. ft, Open to below 312 sq. ft, Walls: 119 sq. ft

Property summary

 **2** Floors

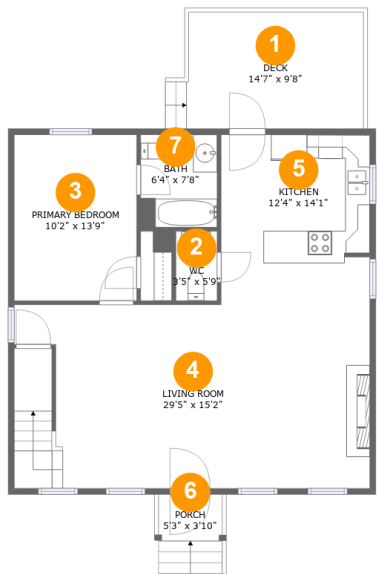
 **3** Bedrooms

 **2** Bathrooms

 **1** Half baths

Home report

1027 Windsor Avenue Southwest, Wasena, Roanoke, Roanoke city, Virginia, United States, 24015



Room dimensions

Floor 1

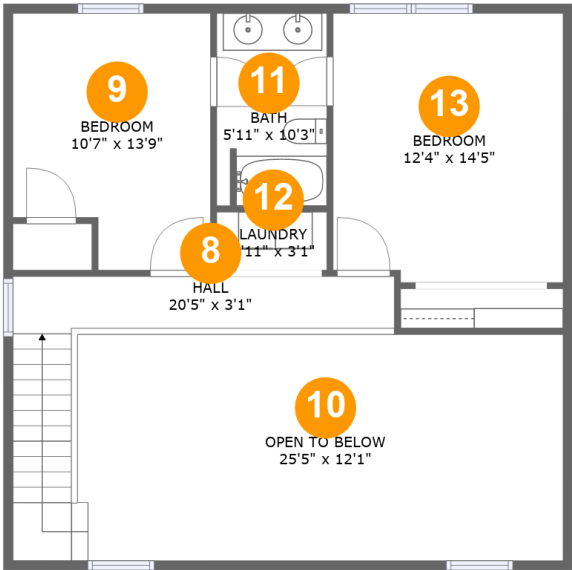
Total:861sqft

Excluded: 182sqft

#		Max Dimensions	sqft	Included
1	Deck	14'7" x 9'8"	147 sq. ft	No
2	WC	3'5" x 5'9"	20 sq. ft	Yes
3	Primary Bedroom	10'2" x 13'9"	139 sq. ft	Yes
4	Living Room	29'5" x 15'2"	444 sq. ft	Yes
5	Kitchen	12'4" x 14'1"	172 sq. ft	Yes
6	Porch	5'3" x 3'10"	35 sq. ft	No
7	Bath	6'4" x 7'8"	48 sq. ft	Yes

Home report

1027 Windsor Avenue Southwest, Wasena, Roanoke, Roanoke city, Virginia, United States, 24015



Room dimensions

Floor 2

Total:549sqft

Excluded: 312sqft

#		Max Dimensions	sqft	Included
8	Hall	20'5" x 3'1"	107 sq. ft	Yes
9	Bedroom	10'7" x 13'9"	132 sq. ft	Yes
10	Open To Below	25'5" x 12'1"	312 sq. ft	No
11	Bath	5'11" x 10'3"	60 sq. ft	Yes
12	Laundry	5'11" x 3'1"	18 sq. ft	Yes
13	Bedroom	12'4" x 14'5"	175 sq. ft	Yes

1027 Windsor Avenue Southwest, Wasena, Roanoke, Roanoke city, Virginia, United States, 24015

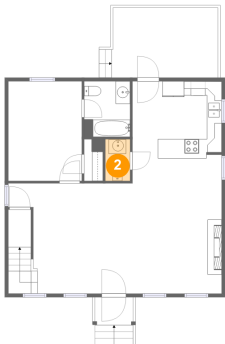
1 Floor 1 - Deck



Max Dimensions: 14'7" x 9'8"
Calculated Area: 147 sq. ft
Included: No

Heated: No
Finished: Yes
Enclosed: No
Contiguous: Yes
Permitted: Yes
Wet space: No
Addition: No
Conversion: No

2 Floor 1 - WC

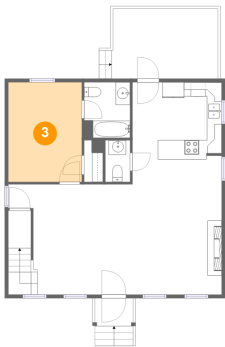


Max Dimensions: 3'5" x 5'9"
Calculated Area: 20 sq. ft
Included: Yes

Heated: Yes
Finished: Yes
Enclosed: Yes
Contiguous: Yes
Permitted: Yes
Wet space: Yes
Addition: No
Conversion: No

1027 Windsor Avenue Southwest, Wasena, Roanoke, Roanoke city, Virginia, United States, 24015

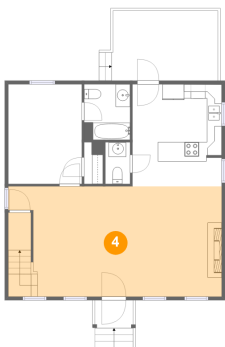
3 Floor 1 - Primary Bedroom



Max Dimensions: 10'2" x 13'9"
Calculated Area: 139 sq. ft
Included: Yes

Heated: Yes
Finished: Yes
Enclosed: Yes
Contiguous: Yes
Permitted: Yes
Wet space: No
Addition: No
Conversion: No

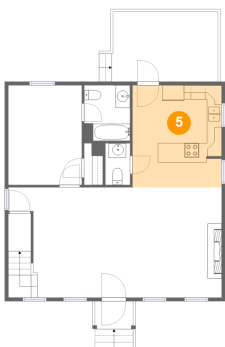
4 Floor 1 - Living Room



Max Dimensions: 29'5" x 15'2"
Calculated Area: 444 sq. ft
Included: Yes

Heated: Yes
Finished: Yes
Enclosed: Yes
Contiguous: Yes
Permitted: Yes
Wet space: No
Addition: No
Conversion: No

5 Floor 1 - Kitchen



Max Dimensions: 12'4" x 14'1"
Calculated Area: 172 sq. ft
Included: Yes

Heated: Yes
Finished: Yes
Enclosed: Yes
Contiguous: Yes
Permitted: Yes
Wet space: No
Addition: No
Conversion: No

1027 Windsor Avenue Southwest, Wasena, Roanoke, Roanoke city, Virginia, United States, 24015

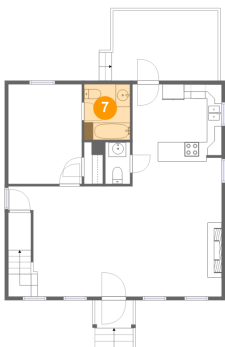
6 Floor 1 - Porch



Max Dimensions: 5'3" x 3'10"
Calculated Area: 35 sq. ft
Included: No

Heated: No
Finished: Yes
Enclosed: No
Contiguous: Yes
Permitted: Yes
Wet space: No
Addition: No
Conversion: No

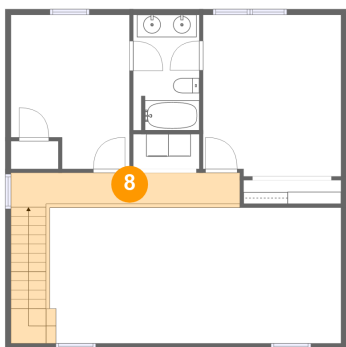
7 Floor 1 - Bath



Max Dimensions: 6'4" x 7'8"
Calculated Area: 48 sq. ft
Included: Yes

Heated: Yes
Finished: Yes
Enclosed: Yes
Contiguous: Yes
Permitted: Yes
Wet space: Yes
Addition: No
Conversion: No

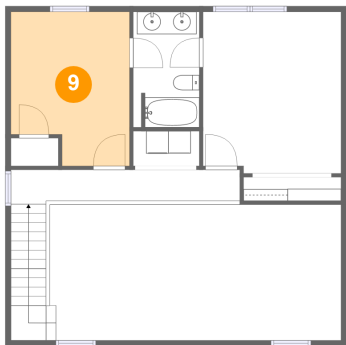
8 Floor 2 - Hall



Max Dimensions: 20'5" x 3'1"
Calculated Area: 107 sq. ft
Included: Yes

Heated: Yes
Finished: Yes
Enclosed: Yes
Contiguous: Yes
Permitted: Yes
Wet space: No
Addition: No
Conversion: No

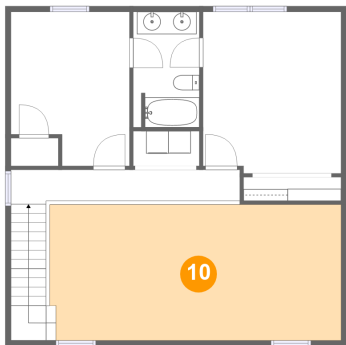
9 Floor 2 - Bedroom



Max Dimensions: 10'7" x 13'9"
Calculated Area: 132 sq. ft
Included: Yes

Heated: Yes
Finished: Yes
Enclosed: Yes
Contiguous: Yes
Permitted: Yes
Wet space: No
Addition: No
Conversion: No

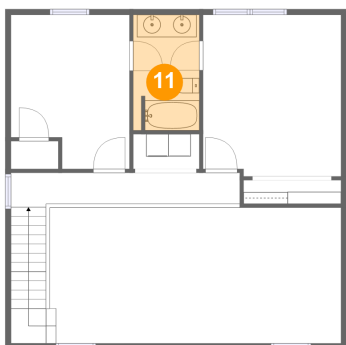
10 Floor 2 - Open To Below



Max Dimensions: 25'5" x 12'1"
Calculated Area: 312 sq. ft
Included: No

Heated: No
Finished: No
Enclosed: No
Contiguous: Yes
Permitted: No
Wet space: No
Addition: No
Conversion: No

11 Floor 2 - Bath

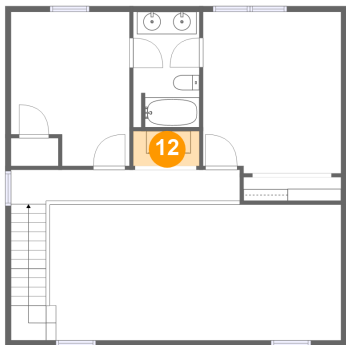


Max Dimensions: 5'11" x 10'3"
Calculated Area: 60 sq. ft
Included: Yes

Heated: Yes
Finished: Yes
Enclosed: Yes
Contiguous: Yes
Permitted: Yes
Wet space: Yes
Addition: No
Conversion: No

1027 Windsor Avenue Southwest, Wasena, Roanoke, Roanoke city, Virginia, United States, 24015

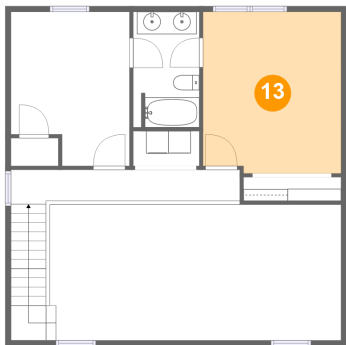
12 Floor 2 - Laundry



Max Dimensions: 5'11" x 3'1"
Calculated Area: 18 sq. ft
Included: Yes

Heated: Yes
Finished: Yes
Enclosed: Yes
Contiguous: Yes
Permitted: Yes
Wet space: No
Addition: No
Conversion: No

13 Floor 2 - Bedroom



Max Dimensions: 12'4" x 14'5"
Calculated Area: 175 sq. ft
Included: Yes

Heated: Yes
Finished: Yes
Enclosed: Yes
Contiguous: Yes
Permitted: Yes
Wet space: No
Addition: No
Conversion: No