



328 Addie Way, Lynchburg, Campbell County, Virginia,
United States, 24501




Property summary




0
Garages



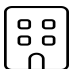
4
Bedrooms




3
Bathrooms




0
Half baths



2
Floors

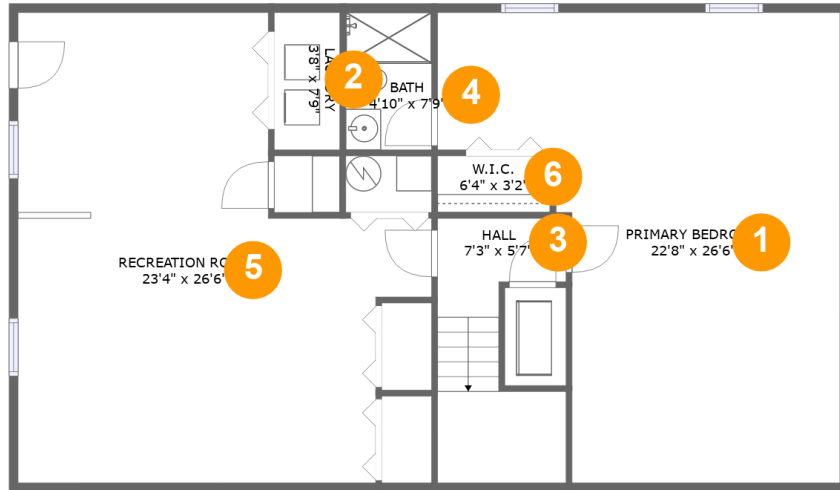


2,674
Gross living
area sqft



2,853
Total sqft

328 Addie Way, Lynchburg, Campbell County, Virginia,
United States, 24501



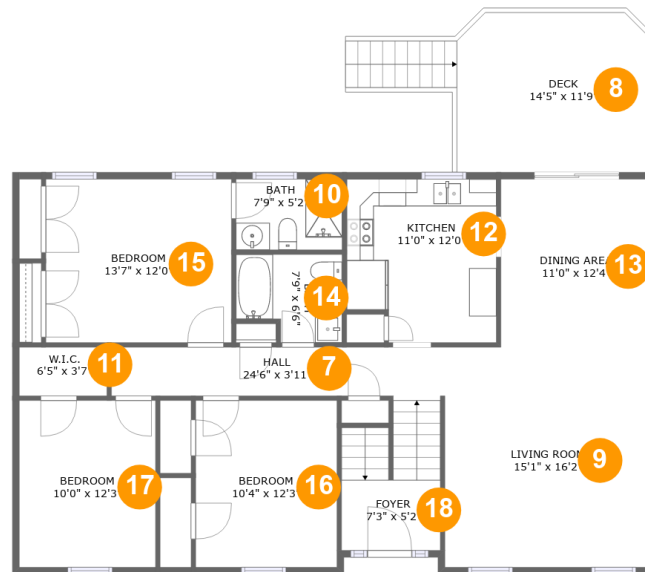
Room dimensions

Floor 1

Total sqft: 1302 Living area: 1287

#		Dimensions	sqft	Counted as living area
1	Primary Bedroom	22'8" x 26'6"	462 sq. ft	Yes
2	Laundry	3'8" x 7'9"	29 sq. ft	Yes
3	Hall	7'3" x 5'7"	85 sq. ft	Yes
4	Bath	4'10" x 7'9"	38 sq. ft	Yes
5	Recreation Room	23'4" x 26'6"	478 sq. ft	Yes
6	W.I.C.	6'4" x 3'2"	20 sq. ft	Yes

**328 Addie Way, Lynchburg, Campbell County, Virginia,
United States, 24501**



Room dimensions

Floor 2

Total sqft: 1551 Living area: 1387

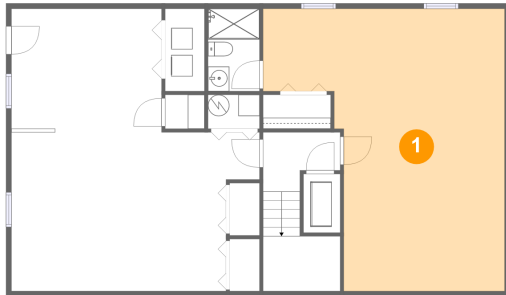
#		Dimensions	sqft	Counted as living area
7	Hall	24'6" x 3'11"	89 sq. ft	Yes
8	Deck	14'5" x 11'9"	164 sq. ft	No
9	Living Room	15'1" x 16'2"	244 sq. ft	Yes
10	Bath	7'9" x 5'2"	40 sq. ft	Yes
11	W.I.C.	6'5" x 3'7"	23 sq. ft	Yes
12	Kitchen	11'0" x 12'0"	124 sq. ft	Yes
13	Dining Area	11'0" x 12'4"	136 sq. ft	Yes
14	Bath	7'9" x 6'6"	45 sq. ft	Yes
15	Bedroom	13'7" x 12'0"	163 sq. ft	Yes
16	Bedroom	10'4" x 12'3"	127 sq. ft	Yes
17	Bedroom	10'0" x 12'3"	122 sq. ft	Yes

328 Addie Way, Lynchburg, Campbell County, Virginia,
United States, 24501

#		Dimensions	sqft	Counted as living area
18	Foyer	7'3" x 5'2"	71 sq. ft	Yes

**328 Addie Way, Lynchburg, Campbell County, Virginia,
United States, 24501**

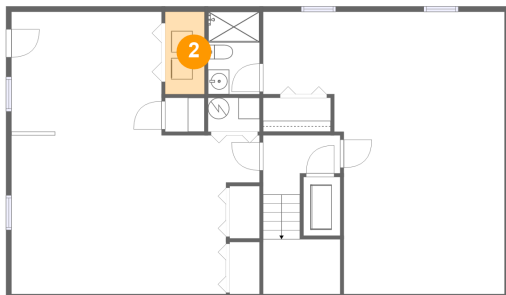
1 Floor 1 - Primary Bedroom



Dimensions: 22'8" x 26'6"
Area: 462 sq. ft
Counted as living area: Yes

Heated: Yes
Finished: Yes
Enclosed: Yes
Contiguous: Yes
Permitted: Yes
Wet space: No
Addition: No
Conversion: No

2 Floor 1 - Laundry

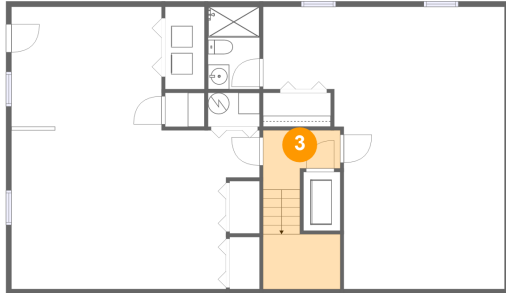


Dimensions: 3'8" x 7'9"
Area: 29 sq. ft
Counted as living area: Yes

Heated: Yes
Finished: Yes
Enclosed: Yes
Contiguous: Yes
Permitted: Yes
Wet space: No
Addition: No
Conversion: No

328 Addie Way, Lynchburg, Campbell County, Virginia,
United States, 24501

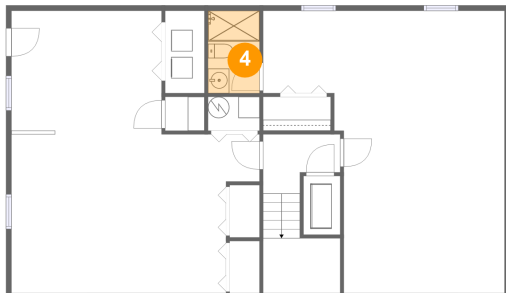
3 Floor 1 - Hall



Dimensions: 7'3" x 5'7"
Area: 85 sq. ft
Counted as living area: Yes

Heated: Yes
Finished: Yes
Enclosed: Yes
Contiguous: Yes
Permitted: Yes
Wet space: No
Addition: No
Conversion: No

4 Floor 1 - Bath



Dimensions: 4'10" x 7'9"
Area: 38 sq. ft
Counted as living area: Yes

Heated: Yes
Finished: Yes
Enclosed: Yes
Contiguous: Yes
Permitted: Yes
Wet space: Yes
Addition: No
Conversion: No

5 Floor 1 - Recreation Room

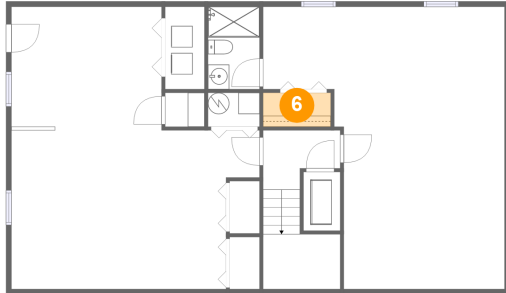


Dimensions: 23'4" x 26'6"
Area: 478 sq. ft
Counted as living area: Yes

Heated: Yes
Finished: Yes
Enclosed: Yes
Contiguous: Yes
Permitted: Yes
Wet space: No
Addition: No
Conversion: No

328 Addie Way, Lynchburg, Campbell County, Virginia,
United States, 24501

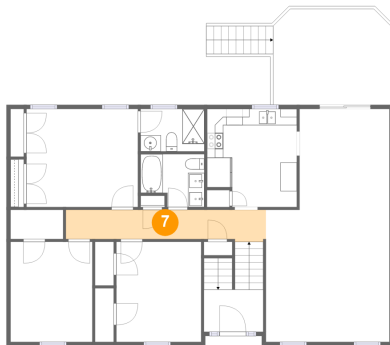
6 Floor 1 - W.I.C.



Dimensions: 6'4" x 3'2"
Area: 20 sq. ft
Counted as living area: Yes

Heated: Yes
Finished: Yes
Enclosed: Yes
Contiguous: Yes
Permitted: Yes
Wet space: No
Addition: No
Conversion: No

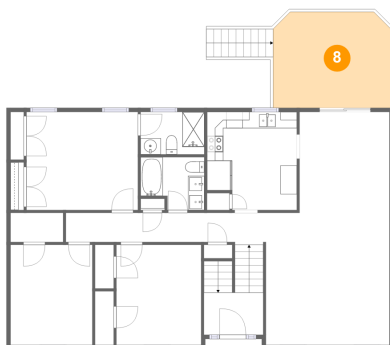
7 Floor 2 - Hall



Dimensions: 24'6" x 3'11"
Area: 89 sq. ft
Counted as living area: Yes

Heated: Yes
Finished: Yes
Enclosed: Yes
Contiguous: Yes
Permitted: Yes
Wet space: No
Addition: No
Conversion: No

8 Floor 2 - Deck

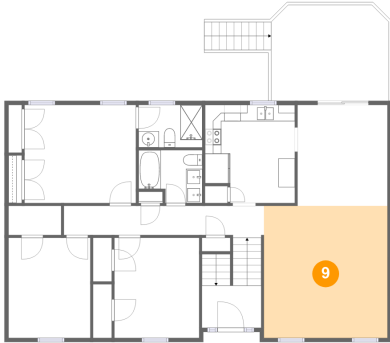


Dimensions: 14'5" x 11'9"
Area: 164 sq. ft
Counted as living area: No

Heated: No
Finished: Yes
Enclosed: No
Contiguous: Yes
Permitted: Yes
Wet space: No
Addition: No
Conversion: No

328 Addie Way, Lynchburg, Campbell County, Virginia,
United States, 24501

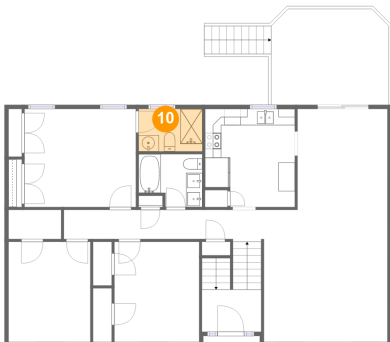
9 Floor 2 - Living Room



Dimensions: 15'1" x 16'2"
Area: 244 sq. ft
Counted as living area: Yes

Heated: Yes
Finished: Yes
Enclosed: Yes
Contiguous: Yes
Permitted: Yes
Wet space: No
Addition: No
Conversion: No

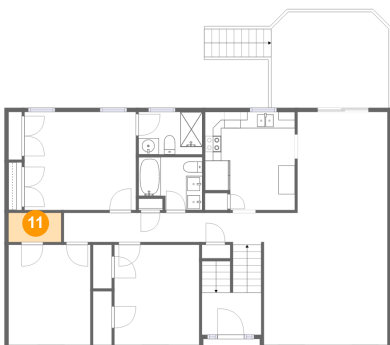
10 Floor 2 - Bath



Dimensions: 7'9" x 5'2"
Area: 40 sq. ft
Counted as living area: Yes

Heated: Yes
Finished: Yes
Enclosed: Yes
Contiguous: Yes
Permitted: Yes
Wet space: Yes
Addition: No
Conversion: No

11 Floor 2 - W.I.C.

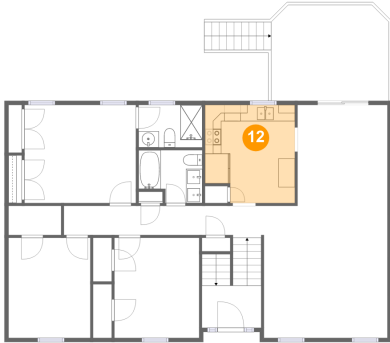


Dimensions: 6'5" x 3'7"
Area: 23 sq. ft
Counted as living area: Yes

Heated: Yes
Finished: Yes
Enclosed: Yes
Contiguous: Yes
Permitted: Yes
Wet space: No
Addition: No
Conversion: No

328 Addie Way, Lynchburg, Campbell County, Virginia,
United States, 24501

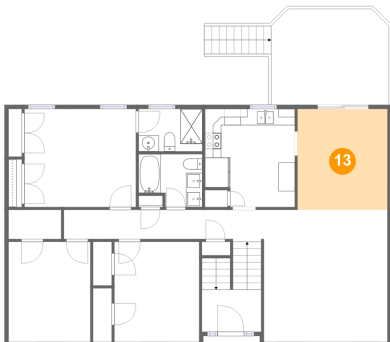
12 Floor 2 - Kitchen



Dimensions: 11'0" x 12'0"
Area: 124 sq. ft
Counted as living area: Yes

Heated: Yes
Finished: Yes
Enclosed: Yes
Contiguous: Yes
Permitted: Yes
Wet space: No
Addition: No
Conversion: No

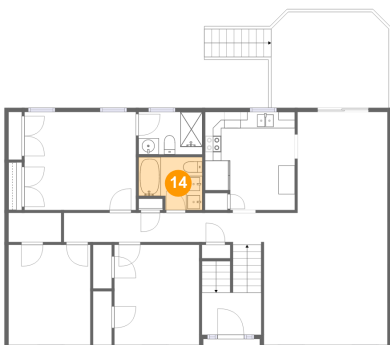
13 Floor 2 - Dining Area



Dimensions: 11'0" x 12'4"
Area: 136 sq. ft
Counted as living area: Yes

Heated: Yes
Finished: Yes
Enclosed: Yes
Contiguous: Yes
Permitted: Yes
Wet space: No
Addition: No
Conversion: No

14 Floor 2 - Bath

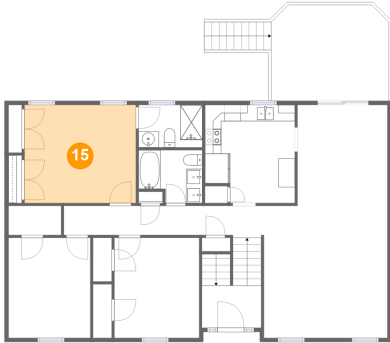


Dimensions: 7'9" x 6'6"
Area: 45 sq. ft
Counted as living area: Yes

Heated: Yes
Finished: Yes
Enclosed: Yes
Contiguous: Yes
Permitted: Yes
Wet space: Yes
Addition: No
Conversion: No

328 Addie Way, Lynchburg, Campbell County, Virginia,
United States, 24501

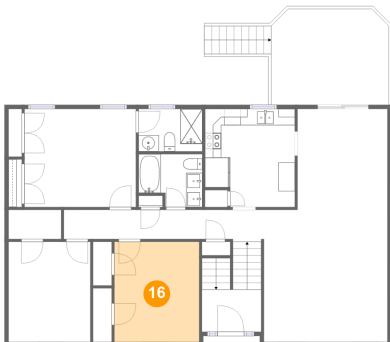
15 Floor 2 - Bedroom



Dimensions: 13'7" x 12'0"
Area: 163 sq. ft
Counted as living area: Yes

Heated: Yes
Finished: Yes
Enclosed: Yes
Contiguous: Yes
Permitted: Yes
Wet space: No
Addition: No
Conversion: No

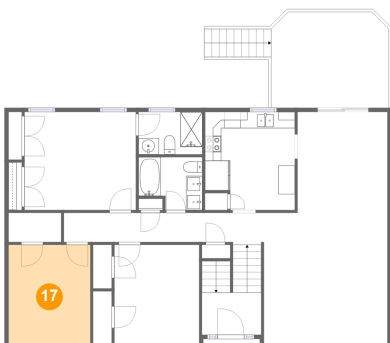
16 Floor 2 - Bedroom



Dimensions: 10'4" x 12'3"
Area: 127 sq. ft
Counted as living area: Yes

Heated: Yes
Finished: Yes
Enclosed: Yes
Contiguous: Yes
Permitted: Yes
Wet space: No
Addition: No
Conversion: No

17 Floor 2 - Bedroom

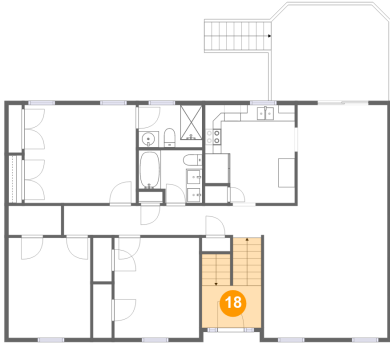


Dimensions: 10'0" x 12'3"
Area: 122 sq. ft
Counted as living area: Yes

Heated: Yes
Finished: Yes
Enclosed: Yes
Contiguous: Yes
Permitted: Yes
Wet space: No
Addition: No
Conversion: No

**328 Addie Way, Lynchburg, Campbell County, Virginia,
United States, 24501**

18 Floor 2 - Foyer



Dimensions: 7'3" x 5'2"
Area: 71 sq. ft
Counted as living area: Yes

Heated: Yes
Finished: Yes
Enclosed: Yes
Contiguous: Yes
Permitted: Yes
Wet space: No
Addition: No
Conversion: No