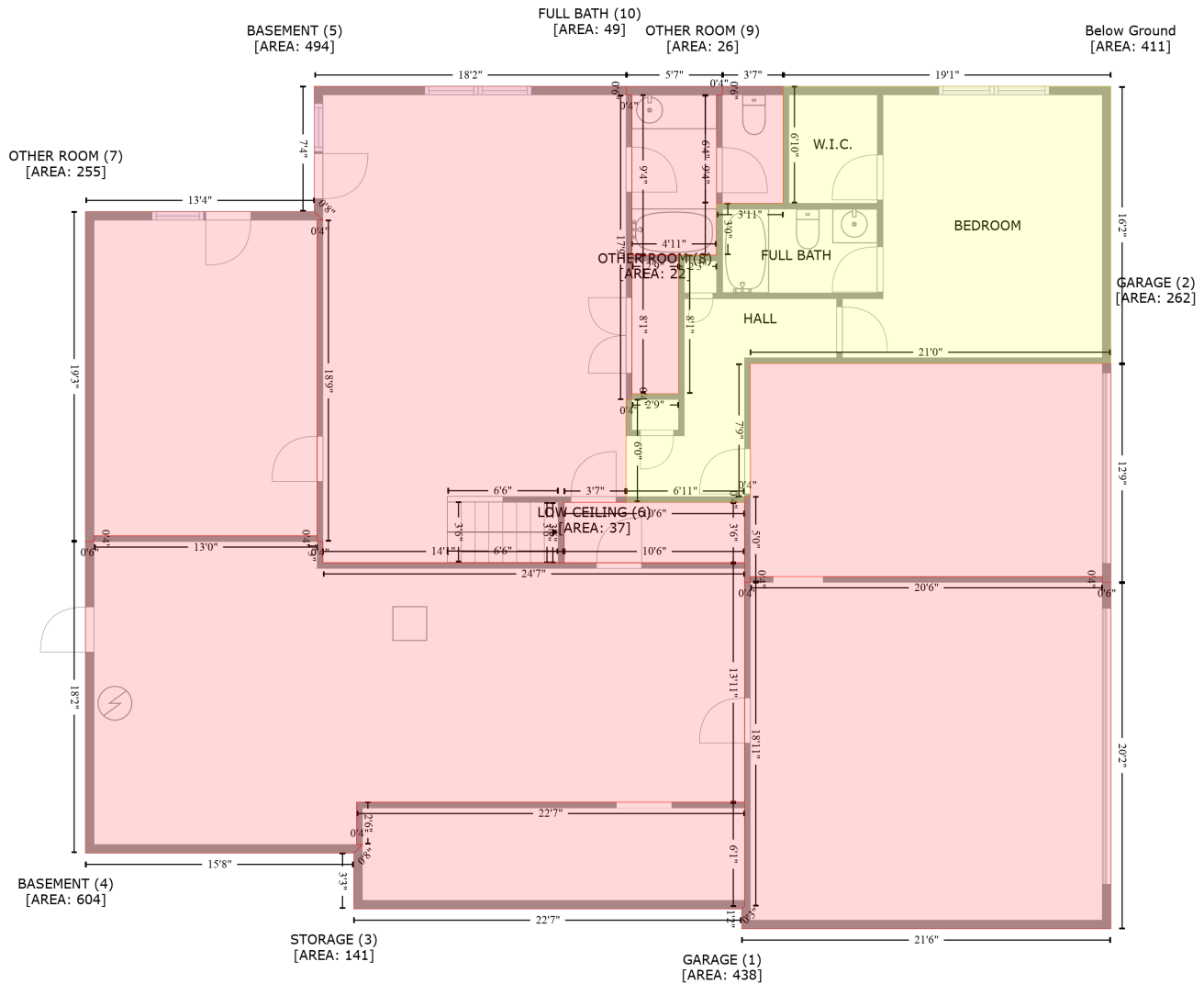


157 Inwood Trail, Skyline Acres, Madison, Madison County, Alabama, United States, 35758

Gross Living Area: 3460 sq. ft



Space	Area (sq. ft)	Calculation <small>Coordinate Polygon Area Algorithm using inches</small>
Below Ground (Living area)	411	$-\left((715.9 + 715.9) * (125.7 - 319.4) + (715.9 + 463.8) * (319.4 - 319.4) + (463.8 + 463.8) * (319.4 - 412.4) + (463.8 + 459.8) * (412.4 - 412.4) + (459.8 + 459.8) * (412.4 - 416.4) + (459.8 + 377) * (416.4 - 416.4) + (377 + 377) * (416.4 - 344.5) + (377 + 381) * (344.5 - 344.5) + (381 + 381) * (344.5 - 340.5) + (381 + 413.6) * (340.5 - 340.5) + (413.6 + 413.6) * (340.5 - 243.7) + (413.6 + 440.2) * (243.7 - 243.7) + (440.2 + 440.2) * (243.7 - 207.5) + (440.2 + 486.8) * (207.5 - 207.5) + (486.8 + 486.8) * (207.5 - 125.7) + (486.8 + 715.9) * (125.7 - 125.7)\right) * 0.5 * 0.00694$
GARAGE (Non-living area)	438	$-\left((709.9 + 709.9) * (468.3 - 472.3) + (709.9 + 715.9) * (472.3 - 472.3) + (715.9 + 715.9) * (472.3 - 714.5) + (715.9 + 457.8) * (714.5 - 714.5) + (457.8 + 457.8) * (714.5 - 700.6) + (457.8 + 459.8) * (700.6 - 698.8) + (459.8 + 459.8) * (698.8 - 472.3) + (459.8 + 463.8) * (472.3 - 472.3) + (463.8 + 463.8) * (472.3 - 468.3) + (463.8 + 709.9) * (468.3 - 468.3)\right) * 0.5 * 0.00694$
GARAGE	262	$-\left((715.9 + 715.9) * (319.4 - 472.3) + (715.9 + 709.9) * (472.3 - 472.3) + (709.9 + 709.9) * (472.3 - \right.$

157 Inwood Trail, Skyline Acres, Madison, Madison County, Alabama, United States, 35758

Gross Living Area: 3460 sq. ft

Space	Area (sq. ft)	Calculation <small>Coordinate Polygon Area Algorithm using inches</small>
(Non-living area)		$468.3 + (709.9 + 463.8) * (468.3 - 468.3) + (463.8 + 463.8) * (468.3 - 472.3) + (463.8 + 459.8) * (472.3 - 472.3) + (459.8 + 459.8) * (472.3 - 412.4) + (459.8 + 463.8) * (412.4 - 412.4) + (463.8 + 463.8) * (412.4 - 319.4) + (463.8 + 715.9) * (319.4 - 319.4) * 0.5 * 0.00694$
STORAGE (Non-living area)	141	$-((459.8 + 459.8) * (626 - 698.8) + (459.8 + 457.8) * (698.8 - 700.6) + (457.8 + 186.5) * (700.6 - 700.6) + (186.5 + 186.5) * (700.6 - 661.6) + (186.5 + 192.5) * (661.6 - 655.6) + (192.5 + 188.5) * (655.6 - 655.6) + (188.5 + 188.5) * (655.6 - 626) + (188.5 + 459.8) * (626 - 626)) * 0.5 * 0.00694$
BASEMENT (Non-living area)	604	$-((160.9 + 160.9) * (439.8 - 443.8) + (160.9 + 164.9) * (443.8 - 443.8) + (164.9 + 164.9) * (443.8 - 458.6) + (164.9 + 459.8) * (458.6 - 458.6) + (459.8 + 459.8) * (458.6 - 626) + (459.8 + 188.5) * (626 - 626) + (188.5 + 188.5) * (626 - 655.6) + (188.5 + 192.5) * (655.6 - 655.6) + (192.5 + 186.5) * (655.6 - 661.6) + (186.5 + -1.1) * (661.6 - 661.6) + (-1.1 + -1.1) * (661.6 - 443.8) + (-1.1 + 4.9) * (443.8 - 443.8) + (4.9 + 4.9) * (443.8 - 439.8) + (4.9 + 160.9) * (439.8 - 439.8)) * 0.5 * 0.00694$
BASEMENT (Non-living area)	494	$-((377 + 377) * (125.7 - 131.7) + (377 + 381) * (131.7 - 131.7) + (381 + 381) * (131.7 - 344.5) + (381 + 377) * (344.5 - 344.5) + (377 + 377) * (344.5 - 416.4) + (377 + 333.6) * (416.4 - 416.4) + (333.6 + 333.6) * (416.4 - 458.6) + (333.6 + 164.9) * (458.6 - 458.6) + (164.9 + 164.9) * (458.6 - 443.8) + (164.9 + 160.9) * (443.8 - 443.8) + (160.9 + 160.9) * (443.8 - 219.3) + (160.9 + 164.9) * (219.3 - 219.3) + (164.9 + 158.9) * (219.3 - 213.3) + (158.9 + 158.9) * (213.3 - 125.7) + (158.9 + 377) * (125.7 - 125.7)) * 0.5 * 0.00694$
LOW CEILING (Non-living area)	37	$-((459.8 + 459.8) * (416.4 - 458.6) + (459.8 + 333.6) * (458.6 - 458.6) + (333.6 + 333.6) * (458.6 - 416.4) + (333.6 + 459.8) * (416.4 - 416.4)) * 0.5 * 0.00694$
OTHER ROOM (Non-living area)	255	$-((158.9 + 164.9) * (213.3 - 219.3) + (164.9 + 160.9) * (219.3 - 219.3) + (160.9 + 160.9) * (219.3 - 439.8) + (160.9 + 4.9) * (439.8 - 439.8) + (4.9 + 4.9) * (439.8 - 443.8) + (4.9 + -1.1) * (443.8 - 443.8) + (-1.1 + -1.1) * (443.8 - 213.3) + (-1.1 + 158.9) * (213.3 - 213.3)) * 0.5 * 0.00694$
OTHER ROOM (Non-living area)	22	$-((413.6 + 413.6) * (243.7 - 340.5) + (413.6 + 381) * (340.5 - 340.5) + (381 + 381) * (340.5 - 243.7) + (381 + 413.6) * (243.7 - 243.7)) * 0.5 * 0.00694$
OTHER ROOM (Non-living area)	26	$-((486.8 + 486.8) * (125.7 - 207.5) + (486.8 + 440.2) * (207.5 - 207.5) + (440.2 + 440.2) * (207.5 - 131.7) + (440.2 + 444.2) * (131.7 - 131.7) + (444.2 + 444.2) * (131.7 - 125.7) + (444.2 + 486.8) * (125.7 - 125.7)) * 0.5 * 0.00694$
FULL BATH (Non-living area)	49	$-((444.2 + 444.2) * (125.7 - 131.7) + (444.2 + 440.2) * (131.7 - 131.7) + (440.2 + 440.2) * (131.7 - 243.7) + (440.2 + 381) * (243.7 - 243.7) + (381 + 381) * (243.7 - 131.7) + (381 + 377) * (131.7 - 131.7) + (377 + 377) * (131.7 - 125.7) + (377 + 444.2) * (125.7 - 125.7)) * 0.5 * 0.00694$

157 Inwood Trail, Skyline Acres, Madison, Madison County, Alabama, United States, 35758

Gross Living Area: 3460 sq. ft



Space	Area (sq. ft)	Calculation <small>Coordinate Polygon Area Algorithm using inches</small>
FLOOR 2 (Living area)	2755	$-((504.3 + 556.2) * (42 - 93.9) + (556.2 + 556.2) * (93.9 - 122.6) + (556.2 + 721.4) * (122.6 - 122.6) + (721.4 + 721.4) * (122.6 - 718.1) + (721.4 + 457.8) * (718.1 - 718.1) + (457.8 + 457.8) * (718.1 - 633.1) + (457.8 + 192.5) * (633.1 - 633.1) + (192.5 + 192.5) * (633.1 - 661.6) + (192.5 + -3.9) * (661.6 - 661.6) + (-3.9 + -3.9) * (661.6 - 547.8) + (-3.9 + -24.6) * (547.8 - 527.2) + (-24.6 + -24.6) * (527.2 - 461.7) + (-24.6 + -3.9) * (461.7 - 441.1) + (-3.9 + -3.9) * (441.1 - 213.3) + (-3.9 + 158.9) * (213.3 - 213.3) + (158.9 + 158.9) * (213.3 - 122.6) + (158.9 + 381.2) * (122.6 - 122.6) + (381.2 + 381.2) * (122.6 - 93.9) + (381.2 + 432.5) * (93.9 - 42) + (432.5 + 504.3) * (42 - 42)) * 0.5 * 0.00694$
BALCONY	92	$-((158.9 + 158.9) * (128.6 - 213.3) + (158.9 + 2.1) * (213.3 - 213.3) + (2.1 + 2.1) * (213.3 - 128.6)) * 0.5 * 0.00694$

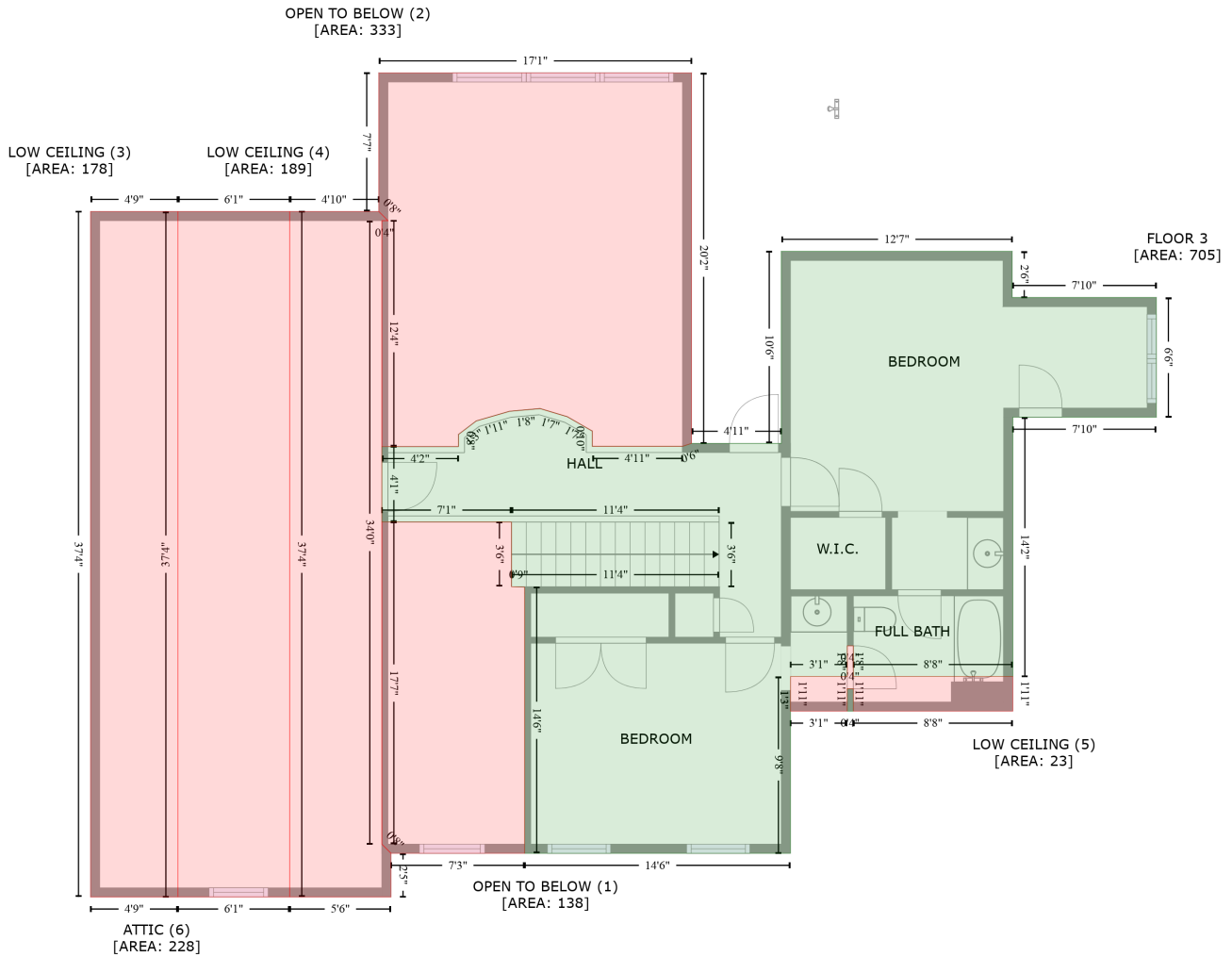
157 Inwood Trail, Skyline Acres, Madison, Madison County, Alabama, United States, 35758

Gross Living Area: 3460 sq. ft

Space	Area (sq. ft)	Calculation <small>Coordinate Polygon Area Algorithm using inches</small>
(Non-living area)		$+ (2.1 + 158.9) * (128.6 - 128.6) * 0.5 * 0.00694$

157 Inwood Trail, Skyline Acres, Madison, Madison County, Alabama, United States, 35758

Gross Living Area: 3460 sq. ft



Space	Area (sq. ft)	Calculation
FLOOR 3 (Living area)	705	Coordinate Polygon Area Algorithm using inches $-((598.8 + 598.8) * (239.4 - 269.6) + (598.8 + 693) * (269.6 - 269.6) + (693 + 693) * (269.6 - 347.8) + (693 + 599.2) * (347.8 - 347.8) + (599.2 + 599.2) * (347.8 - 517.4) + (599.2 + 494.9) * (517.4 - 517.4) + (494.9 + 494.9) * (517.4 - 497.3) + (494.9 + 490.9) * (497.3 - 497.3) + (490.9 + 490.9) * (497.3 - 517.4) + (490.9 + 453.8) * (517.4 - 517.4) + (453.8 + 453.8) * (517.4 - 633.1) + (453.8 + 279.9) * (633.1 - 633.1) + (279.9 + 279.9) * (633.1 - 459.1) + (279.9 + 271.3) * (459.1 - 458.6) + (271.3 + 271.3) * (458.6 - 416.4) + (271.3 + 186.5) * (416.4 - 416.4) + (186.5 + 186.5) * (416.4 - 367.1) + (186.5 + 236.6) * (367.1 - 367.1) + (236.6 + 236.6) * (367.1 - 359.2) + (236.6 + 248.3) * (359.2 - 350.3) + (248.3 + 270.1) * (350.3 - 344) + (270.1 + 290) * (344 - 342.2) + (290 + 307.8) * (342.2 - 347.5) + (307.8 + 324.2) * (347.5 - 357) + (324.2 + 324.2) * (357 - 366.9) + (324.2 + 383.1) * (366.9 - 366.9) + (383.1 + 389.1) * (366.9 - 364.9) + (389.1 + 447.8) * (364.9 - 364.9) + (447.8 + 447.8) * (364.9 - 239.4) + (447.8 + 598.8) * (239.4 - 239.4) * 0.5 * 0.00694 + ((494.9 + 494.9) * (525.4 - 540.1) + (494.9 + 490.9) * (540.1 - 540.1) + (490.9 + 490.9) * (540.1 - 525.4) + (490.9 + 494.9) * (525.4 - 525.4)) * 0.5 * 0.00694$
OPEN TO BELOW	138	$-((271.3 + 271.3) * (416.4 - 458.6) + (271.3 + 279.9) * (458.6 - 459.1) + (279.9 + 279.9) * (459.1 -$

157 Inwood Trail, Skyline Acres, Madison, Madison County, Alabama, United States, 35758

Gross Living Area: 3460 sq. ft

Space	Area (sq. ft)	Calculation <small>Coordinate Polygon Area Algorithm using inches</small>
(Non-living area)		$633.1 + (279.9 + 192.5) * (633.1 - 633.1) + (192.5 + 186.5) * (633.1 - 627.1) + (186.5 + 186.5) * (627.1 - 416.4) + (186.5 + 271.3) * (416.4 - 416.4) * 0.5 * 0.00694$
OPEN TO BELOW (Non-living area)	333	$-((389.1 + 389.1) * (122.6 - 364.9) + (389.1 + 383.1) * (364.9 - 366.9) + (383.1 + 324.2) * (366.9 - 366.9) + (324.2 + 324.2) * (366.9 - 357) + (324.2 + 307.8) * (357 - 347.5) + (307.8 + 290) * (347.5 - 342.2) + (290 + 270.1) * (342.2 - 344) + (270.1 + 248.3) * (344 - 350.3) + (248.3 + 236.6) * (350.3 - 359.2) + (236.6 + 236.6) * (359.2 - 367.1) + (236.6 + 186.5) * (367.1 - 367.1) + (186.5 + 186.5) * (367.1 - 219.3) + (186.5 + 190.5) * (219.3 - 219.3) + (190.5 + 184.5) * (219.3 - 213.3) + (184.5 + 184.5) * (213.3 - 122.6) + (184.5 + 389.1) * (122.6 - 122.6) * 0.5 * 0.00694$
LOW CEILING (Non-living area)	178	$-((53.2 + 53.2) * (213.3 - 661.6) + (53.2 + -3.9) * (661.6 - 661.6) + (-3.9 + -3.9) * (661.6 - 213.3) + (-3.9 + 53.2) * (213.3 - 213.3) * 0.5 * 0.00694$
LOW CEILING (Non-living area)	189	$-((184.5 + 190.5) * (213.3 - 219.3) + (190.5 + 186.5) * (219.3 - 219.3) + (186.5 + 186.5) * (219.3 - 627.1) + (186.5 + 192.5) * (627.1 - 633.1) + (192.5 + 192.5) * (633.1 - 661.6) + (192.5 + 126.3) * (661.6 - 661.6) + (126.3 + 126.3) * (661.6 - 213.3) + (126.3 + 184.5) * (213.3 - 213.3) * 0.5 * 0.00694$
LOW CEILING (Non-living area)	23	$-((494.9 + 494.9) * (497.3 - 517.4) + (494.9 + 599.2) * (517.4 - 517.4) + (599.2 + 599.2) * (517.4 - 540.1) + (599.2 + 494.9) * (540.1 - 540.1) + (494.9 + 494.9) * (540.1 - 525.4) + (494.9 + 490.9) * (525.4 - 525.4) + (490.9 + 490.9) * (525.4 - 540.1) + (490.9 + 453.8) * (540.1 - 540.1) + (453.8 + 453.8) * (540.1 - 517.4) + (453.8 + 490.9) * (517.4 - 517.4) + (490.9 + 490.9) * (517.4 - 497.3) + (490.9 + 494.9) * (497.3 - 497.3) * 0.5 * 0.00694$
ATTIC (Non-living area)	228	$-((126.3 + 126.3) * (213.3 - 661.6) + (126.3 + 53.2) * (661.6 - 661.6) + (53.2 + 53.2) * (661.6 - 213.3) + (53.2 + 126.3) * (213.3 - 213.3) * 0.5 * 0.00694$