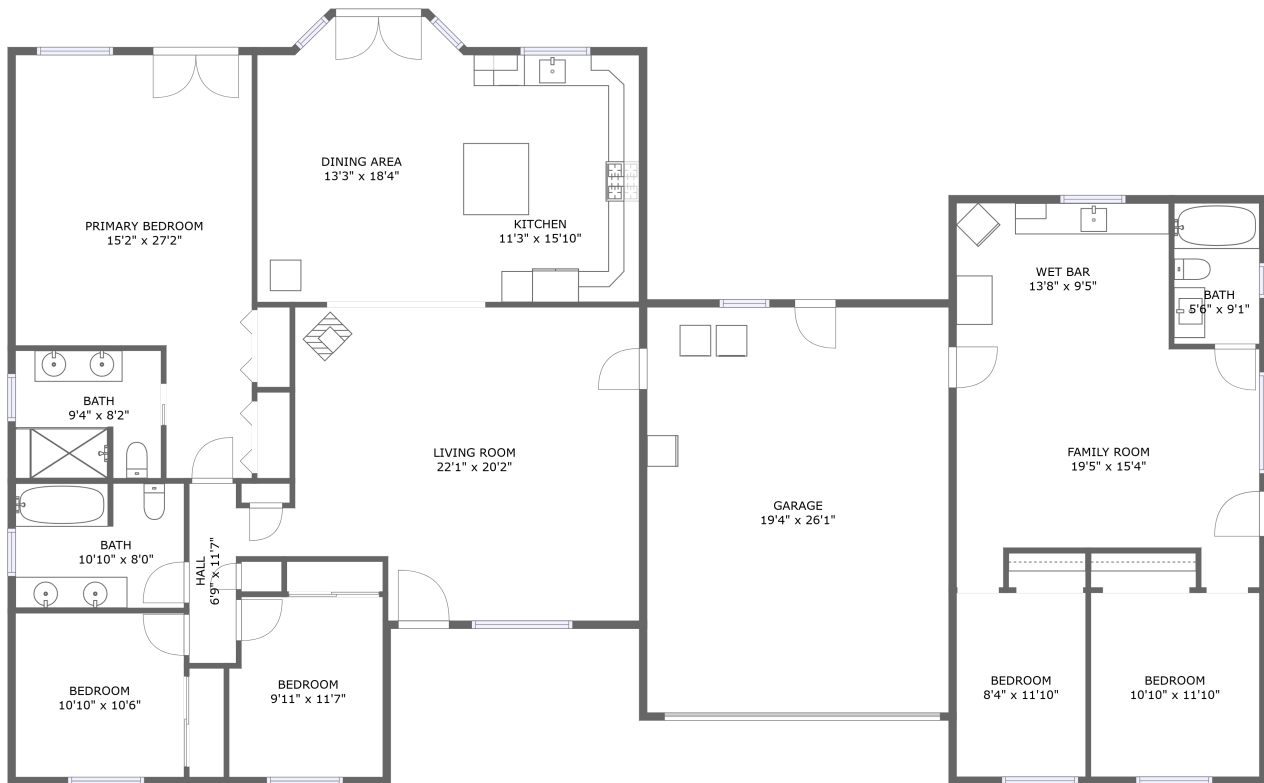



# 4455 Whispering Oak Way, Paso Robles, CA, US



FLOOR 1

## Property summary


 **1** Garages

 **5** Bedrooms

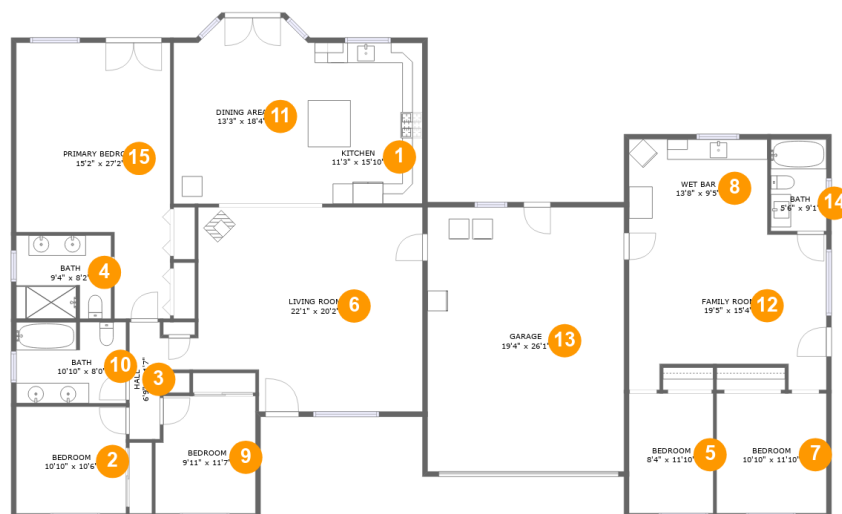
 **3** Bathrooms

 **0** Half baths

 **1** Floors

 **2,576**  
Gross living  
area sqft

 **3,103**  
Total sqft

**4455 Whispering Oak Way, Paso Robles, CA, US****Room dimensions**

Floor 1

Total sqft: 3103 Living area: 2576

#		Dimensions	sqft	Counted as living area
1	Kitchen	11'3" x 15'10"	179 sq. ft	Yes
2	Bedroom	10'10" x 10'6"	114 sq. ft	Yes
3	Hall	6'9" x 11'7"	47 sq. ft	Yes
4	Bath	9'4" x 8'2"	75 sq. ft	Yes
5	Bedroom	8'4" x 11'10"	98 sq. ft	Yes
6	Living Room	22'1" x 20'2"	421 sq. ft	Yes
7	Bedroom	10'10" x 11'10"	128 sq. ft	Yes
8	Wet Bar	13'8" x 9'5"	128 sq. ft	Yes
9	Bedroom	9'11" x 11'7"	111 sq. ft	Yes
10	Bath	10'10" x 8'0"	86 sq. ft	Yes
11	Dining Area	13'3" x 18'4"	231 sq. ft	Yes

Scan captured on Tue, 11 Feb 2025 00:08:50 GMT

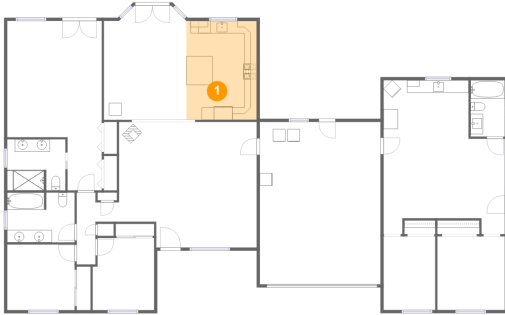
Information is calculated by Cubicasa technology deemed highly reliable but not guaranteed.

**4455 Whispering Oak Way,Paso Robles,CA,US**

#		Dimensions	sqft	Counted as living area
12	Family Room	19'5" x 15'4"	265 sq. ft	Yes
13	Garage	19'4" x 26'1"	504 sq. ft	No
14	Bath	5'6" x 9'1"	50 sq. ft	Yes
15	Primary Bedroom	15'2" x 27'2"	330 sq. ft	Yes

# 4455 Whispering Oak Way, Paso Robles, CA, US

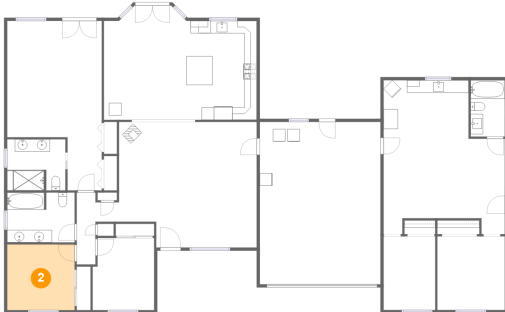
## 1 Floor 1 - Kitchen



**Dimensions:** 11'3" x 15'10"  
**Area:** 179 sq. ft  
**Counted as living area:** Yes

**Heated:** Yes  
**Finished:** Yes  
**Enclosed:** Yes  
**Contiguous:** Yes  
**Permitted:** Yes  
**Wet space:** No  
**Addition:** No  
**Conversion:** No

## 2 Floor 1 - Bedroom

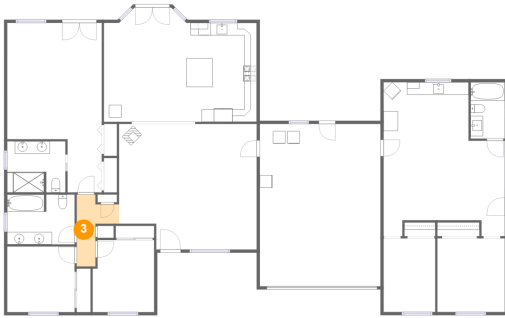


**Dimensions:** 10'10" x 10'6"  
**Area:** 114 sq. ft  
**Counted as living area:** Yes

**Heated:** Yes  
**Finished:** Yes  
**Enclosed:** Yes  
**Contiguous:** Yes  
**Permitted:** Yes  
**Wet space:** No  
**Addition:** No  
**Conversion:** No

# 4455 Whispering Oak Way, Paso Robles, CA, US

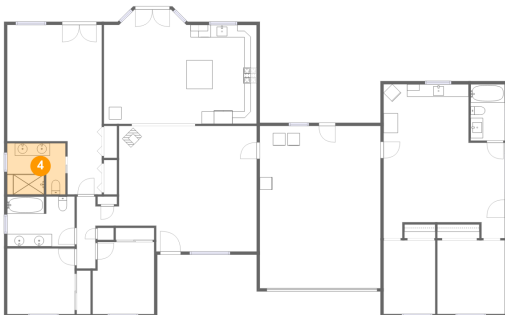
## 3 Floor 1 - Hall



Dimensions: 6'9" x 11'7"  
Area: 47 sq. ft  
Counted as living area: Yes

Heated: Yes  
Finished: Yes  
Enclosed: Yes  
Contiguous: Yes  
Permitted: Yes  
Wet space: No  
Addition: No  
Conversion: No

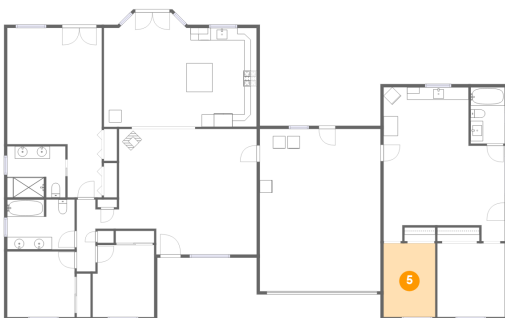
## 4 Floor 1 - Bath



Dimensions: 9'4" x 8'2"  
Area: 75 sq. ft  
Counted as living area: Yes

Heated: Yes  
Finished: Yes  
Enclosed: Yes  
Contiguous: Yes  
Permitted: Yes  
Wet space: Yes  
Addition: No  
Conversion: No

## 5 Floor 1 - Bedroom

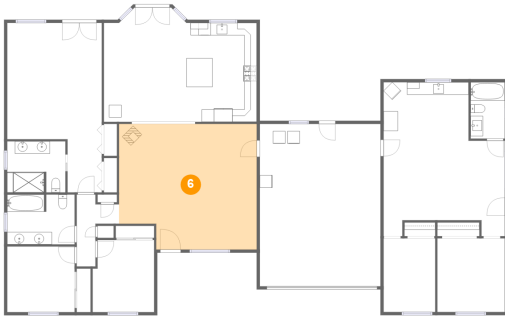


Dimensions: 8'4" x 11'10"  
Area: 98 sq. ft  
Counted as living area: Yes

Heated: Yes  
Finished: Yes  
Enclosed: Yes  
Contiguous: Yes  
Permitted: Yes  
Wet space: No  
Addition: No  
Conversion: No

# 4455 Whispering Oak Way, Paso Robles, CA, US

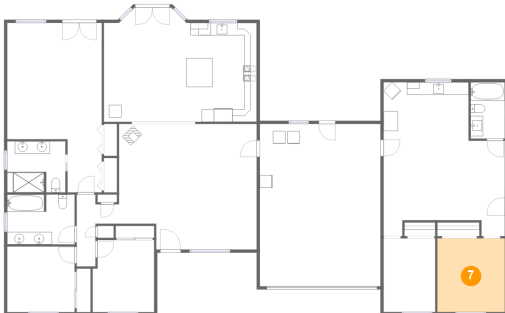
## 6 Floor 1 - Living Room



Dimensions: 22'1" x 20'2"  
Area: 421 sq. ft  
Counted as living area: Yes

Heated: Yes  
Finished: Yes  
Enclosed: Yes  
Contiguous: Yes  
Permitted: Yes  
Wet space: No  
Addition: No  
Conversion: No

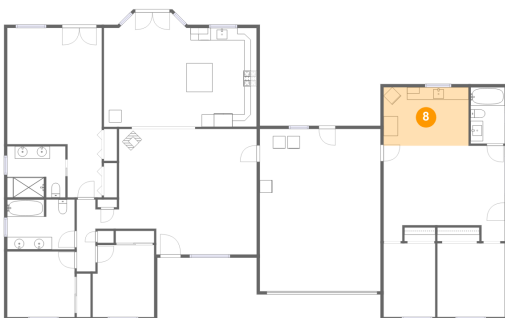
## 7 Floor 1 - Bedroom



Dimensions: 10'10" x 11'10"  
Area: 128 sq. ft  
Counted as living area: Yes

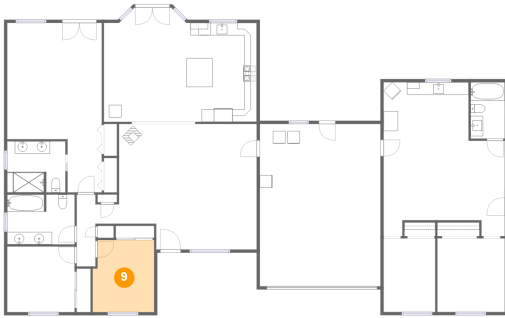
Heated: Yes  
Finished: Yes  
Enclosed: Yes  
Contiguous: Yes  
Permitted: Yes  
Wet space: No  
Addition: No  
Conversion: No

## 8 Floor 1 - Wet Bar



Dimensions: 13'8" x 9'5"  
Area: 128 sq. ft  
Counted as living area: Yes

Heated: Yes  
Finished: Yes  
Enclosed: Yes  
Contiguous: Yes  
Permitted: Yes  
Wet space: No  
Addition: No  
Conversion: No

**4455 Whispering Oak Way, Paso Robles, CA, US****9 Floor 1 - Bedroom**

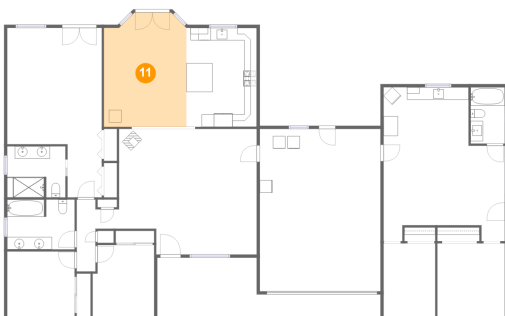
**Dimensions:** 9'11" x 11'7"  
**Area:** 111 sq. ft  
**Counted as living area:** Yes

**Heated:** Yes  
**Finished:** Yes  
**Enclosed:** Yes  
**Contiguous:** Yes  
**Permitted:** Yes  
**Wet space:** No  
**Addition:** No  
**Conversion:** No

**10 Floor 1 - Bath**

**Dimensions:** 10'10" x 8'0"  
**Area:** 86 sq. ft  
**Counted as living area:** Yes

**Heated:** Yes  
**Finished:** Yes  
**Enclosed:** Yes  
**Contiguous:** Yes  
**Permitted:** Yes  
**Wet space:** Yes  
**Addition:** No  
**Conversion:** No

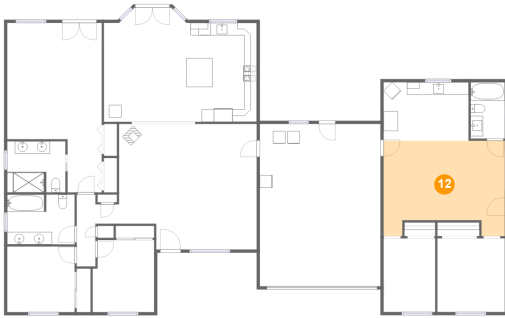
**11 Floor 1 - Dining Area**

**Dimensions:** 13'3" x 18'4"  
**Area:** 231 sq. ft  
**Counted as living area:** Yes

**Heated:** Yes  
**Finished:** Yes  
**Enclosed:** Yes  
**Contiguous:** Yes  
**Permitted:** Yes  
**Wet space:** No  
**Addition:** No  
**Conversion:** No

# 4455 Whispering Oak Way, Paso Robles, CA, US

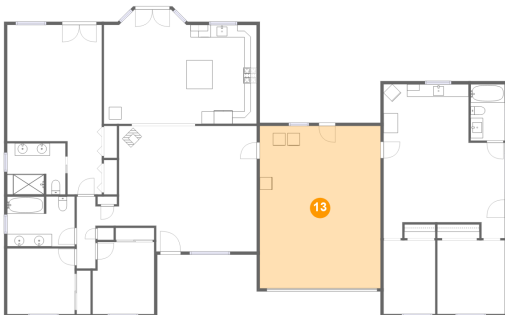
## 12 Floor 1 - Family Room



Dimensions: 19'5" x 15'4"  
Area: 265 sq. ft  
Counted as living area: Yes

Heated: Yes  
Finished: Yes  
Enclosed: Yes  
Contiguous: Yes  
Permitted: Yes  
Wet space: No  
Addition: No  
Conversion: No

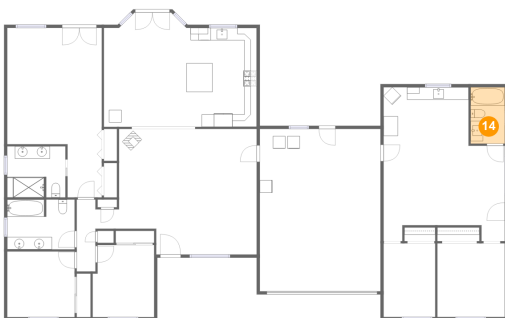
## 13 Floor 1 - Garage



Dimensions: 19'4" x 26'1"  
Area: 504 sq. ft  
Counted as living area: No

Heated: No  
Finished: No  
Enclosed: Yes  
Contiguous: Yes  
Permitted: Yes  
Wet space: No  
Addition: No  
Conversion: No

## 14 Floor 1 - Bath



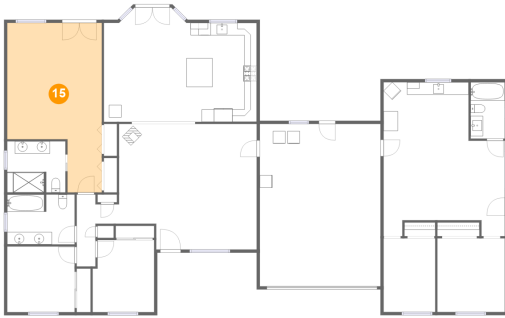
Dimensions: 5'6" x 9'1"  
Area: 50 sq. ft  
Counted as living area: Yes

Heated: Yes  
Finished: Yes  
Enclosed: Yes  
Contiguous: Yes  
Permitted: Yes  
Wet space: Yes  
Addition: No  
Conversion: No



# 4455 Whispering Oak Way, Paso Robles, CA, US

## 15 Floor 1 - Primary Bedroom



**Dimensions:** 15'2" x 27'2"  
**Area:** 330 sq. ft  
**Counted as living area:** Yes

**Heated:** Yes  
**Finished:** Yes  
**Enclosed:** Yes  
**Contiguous:** Yes  
**Permitted:** Yes  
**Wet space:** No  
**Addition:** No  
**Conversion:** No