

481 Winding Way Road, Timberlake, Lynchburg, Campbell County, Virginia, United States, 24502

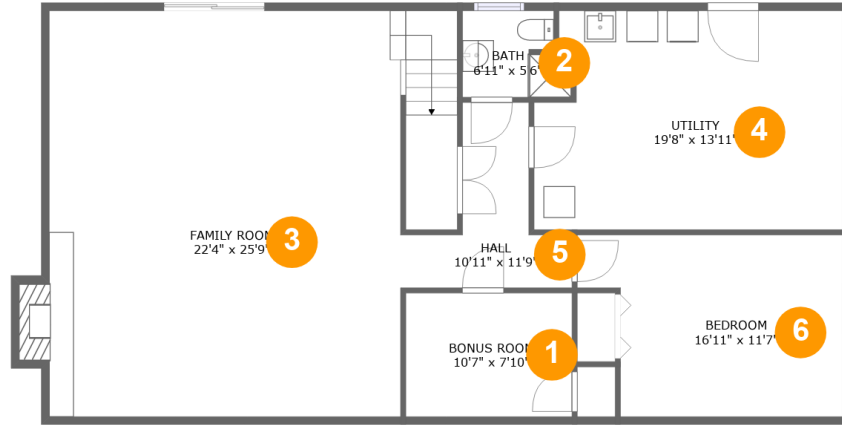


Property Summary

0 garages **4** bedrooms **3** bathrooms **0** half baths

2 floors **2,483** Gross Living Area sqft **3,636** total sqft

481 Winding Way Road, Timberlake, Lynchburg, Campbell County, Virginia, United States, 24502



Room Dimensions

Floor 1

Total sqft: 1389

Living area: 1105

#	Room name	Dimensions	Area (sqft)	Counted as Living Area
1	Bonus Room	10'7" x 7'10"	83 sq. ft	Yes
2	Bath	6'11" x 5'6"	34 sq. ft	Yes
3	Family Room	22'4" x 25'9"	633 sq. ft	Yes
4	Utility	19'8" x 13'11"	260 sq. ft	No
5	Hall	10'11" x 11'9"	72 sq. ft	Yes
6	Bedroom	16'11" x 11'7"	172 sq. ft	Yes

481 Winding Way Road, Timberlake, Lynchburg, Campbell County, Virginia, United States, 24502



Room Dimensions

Floor 2

Total sqft: 2247

Living area: 1378

#	Room name	Dimensions	Area (sqft)	Counted as Living Area
7	Kitchen	12'0" x 13'9"	166 sq. ft	Yes
8	Bath	6'4" x 10'2"	63 sq. ft	Yes
9	Deck	15'1" x 15'6"	211 sq. ft	No
10	Foyer	3'11" x 11'8"	46 sq. ft	Yes
11	Living Room	17'2" x 11'8"	209 sq. ft	Yes
12	Bath	5'7" x 7'8"	34 sq. ft	Yes
13	Hall	16'2" x 3'4"	53 sq. ft	Yes
14	Primary Bedroom	11'7" x 13'9"	160 sq. ft	Yes
15	Screened Porch	23'5" x 11'9"	276 sq. ft	No
16	Carport	13'9" x 25'9"	344 sq. ft	No
17	Bedroom	11'0" x 11'8"	129 sq. ft	Yes
18	Bedroom	15'1" x 11'8"		

Scan captured on Wed, 24 Jul 2024 23:28:11 GMT

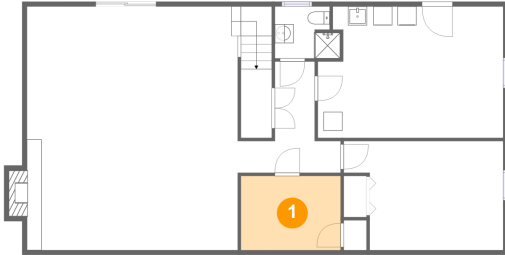
Information is calculated by CubiCasa technology; deemed highly reliable but not guaranteed.

**481 Winding Way Road, Timberlake, Lynchburg,
Campbell County, Virginia, United States, 24502**

#	Room name	Dimensions	Area (sqft)	Counted as Living Area
18	Bedroom	15'1" x 11'8"	155 sq. ft	Yes
19	Dining Area	10'0" x 13'9"	137 sq. ft	Yes

481 Winding Way Road, Timberlake, Lynchburg, Campbell County, Virginia, United States, 24502

1 Floor 1 - Bonus Room



Dimensions: 10'7" x 7'10"
Area: 83 sq. ft
Counted as Living Area:
Yes

Heated: Yes
Finished: Yes
Enclosed: Yes
Contiguous:
Yes
Permitted: Yes
Wet Space: No
Addition: No
Conversion: No

2 Floor 1 - Bath



Dimensions: 6'11" x 5'6"
Area: 34 sq. ft
Counted as Living Area:
Yes

Heated: Yes
Finished: Yes
Enclosed: Yes
Contiguous:
Yes
Permitted: Yes
Wet Space: Yes
Addition: No
Conversion: No

481 Winding Way Road, Timberlake, Lynchburg, Campbell County, Virginia, United States, 24502

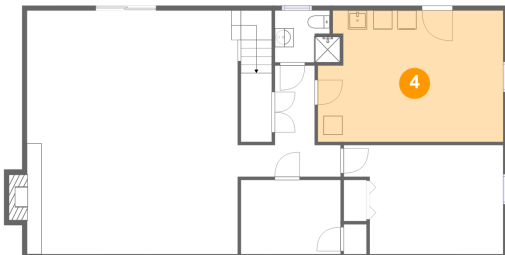
3 Floor 1 - Family Room



Dimensions: 22'4" x 25'9"
Area: 633 sq. ft
Counted as Living Area:
Yes

Heated: Yes
Finished: Yes
Enclosed: Yes
Contiguous:
Yes
Permitted: Yes
Wet Space: No
Addition: No
Conversion: No

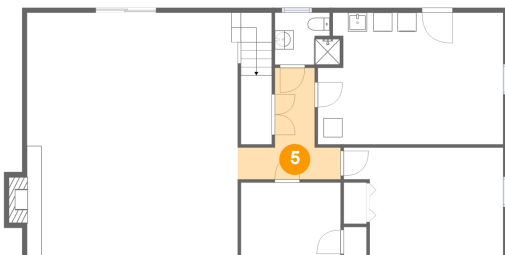
4 Floor 1 - Utility



Dimensions: 19'8" x 13'11"
Area: 260 sq. ft
Counted as Living Area: No

Heated: Yes
Finished: No
Enclosed: Yes
Contiguous: Yes
Permitted: Yes
Wet Space: No
Addition: No
Conversion: No

5 Floor 1 - Hall

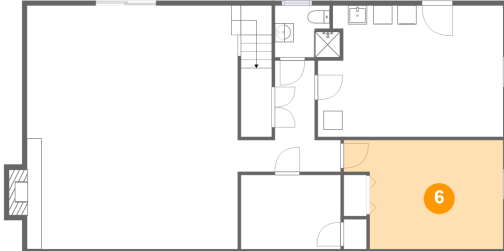


Dimensions: 10'11" x 11'9"
Area: 72 sq. ft
Counted as Living Area:
Yes

Heated: Yes
Finished: Yes
Enclosed: Yes
Contiguous:
Yes
Permitted: Yes
Wet Space: No
Addition: No
Conversion: No

481 Winding Way Road, Timberlake, Lynchburg, Campbell County, Virginia, United States, 24502

6 Floor 1 - Bedroom



Dimensions: 16'11" x 11'7"
Area: 172 sq. ft
Counted as Living Area:
Yes

Heated: Yes
Finished: Yes
Enclosed: Yes
Contiguous:
Yes
Permitted: Yes
Wet Space: No
Addition: No
Conversion: No

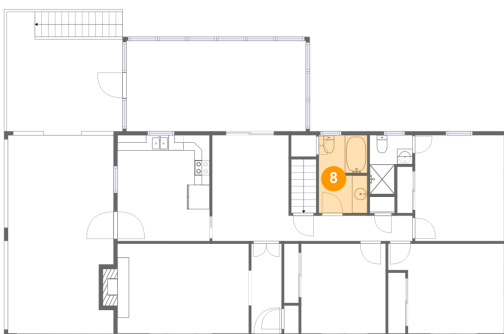
7 Floor 2 - Kitchen



Dimensions: 12'0" x 13'9"
Area: 166 sq. ft
Counted as Living Area:
Yes

Heated: Yes
Finished: Yes
Enclosed: Yes
Contiguous:
Yes
Permitted: Yes
Wet Space: No
Addition: No
Conversion: No

8 Floor 2 - Bath



Dimensions: 6'4" x 10'2"
Area: 63 sq. ft
Counted as Living Area:
Yes

Heated: Yes
Finished: Yes
Enclosed: Yes
Contiguous:
Yes
Permitted: Yes
Wet Space: Yes
Addition: No
Conversion: No

481 Winding Way Road, Timberlake, Lynchburg, Campbell County, Virginia, United States, 24502

9 Floor 2 - Deck



Dimensions: 15'1" x 15'6"
Area: 211 sq. ft
Counted as Living Area: No

Heated: No
Finished: Yes
Enclosed: No
Contiguous: Yes
Permitted: Yes
Wet Space: No
Addition: No
Conversion: No

10 Floor 2 - Foyer



Dimensions: 3'11" x 11'8"
Area: 46 sq. ft
Counted as Living Area:
Yes

Heated: Yes
Finished: Yes
Enclosed: Yes
Contiguous:
Yes
Permitted: Yes
Wet Space: No
Addition: No
Conversion: No

11 Floor 2 - Living Room

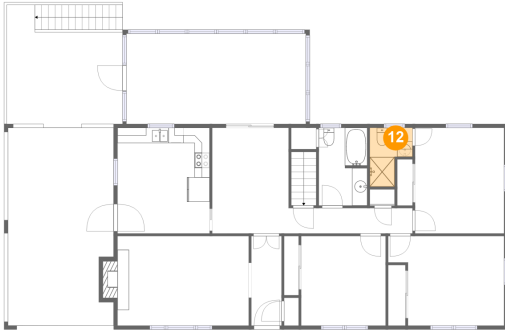


Dimensions: 17'2" x 11'8"
Area: 209 sq. ft
Counted as Living Area:
Yes

Heated: Yes
Finished: Yes
Enclosed: Yes
Contiguous:
Yes
Permitted: Yes
Wet Space: No
Addition: No
Conversion: No

481 Winding Way Road, Timberlake, Lynchburg, Campbell County, Virginia, United States, 24502

12 Floor 2 - Bath



Dimensions: 5'7" x 7'8"
Area: 34 sq. ft
Counted as Living Area:
Yes

Heated: Yes
Finished: Yes
Enclosed: Yes
Contiguous:
Yes
Permitted: Yes
Wet Space: Yes
Addition: No
Conversion: No

13 Floor 2 - Hall



Dimensions: 16'2" x 3'4"
Area: 53 sq. ft
Counted as Living Area:
Yes

Heated: Yes
Finished: Yes
Enclosed: Yes
Contiguous:
Yes
Permitted: Yes
Wet Space: No
Addition: No
Conversion: No

14 Floor 2 - Primary Bedroom



Dimensions: 11'7" x 13'9"
Area: 160 sq. ft
Counted as Living Area:
Yes

Heated: Yes
Finished: Yes
Enclosed: Yes
Contiguous:
Yes
Permitted: Yes
Wet Space: No
Addition: No
Conversion: No

481 Winding Way Road, Timberlake, Lynchburg, Campbell County, Virginia, United States, 24502

15 Floor 2 - Screened Porch



Dimensions: 23'5" x 11'9"
Area: 276 sq. ft
Counted as Living Area: No

Heated: No
Finished: Yes
Enclosed: No
Contiguous: Yes
Permitted: Yes
Wet Space: No
Addition: No
Conversion: No

16 Floor 2 - Carport



Dimensions: 13'9" x 25'9"
Area: 344 sq. ft
Counted as Living Area: No

Heated: No
Finished: Yes
Enclosed: No
Contiguous: Yes
Permitted: Yes
Wet Space: No
Addition: No
Conversion: No

17 Floor 2 - Bedroom



Dimensions: 11'0" x 11'8"
Area: 129 sq. ft
Counted as Living Area:
Yes

Heated: Yes
Finished: Yes
Enclosed: Yes
Contiguous:
Yes
Permitted: Yes
Wet Space: No
Addition: No
Conversion: No

481 Winding Way Road, Timberlake, Lynchburg, Campbell County, Virginia, United States, 24502

18 Floor 2 - Bedroom



Dimensions: 15'1" x 11'8"
Area: 155 sq. ft
Counted as Living Area:
Yes

Heated: Yes
Finished: Yes
Enclosed: Yes
Contiguous:
Yes
Permitted: Yes
Wet Space: No
Addition: No
Conversion: No

19 Floor 2 - Dining Area



Dimensions: 10'0" x 13'9"
Area: 137 sq. ft
Counted as Living Area:
Yes

Heated: Yes
Finished: Yes
Enclosed: Yes
Contiguous:
Yes
Permitted: Yes
Wet Space: No
Addition: No
Conversion: No