

# 442 New Britain Drive, Lynchburg, Lynchburg, Virginia, United States, 24503

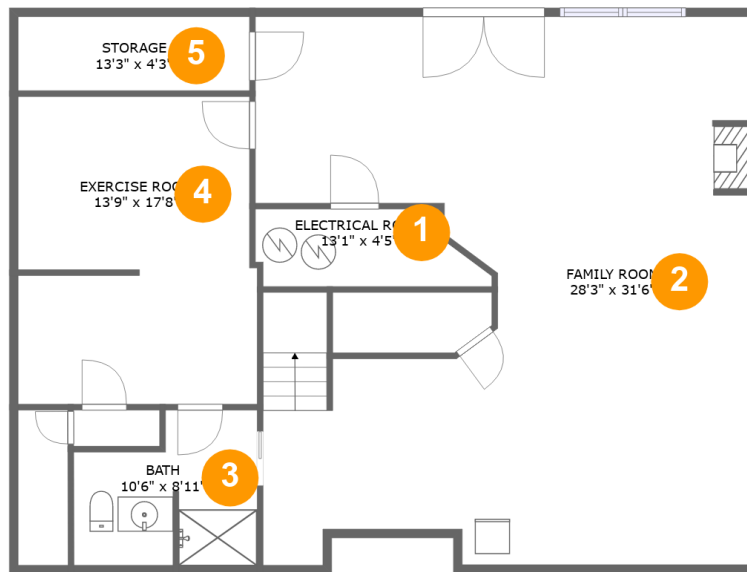


## Property Summary

**1** garages      **4** bedrooms      **4** bathrooms      **1** half baths

**4** floors      **4,891** Gross Living Area sqft      **6,504** total sqft

**442 New Britain Drive, Lynchburg, Lynchburg, Virginia, United States, 24503**



**Room Dimensions**

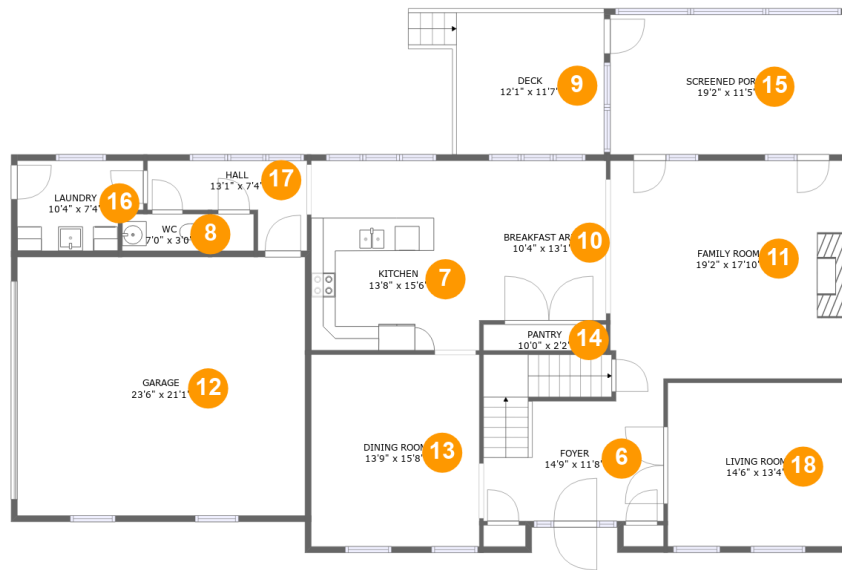
Floor 1

Total sqft: 1380

Living area: 1188

#	Room name	Dimensions	Area (sqft)	Counted as Living Area
1	Electrical Room	13'1" x 4'5"	52 sq. ft	No
2	Family Room	28'3" x 31'6"	768 sq. ft	Yes
3	Bath	10'6" x 8'11"	80 sq. ft	Yes
4	Exercise Room	13'9" x 17'8"	236 sq. ft	Yes
5	Storage	13'3" x 4'3"	57 sq. ft	No

# 442 New Britain Drive, Lynchburg, Lynchburg, Virginia, United States, 24503



## Room Dimensions

Floor 2

Total sqft: 2535

Living area: 1636

#	Room name	Dimensions	Area (sqft)	Counted as Living Area
6	Foyer	14'9" x 11'8"	189 sq. ft	Yes
7	Kitchen	13'8" x 15'6"	213 sq. ft	Yes
8	Wc	7'0" x 3'0"	21 sq. ft	Yes
9	Deck	12'1" x 11'7"	140 sq. ft	No
10	Breakfast Area	10'4" x 13'1"	135 sq. ft	Yes
11	Family Room	19'2" x 17'10"	340 sq. ft	Yes
12	Garage	23'6" x 21'1"	497 sq. ft	No
13	Dining Room	13'9" x 15'8"	215 sq. ft	Yes
14	Pantry	10'0" x 2'2"	21 sq. ft	Yes
15	Screened Porch	19'2" x 11'5"	219 sq. ft	No
16	Laundry	10'4" x 7'4"	69 sq. ft	Yes

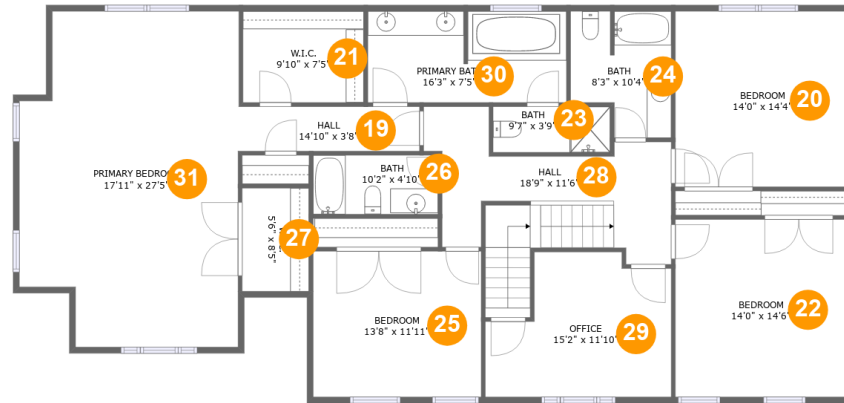
Scan captured on Tue, 15 Oct 2024 13:51:57 GMT

Information is calculated by CubiCasa technology; deemed highly reliable but not guaranteed.

**442 New Britain Drive, Lynchburg, Lynchburg,  
Virginia, United States, 24503**

#	Room name	Dimensions	Area (sqft)	Counted as Living Area
17	Hall	13'1" x 7'4"	66 sq. ft	Yes
18	Living Room	14'6" x 13'4"	193 sq. ft	Yes

# 442 New Britain Drive, Lynchburg, Lynchburg, Virginia, United States, 24503



## Room Dimensions

Floor 3

Total sqft: 2067

Living area: 2067

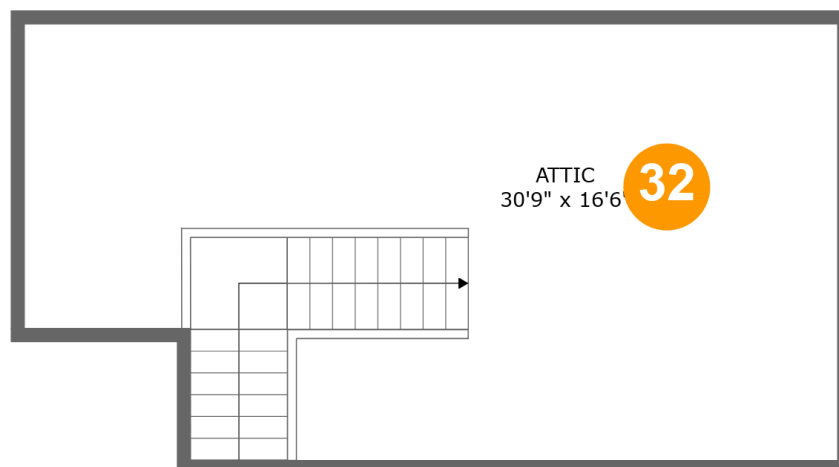
#	Room name	Dimensions	Area (sqft)	Counted as Living Area
19	Hall	14'10" x 3'8"	54 sq. ft	Yes
20	Bedroom	14'0" x 14'4"	201 sq. ft	Yes
21	W.i.c.	9'10" x 7'5"	74 sq. ft	Yes
22	Bedroom	14'0" x 14'6"	203 sq. ft	Yes
23	Bath	9'7" x 3'9"	36 sq. ft	Yes
24	Bath	8'3" x 10'4"	73 sq. ft	Yes
25	Bedroom	13'8" x 11'11"	163 sq. ft	Yes
26	Bath	10'2" x 4'10"	49 sq. ft	Yes
27	W.i.c.	5'6" x 8'5"	46 sq. ft	Yes
28	Hall	18'9" x 11'6"	190 sq. ft	Yes
29	Office	15'2" x 11'10"	152 sq. ft	Yes

Scan captured on Tue, 15 Oct 2024 13:51:57 GMT

Information is calculated by CubiCasa technology; deemed highly reliable but not guaranteed.

**442 New Britain Drive, Lynchburg, Lynchburg,  
Virginia, United States, 24503**

#	Room name	Dimensions	Area (sqft)	Counted as Living Area
30	Primary Bath	16'3" x 7'5"	120 sq. ft	Yes
31	Primary Bedroom	17'11" x 27'5"	449 sq. ft	Yes

**442 New Britain Drive, Lynchburg, Lynchburg,  
Virginia, United States, 24503****Room Dimensions**

Floor 4

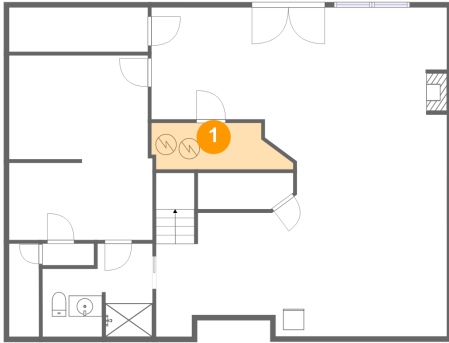
Total sqft: 522

Living area: 0

#	Room name	Dimensions	Area (sqft)	Counted as Living Area
32	Attic	30'9" x 16'6"	336 sq. ft	No

# 442 New Britain Drive, Lynchburg, Lynchburg, Virginia, United States, 24503

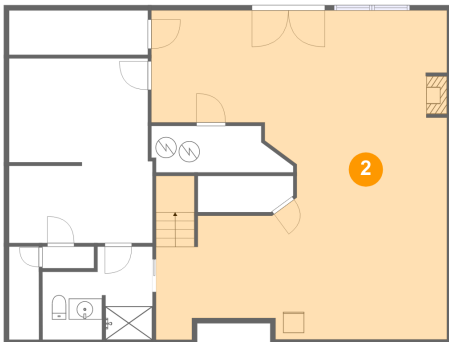
## 1 Floor 1 - Electrical Room



Dimensions: 13'1" x 4'5"  
Area: 52 sq. ft  
Counted as Living Area: No

Heated: No  
Finished: No  
Enclosed: Yes  
Contiguous: Yes  
Permitted: Yes  
Wet Space: No  
Addition: No  
Conversion: No

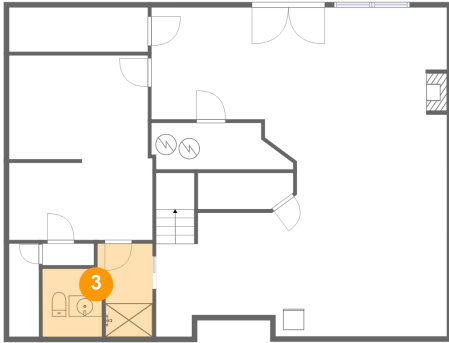
## 2 Floor 1 - Family Room



Dimensions: 28'3" x 31'6"  
Area: 768 sq. ft  
Counted as Living Area:  
Yes

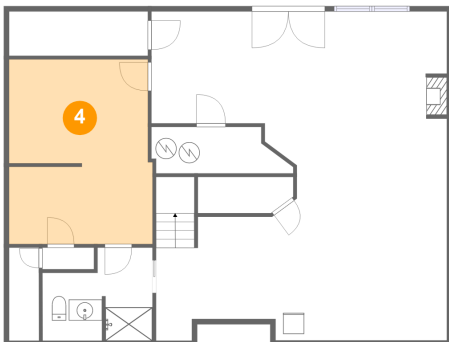
Heated: Yes  
Finished: Yes  
Enclosed: Yes  
Contiguous:  
Yes  
Permitted: Yes  
Wet Space: No  
Addition: No  
Conversion: No



**442 New Britain Drive, Lynchburg, Lynchburg,  
Virginia, United States, 24503****3 Floor 1 - Bath**

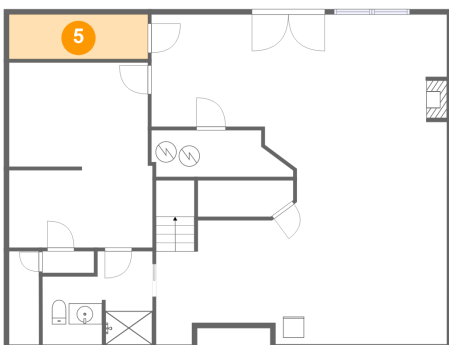
Dimensions: 10'6" x 8'11"  
Area: 80 sq. ft  
Counted as Living Area:  
Yes

Heated: Yes  
Finished: Yes  
Enclosed: Yes  
Contiguous:  
Yes  
Permitted: Yes  
Wet Space: Yes  
Addition: No  
Conversion: No

**4 Floor 1 - Exercise Room**

Dimensions: 13'9" x 17'8"  
Area: 236 sq. ft  
Counted as Living Area:  
Yes

Heated: Yes  
Finished: Yes  
Enclosed: Yes  
Contiguous:  
Yes  
Permitted: Yes  
Wet Space: No  
Addition: No  
Conversion: No

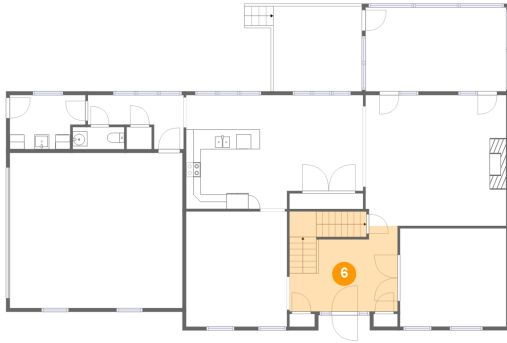
**5 Floor 1 - Storage**

Dimensions: 13'3" x 4'3"  
Area: 57 sq. ft  
Counted as Living Area: No

Heated: No  
Finished: No  
Enclosed: No  
Contiguous: Yes  
Permitted: Yes  
Wet Space: No  
Addition: No  
Conversion: No

# 442 New Britain Drive, Lynchburg, Lynchburg, Virginia, United States, 24503

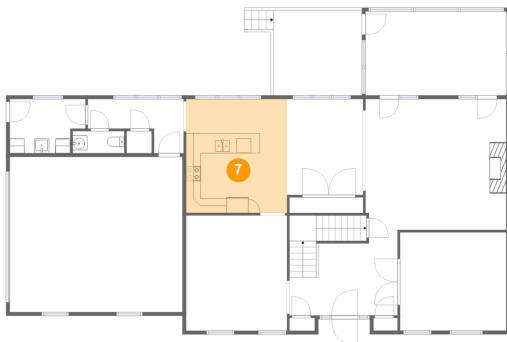
## 6 Floor 2 - Foyer



Dimensions: 14'9" x 11'8"  
Area: 189 sq. ft  
Counted as Living Area:  
Yes

Heated: Yes  
Finished: Yes  
Enclosed: Yes  
Contiguous:  
Yes  
Permitted: Yes  
Wet Space: No  
Addition: No  
Conversion: No

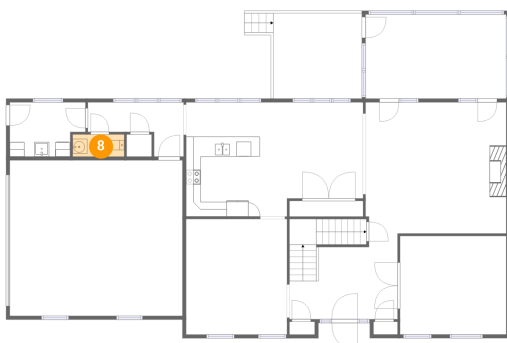
## 7 Floor 2 - Kitchen



Dimensions: 13'8" x 15'6"  
Area: 213 sq. ft  
Counted as Living Area:  
Yes

Heated: Yes  
Finished: Yes  
Enclosed: Yes  
Contiguous:  
Yes  
Permitted: Yes  
Wet Space: No  
Addition: No  
Conversion: No

## 8 Floor 2 - Wc

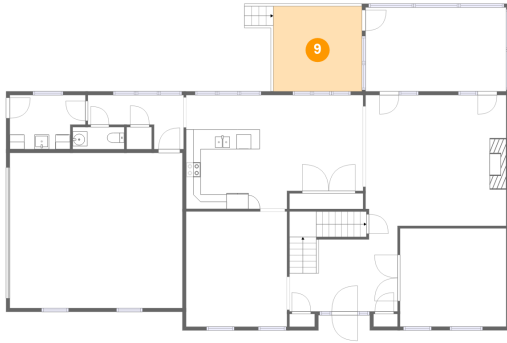


Dimensions: 7'0" x 3'0"  
Area: 21 sq. ft  
Counted as Living Area:  
Yes

Heated: Yes  
Finished: Yes  
Enclosed: Yes  
Contiguous:  
Yes  
Permitted: Yes  
Wet Space: Yes  
Addition: No  
Conversion: No

# 442 New Britain Drive, Lynchburg, Lynchburg, Virginia, United States, 24503

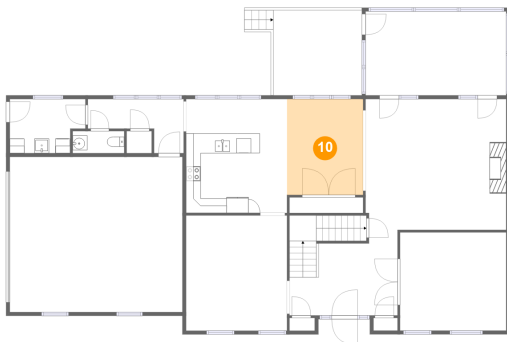
## 9 Floor 2 - Deck



Dimensions: 12'1" x 11'7"  
Area: 140 sq. ft  
Counted as Living Area: No

Heated: No  
Finished: Yes  
Enclosed: No  
Contiguous: Yes  
Permitted: Yes  
Wet Space: No  
Addition: No  
Conversion: No

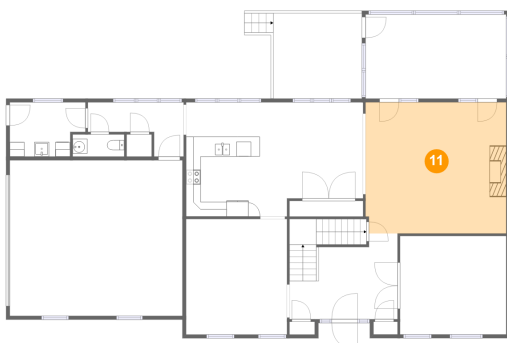
## 10 Floor 2 - Breakfast Area



Dimensions: 10'4" x 13'1"  
Area: 135 sq. ft  
Counted as Living Area:  
Yes

Heated: Yes  
Finished: Yes  
Enclosed: Yes  
Contiguous:  
Yes  
Permitted: Yes  
Wet Space: No  
Addition: No  
Conversion: No

## 11 Floor 2 - Family Room

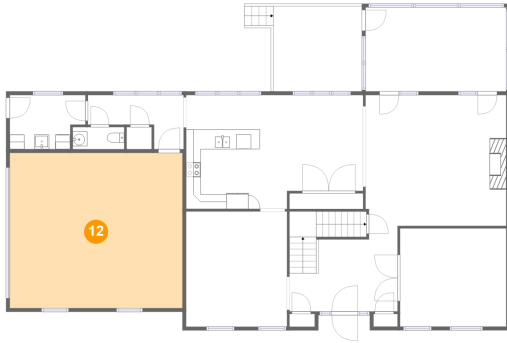


Dimensions: 19'2" x 17'10"  
Area: 340 sq. ft  
Counted as Living Area:  
Yes

Heated: Yes  
Finished: Yes  
Enclosed: Yes  
Contiguous:  
Yes  
Permitted: Yes  
Wet Space: No  
Addition: No  
Conversion: No

# 442 New Britain Drive, Lynchburg, Lynchburg, Virginia, United States, 24503

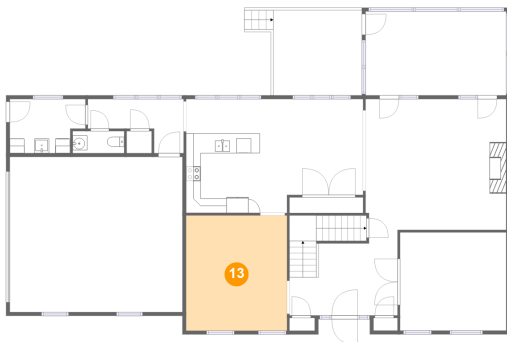
## 12 Floor 2 - Garage



Dimensions: 23'6" x 21'1"  
Area: 497 sq. ft  
Counted as Living Area: No

Heated: No  
Finished: No  
Enclosed: Yes  
Contiguous: Yes  
Permitted: Yes  
Wet Space: No  
Addition: No  
Conversion: No

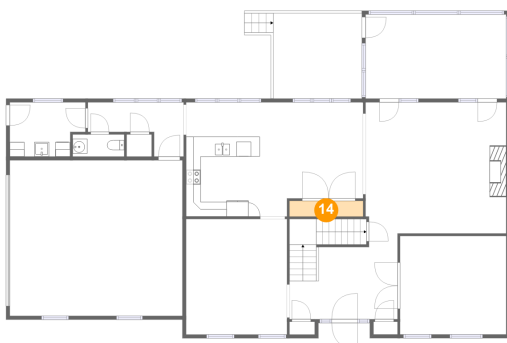
## 13 Floor 2 - Dining Room



Dimensions: 13'9" x 15'8"  
Area: 215 sq. ft  
Counted as Living Area:  
Yes

Heated: Yes  
Finished: Yes  
Enclosed: Yes  
Contiguous:  
Yes  
Permitted: Yes  
Wet Space: No  
Addition: No  
Conversion: No

## 14 Floor 2 - Pantry

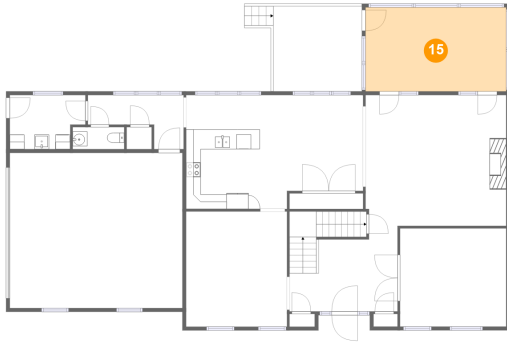


Dimensions: 10'0" x 2'2"  
Area: 21 sq. ft  
Counted as Living Area:  
Yes

Heated: Yes  
Finished: Yes  
Enclosed: Yes  
Contiguous:  
Yes  
Permitted: Yes  
Wet Space: No  
Addition: No  
Conversion: No

# 442 New Britain Drive, Lynchburg, Lynchburg, Virginia, United States, 24503

## 15 Floor 2 - Screened Porch



Dimensions: 19'2" x 11'5"  
Area: 219 sq. ft  
Counted as Living Area: No

Heated: No  
Finished: Yes  
Enclosed: No  
Contiguous: Yes  
Permitted: Yes  
Wet Space: No  
Addition: No  
Conversion: No

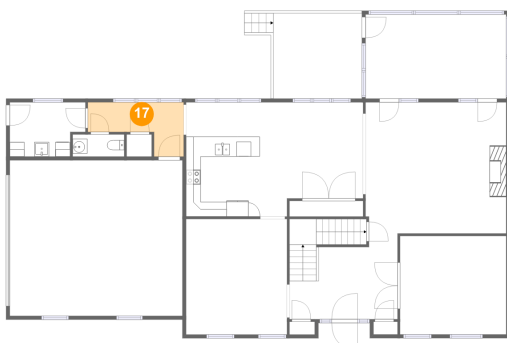
## 16 Floor 2 - Laundry



Dimensions: 10'4" x 7'4"  
Area: 69 sq. ft  
Counted as Living Area:  
Yes

Heated: Yes  
Finished: Yes  
Enclosed: Yes  
Contiguous:  
Yes  
Permitted: Yes  
Wet Space: No  
Addition: No  
Conversion: No

## 17 Floor 2 - Hall

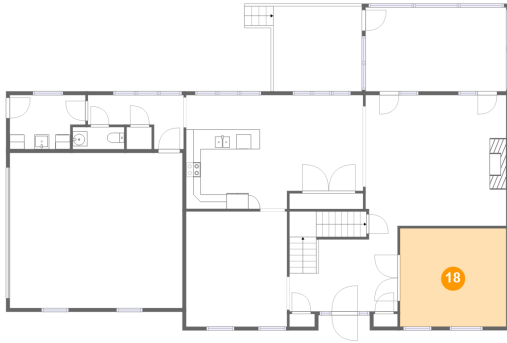


Dimensions: 13'1" x 7'4"  
Area: 66 sq. ft  
Counted as Living Area:  
Yes

Heated: Yes  
Finished: Yes  
Enclosed: Yes  
Contiguous:  
Yes  
Permitted: Yes  
Wet Space: No  
Addition: No  
Conversion: No

# 442 New Britain Drive, Lynchburg, Lynchburg, Virginia, United States, 24503

## 18 Floor 2 - Living Room



Dimensions: 14'6" x 13'4"  
Area: 193 sq. ft  
Counted as Living Area:  
Yes

Heated: Yes  
Finished: Yes  
Enclosed: Yes  
Contiguous:  
Yes  
Permitted: Yes  
Wet Space: No  
Addition: No  
Conversion: No

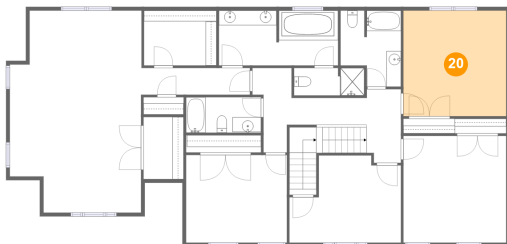
## 19 Floor 3 - Hall



Dimensions: 14'10" x 3'8"  
Area: 54 sq. ft  
Counted as Living Area:  
Yes

Heated: Yes  
Finished: Yes  
Enclosed: Yes  
Contiguous:  
Yes  
Permitted: Yes  
Wet Space: No  
Addition: No  
Conversion: No

## 20 Floor 3 - Bedroom



Dimensions: 14'0" x 14'4"  
Area: 201 sq. ft  
Counted as Living Area:  
Yes

Heated: Yes  
Finished: Yes  
Enclosed: Yes  
Contiguous:  
Yes  
Permitted: Yes  
Wet Space: No  
Addition: No  
Conversion: No

# 442 New Britain Drive, Lynchburg, Lynchburg, Virginia, United States, 24503

## 21 Floor 3 - W.i.c.



Dimensions: 9'10" x 7'5"  
Area: 74 sq. ft  
Counted as Living Area:  
Yes

Heated: Yes  
Finished: Yes  
Enclosed: Yes  
Contiguous:  
Yes  
Permitted: Yes  
Wet Space: No  
Addition: No  
Conversion: No

## 22 Floor 3 - Bedroom



Dimensions: 14'0" x 14'6"  
Area: 203 sq. ft  
Counted as Living Area:  
Yes

Heated: Yes  
Finished: Yes  
Enclosed: Yes  
Contiguous:  
Yes  
Permitted: Yes  
Wet Space: No  
Addition: No  
Conversion: No

## 23 Floor 3 - Bath

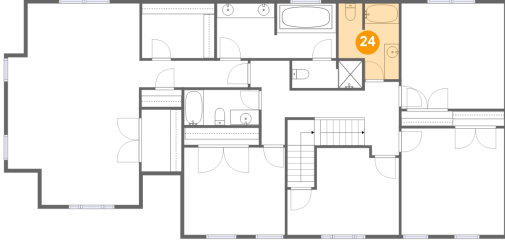


Dimensions: 9'7" x 3'9"  
Area: 36 sq. ft  
Counted as Living Area:  
Yes

Heated: Yes  
Finished: Yes  
Enclosed: Yes  
Contiguous:  
Yes  
Permitted: Yes  
Wet Space: Yes  
Addition: No  
Conversion: No

# 442 New Britain Drive, Lynchburg, Lynchburg, Virginia, United States, 24503

## 24 Floor 3 - Bath



Dimensions: 8'3" x 10'4"  
Area: 73 sq. ft  
Counted as Living Area:  
Yes

Heated: Yes  
Finished: Yes  
Enclosed: Yes  
Contiguous:  
Yes  
Permitted: Yes  
Wet Space: Yes  
Addition: No  
Conversion: No

## 25 Floor 3 - Bedroom



Dimensions: 13'8" x 11'11"  
Area: 163 sq. ft  
Counted as Living Area:  
Yes

Heated: Yes  
Finished: Yes  
Enclosed: Yes  
Contiguous:  
Yes  
Permitted: Yes  
Wet Space: No  
Addition: No  
Conversion: No

## 26 Floor 3 - Bath



Dimensions: 10'2" x 4'10"  
Area: 49 sq. ft  
Counted as Living Area:  
Yes

Heated: Yes  
Finished: Yes  
Enclosed: Yes  
Contiguous:  
Yes  
Permitted: Yes  
Wet Space: Yes  
Addition: No  
Conversion: No



# 442 New Britain Drive, Lynchburg, Lynchburg, Virginia, United States, 24503

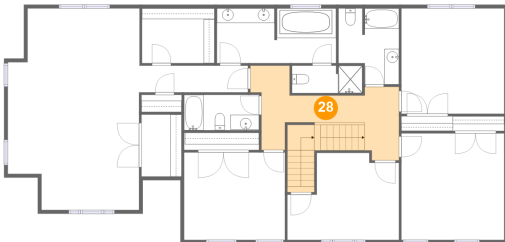
## 27 Floor 3 - W.i.c.



Dimensions: 5'6" x 8'5"  
Area: 46 sq. ft  
Counted as Living Area:  
Yes

Heated: Yes  
Finished: Yes  
Enclosed: Yes  
Contiguous:  
Yes  
Permitted: Yes  
Wet Space: No  
Addition: No  
Conversion: No

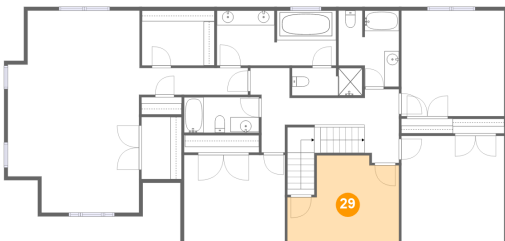
## 28 Floor 3 - Hall



Dimensions: 18'9" x 11'6"  
Area: 190 sq. ft  
Counted as Living Area:  
Yes

Heated: Yes  
Finished: Yes  
Enclosed: Yes  
Contiguous:  
Yes  
Permitted: Yes  
Wet Space: No  
Addition: No  
Conversion: No

## 29 Floor 3 - Office

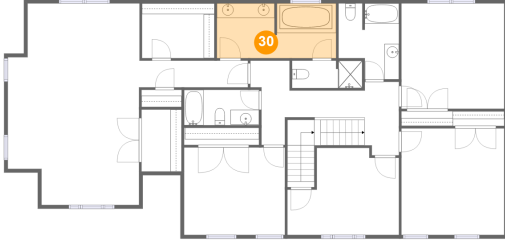


Dimensions: 15'2" x 11'10"  
Area: 152 sq. ft  
Counted as Living Area:  
Yes

Heated: Yes  
Finished: Yes  
Enclosed: Yes  
Contiguous:  
Yes  
Permitted: Yes  
Wet Space: No  
Addition: No  
Conversion: No

# 442 New Britain Drive, Lynchburg, Lynchburg, Virginia, United States, 24503

## 30 Floor 3 - Primary Bath



Dimensions: 16'3" x 7'5"  
Area: 120 sq. ft  
Counted as Living Area:  
Yes

Heated: Yes  
Finished: Yes  
Enclosed: Yes  
Contiguous:  
Yes  
Permitted: Yes  
Wet Space: Yes  
Addition: No  
Conversion: No

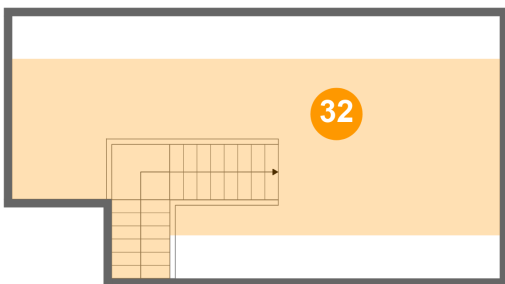
## 31 Floor 3 - Primary Bedroom



Dimensions: 17'11" x 27'5"  
Area: 449 sq. ft  
Counted as Living Area:  
Yes

Heated: Yes  
Finished: Yes  
Enclosed: Yes  
Contiguous:  
Yes  
Permitted: Yes  
Wet Space: No  
Addition: No  
Conversion: No

## 32 Floor 4 - Attic



Dimensions: 30'9" x 16'6"  
Area: 336 sq. ft  
Counted as Living Area: No

Heated: No  
Finished: No  
Enclosed: Yes  
Contiguous: Yes  
Permitted: Yes  
Wet Space: No  
Addition: No  
Conversion: No