

Home report

3706 Derby Drive, Roanoke, Roanoke County, Virginia, United States, 24012



Total Area: 2197 sq. ft

Floor 1: 611 sq. ft, Floor 2: 1586 sq. ft

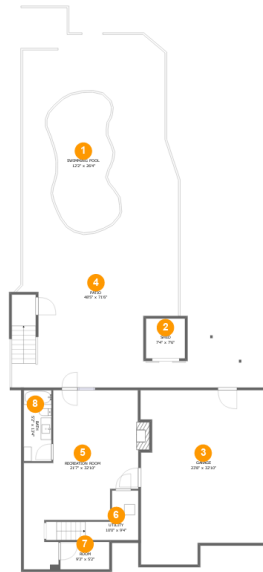
Excluded: Garage 710 sq. ft, Utility 89 sq. ft, Patio 1923 sq. ft, Shed 55 sq. ft, Fireplace 13 sq. ft, Porch 92 sq. ft, Deck 1155 sq. ft, Walls: 190 sq. ft

Property summary



Home report

3706 Derby Drive, Roanoke, Roanoke County, Virginia, United States, 24012



Room dimensions

Floor 1

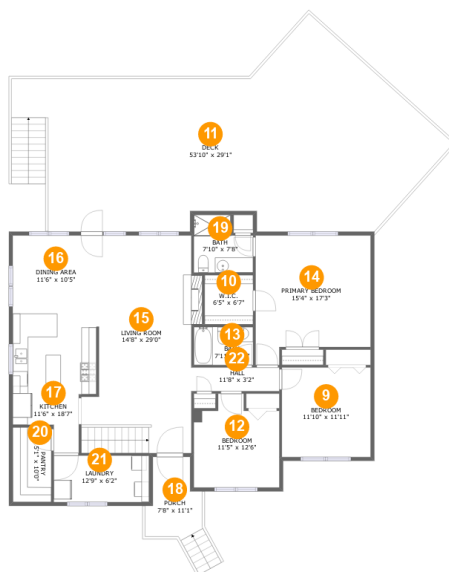
Total:611sqft

Excluded: 2790sqft

#		Max Dimensions	sqft	Included
1	Swimming Pool	12'2" x 26'4"	267 sq. ft	No
2	Shed	7'4" x 7'6"	55 sq. ft	No
3	Garage	23'8" x 32'10"	710 sq. ft	No
4	Patio	48'5" x 71'6"	2245 sq. ft	No
5	Recreation Room	21'7" x 32'10"	480 sq. ft	Yes
6	Utility	10'0" x 9'4"	89 sq. ft	No
7	Room	9'3" x 5'2"	48 sq. ft	Yes
8	Bath	5'2" x 13'4"	70 sq. ft	Yes

Home report

3706 Derby Drive, Roanoke, Roanoke County, Virginia, United States, 24012



Room dimensions

Floor 2

Total:1586sqft

Excluded: 1247sqft

#		Max Dimensions	sqft	Included
9	Bedroom	11'10" x 11'11"	141 sq. ft	Yes
10	W.I.C.	6'5" x 6'7"	43 sq. ft	Yes
11	Deck	53'10" x 29'1"	1155 sq. ft	No
12	Bedroom	11'5" x 12'6"	125 sq. ft	Yes
13	Bath	7'11" x 5'1"	40 sq. ft	Yes
14	Primary Bedroom	15'4" x 17'3"	236 sq. ft	Yes
15	Living Room	14'8" x 29'0"	385 sq. ft	Yes
16	Dining Area	11'6" x 10'5"	120 sq. ft	Yes
17	Kitchen	11'6" x 18'7"	169 sq. ft	Yes
18	Porch	7'8" x 11'1"	92 sq. ft	No
19	Bath	7'10" x 7'8"	53 sq. ft	Yes

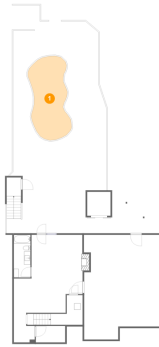
Home report

3706 Derby Drive, Roanoke, Roanoke County, Virginia, United States, 24012

#		Max Dimensions	sqft	Included
20	Pantry	5'1" x 10'0"	51 sq. ft	Yes
21	Laundry	12'9" x 6'2"	79 sq. ft	Yes
22	Hall	11'8" x 3'2"	37 sq. ft	Yes

3706 Derby Drive, Roanoke, Roanoke County, Virginia, United States, 24012

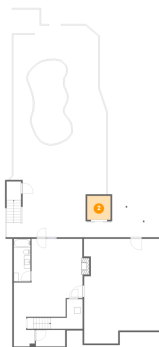
1 Floor 1 - Swimming Pool



Max Dimensions: 12'2" x 26'4"
Calculated Area: 267 sq. ft
Included: No

Heated: No
Finished: No
Enclosed: No
Contiguous: Yes
Permitted: No
Wet space: No
Addition: No
Conversion: No

2 Floor 1 - Shed

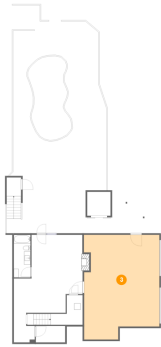


Max Dimensions: 7'4" x 7'6"
Calculated Area: 55 sq. ft
Included: No

Heated: No
Finished: No
Enclosed: No
Contiguous: Yes
Permitted: Yes
Wet space: No
Addition: No
Conversion: No

3706 Derby Drive, Roanoke, Roanoke County, Virginia, United States, 24012

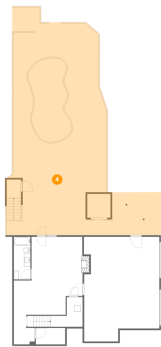
3 Floor 1 - Garage



Max Dimensions: 23'8" x 32'10"
Calculated Area: 710 sq. ft
Included: No

Heated: No
Finished: No
Enclosed: Yes
Contiguous: Yes
Permitted: Yes
Wet space: No
Addition: No
Conversion: No

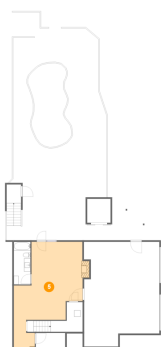
4 Floor 1 - Patio



Max Dimensions: 48'5" x 71'6"
Calculated Area: 2245 sq. ft
Included: No

Heated: No
Finished: Yes
Enclosed: No
Contiguous: Yes
Permitted: Yes
Wet space: No
Addition: No
Conversion: No

5 Floor 1 - Recreation Room

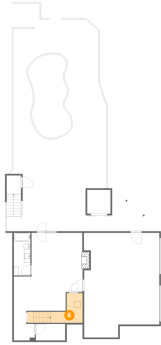


Max Dimensions: 21'7" x 32'10"
Calculated Area: 480 sq. ft
Included: Yes

Heated: Yes
Finished: Yes
Enclosed: Yes
Contiguous: Yes
Permitted: Yes
Wet space: No
Addition: No
Conversion: No

3706 Derby Drive, Roanoke, Roanoke County, Virginia, United States, 24012

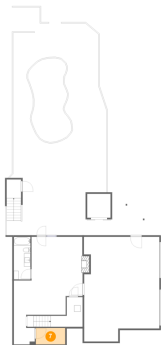
6 Floor 1 - Utility



Max Dimensions: 10'0" x 9'4"
Calculated Area: 89 sq. ft
Included: No

Heated: Yes
Finished: No
Enclosed: Yes
Contiguous: Yes
Permitted: Yes
Wet space: No
Addition: No
Conversion: No

7 Floor 1 - Room



Max Dimensions: 9'3" x 5'2"
Calculated Area: 48 sq. ft
Included: Yes

Heated: Yes
Finished: Yes
Enclosed: Yes
Contiguous: Yes
Permitted: Yes
Wet space: No
Addition: No
Conversion: No

8 Floor 1 - Bath



Max Dimensions: 5'2" x 13'4"
Calculated Area: 70 sq. ft
Included: Yes

Heated: Yes
Finished: Yes
Enclosed: Yes
Contiguous: Yes
Permitted: Yes
Wet space: Yes
Addition: No
Conversion: No

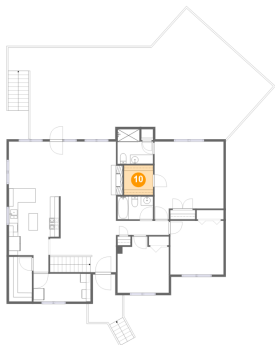
9 Floor 2 - Bedroom



Max Dimensions: 11'10" x 11'11"
Calculated Area: 141 sq. ft
Included: Yes

Heated: Yes
Finished: Yes
Enclosed: Yes
Contiguous: Yes
Permitted: Yes
Wet space: No
Addition: No
Conversion: No

10 Floor 2 - W.I.C.



Max Dimensions: 6'5" x 6'7"
Calculated Area: 43 sq. ft
Included: Yes

Heated: Yes
Finished: Yes
Enclosed: Yes
Contiguous: Yes
Permitted: Yes
Wet space: No
Addition: No
Conversion: No

11 Floor 2 - Deck

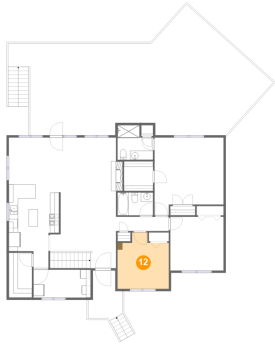


Max Dimensions: 53'10" x 29'1"
Calculated Area: 1155 sq. ft
Included: No

Heated: No
Finished: Yes
Enclosed: No
Contiguous: Yes
Permitted: Yes
Wet space: No
Addition: No
Conversion: No

3706 Derby Drive, Roanoke, Roanoke County, Virginia, United States, 24012

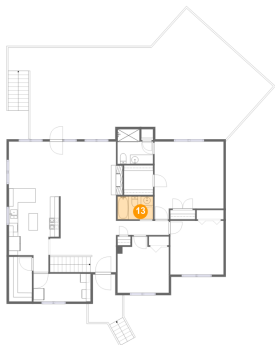
12 Floor 2 - Bedroom



Max Dimensions: 11'5" x 12'6"
Calculated Area: 125 sq. ft
Included: Yes

Heated: Yes
Finished: Yes
Enclosed: Yes
Contiguous: Yes
Permitted: Yes
Wet space: No
Addition: No
Conversion: No

13 Floor 2 - Bath



Max Dimensions: 7'11" x 5'1"
Calculated Area: 40 sq. ft
Included: Yes

Heated: Yes
Finished: Yes
Enclosed: Yes
Contiguous: Yes
Permitted: Yes
Wet space: Yes
Addition: No
Conversion: No

14 Floor 2 - Primary Bedroom



Max Dimensions: 15'4" x 17'3"
Calculated Area: 236 sq. ft
Included: Yes

Heated: Yes
Finished: Yes
Enclosed: Yes
Contiguous: Yes
Permitted: Yes
Wet space: No
Addition: No
Conversion: No

3706 Derby Drive, Roanoke, Roanoke County, Virginia, United States, 24012

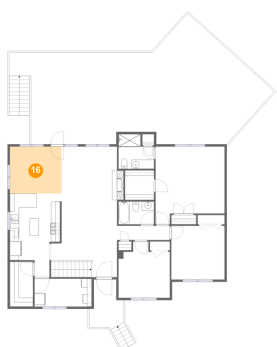
15 Floor 2 - Living Room



Max Dimensions: 14'8" x 29'0"
Calculated Area: 385 sq. ft
Included: Yes

Heated: Yes
Finished: Yes
Enclosed: Yes
Contiguous: Yes
Permitted: Yes
Wet space: No
Addition: No
Conversion: No

16 Floor 2 - Dining Area



Max Dimensions: 11'6" x 10'5"
Calculated Area: 120 sq. ft
Included: Yes

Heated: Yes
Finished: Yes
Enclosed: Yes
Contiguous: Yes
Permitted: Yes
Wet space: No
Addition: No
Conversion: No

17 Floor 2 - Kitchen

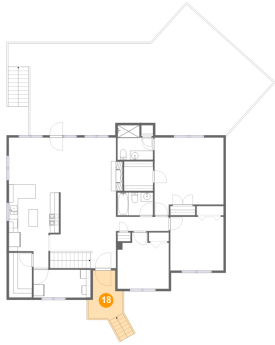


Max Dimensions: 11'6" x 18'7"
Calculated Area: 169 sq. ft
Included: Yes

Heated: Yes
Finished: Yes
Enclosed: Yes
Contiguous: Yes
Permitted: Yes
Wet space: No
Addition: No
Conversion: No

3706 Derby Drive, Roanoke, Roanoke County, Virginia, United States, 24012

18 Floor 2 - Porch



Max Dimensions: 7'8" x 11'1"
Calculated Area: 92 sq. ft
Included: No

Heated: No
Finished: Yes
Enclosed: No
Contiguous: Yes
Permitted: Yes
Wet space: No
Addition: No
Conversion: No

19 Floor 2 - Bath



Max Dimensions: 7'10" x 7'8"
Calculated Area: 53 sq. ft
Included: Yes

Heated: Yes
Finished: Yes
Enclosed: Yes
Contiguous: Yes
Permitted: Yes
Wet space: Yes
Addition: No
Conversion: No

20 Floor 2 - Pantry



Max Dimensions: 5'1" x 10'0"
Calculated Area: 51 sq. ft
Included: Yes

Heated: Yes
Finished: Yes
Enclosed: Yes
Contiguous: Yes
Permitted: Yes
Wet space: No
Addition: No
Conversion: No

3706 Derby Drive, Roanoke, Roanoke County, Virginia, United States, 24012

21 Floor 2 - Laundry



Max Dimensions: 12'9" x 6'2"
Calculated Area: 79 sq. ft
Included: Yes

Heated: Yes
Finished: Yes
Enclosed: Yes
Contiguous: Yes
Permitted: Yes
Wet space: No
Addition: No
Conversion: No

22 Floor 2 - Hall



Max Dimensions: 11'8" x 3'2"
Calculated Area: 37 sq. ft
Included: Yes

Heated: Yes
Finished: Yes
Enclosed: Yes
Contiguous: Yes
Permitted: Yes
Wet space: No
Addition: No
Conversion: No