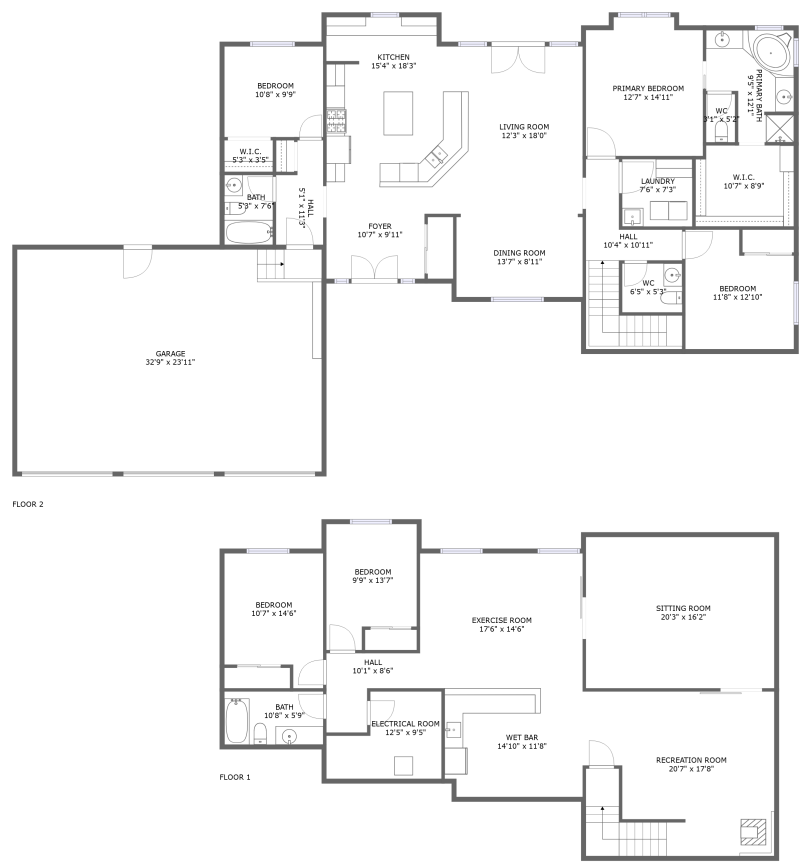




Home report


694 Jaymers Ln,Granite,WY,US




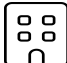
Property summary


**1** Garages


**5** Bedrooms

**3** Bathrooms

**1** Half baths

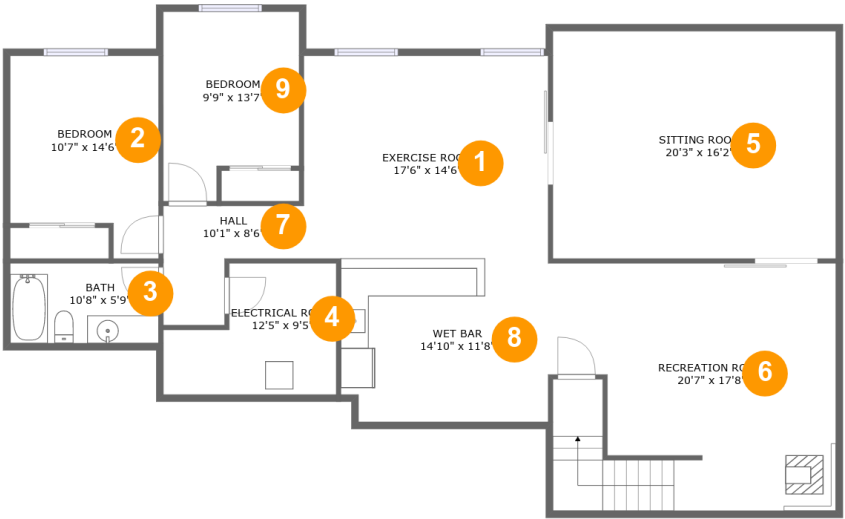
**2** Floors

**3,523** Gross living area sqft

**4,457** Total sqft

Home report

694 Jaymers Ln,Granite,WY,US



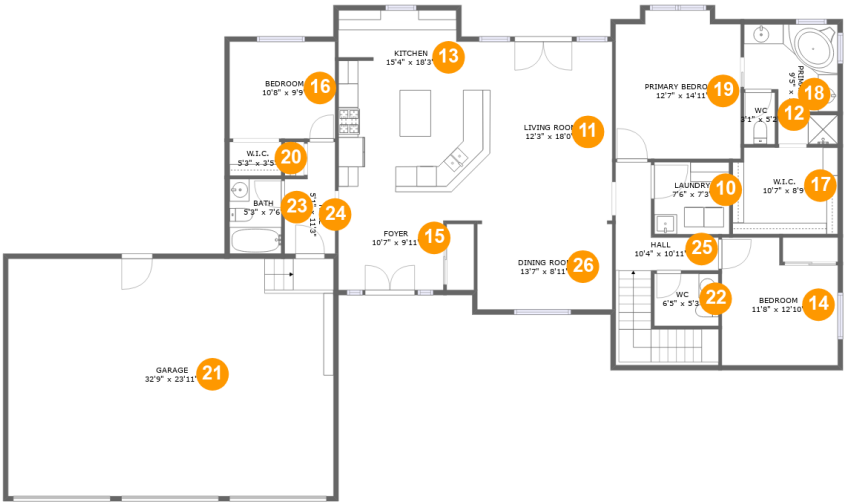
Room dimensions

Floor 1Total sqft: 1752    Living area: 1650

#		Dimensions	sqft	Counted as living area
1	Exercise Room	17'6" x 14'6"	254 sq. ft	Yes
2	Bedroom	10'7" x 14'6"	135 sq. ft	Yes
3	Bath	10'8" x 5'9"	61 sq. ft	Yes
4	Electrical Room	12'5" x 9'5"	94 sq. ft	No
5	Sitting Room	20'3" x 16'2"	330 sq. ft	Yes
6	Recreation Room	20'7" x 17'8"	356 sq. ft	Yes
7	Hall	10'1" x 8'6"	59 sq. ft	Yes
8	Wet Bar	14'10" x 11'8"	171 sq. ft	Yes
9	Bedroom	9'9" x 13'7"	117 sq. ft	Yes

Home report

694 Jaymers Ln,Granite,WY,US



Room dimensions

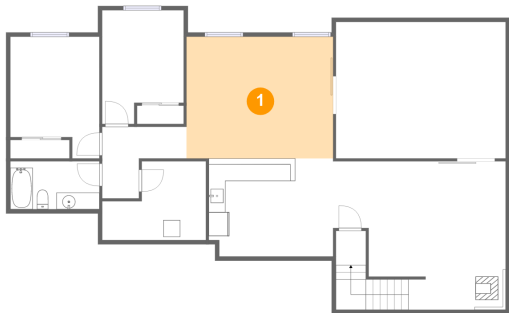
Floor 2 Total sqft: 2705    Living area: 1873

#		Dimensions	sqft	Counted as living area
10	Laundry	7'6" x 7'3"	55 sq. ft	Yes
11	Living Room	12'3" x 18'0"	221 sq. ft	Yes
12	WC	3'1" x 5'2"	16 sq. ft	Yes
13	Kitchen	15'4" x 18'3"	267 sq. ft	Yes
14	Bedroom	11'8" x 12'10"	134 sq. ft	Yes
15	Foyer	10'7" x 9'11"	118 sq. ft	Yes
16	Bedroom	10'8" x 9'9"	104 sq. ft	Yes
17	W.I.C.	10'7" x 8'9"	91 sq. ft	Yes
18	Primary Bath	9'5" x 12'1"	94 sq. ft	Yes
19	Primary Bedroom	12'7" x 14'11"	180 sq. ft	Yes
20	W.I.C.	5'3" x 3'5"	18 sq. ft	Yes

694 Jaymers Ln,Granite,WY,US

#		Dimensions	sqft	Counted as living area
21	Garage	32'9" x 23'11"	782 sq. ft	No
22	WC	6'5" x 5'3"	34 sq. ft	Yes
23	Bath	5'3" x 7'6"	39 sq. ft	Yes
24	Hall	5'1" x 11'3"	49 sq. ft	Yes
25	Hall	10'4" x 10'11"	120 sq. ft	Yes
26	Dining Room	13'7" x 8'11"	121 sq. ft	Yes

1 Floor 1 - Exercise Room



Dimensions: 17'6" x 14'6"  
Area: 254 sq. ft  
Counted as living area: Yes

Heated: Yes  
Finished: Yes  
Enclosed: Yes  
Contiguous: Yes  
Permitted: Yes  
Wet space: No  
Addition: No  
Conversion: No

2 Floor 1 - Bedroom



Dimensions: 10'7" x 14'6"  
Area: 135 sq. ft  
Counted as living area: Yes

Heated: Yes  
Finished: Yes  
Enclosed: Yes  
Contiguous: Yes  
Permitted: Yes  
Wet space: No  
Addition: No  
Conversion: No

3 Floor 1 - Bath



Dimensions: 10'8" x 5'9"  
Area: 61 sq. ft  
Counted as living area: Yes

Heated: Yes  
Finished: Yes  
Enclosed: Yes  
Contiguous: Yes  
Permitted: Yes  
Wet space: Yes  
Addition: No  
Conversion: No

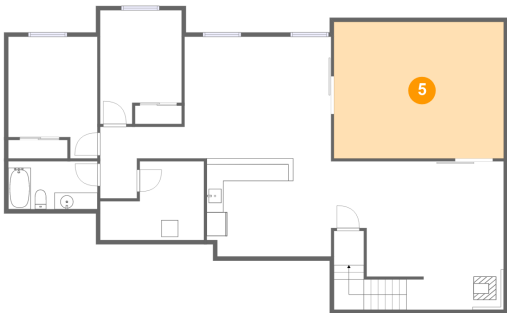
4 Floor 1 - Electrical Room



Dimensions: 12'5" x 9'5"  
Area: 94 sq. ft  
Counted as living area: No

Heated: No  
Finished: No  
Enclosed: Yes  
Contiguous: Yes  
Permitted: Yes  
Wet space: No  
Addition: No  
Conversion: No

5 Floor 1 - Sitting Room



Dimensions: 20'3" x 16'2"  
Area: 330 sq. ft  
Counted as living area: Yes

Heated: Yes  
Finished: Yes  
Enclosed: Yes  
Contiguous: Yes  
Permitted: Yes  
Wet space: No  
Addition: No  
Conversion: No

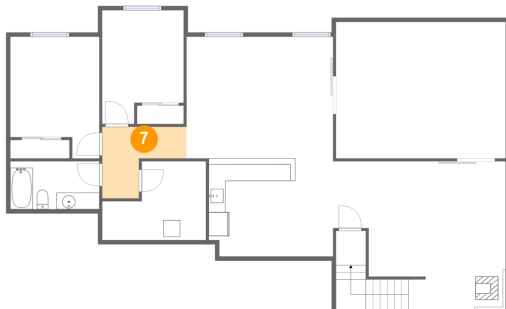
## 6 Floor 1 - Recreation Room



Dimensions: 20'7" x 17'8"  
Area: 356 sq. ft  
Counted as living area: Yes

Heated: Yes  
Finished: Yes  
Enclosed: Yes  
Contiguous: Yes  
Permitted: Yes  
Wet space: No  
Addition: No  
Conversion: No

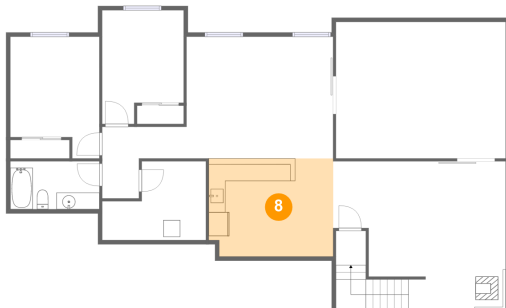
## 7 Floor 1 - Hall



Dimensions: 10'1" x 8'6"  
Area: 59 sq. ft  
Counted as living area: Yes

Heated: Yes  
Finished: Yes  
Enclosed: Yes  
Contiguous: Yes  
Permitted: Yes  
Wet space: No  
Addition: No  
Conversion: No

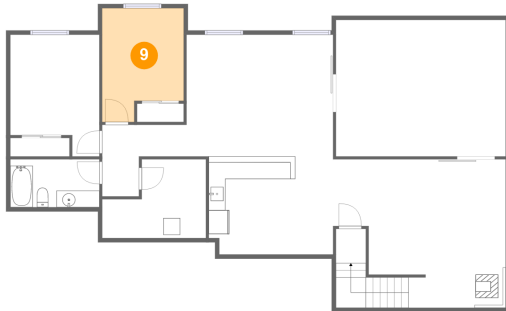
## 8 Floor 1 - Wet Bar



Dimensions: 14'10" x 11'8"  
Area: 171 sq. ft  
Counted as living area: Yes

Heated: Yes  
Finished: Yes  
Enclosed: Yes  
Contiguous: Yes  
Permitted: Yes  
Wet space: No  
Addition: No  
Conversion: No

## 9 Floor 1 - Bedroom



Dimensions: 9'9" x 13'7"  
Area: 117 sq. ft  
Counted as living area: Yes

Heated: Yes  
Finished: Yes  
Enclosed: Yes  
Contiguous: Yes  
Permitted: Yes  
Wet space: No  
Addition: No  
Conversion: No

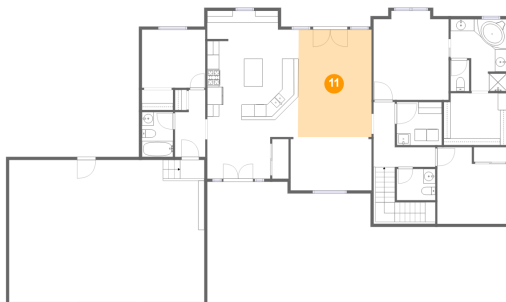
## 10 Floor 2 - Laundry



Dimensions: 7'6" x 7'3"  
Area: 55 sq. ft  
Counted as living area: Yes

Heated: Yes  
Finished: Yes  
Enclosed: Yes  
Contiguous: Yes  
Permitted: Yes  
Wet space: No  
Addition: No  
Conversion: No

## 11 Floor 2 - Living Room



Dimensions: 12'3" x 18'0"  
Area: 221 sq. ft  
Counted as living area: Yes

Heated: Yes  
Finished: Yes  
Enclosed: Yes  
Contiguous: Yes  
Permitted: Yes  
Wet space: No  
Addition: No  
Conversion: No



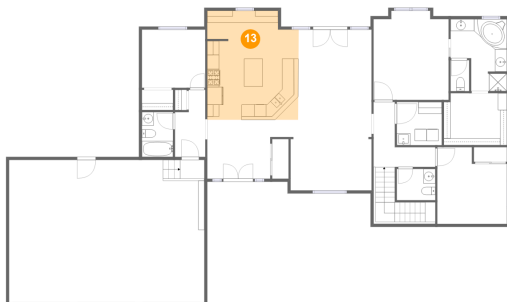
## 12 Floor 2 - WC



Dimensions: 3'1" x 5'2"  
Area: 16 sq. ft  
Counted as living area: Yes

Heated: Yes  
Finished: Yes  
Enclosed: Yes  
Contiguous: Yes  
Permitted: Yes  
Wet space: Yes  
Addition: No  
Conversion: No

## 13 Floor 2 - Kitchen



Dimensions: 15'4" x 18'3"  
Area: 267 sq. ft  
Counted as living area: Yes

Heated: Yes  
Finished: Yes  
Enclosed: Yes  
Contiguous: Yes  
Permitted: Yes  
Wet space: No  
Addition: No  
Conversion: No

## 14 Floor 2 - Bedroom



Dimensions: 11'8" x 12'10"  
Area: 134 sq. ft  
Counted as living area: Yes

Heated: Yes  
Finished: Yes  
Enclosed: Yes  
Contiguous: Yes  
Permitted: Yes  
Wet space: No  
Addition: No  
Conversion: No

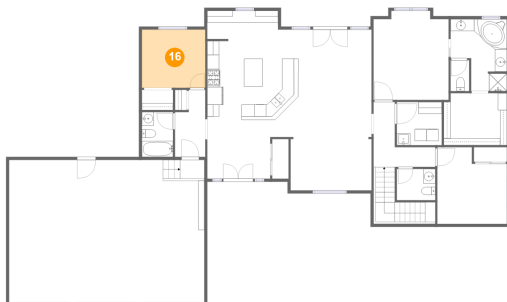
## 15 Floor 2 - Foyer



Dimensions: 10'7" x 9'11"  
Area: 118 sq. ft  
Counted as living area: Yes

Heated: Yes  
Finished: Yes  
Enclosed: Yes  
Contiguous: Yes  
Permitted: Yes  
Wet space: No  
Addition: No  
Conversion: No

## 16 Floor 2 - Bedroom



Dimensions: 10'8" x 9'9"  
Area: 104 sq. ft  
Counted as living area: Yes

Heated: Yes  
Finished: Yes  
Enclosed: Yes  
Contiguous: Yes  
Permitted: Yes  
Wet space: No  
Addition: No  
Conversion: No

## 17 Floor 2 - W.I.C.



Dimensions: 10'7" x 8'9"  
Area: 91 sq. ft  
Counted as living area: Yes

Heated: Yes  
Finished: Yes  
Enclosed: Yes  
Contiguous: Yes  
Permitted: Yes  
Wet space: No  
Addition: No  
Conversion: No

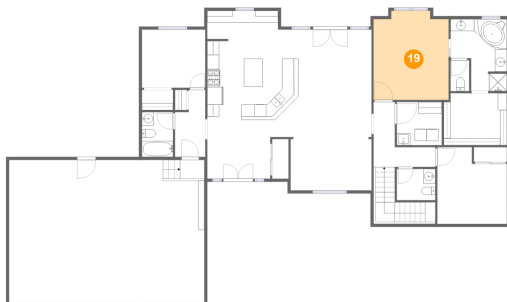
## 18 Floor 2 - Primary Bath



Dimensions: 9'5" x 12'1"  
Area: 94 sq. ft  
Counted as living area: Yes

Heated: Yes  
Finished: Yes  
Enclosed: Yes  
Contiguous: Yes  
Permitted: Yes  
Wet space: Yes  
Addition: No  
Conversion: No

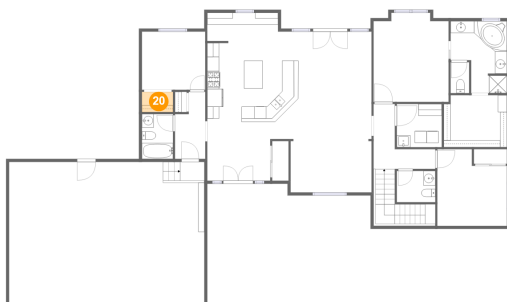
## 19 Floor 2 - Primary Bedroom



Dimensions: 12'7" x 14'11"  
Area: 180 sq. ft  
Counted as living area: Yes

Heated: Yes  
Finished: Yes  
Enclosed: Yes  
Contiguous: Yes  
Permitted: Yes  
Wet space: No  
Addition: No  
Conversion: No

## 20 Floor 2 - W.I.C.



Dimensions: 5'3" x 3'5"  
Area: 18 sq. ft  
Counted as living area: Yes

Heated: Yes  
Finished: Yes  
Enclosed: Yes  
Contiguous: Yes  
Permitted: Yes  
Wet space: No  
Addition: No  
Conversion: No

21 Floor 2 - Garage



Dimensions: 32'9" x 23'11"  
Area: 782 sq. ft  
Counted as living area: No

Heated: No  
Finished: No  
Enclosed: Yes  
Contiguous: Yes  
Permitted: Yes  
Wet space: No  
Addition: No  
Conversion: No

22 Floor 2 - WC



Dimensions: 6'5" x 5'3"  
Area: 34 sq. ft  
Counted as living area: Yes

Heated: Yes  
Finished: Yes  
Enclosed: Yes  
Contiguous: Yes  
Permitted: Yes  
Wet space: Yes  
Addition: No  
Conversion: No

23 Floor 2 - Bath



Dimensions: 5'3" x 7'6"  
Area: 39 sq. ft  
Counted as living area: Yes

Heated: Yes  
Finished: Yes  
Enclosed: Yes  
Contiguous: Yes  
Permitted: Yes  
Wet space: Yes  
Addition: No  
Conversion: No

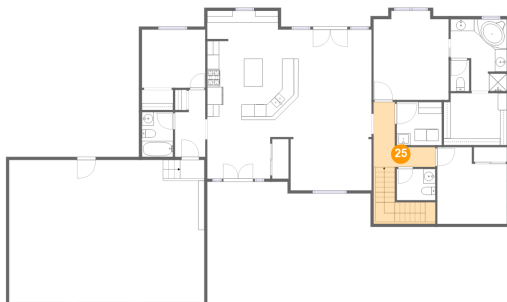
## 24 Floor 2 - Hall



Dimensions: 5'1" x 11'3"  
Area: 49 sq. ft  
Counted as living area: Yes

Heated: Yes  
Finished: Yes  
Enclosed: Yes  
Contiguous: Yes  
Permitted: Yes  
Wet space: No  
Addition: No  
Conversion: No

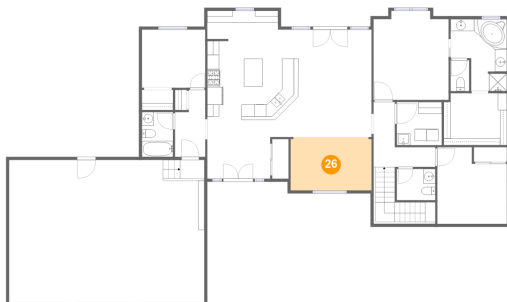
## 25 Floor 2 - Hall



Dimensions: 10'4" x 10'11"  
Area: 120 sq. ft  
Counted as living area: Yes

Heated: Yes  
Finished: Yes  
Enclosed: Yes  
Contiguous: Yes  
Permitted: Yes  
Wet space: No  
Addition: No  
Conversion: No

## 26 Floor 2 - Dining Room



Dimensions: 13'7" x 8'11"  
Area: 121 sq. ft  
Counted as living area: Yes

Heated: Yes  
Finished: Yes  
Enclosed: Yes  
Contiguous: Yes  
Permitted: Yes  
Wet space: No  
Addition: No  
Conversion: No