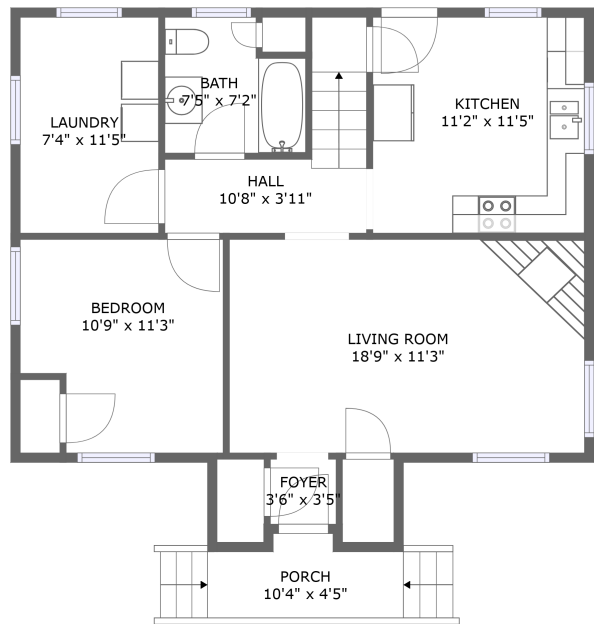
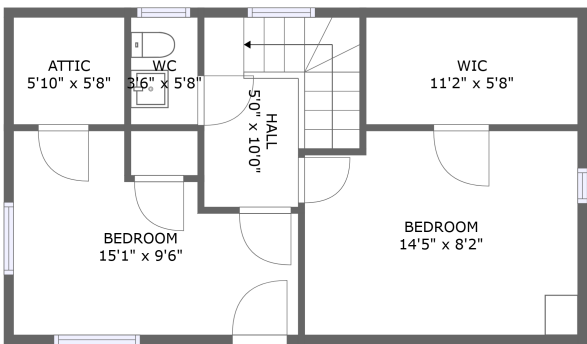


Home report

904 Westview Street, Narrows, Giles County, Virginia, United States, 24124





FLOOR 1





FLOOR 2


Property summary


 **0** Garages


 **3** Bedrooms

 **1** Bathrooms

 **1** Half baths

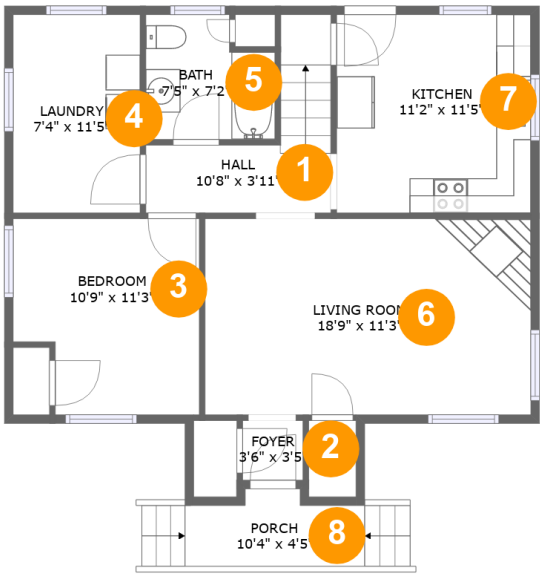
 **2** Floors

 **1,137** Gross living area sqft

 **1,392** Total sqft

Home report

904 Westview Street, Narrows, Giles County, Virginia, United States, 24124

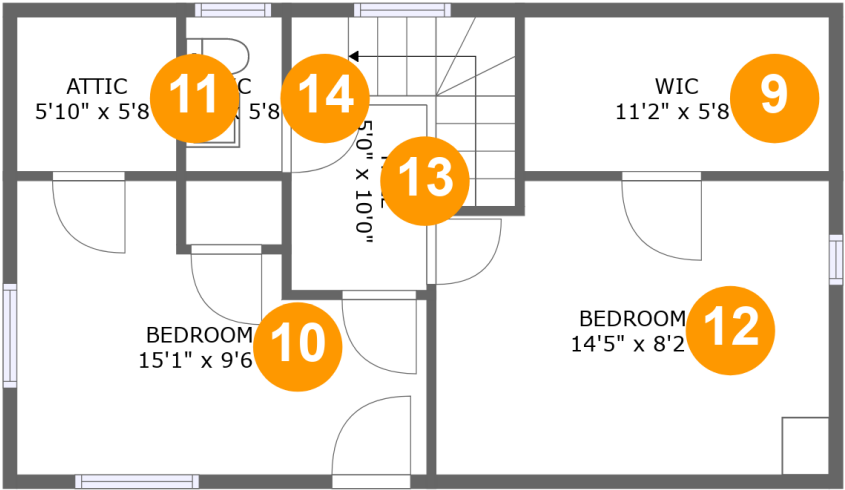


Room dimensions

Floor 1 Total sqft: 844    Living area: 787

#		Dimensions	sqft	Counted as living area
1	Hall	10'8" x 3'11"	63 sq. ft	Yes
2	Foyer	3'6" x 3'5"	12 sq. ft	Yes
3	Bedroom	10'9" x 11'3"	111 sq. ft	Yes
4	Laundry	7'4" x 11'5"	83 sq. ft	Yes
5	Bath	7'5" x 7'2"	48 sq. ft	Yes
6	Living Room	18'9" x 11'3"	212 sq. ft	Yes
7	Kitchen	11'2" x 11'5"	128 sq. ft	Yes
8	Porch	10'4" x 4'5"	57 sq. ft	No

904 Westview Street, Narrows, Giles County, Virginia, United States, 24124



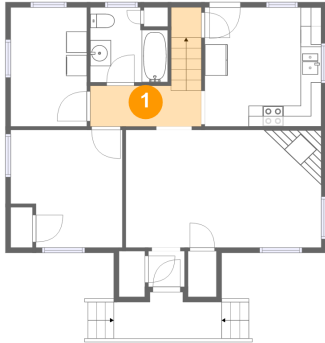
Room dimensions

Floor 2 Total sqft: 548    Living area: 350

#		Dimensions	sqft	Counted as living area
9	Wic	11'2" x 5'8"	63 sq. ft	No
10	Bedroom	15'1" x 9'6"	100 sq. ft	Yes
11	Attic	5'10" x 5'8"	33 sq. ft	No
12	Bedroom	14'5" x 8'2"	117 sq. ft	Yes
13	Hall	5'0" x 10'0"	73 sq. ft	Yes
14	WC	3'6" x 5'8"	20 sq. ft	Yes

904 Westview Street, Narrows, Giles County, Virginia, United States, 24124

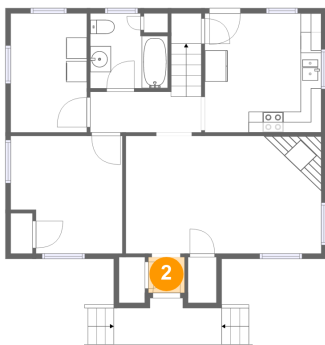
## 1 Floor 1 - Hall



Dimensions: 10'8" x 3'11"  
Area: 63 sq. ft  
Counted as living area: Yes

Heated: Yes  
Finished: Yes  
Enclosed: Yes  
Contiguous: Yes  
Permitted: Yes  
Wet space: No  
Addition: No  
Conversion: No

## 2 Floor 1 - Foyer



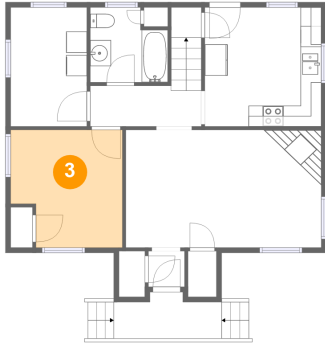
Dimensions: 3'6" x 3'5"  
Area: 12 sq. ft  
Counted as living area: Yes

Heated: Yes  
Finished: Yes  
Enclosed: Yes  
Contiguous: Yes  
Permitted: Yes  
Wet space: No  
Addition: No  
Conversion: No

## Home report

904 Westview Street, Narrows, Giles County, Virginia, United States, 24124

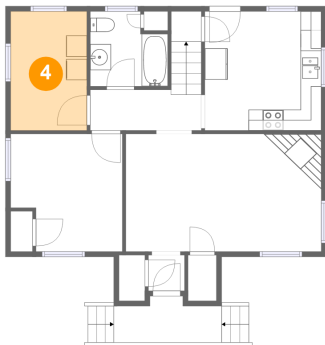
### 3 Floor 1 - Bedroom



Dimensions: 10'9" x 11'3"  
Area: 111 sq. ft  
Counted as living area: Yes

Heated: Yes  
Finished: Yes  
Enclosed: Yes  
Contiguous: Yes  
Permitted: Yes  
Wet space: No  
Addition: No  
Conversion: No

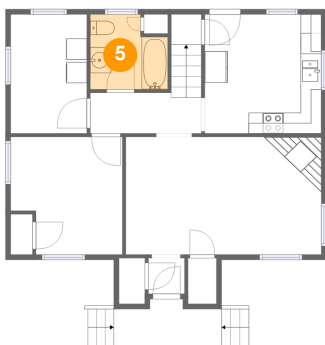
### 4 Floor 1 - Laundry



Dimensions: 7'4" x 11'5"  
Area: 83 sq. ft  
Counted as living area: Yes

Heated: Yes  
Finished: Yes  
Enclosed: Yes  
Contiguous: Yes  
Permitted: Yes  
Wet space: No  
Addition: No  
Conversion: No

### 5 Floor 1 - Bath



Dimensions: 7'5" x 7'2"  
Area: 48 sq. ft  
Counted as living area: Yes

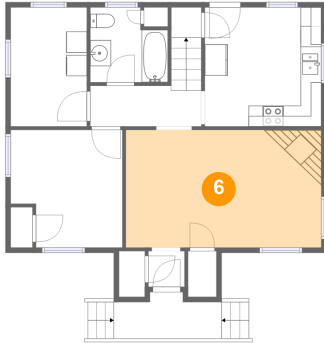
Heated: Yes  
Finished: Yes  
Enclosed: Yes  
Contiguous: Yes  
Permitted: Yes  
Wet space: Yes  
Addition: No  
Conversion: No

## Home report

904 Westview Street, Narrows, Giles County, Virginia, United States, 24124

### 6 Floor 1 - Living Room

---

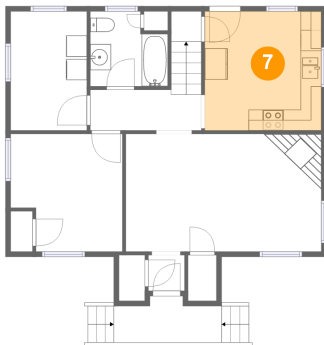


Dimensions: 18'9" x 11'3"  
Area: 212 sq. ft  
Counted as living area: Yes

Heated: Yes  
Finished: Yes  
Enclosed: Yes  
Contiguous: Yes  
Permitted: Yes  
Wet space: No  
Addition: No  
Conversion: No

### 7 Floor 1 - Kitchen

---

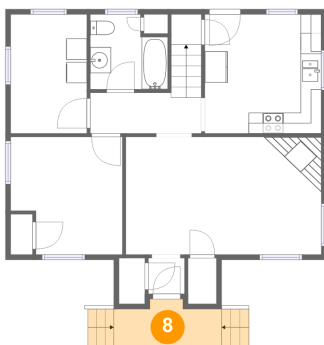


Dimensions: 11'2" x 11'5"  
Area: 128 sq. ft  
Counted as living area: Yes

Heated: Yes  
Finished: Yes  
Enclosed: Yes  
Contiguous: Yes  
Permitted: Yes  
Wet space: No  
Addition: No  
Conversion: No

### 8 Floor 1 - Porch

---



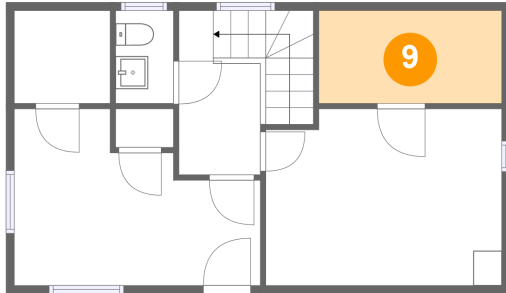
Dimensions: 10'4" x 4'5"  
Area: 57 sq. ft  
Counted as living area: No

Heated: No  
Finished: Yes  
Enclosed: No  
Contiguous: Yes  
Permitted: Yes  
Wet space: No  
Addition: No  
Conversion: No

## Home report

904 Westview Street, Narrows, Giles County, Virginia, United States, 24124

### 9 Floor 2 - Wic



Dimensions: 11'2" x 5'8"  
Area: 63 sq. ft  
Counted as living area: No

Heated: Yes  
Finished: No  
Enclosed: Yes  
Contiguous: Yes  
Permitted: Yes  
Wet space: No  
Addition: No  
Conversion: No

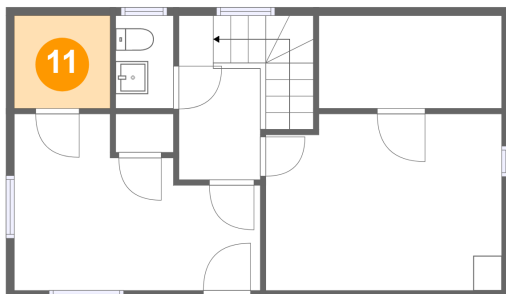
### 10 Floor 2 - Bedroom



Dimensions: 15'1" x 9'6"  
Area: 100 sq. ft  
Counted as living area: Yes

Heated: Yes  
Finished: Yes  
Enclosed: Yes  
Contiguous: Yes  
Permitted: Yes  
Wet space: No  
Addition: No  
Conversion: No

### 11 Floor 2 - Attic

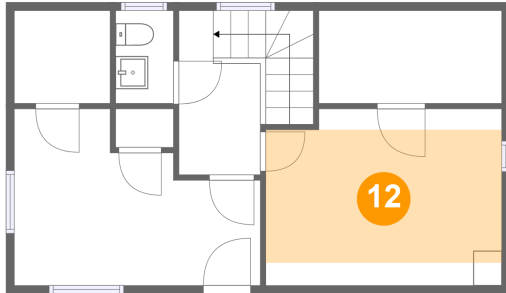


Dimensions: 5'10" x 5'8"  
Area: 33 sq. ft  
Counted as living area: No

Heated: No  
Finished: No  
Enclosed: Yes  
Contiguous: No  
Permitted: Yes  
Wet space: No  
Addition: No  
Conversion: No

904 Westview Street, Narrows, Giles County, Virginia, United States, 24124

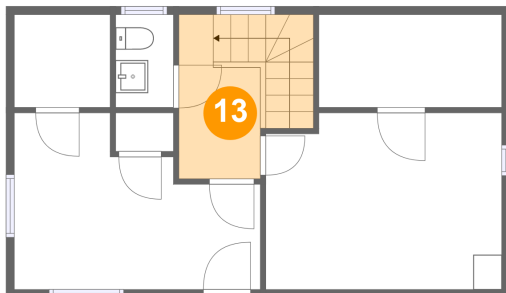
## 12 Floor 2 - Bedroom



Dimensions: 14'5" x 8'2"  
Area: 117 sq. ft  
Counted as living area: Yes

Heated: Yes  
Finished: Yes  
Enclosed: Yes  
Contiguous: Yes  
Permitted: Yes  
Wet space: No  
Addition: No  
Conversion: No

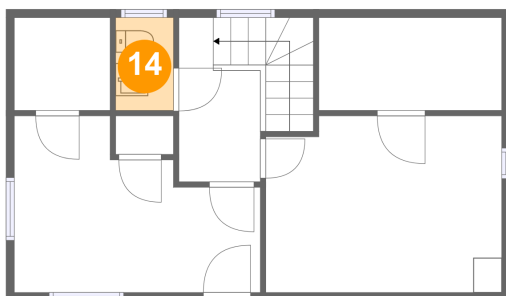
## 13 Floor 2 - Hall



Dimensions: 5'0" x 10'0"  
Area: 73 sq. ft  
Counted as living area: Yes

Heated: Yes  
Finished: Yes  
Enclosed: Yes  
Contiguous: Yes  
Permitted: Yes  
Wet space: No  
Addition: No  
Conversion: No

## 14 Floor 2 - WC



Dimensions: 3'6" x 5'8"  
Area: 20 sq. ft  
Counted as living area: Yes

Heated: Yes  
Finished: Yes  
Enclosed: Yes  
Contiguous: Yes  
Permitted: Yes  
Wet space: Yes  
Addition: No  
Conversion: No