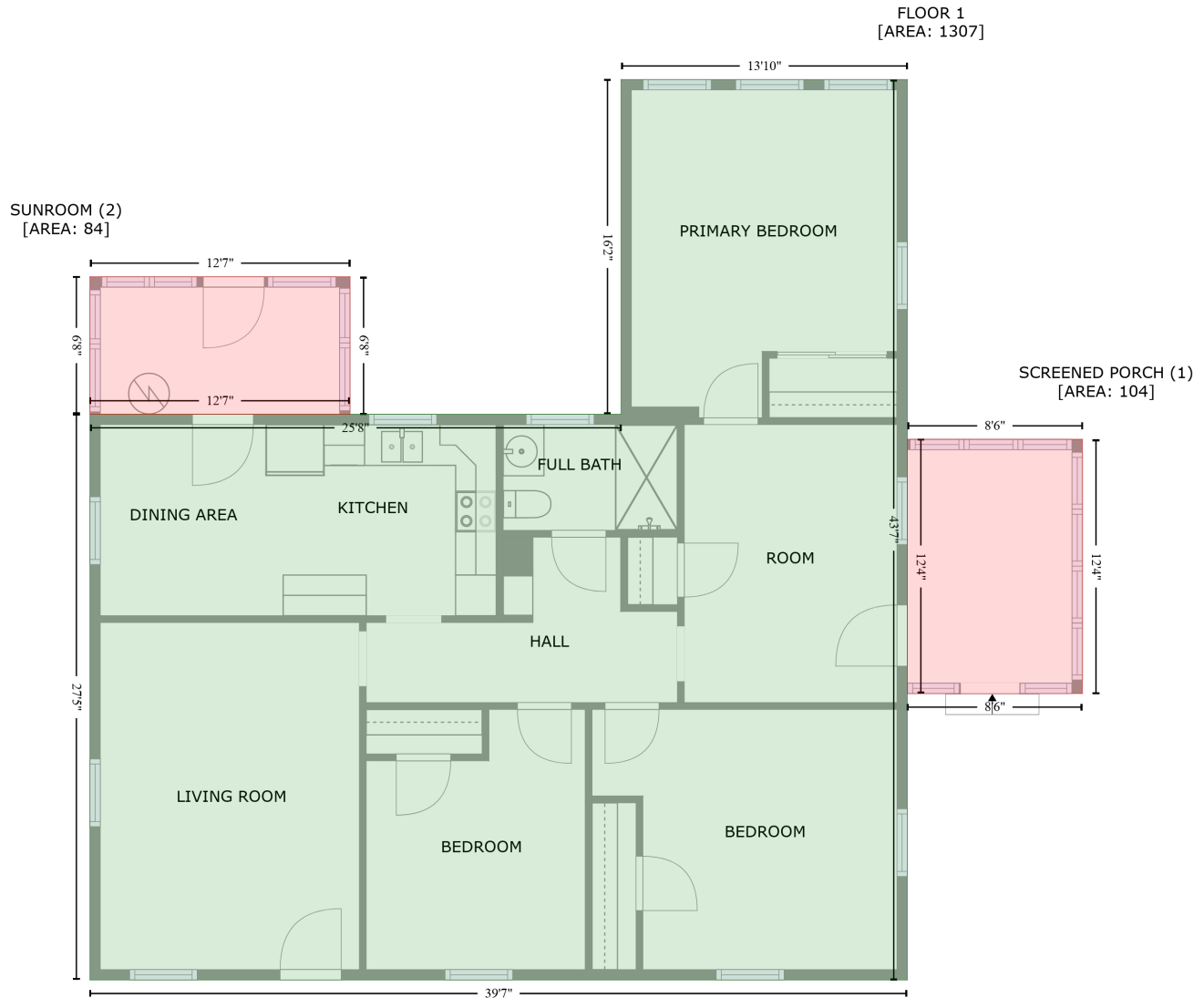


# 210 North Hoyle Street, Cherryville, Gaston County, North Carolina, United States, 28021

Gross Living Area: 1307 sq. ft



Space	Area (sq. ft)	Calculation <small>Coordinate Polygon Area Algorithm using inches</small>
FLOOR 1 (Living area)	1307	$-\left((506.4 + 506.4) * (-3.3 - 519.8) + (506.4 + 31.9) * (519.8 - 519.8) + (31.9 + 31.9) * (519.8 - 191.2) + (31.9 + 340.2) * (191.2 - 191.2) + (340.2 + 340.2) * (191.2 - -3.3) + (340.2 + 506.4) * (-3.3 - -3.3)\right) * 0.5 * 0.00694$
SCREENED PORCH (Non-living area)	104	$-\left((608 + 608) * (205.7 - 353.4) + (608 + 506.4) * (353.4 - 353.4) + (506.4 + 506.4) * (353.4 - 205.7) + (506.4 + 608) * (205.7 - 205.7)\right) * 0.5 * 0.00694$
SUNROOM (Non-living area)	84	$-\left((182.8 + 182.8) * (111.3 - 191.2) + (182.8 + 31.9) * (191.2 - 191.2) + (31.9 + 31.9) * (191.2 - 111.3) + (31.9 + 182.8) * (111.3 - 111.3)\right) * 0.5 * 0.00694$