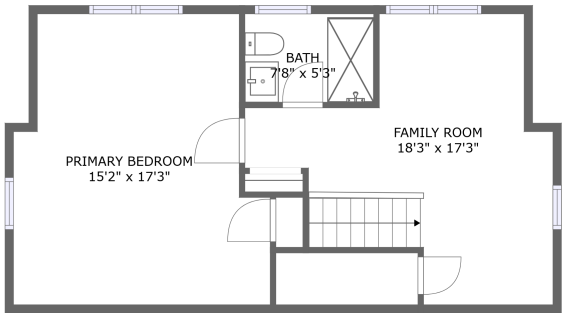
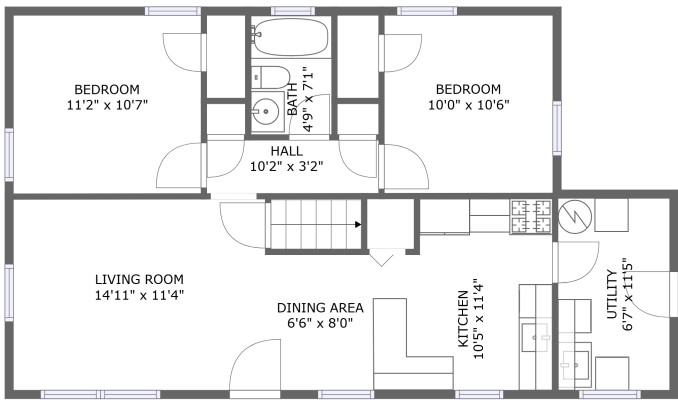


Home report

13205 Okinawa Avenue, Twin Brook, Rockville, Montgomery County, Maryland, United States, 20851



FLOOR 2




FLOOR 1

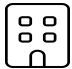
Property summary

**0**
Garages


**3**
Bedrooms

**2**
Bathrooms

**0**
Half baths

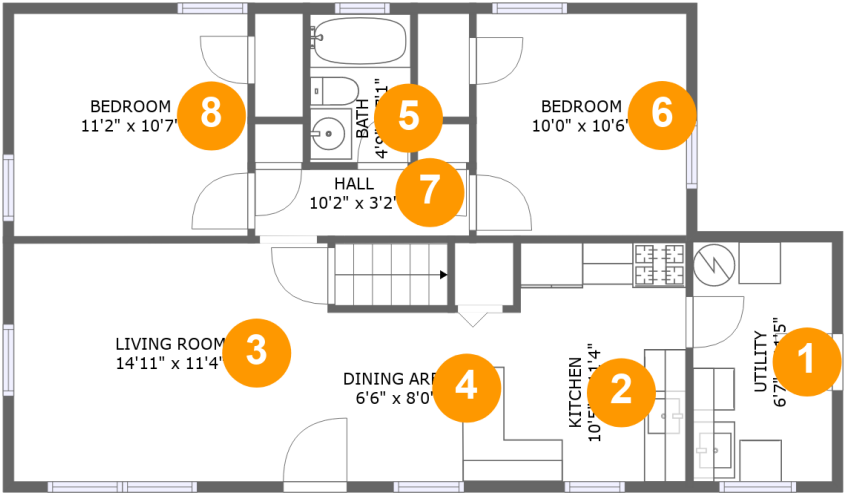
**2**
Floors

**1,432**
Gross living area sqft

**1,432**
Total sqft

Home report

13205 Okinawa Avenue, Twin Brook, Rockville, Montgomery County, Maryland, United States, 20851



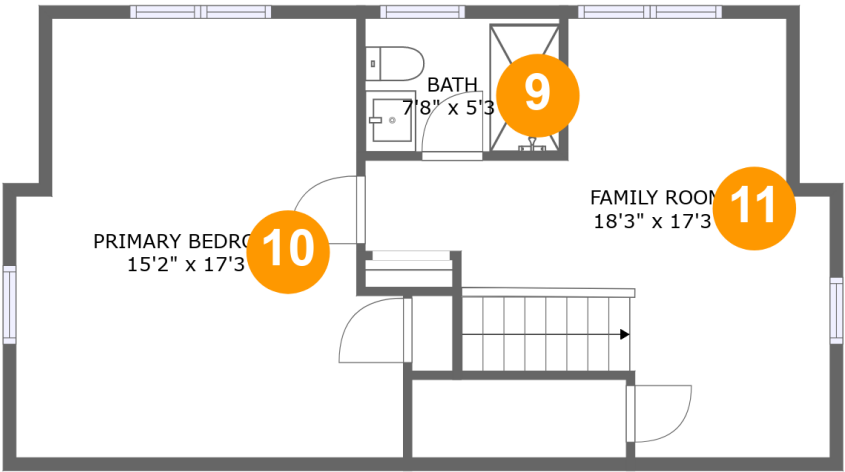
Room dimensions

Floor 1 Total sqft: 852 Living area: 852

#		Dimensions	sqft	Counted as living area
1	Utility	6'7" x 11'5"	75 sq. ft	Yes
2	Kitchen	10'5" x 11'4"	110 sq. ft	Yes
3	Living Room	14'11" x 11'4"	169 sq. ft	Yes
4	Dining Area	6'6" x 8'0"	53 sq. ft	Yes
5	Bath	4'9" x 7'1"	34 sq. ft	Yes
6	Bedroom	10'0" x 10'6"	105 sq. ft	Yes
7	Hall	10'2" x 3'2"	32 sq. ft	Yes
8	Bedroom	11'2" x 10'7"	118 sq. ft	Yes

Home report

13205 Okinawa Avenue, Twin Brook, Rockville, Montgomery County, Maryland, United States, 20851



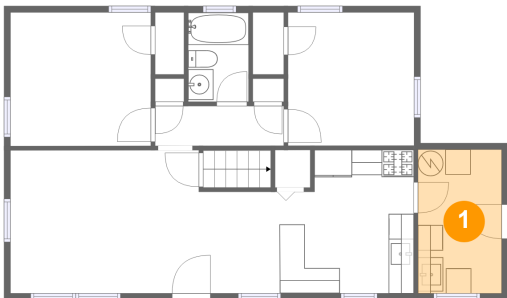
Room dimensions

Floor 2 Total sqft: 580 Living area: 580

#		Dimensions	sqft	Counted as living area
9	Bath	7'8" x 5'3"	40 sq. ft	Yes
10	Primary Bedroom	15'2" x 17'3"	233 sq. ft	Yes
11	Family Room	18'3" x 17'3"	206 sq. ft	Yes

13205 Okinawa Avenue, Twin Brook, Rockville, Montgomery County, Maryland, United States, 20851

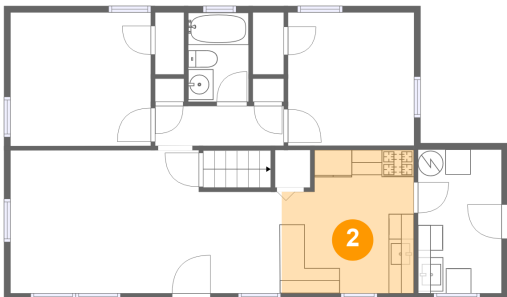
1 Floor 1 - Utility



Dimensions: 6'7" x 11'5"
Area: 75 sq. ft
Counted as living area: Yes

Heated: Yes
Finished: Yes
Enclosed: Yes
Contiguous: Yes
Permitted: Yes
Wet space: No
Addition: No
Conversion: No

2 Floor 1 - Kitchen



Dimensions: 10'5" x 11'4"
Area: 110 sq. ft
Counted as living area: Yes

Heated: Yes
Finished: Yes
Enclosed: Yes
Contiguous: Yes
Permitted: Yes
Wet space: No
Addition: No
Conversion: No

Home report

13205 Okinawa Avenue, Twin Brook, Rockville, Montgomery County, Maryland, United States, 20851

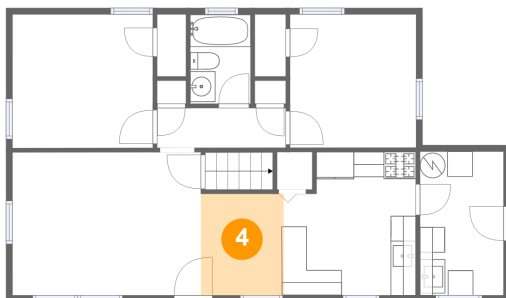
3 Floor 1 - Living Room



Dimensions: 14'11" x 11'4"
Area: 169 sq. ft
Counted as living area: Yes

Heated: Yes
Finished: Yes
Enclosed: Yes
Contiguous: Yes
Permitted: Yes
Wet space: No
Addition: No
Conversion: No

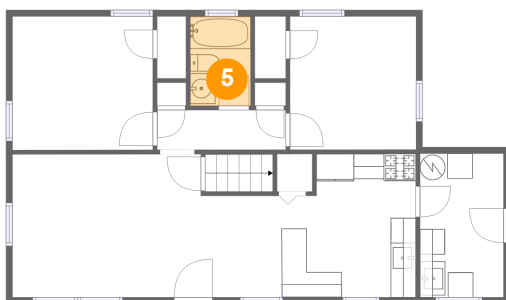
4 Floor 1 - Dining Area



Dimensions: 6'6" x 8'0"
Area: 53 sq. ft
Counted as living area: Yes

Heated: Yes
Finished: Yes
Enclosed: Yes
Contiguous: Yes
Permitted: Yes
Wet space: No
Addition: No
Conversion: No

5 Floor 1 - Bath

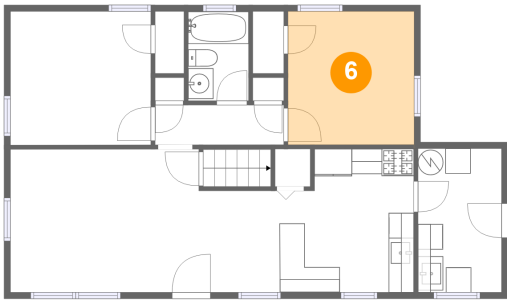


Dimensions: 4'9" x 7'1"
Area: 34 sq. ft
Counted as living area: Yes

Heated: Yes
Finished: Yes
Enclosed: Yes
Contiguous: Yes
Permitted: Yes
Wet space: Yes
Addition: No
Conversion: No

13205 Okinawa Avenue, Twin Brook, Rockville, Montgomery County, Maryland, United States, 20851

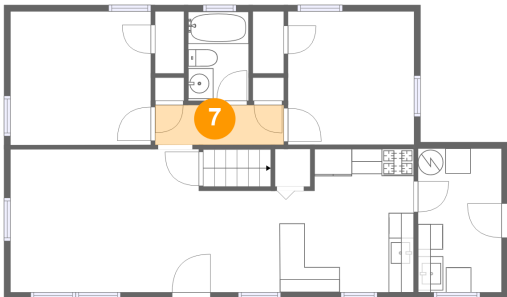
6 Floor 1 - Bedroom



Dimensions: 10'0" x 10'6"
Area: 105 sq. ft
Counted as living area: Yes

Heated: Yes
Finished: Yes
Enclosed: Yes
Contiguous: Yes
Permitted: Yes
Wet space: No
Addition: No
Conversion: No

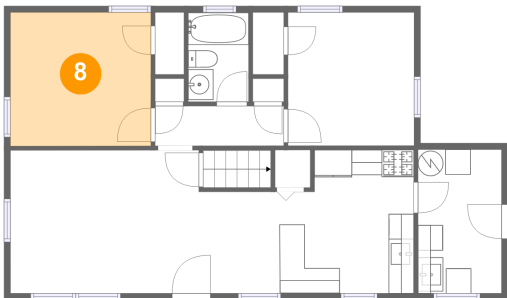
7 Floor 1 - Hall



Dimensions: 10'2" x 3'2"
Area: 32 sq. ft
Counted as living area: Yes

Heated: Yes
Finished: Yes
Enclosed: Yes
Contiguous: Yes
Permitted: Yes
Wet space: No
Addition: No
Conversion: No

8 Floor 1 - Bedroom



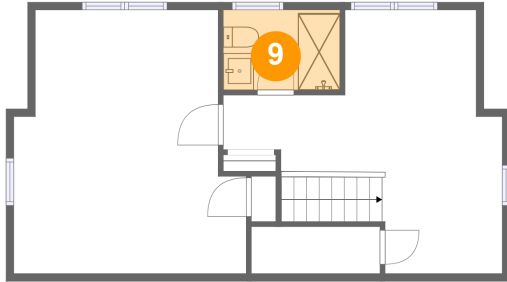
Dimensions: 11'2" x 10'7"
Area: 118 sq. ft
Counted as living area: Yes

Heated: Yes
Finished: Yes
Enclosed: Yes
Contiguous: Yes
Permitted: Yes
Wet space: No
Addition: No
Conversion: No

Home report

13205 Okinawa Avenue, Twin Brook, Rockville, Montgomery County, Maryland, United States, 20851

9 Floor 2 - Bath



Dimensions: 7'8" x 5'3"
Area: 40 sq. ft
Counted as living area: Yes

Heated: Yes
Finished: Yes
Enclosed: Yes
Contiguous: Yes
Permitted: Yes
Wet space: Yes
Addition: No
Conversion: No

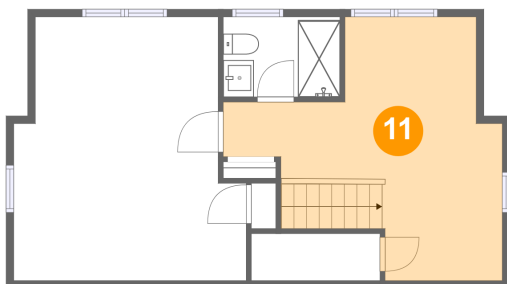
10 Floor 2 - Primary Bedroom



Dimensions: 15'2" x 17'3"
Area: 233 sq. ft
Counted as living area: Yes

Heated: Yes
Finished: Yes
Enclosed: Yes
Contiguous: Yes
Permitted: Yes
Wet space: No
Addition: No
Conversion: No

11 Floor 2 - Family Room



Dimensions: 18'3" x 17'3"
Area: 206 sq. ft
Counted as living area: Yes

Heated: Yes
Finished: Yes
Enclosed: Yes
Contiguous: Yes
Permitted: Yes
Wet space: No
Addition: No
Conversion: No