

1050 Alice Springs Cir, Spring Hill, Tennessee, United States



Property Summary



2 floors



5 bedrooms



3 bathrooms



4,924 total sqft

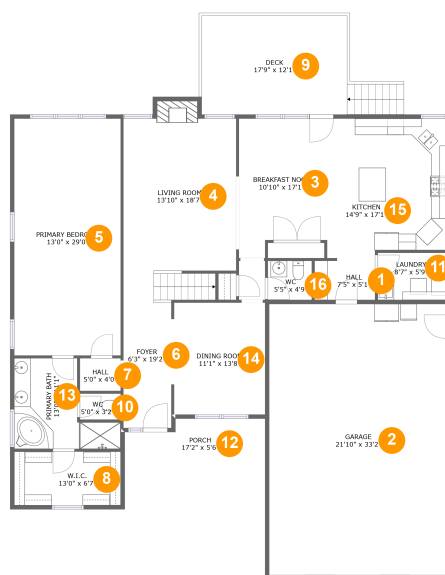


1 garages



3,662 Gross Living Area sqft

1050 Alice Springs Cir, Spring Hill, Tennessee, United States



Room Dimensions

Floor 1

Total sqft: 2936

Living area: 1862

#	Room name	Dimensions	Area (sqft)	Counted as Living Area
1	Hall	7'5" x 5'1"	37 sq. ft	Yes
2	Garage	21'10" x 33'2"	724 sq. ft	No
3	Breakfast Nook	10'10" x 17'1"	167 sq. ft	Yes
4	Living Room	13'10" x 18'7"	268 sq. ft	Yes
5	Primary Bedroom	13'0" x 29'0"	377 sq. ft	Yes
6	Foyer	6'3" x 19'2"	133 sq. ft	Yes
7	Hall	5'0" x 4'0"	20 sq. ft	Yes
8	W.i.c.	13'0" x 6'7"	85 sq. ft	Yes
9	Deck	17'9" x 12'1"	215 sq. ft	No
10	Wc	5'0" x 3'2"	16 sq. ft	Yes
11	Laundry	8'7" x 5'9"	49 sq. ft	Yes

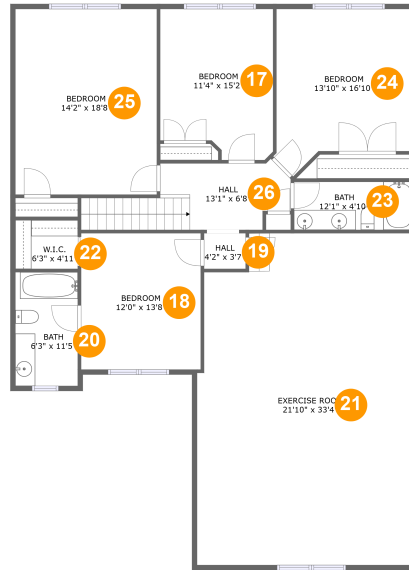
Scan captured on Tue, 30 Apr 2024 23:58:58 GMT

Information is calculated by CubiCasa technology; deemed highly reliable but not guaranteed.

1050 Alice Springs Cir, Spring Hill, Tennessee, United States

#	Room name	Dimensions	Area (sqft)	Counted as Living Area
12	Porch	17'2" x 5'6"	84 sq. ft	No
13	Primary Bath	13'0" x 11'1"	103 sq. ft	Yes
14	Dining Room	11'1" x 13'8"	152 sq. ft	Yes
15	Kitchen	14'9" x 17'1"	243 sq. ft	Yes
16	Wc	5'5" x 4'9"	26 sq. ft	Yes

1050 Alice Springs Cir, Spring Hill, Tennessee, United States



Room Dimensions

Floor 2

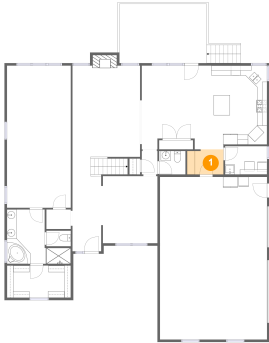
Total sqft: 1988

Living area: 1800

#	Room name	Dimensions	Area (sqft)	Counted as Living Area
17	Bedroom	11'4" x 15'2"	160 sq. ft	Yes
18	Bedroom	12'0" x 13'8"	164 sq. ft	Yes
19	Hall	4'2" x 3'7"	15 sq. ft	Yes
20	Bath	6'3" x 11'5"	72 sq. ft	Yes
21	Exercise Room	21'10" x 33'4"	541 sq. ft	Yes
22	W.i.c.	6'3" x 4'11"	31 sq. ft	Yes
23	Bath	12'1" x 4'10"	58 sq. ft	Yes
24	Bedroom	13'10" x 16'10"	204 sq. ft	Yes
25	Bedroom	14'2" x 18'8"	265 sq. ft	Yes
26	Hall	13'1" x 6'8"	107 sq. ft	Yes

1050 Alice Springs Cir, Spring Hill, Tennessee, United States

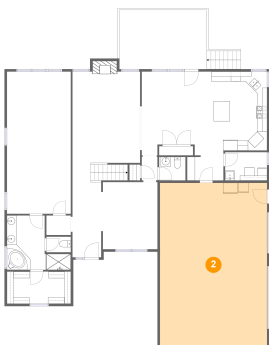
1 Floor 1 - Hall



Dimensions: 7'5" x 5'1"
Area: 37 sq. ft
Counted as Living Area:
Yes

Heated: Yes
Finished: Yes
Enclosed: Yes
Contiguous:
Yes
Permitted: Yes
Wet Space: No
Addition: No
Conversion: No

2 Floor 1 - Garage



Dimensions: 21'10" x 33'2"
Area: 724 sq. ft
Counted as Living Area: No

Heated: No
Finished: No
Enclosed: Yes
Contiguous: Yes
Permitted: Yes
Wet Space: No
Addition: No
Conversion: No

1050 Alice Springs Cir, Spring Hill, Tennessee, United States

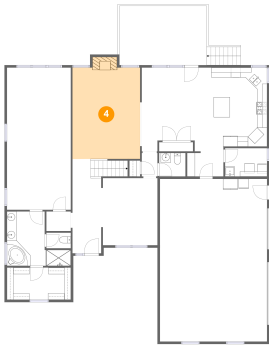
3 Floor 1 - Breakfast Nook



Dimensions: 10'10" x 17'1"
Area: 167 sq. ft
Counted as Living Area:
Yes

Heated: Yes
Finished: Yes
Enclosed: Yes
Contiguous:
Yes
Permitted: Yes
Wet Space: No
Addition: No
Conversion: No

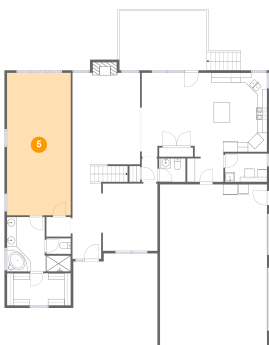
4 Floor 1 - Living Room



Dimensions: 13'10" x 18'7"
Area: 268 sq. ft
Counted as Living Area:
Yes

Heated: Yes
Finished: Yes
Enclosed: Yes
Contiguous:
Yes
Permitted: Yes
Wet Space: No
Addition: No
Conversion: No

5 Floor 1 - Primary Bedroom

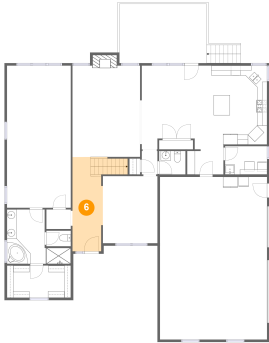


Dimensions: 13'0" x 29'0"
Area: 377 sq. ft
Counted as Living Area:
Yes

Heated: Yes
Finished: Yes
Enclosed: Yes
Contiguous:
Yes
Permitted: Yes
Wet Space: No
Addition: No
Conversion: No

1050 Alice Springs Cir, Spring Hill, Tennessee, United States

6 Floor 1 - Foyer



Dimensions: 6'3" x 19'2"
Area: 133 sq. ft
Counted as Living Area:
Yes

Heated: Yes
Finished: Yes
Enclosed: Yes
Contiguous:
Yes
Permitted: Yes
Wet Space: No
Addition: No
Conversion: No

7 Floor 1 - Hall



Dimensions: 5'0" x 4'0"
Area: 20 sq. ft
Counted as Living Area:
Yes

Heated: Yes
Finished: Yes
Enclosed: Yes
Contiguous:
Yes
Permitted: Yes
Wet Space: No
Addition: No
Conversion: No

8 Floor 1 - W.i.c.



Dimensions: 13'0" x 6'7"
Area: 85 sq. ft
Counted as Living Area:
Yes

Heated: Yes
Finished: Yes
Enclosed: Yes
Contiguous:
Yes
Permitted: Yes
Wet Space: No
Addition: No
Conversion: No

1050 Alice Springs Cir, Spring Hill, Tennessee, United States

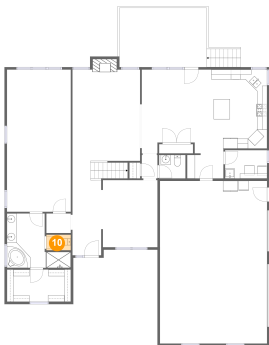
9 Floor 1 - Deck



Dimensions: 17'9" x 12'1"
Area: 215 sq. ft
Counted as Living Area: No

Heated: No
Finished: Yes
Enclosed: No
Contiguous: Yes
Permitted: Yes
Wet Space: No
Addition: No
Conversion: No

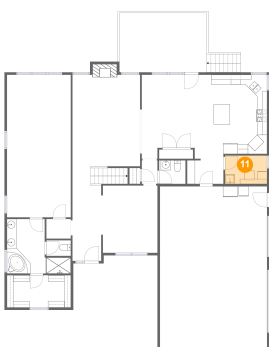
10 Floor 1 - Wc



Dimensions: 5'0" x 3'2"
Area: 16 sq. ft
Counted as Living Area: Yes

Heated: Yes
Finished: Yes
Enclosed: Yes
Contiguous: Yes
Permitted: Yes
Wet Space: Yes
Addition: No
Conversion: No

11 Floor 1 - Laundry

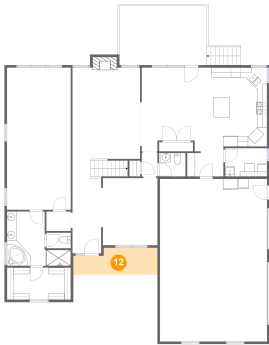


Dimensions: 8'7" x 5'9"
Area: 49 sq. ft
Counted as Living Area: Yes

Heated: Yes
Finished: Yes
Enclosed: Yes
Contiguous: Yes
Permitted: Yes
Wet Space: No
Addition: No
Conversion: No

1050 Alice Springs Cir, Spring Hill, Tennessee, United States

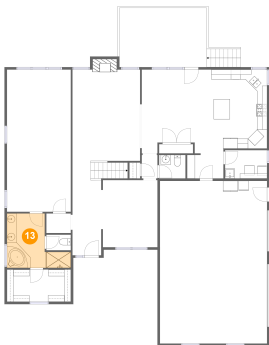
12 Floor 1 - Porch



Dimensions: 17'2" x 5'6"
Area: 84 sq. ft
Counted as Living Area: No

Heated: No
Finished: Yes
Enclosed: No
Contiguous: Yes
Permitted: Yes
Wet Space: No
Addition: No
Conversion: No

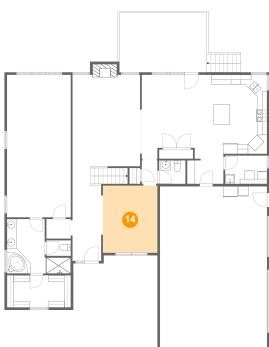
13 Floor 1 - Primary Bath



Dimensions: 13'0" x 11'1"
Area: 103 sq. ft
Counted as Living Area: Yes

Heated: Yes
Finished: Yes
Enclosed: Yes
Contiguous: Yes
Permitted: Yes
Wet Space: Yes
Addition: No
Conversion: No

14 Floor 1 - Dining Room

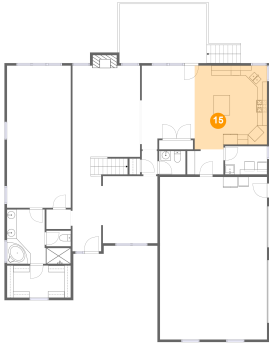


Dimensions: 11'1" x 13'8"
Area: 152 sq. ft
Counted as Living Area: Yes

Heated: Yes
Finished: Yes
Enclosed: Yes
Contiguous: Yes
Permitted: Yes
Wet Space: No
Addition: No
Conversion: No

1050 Alice Springs Cir, Spring Hill, Tennessee, United States

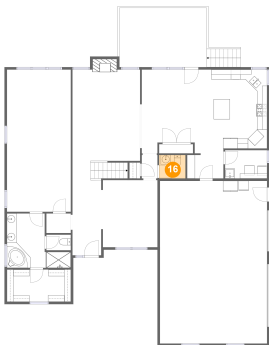
15 Floor 1 - Kitchen



Dimensions: 14'9" x 17'1"
Area: 243 sq. ft
Counted as Living Area:
Yes

Heated: Yes
Finished: Yes
Enclosed: Yes
Contiguous:
Yes
Permitted: Yes
Wet Space: No
Addition: No
Conversion: No

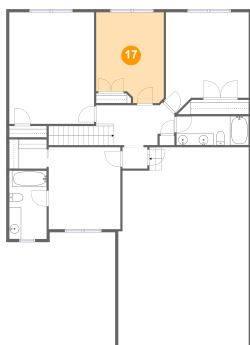
16 Floor 1 - Wc



Dimensions: 5'5" x 4'9"
Area: 26 sq. ft
Counted as Living Area:
Yes

Heated: Yes
Finished: Yes
Enclosed: Yes
Contiguous:
Yes
Permitted: Yes
Wet Space: Yes
Addition: No
Conversion: No

17 Floor 2 - Bedroom

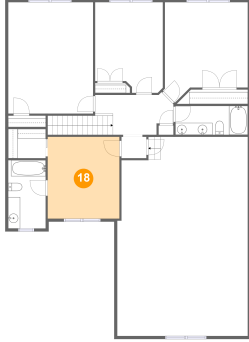


Dimensions: 11'4" x 15'2"
Area: 160 sq. ft
Counted as Living Area:
Yes

Heated: Yes
Finished: Yes
Enclosed: Yes
Contiguous:
Yes
Permitted: Yes
Wet Space: No
Addition: No
Conversion: No

1050 Alice Springs Cir, Spring Hill, Tennessee, United States

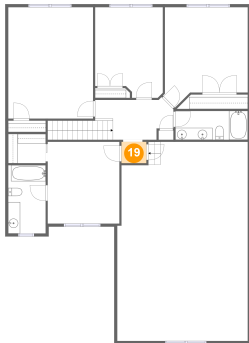
18 Floor 2 - Bedroom



Dimensions: 12'0" x 13'8"
Area: 164 sq. ft
Counted as Living Area:
Yes

Heated: Yes
Finished: Yes
Enclosed: Yes
Contiguous:
Yes
Permitted: Yes
Wet Space: No
Addition: No
Conversion: No

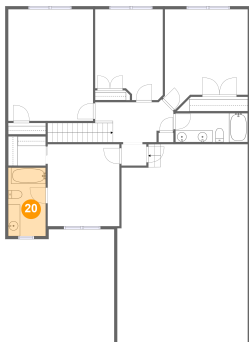
19 Floor 2 - Hall



Dimensions: 4'2" x 3'7"
Area: 15 sq. ft
Counted as Living Area:
Yes

Heated: Yes
Finished: Yes
Enclosed: Yes
Contiguous:
Yes
Permitted: Yes
Wet Space: No
Addition: No
Conversion: No

20 Floor 2 - Bath

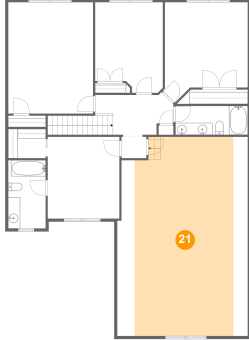


Dimensions: 6'3" x 11'5"
Area: 72 sq. ft
Counted as Living Area:
Yes

Heated: Yes
Finished: Yes
Enclosed: Yes
Contiguous:
Yes
Permitted: Yes
Wet Space: Yes
Addition: No
Conversion: No

1050 Alice Springs Cir, Spring Hill, Tennessee, United States

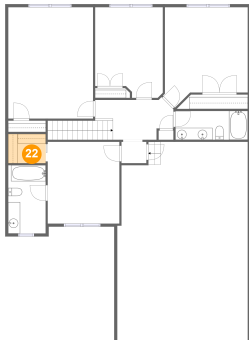
21 Floor 2 - Exercise Room



Dimensions: 21'10" x 33'4"
Area: 541 sq. ft
Counted as Living Area:
Yes

Heated: Yes
Finished: Yes
Enclosed: Yes
Contiguous:
Yes
Permitted: Yes
Wet Space: No
Addition: No
Conversion: No

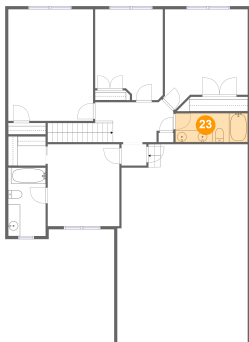
22 Floor 2 - W.i.c.



Dimensions: 6'3" x 4'11"
Area: 31 sq. ft
Counted as Living Area:
Yes

Heated: Yes
Finished: Yes
Enclosed: Yes
Contiguous:
Yes
Permitted: Yes
Wet Space: No
Addition: No
Conversion: No

23 Floor 2 - Bath

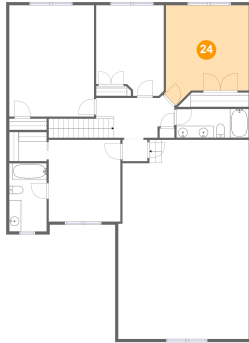


Dimensions: 12'1" x 4'10"
Area: 58 sq. ft
Counted as Living Area:
Yes

Heated: Yes
Finished: Yes
Enclosed: Yes
Contiguous:
Yes
Permitted: Yes
Wet Space: Yes
Addition: No
Conversion: No

1050 Alice Springs Cir, Spring Hill, Tennessee, United States

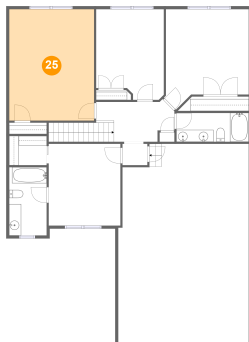
24 Floor 2 - Bedroom



Dimensions: 13'10" x 16'10"
Area: 204 sq. ft
Counted as Living Area:
Yes

Heated: Yes
Finished: Yes
Enclosed: Yes
Contiguous:
Yes
Permitted: Yes
Wet Space: No
Addition: No
Conversion: No

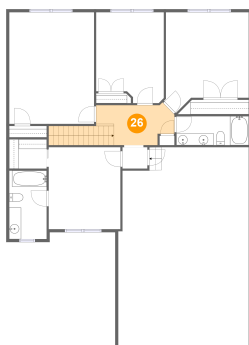
25 Floor 2 - Bedroom



Dimensions: 14'2" x 18'8"
Area: 265 sq. ft
Counted as Living Area:
Yes

Heated: Yes
Finished: Yes
Enclosed: Yes
Contiguous:
Yes
Permitted: Yes
Wet Space: No
Addition: No
Conversion: No

26 Floor 2 - Hall



Dimensions: 13'1" x 6'8"
Area: 107 sq. ft
Counted as Living Area:
Yes

Heated: Yes
Finished: Yes
Enclosed: Yes
Contiguous:
Yes
Permitted: Yes
Wet Space: No
Addition: No
Conversion: No