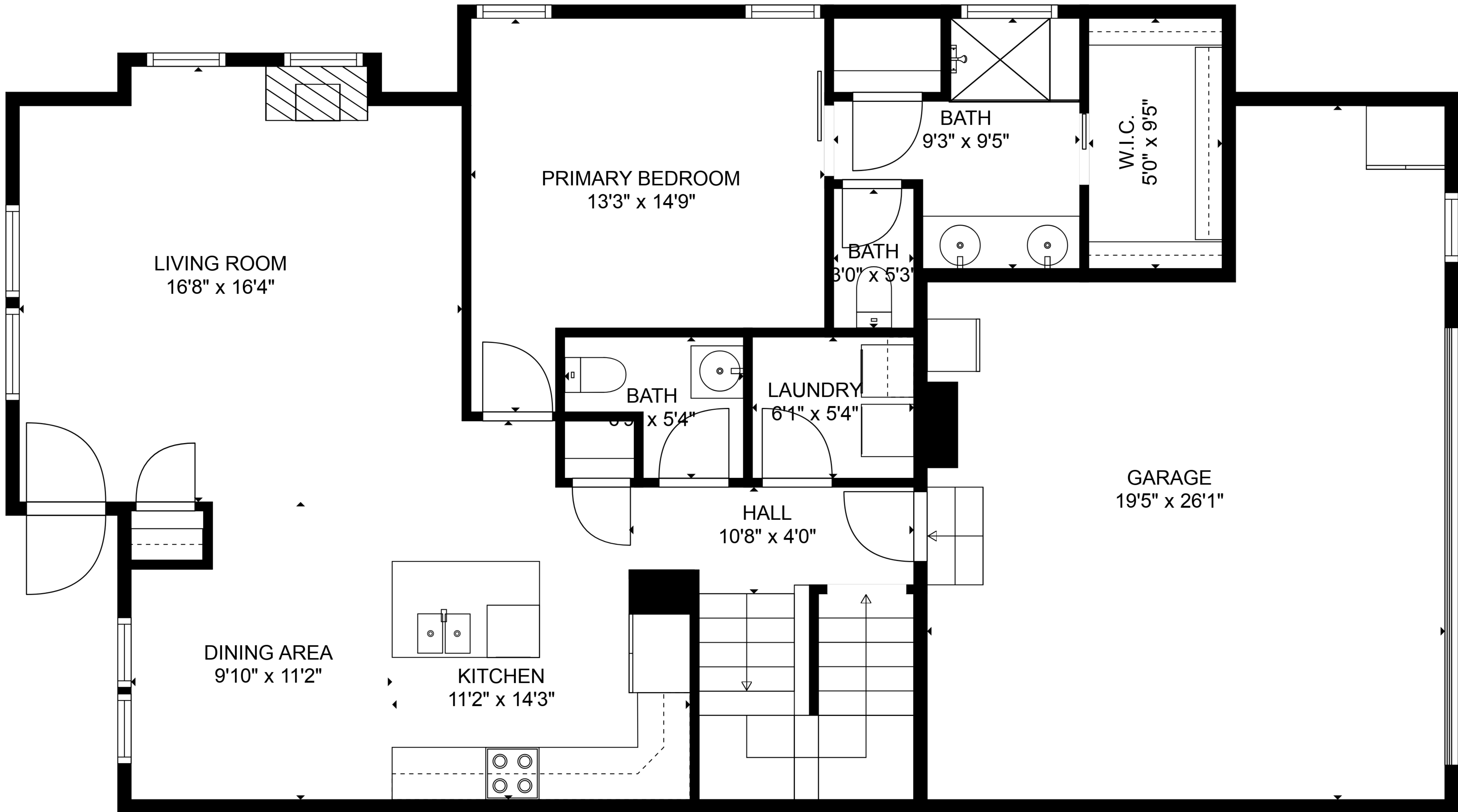


BASEMENT
45'2" x 29'4"

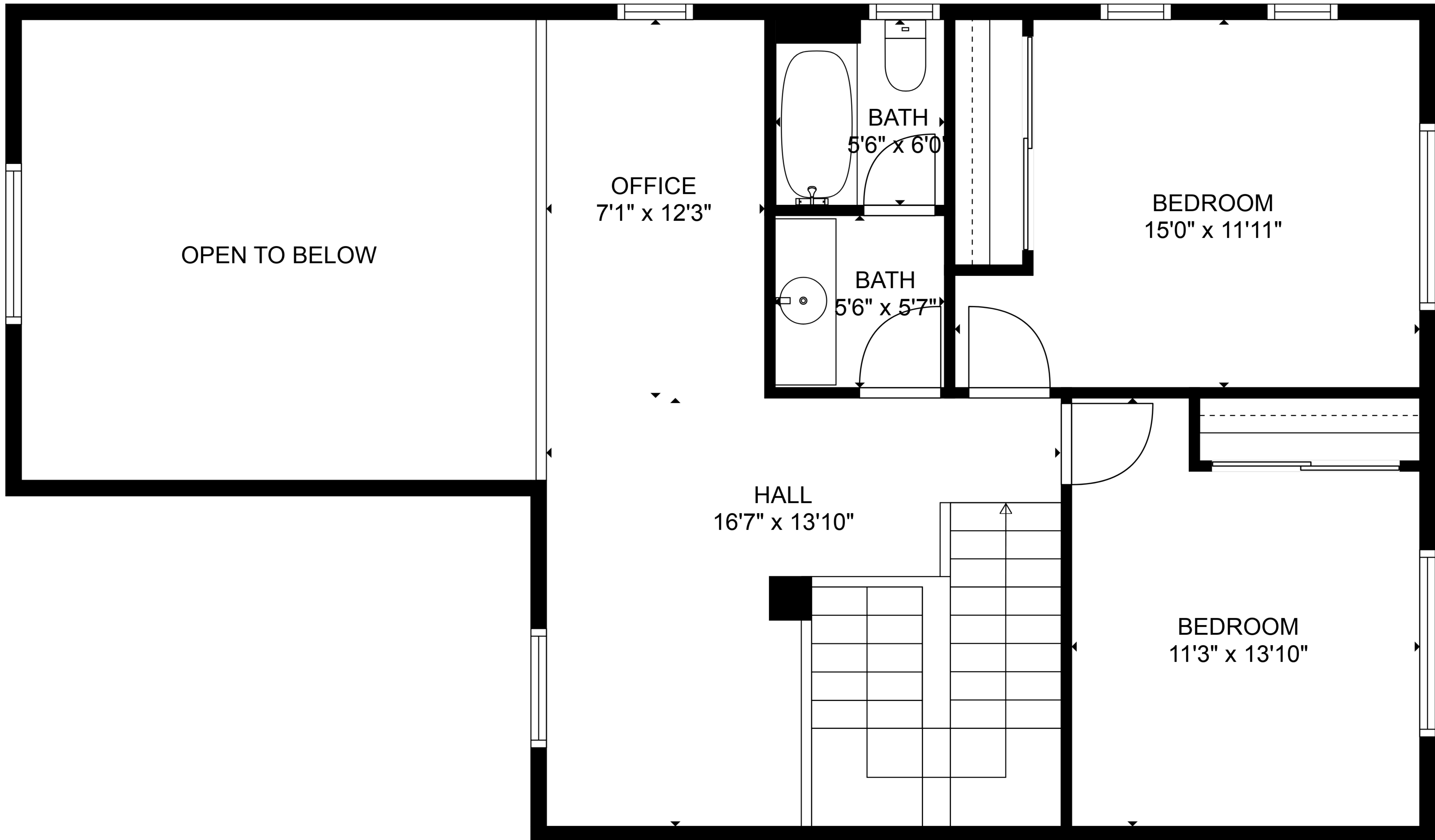
TOTAL: 1749 sq. ft
BELOW GROUND: 0 sq. ft, FLOOR 2: 1007 sq. ft, FLOOR 3: 742 sq. ft
EXCLUDED AREAS: BASEMENT: 993 sq. ft, GARAGE: 430 sq. ft, OPEN TO BELOW: 248 sq. ft

SIZES AND DIMENSIONS ARE APPROXIMATE, ACTUAL MAY VARY.



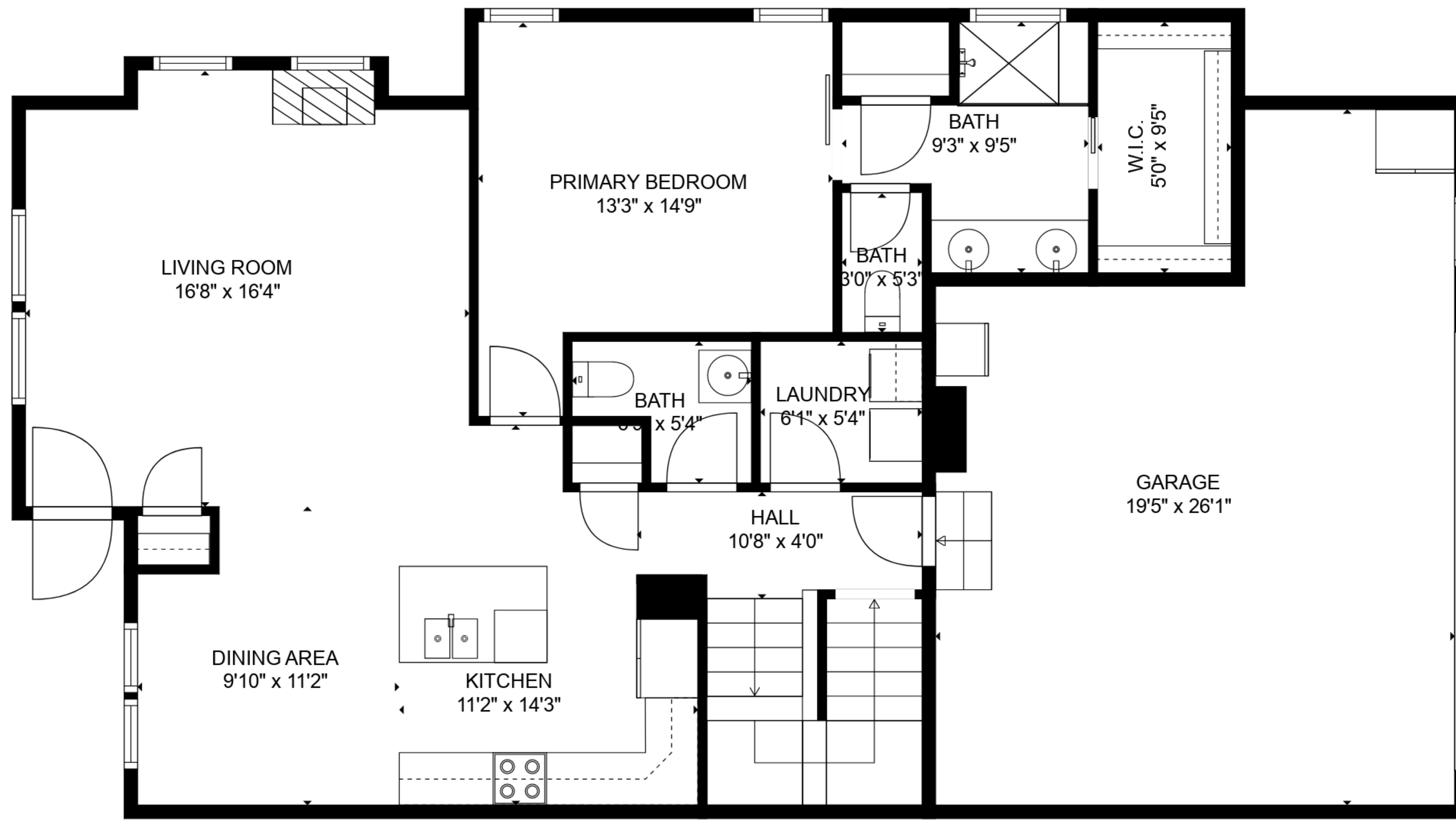
TOTAL: 1749 sq. ft
 BELOW GROUND: 0 sq. ft, FLOOR 2: 1007 sq. ft, FLOOR 3: 742 sq. ft
 EXCLUDED AREAS: BASEMENT: 993 sq. ft, GARAGE: 430 sq. ft, OPEN TO BELOW: 248 sq. ft

SIZES AND DIMENSIONS ARE APPROXIMATE, ACTUAL MAY VARY.

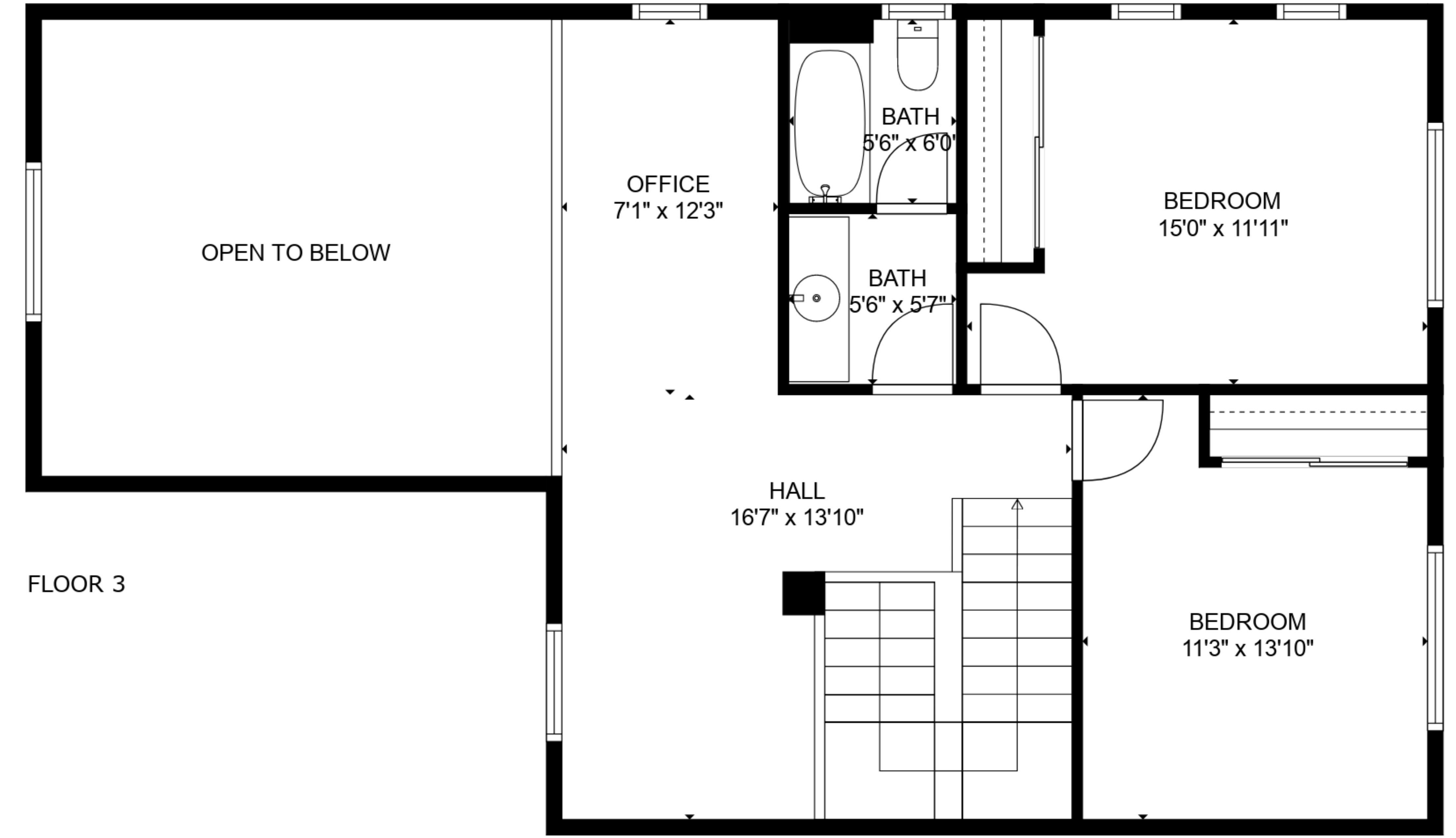


TOTAL: 1749 sq. ft
 BELOW GROUND: 0 sq. ft, FLOOR 2: 1007 sq. ft, FLOOR 3: 742 sq. ft
 EXCLUDED AREAS: BASEMENT: 993 sq. ft, GARAGE: 430 sq. ft, OPEN TO BELOW: 248 sq. ft

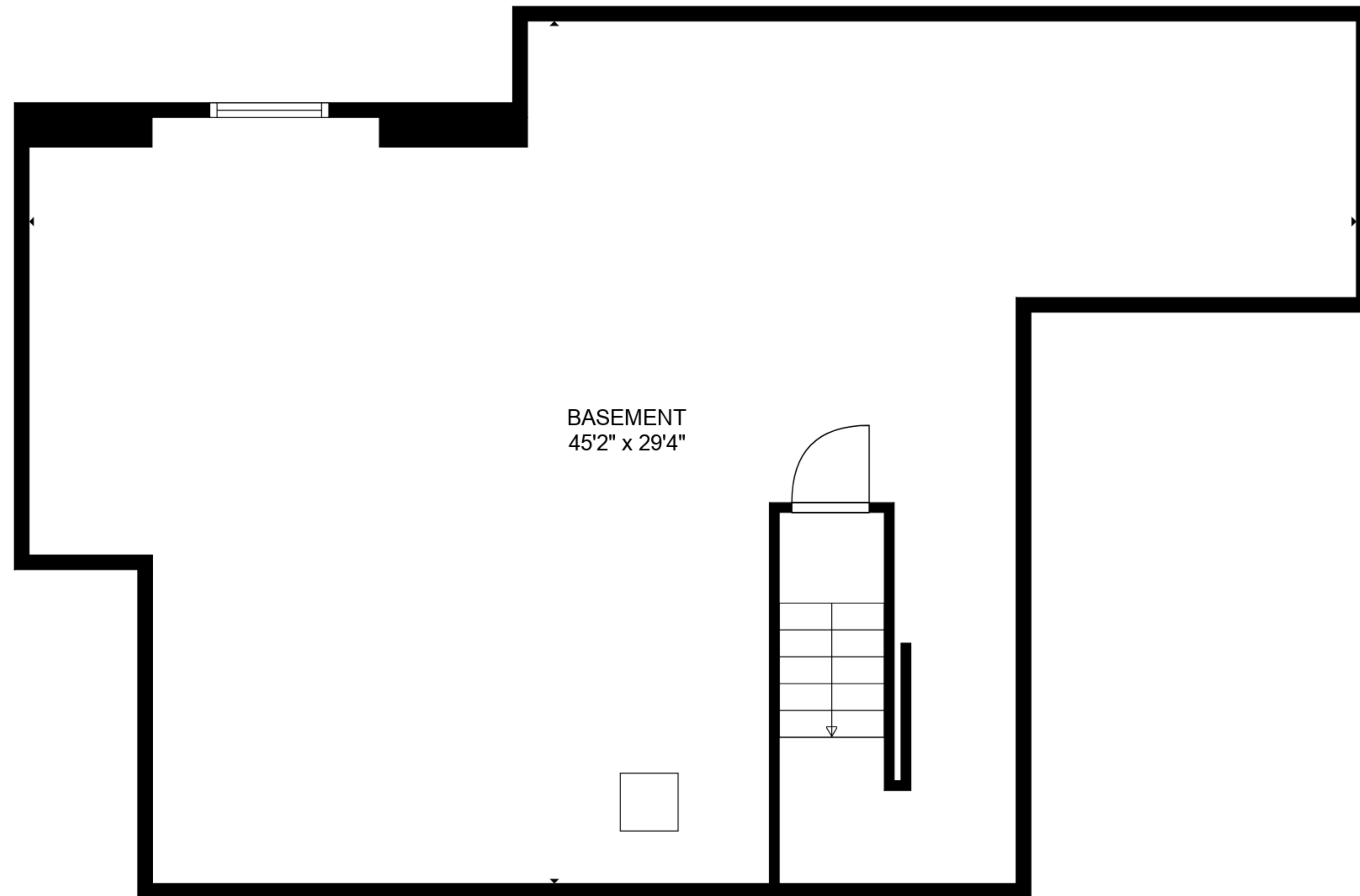
SIZES AND DIMENSIONS ARE APPROXIMATE, ACTUAL MAY VARY.



FLOOR 2



FLOOR 3



FLOOR 1

TOTAL: 1749 sq. ft
 BELOW GROUND: 0 sq. ft, FLOOR 2: 1007 sq. ft, FLOOR 3: 742 sq. ft
 EXCLUDED AREAS: BASEMENT: 993 sq. ft, GARAGE: 430 sq. ft, OPEN TO BELOW: 248 sq. ft

SIZES AND DIMENSIONS ARE APPROXIMATE, ACTUAL MAY VARY.