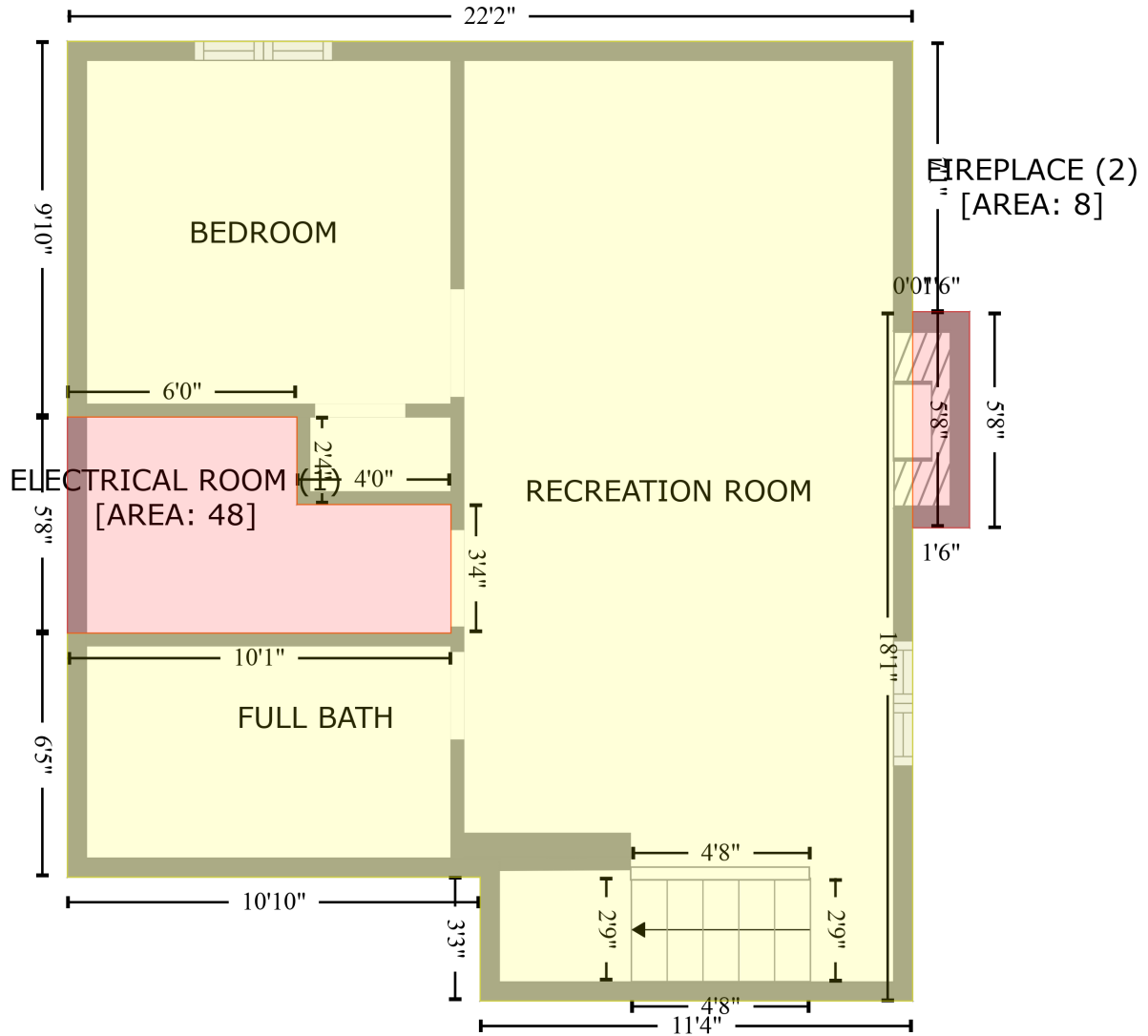


135 Mill Street North, Downtown Brampton, Brampton, Peel County, Ontario, Canada, L6X 2P1

Gross Living Area: 1991 sq. ft

Level 1 - Below Grade

FLOOR 1
[AREA: 475]



Space	Area (sq. ft)	Calculation
FLOOR 1 (Living area)	475	Coordinate Polygon Area Algorithm using inches $-((395.5 + 395.5) * (-70.1 - 15) + (395.5 + 395.6) * (15 - 15) + (395.6 + 395.6) * (15 - 232) + (395.6 + 259.6) * (232 - 232) + (259.6 + 259.6) * (232 - 193) + (259.6 + 129.8) * (193 - 193) + (129.8 + 129.8) * (193 - 116.2) + (129.8 + 250.4) * (116.2 - 116.2) + (250.4 + 250.4) * (116.2 - 75.7) + (250.4 + 202) * (75.7 - 75.7) + (202 + 202) * (75.7 - 48.1) + (202 + 129.8) * (48.1 - 48.1) + (129.8 + 129.8) * (48.1 - -70.1) + (129.8 + 395.5) * (-70.1 - -70.1)) * 0.5 * 0.00694$

135 Mill Street North, Downtown Brampton, Brampton, Peel County, Ontario, Canada, L6X 2P1

Gross Living Area: 1991 sq. ft

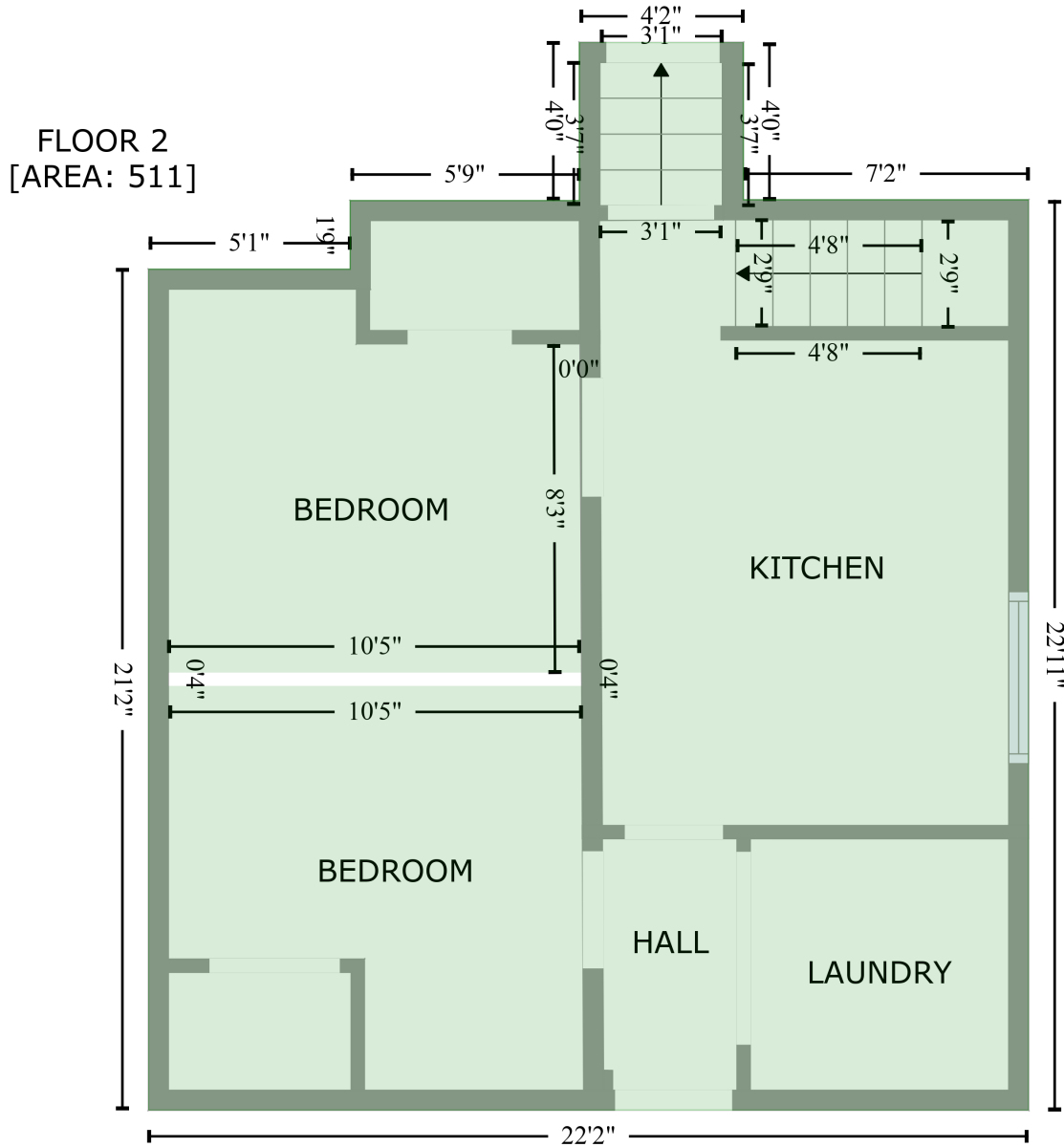
Level 1 - Below Grade

Space	Area (sq. ft)	Calculation <small>Coordinate Polygon Area Algorithm using inches</small>
ELECTRICAL ROOM (Non-living area)	48	$-\left((202 + 202) * (48.1 - 75.7) + (202 + 250.4) * (75.7 - 75.7) + (250.4 + 250.4) * (75.7 - 116.2) + (250.4 + 129.8) * (116.2 - 116.2) + (129.8 + 129.8) * (116.2 - 48.1) + (129.8 + 202) * (48.1 - 48.1)\right) * 0.5 * 0.00694$
FIREPLACE (Non-living area)	8	$-\left((413.4 + 413.4) * (15 - 83) + (413.4 + 395.6) * (83 - 83) + (395.6 + 395.6) * (83 - 15) + (395.6 + 413.4) * (15 - 15)\right) * 0.5 * 0.00694$

135 Mill Street North, Downtown Brampton, Brampton, Peel County, Ontario, Canada, L6X 2P1

Gross Living Area: 1991 sq. ft

Level 2



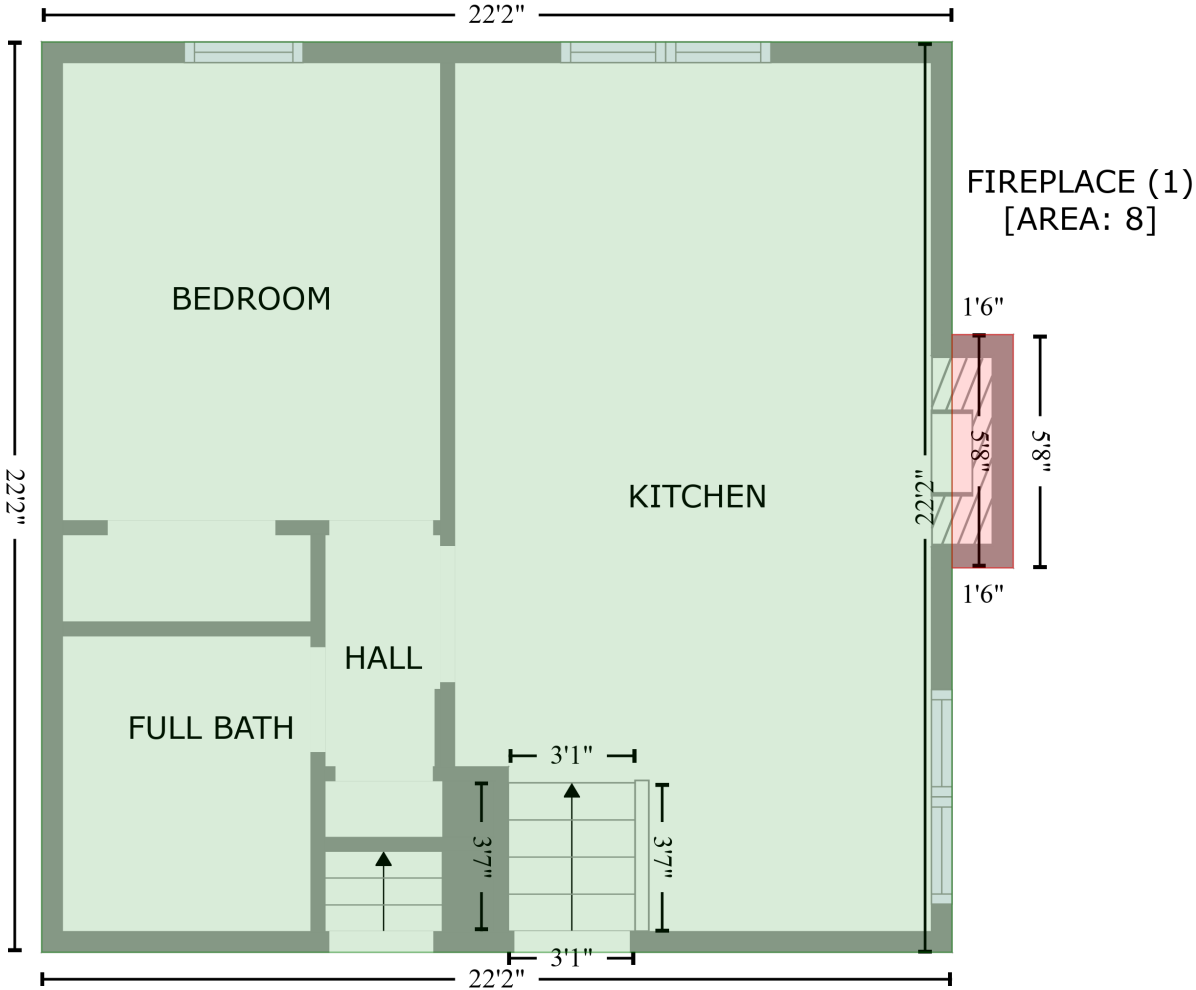
Space	Area (sq. ft)	Calculation
FLOOR 2 (Living area)	511	Coordinate Polygon Area Algorithm using inches $-((312.2 + 312.2) * (143.7 - 191.3) + (312.2 + 398.4) * (191.3 - 191.3) + (398.4 + 398.4) * (191.3 - 466.2) + (398.4 + 132.6) * (466.2 - 466.2) + (132.6 + 132.6) * (466.2 - 212.2) + (132.6 + 193.5) * (212.2 - 212.2) + (193.5 + 193.5) * (212.2 - 191.5) + (193.5 + 262.7) * (191.5 - 191.5) + (262.7 + 262.7) * (191.5 - 143.7) + (262.7 + 312.2) * (143.7 - 143.7)) * 0.5 + 0.00694 - ((263 + 262.8) * (234.8 - 234.8) + (262.8 + 263.2) * (234.8 - 334) + (263.2 + 138.6) * (334 - 334) + (138.6 + 138.6) * (334 - 338) + (138.6 + 263.4) * (338 - 338) + (263.4 + 263.4) * (338 - 334) + (263.4 + 263) * (334 - 234.8)) * 0.5 + 0.00694$

135 Mill Street North, Downtown Brampton, Brampton, Peel County, Ontario, Canada, L6X 2P1

Gross Living Area: 1991 sq. ft

Level 3

FLOOR 3
[AREA: 490]



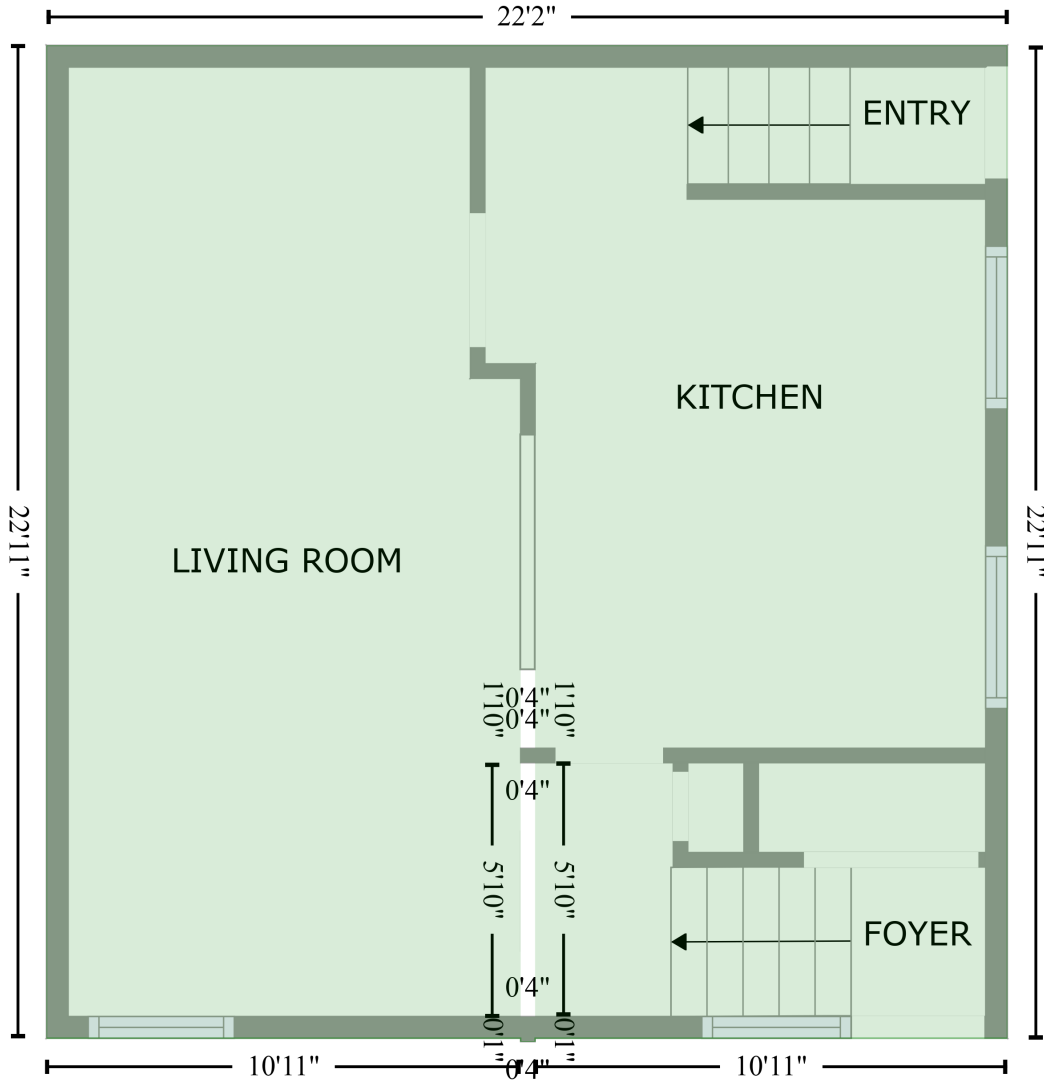
Space	Area (sq. ft)	Calculation <small>Coordinate Polygon Area Algorithm using inches</small>
FLOOR 3 (Living area)	490	$-((397.8 + 397.8) * (-71.6 - 194.1) + (397.8 + 132) * (194.1 - 194.1) + (132 + 132) * (194.1 - -71.6) + (132 + 397.8) * (-71.6 - -71.6)) * 0.5 * 0.00694$
FIREPLACE (Non-living area)	8	$-((415.6 + 415.6) * (13.8 - 81.9) + (415.6 + 397.8) * (81.9 - 81.9) + (397.8 + 397.8) * (81.9 - 13.8) + (397.8 + 415.6) * (13.8 - 13.8)) * 0.5 * 0.00694$

135 Mill Street North, Downtown Brampton, Brampton, Peel County, Ontario, Canada, L6X 2P1

Gross Living Area: 1991 sq. ft

Level 4

FLOOR 4
[AREA: 504]



Space	Area (sq. ft)	Calculation <small>Coordinate Polygon Area Algorithm using inches</small>
FLOOR 4 (Living area)	504	$ \begin{aligned} & -((397.8 + 397.8) * (185.9 - 460.6) + (397.8 + 267.1) * (460.6 - 460.6) + (267.1 + 267.1) * (460.6 - \\ & 461.6) + (267.1 + 263.1) * (461.6 - 461.6) + (263.1 + 263.1) * (461.6 - 460.6) + (263.1 + 132) * \\ & (460.6 - 460.6) + (132 + 132) * (460.6 - 185.9) + (132 + 397.8) * (185.9 - 185.9)) * 0.5 * 0.00694 \\ & + -((267.1 + 263.1) * (384.4 - 384.4) + (263.1 + 263.1) * (384.4 - 454.6) + (263.1 + 267.1) * (454.6 \\ & - 454.6) + (267.1 + 267.1) * (454.6 - 384.4)) * 0.5 * 0.00694 + -((267.1 + 263.1) * (358.7 - 358.7) \\ & + (263.1 + 263.1) * (358.7 - 380.4) + (263.1 + 267.1) * (380.4 - 380.4) + (267.1 + 267.1) * (380.4 - \\ & 358.7)) * 0.5 * 0.00694 \end{aligned} $

135 Mill Street North, Downtown Brampton, Brampton, Peel County, Ontario, Canada, L6X 2P1

Gross Living Area: 1991 sq. ft

Level 5

FLOOR 5
[AREA: 486]



Space	Area (sq. ft)	Calculation <small>Coordinate Polygon Area Algorithm using inches</small>
FLOOR 5 (Living area)	486	$-((397.5 + 397.5) * (-70 - 193.5) + (397.5 + 131.7) * (193.5 - 193.5) + (131.7 + 131.7) * (193.5 - 70) + (131.7 + 397.5) * (-70 - -70)) * 0.5 * 0.00694$