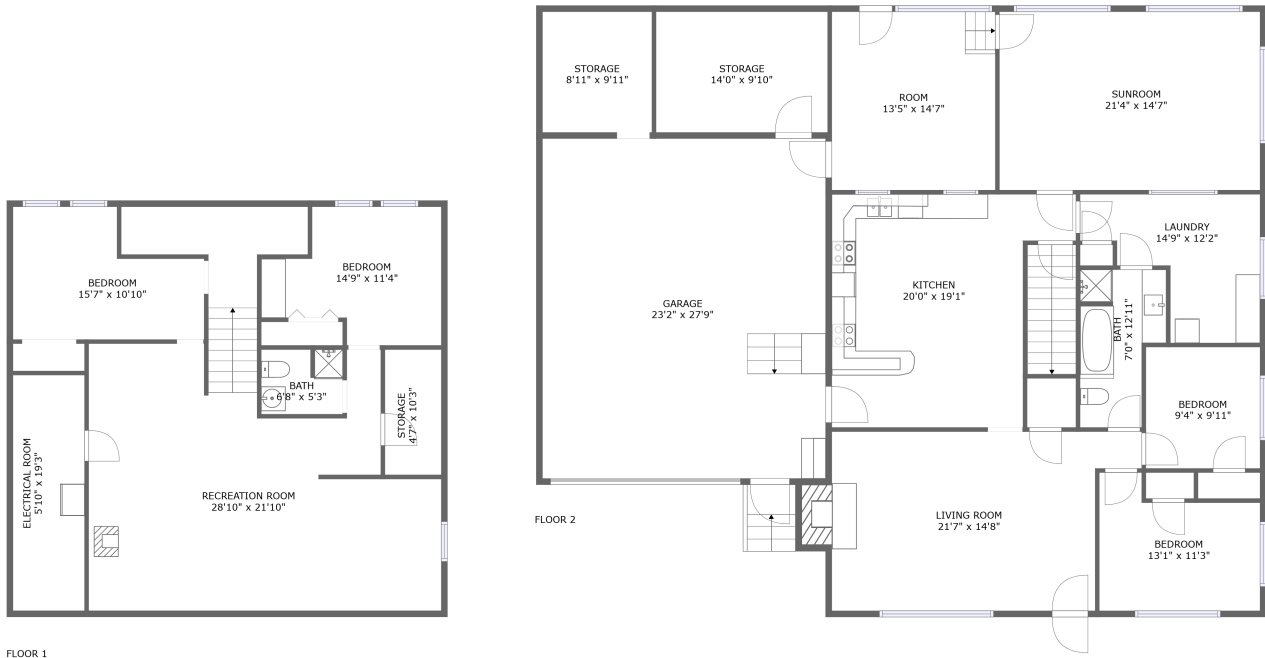



1313 Zener Street, Pocatello, Bannock County, Idaho, United States, 83201



Property summary

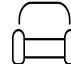
 **1** Garages

 **4** Bedrooms

 **2** Bathrooms

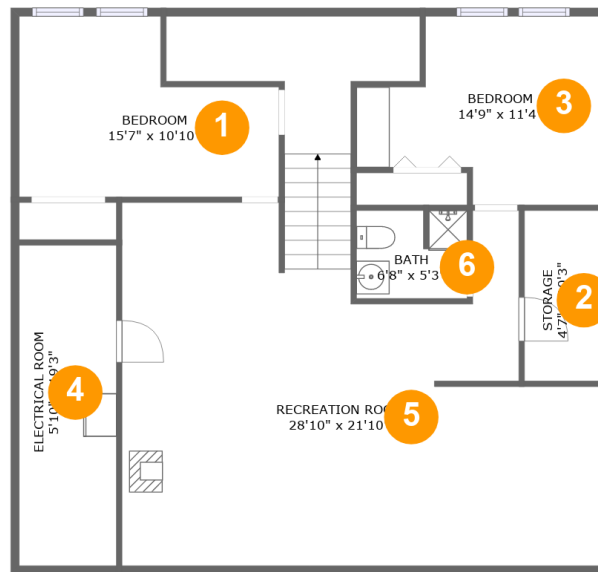
 **0** Half baths

 **2** Floors

 **2,641** Gross living area sqft

 **3,969** Total sqft

**1313 Zener Street, Pocatello, Bannock County, Idaho,
United States, 83201**



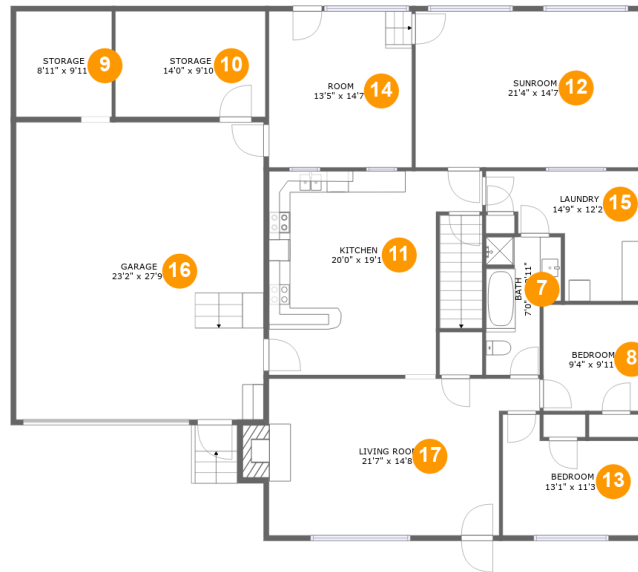
Room dimensions

Floor 1

Total sqft: 1227 Living area: 1049

#		Dimensions	sqft	Counted as living area
1	Bedroom	15'7" x 10'10"	140 sq. ft	Yes
2	Storage	4'7" x 10'3"	47 sq. ft	No
3	Bedroom	14'9" x 11'4"	134 sq. ft	Yes
4	Room	5'10" x 19'3"	113 sq. ft	No
5	Recreation Room	28'10" x 21'10"	615 sq. ft	Yes
6	Bath	6'8" x 5'3"	34 sq. ft	Yes

1313 Zener Street, Pocatello, Bannock County, Idaho, United States, 83201



Room dimensions

Floor 2

Total sqft: 2742 Living area: 1592

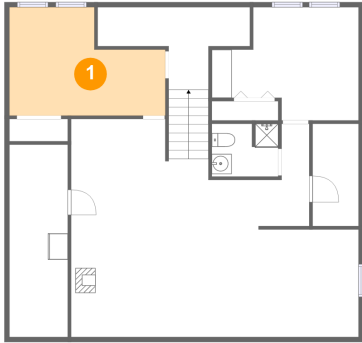
#		Dimensions	sqft	Counted as living area
7	Bath	7'0" x 12'11"	76 sq. ft	Yes
8	Bedroom	9'4" x 9'11"	93 sq. ft	Yes
9	Storage	8'11" x 9'11"	88 sq. ft	No
10	Storage	14'0" x 9'10"	139 sq. ft	No
11	Kitchen	20'0" x 19'1"	315 sq. ft	Yes
12	Room	21'4" x 14'7"	311 sq. ft	Yes
13	Bedroom	13'1" x 11'3"	125 sq. ft	Yes
14	Room	13'5" x 14'7"	195 sq. ft	No
15	Utility	14'9" x 12'2"	126 sq. ft	Yes
16	Garage	23'2" x 27'9"	644 sq. ft	No
17	Living Room	21'7" x 14'8"	340 sq. ft	Yes

Scan captured on Mon, 11 Nov 2024 21:20:20 GMT

Information is calculated by Cubicasa technology deemed highly reliable but not guaranteed.

**1313 Zener Street, Pocatello, Bannock County, Idaho,
United States, 83201**

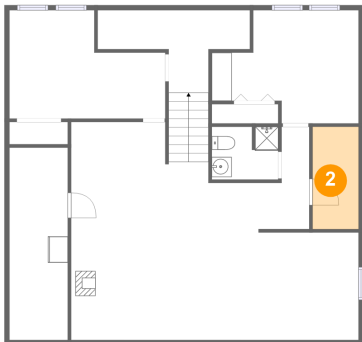
1 Floor 1 - Bedroom



Dimensions: 15'7" x 10'10"
Area: 140 sq. ft
Counted as living area: Yes

Heated: Yes
Finished: Yes
Enclosed: Yes
Contiguous: Yes
Permitted: Yes
Wet space: No
Addition: No
Conversion: No

2 Floor 1 - Storage

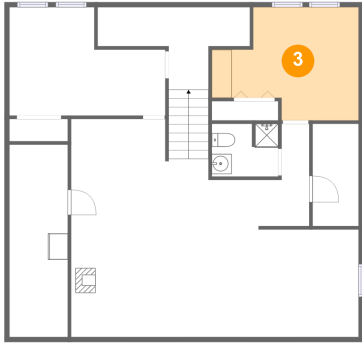


Dimensions: 4'7" x 10'3"
Area: 47 sq. ft
Counted as living area: No

Heated: No
Finished: No
Enclosed: No
Contiguous: Yes
Permitted: Yes
Wet space: No
Addition: No
Conversion: No

1313 Zener Street, Pocatello, Bannock County, Idaho,
United States, 83201

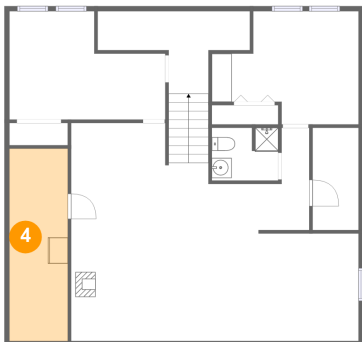
3 Floor 1 - Bedroom



Dimensions: 14'9" x 11'4"
Area: 134 sq. ft
Counted as living area: Yes

Heated: Yes
Finished: Yes
Enclosed: Yes
Contiguous: Yes
Permitted: Yes
Wet space: No
Addition: No
Conversion: No

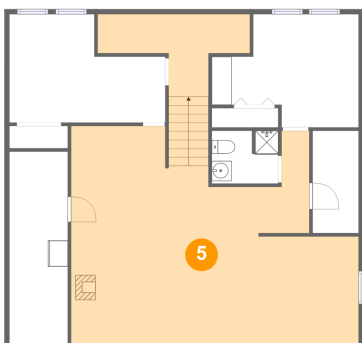
4 Floor 1 - Room



Dimensions: 5'10" x 19'3"
Area: 113 sq. ft
Counted as living area: No

Heated: No
Finished: No
Enclosed: Yes
Contiguous: Yes
Permitted: Yes
Wet space: No
Addition: No
Conversion: No

5 Floor 1 - Recreation Room

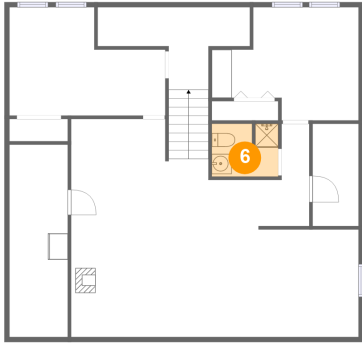


Dimensions: 28'10" x 21'10"
Area: 615 sq. ft
Counted as living area: Yes

Heated: Yes
Finished: Yes
Enclosed: Yes
Contiguous: Yes
Permitted: Yes
Wet space: No
Addition: No
Conversion: No

1313 Zener Street, Pocatello, Bannock County, Idaho,
United States, 83201

6 Floor 1 - Bath



Dimensions: 6'8" x 5'3"
Area: 34 sq. ft
Counted as living area: Yes

Heated: Yes
Finished: Yes
Enclosed: Yes
Contiguous: Yes
Permitted: Yes
Wet space: Yes
Addition: No
Conversion: No

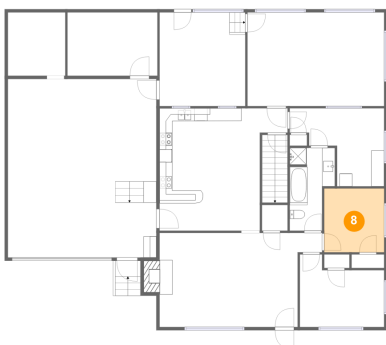
7 Floor 2 - Bath



Dimensions: 7'0" x 12'11"
Area: 76 sq. ft
Counted as living area: Yes

Heated: Yes
Finished: Yes
Enclosed: Yes
Contiguous: Yes
Permitted: Yes
Wet space: Yes
Addition: No
Conversion: No

8 Floor 2 - Bedroom

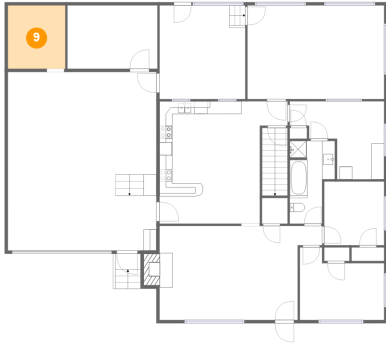


Dimensions: 9'4" x 9'11"
Area: 93 sq. ft
Counted as living area: Yes

Heated: Yes
Finished: Yes
Enclosed: Yes
Contiguous: Yes
Permitted: Yes
Wet space: No
Addition: No
Conversion: No

1313 Zener Street, Pocatello, Bannock County, Idaho,
United States, 83201

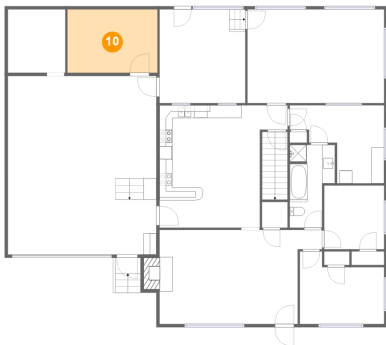
9 Floor 2 - Storage



Dimensions: 8'11" x 9'11"
Area: 88 sq. ft
Counted as living area: No

Heated: Yes
Finished: Yes
Enclosed: No
Contiguous: Yes
Permitted: Yes
Wet space: No
Addition: No
Conversion: No

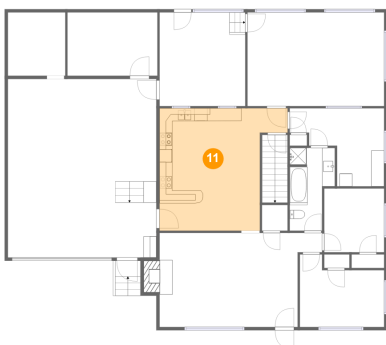
10 Floor 2 - Storage



Dimensions: 14'0" x 9'10"
Area: 139 sq. ft
Counted as living area: No

Heated: Yes
Finished: Yes
Enclosed: No
Contiguous: Yes
Permitted: Yes
Wet space: No
Addition: No
Conversion: No

11 Floor 2 - Kitchen

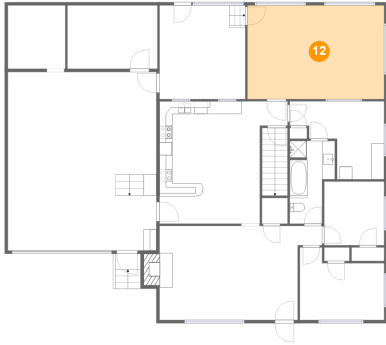


Dimensions: 20'0" x 19'1"
Area: 315 sq. ft
Counted as living area: Yes

Heated: Yes
Finished: Yes
Enclosed: Yes
Contiguous: Yes
Permitted: Yes
Wet space: No
Addition: No
Conversion: No

**1313 Zener Street, Pocatello, Bannock County, Idaho,
United States, 83201**

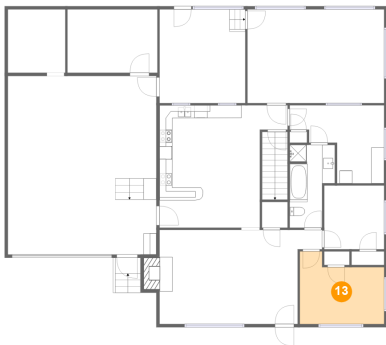
12 Floor 2 - Room



Dimensions: 21'4" x 14'7"
Area: 311 sq. ft
Counted as living area: Yes

Heated: Yes
Finished: Yes
Enclosed: Yes
Contiguous: Yes
Permitted: Yes
Wet space: No
Addition: No
Conversion: No

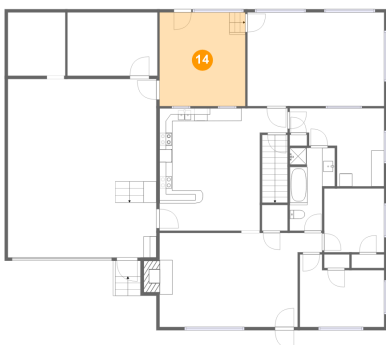
13 Floor 2 - Bedroom



Dimensions: 13'1" x 11'3"
Area: 125 sq. ft
Counted as living area: Yes

Heated: Yes
Finished: Yes
Enclosed: Yes
Contiguous: Yes
Permitted: Yes
Wet space: No
Addition: No
Conversion: No

14 Floor 2 - Room

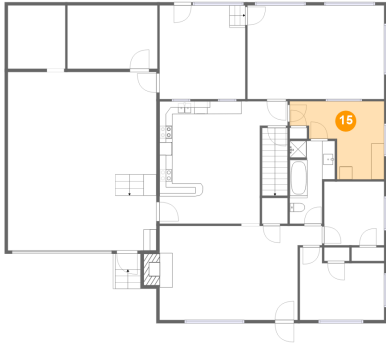


Dimensions: 13'5" x 14'7"
Area: 195 sq. ft
Counted as living area: No

Heated: Yes
Finished: No
Enclosed: Yes
Contiguous: Yes
Permitted: Yes
Wet space: No
Addition: No
Conversion: No

1313 Zener Street, Pocatello, Bannock County, Idaho,
United States, 83201

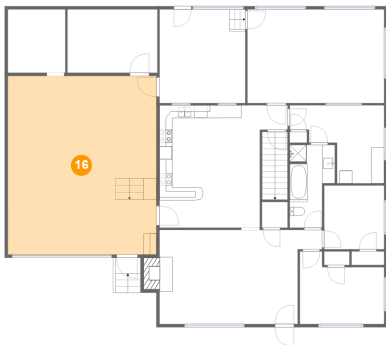
15 Floor 2 - Utility



Dimensions: 14'9" x 12'2"
Area: 126 sq. ft
Counted as living area: Yes

Heated: Yes
Finished: Yes
Enclosed: Yes
Contiguous: Yes
Permitted: Yes
Wet space: No
Addition: No
Conversion: No

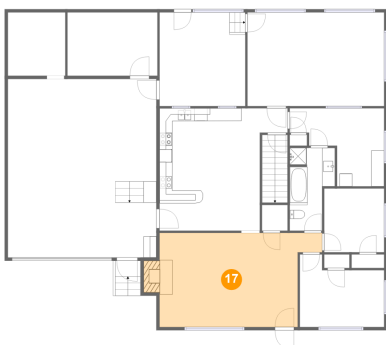
16 Floor 2 - Garage



Dimensions: 23'2" x 27'9"
Area: 644 sq. ft
Counted as living area: No

Heated: No
Finished: No
Enclosed: Yes
Contiguous: Yes
Permitted: Yes
Wet space: No
Addition: No
Conversion: No

17 Floor 2 - Living Room



Dimensions: 21'7" x 14'8"
Area: 340 sq. ft
Counted as living area: Yes

Heated: Yes
Finished: Yes
Enclosed: Yes
Contiguous: Yes
Permitted: Yes
Wet space: No
Addition: No
Conversion: No