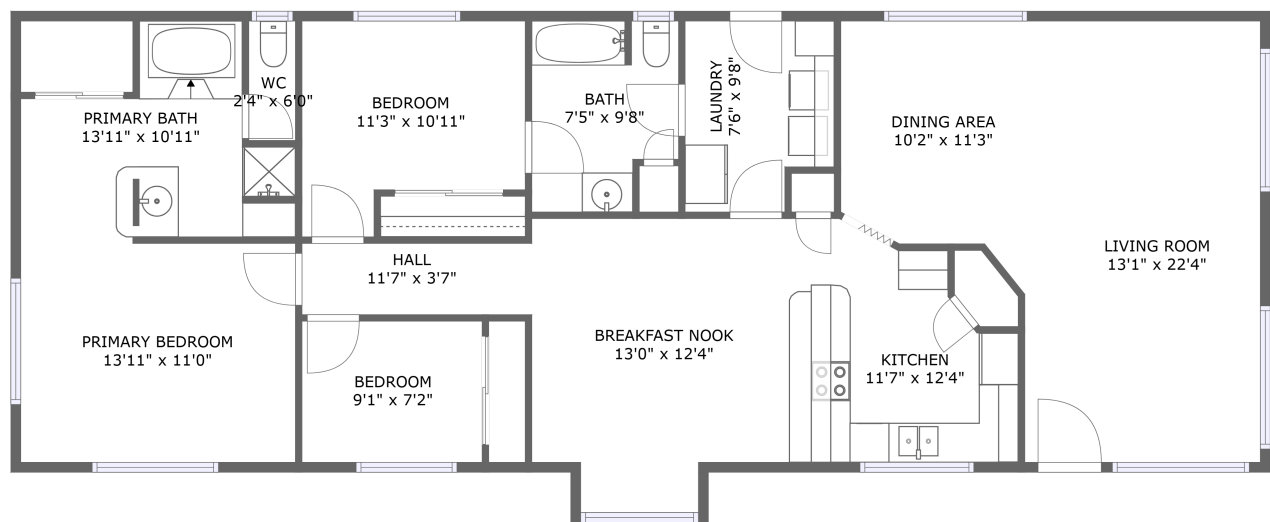




Home report


2035 Nocturne Court Southeast, Salem, Oregon 97306, United States





Property summary


 **0** Garages


 **3** Bedrooms

 **2** Bathrooms

 **0** Half baths

 **1** Floors

 **1,485** Gross living area sqft

 **1,503** Total sqft

Home report

2035 Nocturne Court Southeast, Salem, Oregon 97306, United States



Room dimensions

Floor 1 Total sqft: 1503    Living area: 1485

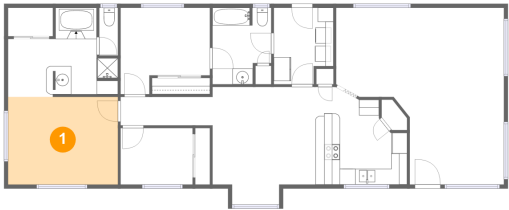
#		Max Dimensions	sqft	Included
1	Primary Bedroom	13'11" x 11'0"	154 sq. ft	Yes
2	Bedroom	9'1" x 7'2"	65 sq. ft	Yes
3	Breakfast Nook	13'0" x 12'4"	161 sq. ft	Yes
4	Laundry	7'6" x 9'8"	67 sq. ft	Yes
5	Dining Area	10'2" x 11'3"	113 sq. ft	Yes
6	Primary Bath	13'11" x 10'11"	112 sq. ft	Yes
7	Living Room	13'1" x 22'4"	258 sq. ft	Yes
8	Bath	7'5" x 9'8"	65 sq. ft	Yes
9	Hall	11'7" x 3'7"	42 sq. ft	Yes
10	Kitchen	11'7" x 12'4"	117 sq. ft	Yes
11	WC	2'4" x 6'0"	14 sq. ft	Yes

Home report

2035 Nocturne Court Southeast, Salem, Oregon 97306, United States

#		Max Dimensions	sqft	Included
12	Bedroom	11'3" x 10'11"	105 sq. ft	Yes

1 Floor 1 - Primary Bedroom



Max Dimensions: 13'11" x 11'0"  
Calculated Area: 154 sq. ft  
Included: Yes

Heated: Yes  
Finished: Yes  
Enclosed: Yes  
Contiguous: Yes  
Permitted: Yes  
Wet space: No  
Addition: No  
Conversion: No

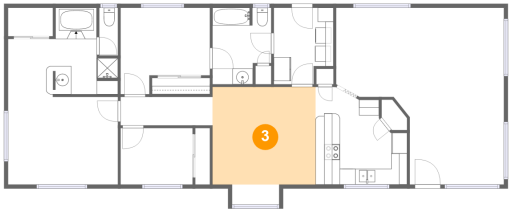
2 Floor 1 - Bedroom



Max Dimensions: 9'1" x 7'2"  
Calculated Area: 65 sq. ft  
Included: Yes

Heated: Yes  
Finished: Yes  
Enclosed: Yes  
Contiguous: Yes  
Permitted: Yes  
Wet space: No  
Addition: No  
Conversion: No

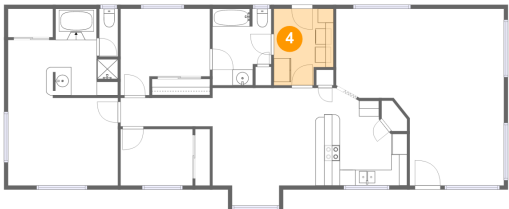
3 Floor 1 - Breakfast Nook



Max Dimensions: 13'0" x 12'4"  
Calculated Area: 161 sq. ft  
Included: Yes

Heated: Yes  
Finished: Yes  
Enclosed: Yes  
Contiguous: Yes  
Permitted: Yes  
Wet space: No  
Addition: No  
Conversion: No

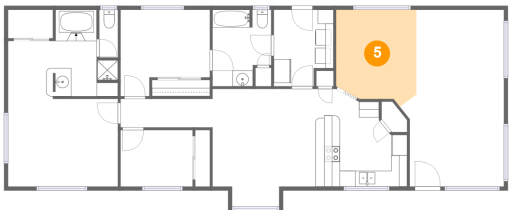
4 Floor 1 - Laundry



Max Dimensions: 7'6" x 9'8"  
Calculated Area: 67 sq. ft  
Included: Yes

Heated: Yes  
Finished: Yes  
Enclosed: Yes  
Contiguous: Yes  
Permitted: Yes  
Wet space: No  
Addition: No  
Conversion: No

5 Floor 1 - Dining Area

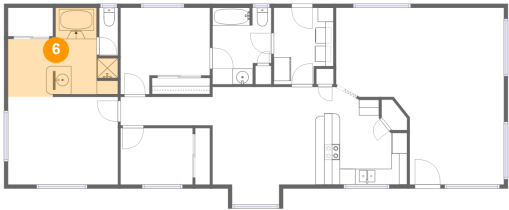


Max Dimensions: 10'2" x 11'3"  
Calculated Area: 113 sq. ft  
Included: Yes

Heated: Yes  
Finished: Yes  
Enclosed: Yes  
Contiguous: Yes  
Permitted: Yes  
Wet space: No  
Addition: No  
Conversion: No

2035 Nocturne Court Southeast, Salem, Oregon 97306, United States

6 Floor 1 - Primary Bath



Max Dimensions: 13'11" x 10'11"  
Calculated Area: 112 sq. ft  
Included: Yes

Heated: Yes  
Finished: Yes  
Enclosed: Yes  
Contiguous: Yes  
Permitted: Yes  
Wet space: Yes  
Addition: No  
Conversion: No

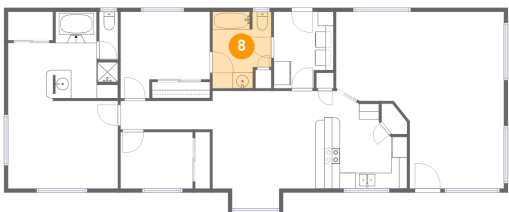
7 Floor 1 - Living Room



Max Dimensions: 13'1" x 22'4"  
Calculated Area: 258 sq. ft  
Included: Yes

Heated: Yes  
Finished: Yes  
Enclosed: Yes  
Contiguous: Yes  
Permitted: Yes  
Wet space: No  
Addition: No  
Conversion: No

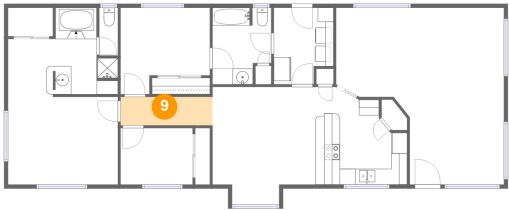
8 Floor 1 - Bath



Max Dimensions: 7'5" x 9'8"  
Calculated Area: 65 sq. ft  
Included: Yes

Heated: Yes  
Finished: Yes  
Enclosed: Yes  
Contiguous: Yes  
Permitted: Yes  
Wet space: Yes  
Addition: No  
Conversion: No

9 Floor 1 - Hall



Max Dimensions: 11'7" x 3'7"  
Calculated Area: 42 sq. ft  
Included: Yes

Heated: Yes  
Finished: Yes  
Enclosed: Yes  
Contiguous: Yes  
Permitted: Yes  
Wet space: No  
Addition: No  
Conversion: No

10 Floor 1 - Kitchen



Max Dimensions: 11'7" x 12'4"  
Calculated Area: 117 sq. ft  
Included: Yes

Heated: Yes  
Finished: Yes  
Enclosed: Yes  
Contiguous: Yes  
Permitted: Yes  
Wet space: No  
Addition: No  
Conversion: No

11 Floor 1 - WC



Max Dimensions: 2'4" x 6'0"  
Calculated Area: 14 sq. ft  
Included: Yes

Heated: Yes  
Finished: Yes  
Enclosed: Yes  
Contiguous: Yes  
Permitted: Yes  
Wet space: No  
Addition: No  
Conversion: No

2035 Nocturne Court Southeast, Salem, Oregon 97306, United States

12 Floor 1 - Bedroom



Max Dimensions: 11'3" x 10'11"  
Calculated Area: 105 sq. ft  
Included: Yes

Heated: Yes  
Finished: Yes  
Enclosed: Yes  
Contiguous: Yes  
Permitted: Yes  
Wet space: No  
Addition: No  
Conversion: No