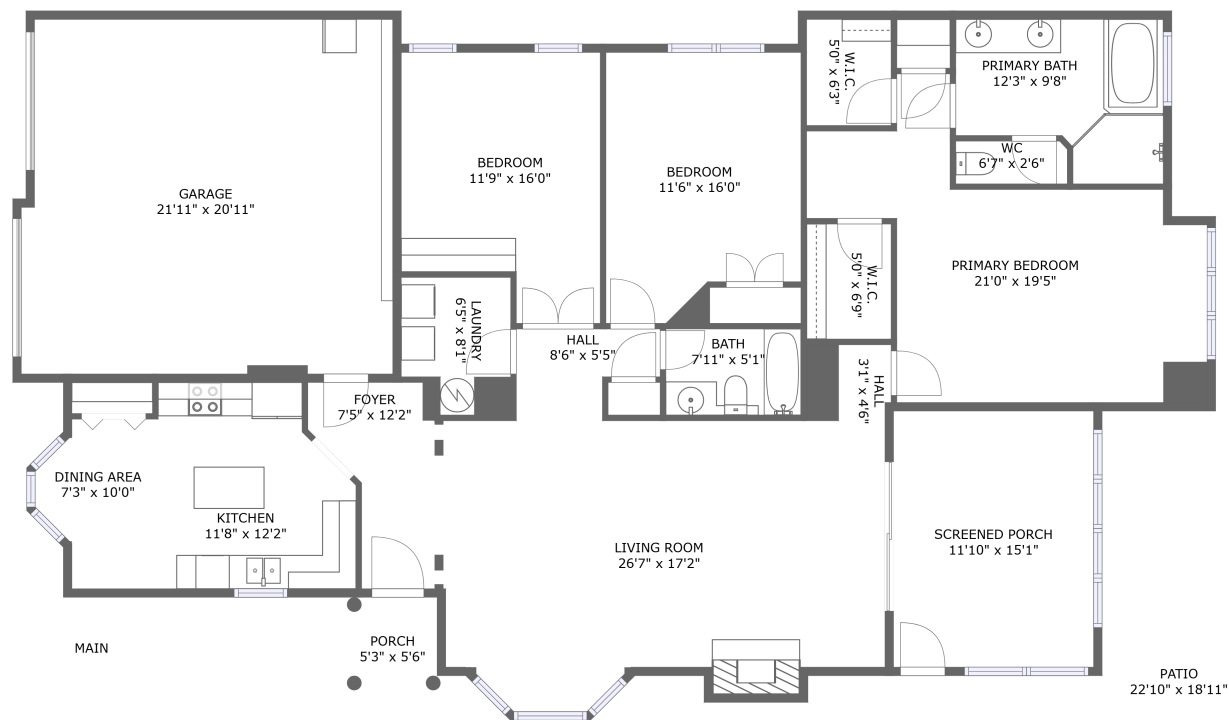




Home report


3303 Belshire Court, Franklin, Roanoke, Roanoke city, Virginia,
United States, 24014





Property summary


 **1** Garages


 **3** Bedrooms

 **2** Bathrooms

 **0** Half baths

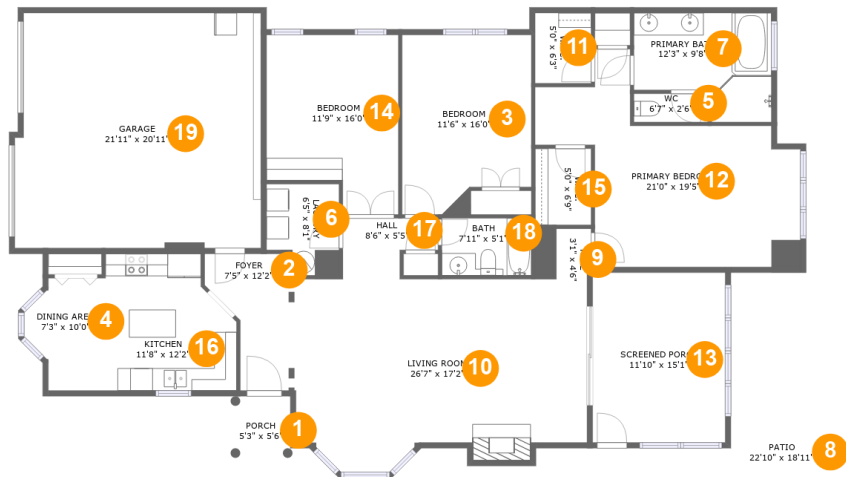
 **1** Floors

 **1,802** Gross living area sqft

 **2,739** Total sqft

Home report

3303 Belshire Court, Franklin, Roanoke, Roanoke city, Virginia,
United States, 24014



Room dimensions

Floor 1 Total sqft: 2739 Living area: 1802

#		Max Dimensions	sqft	Included
1	Porch	5'3" x 5'6"	29 sq. ft	No
2	Foyer	7'5" x 12'2"	66 sq. ft	Yes
3	Bedroom	11'6" x 16'0"	167 sq. ft	Yes
4	Dining Area	7'3" x 10'0"	60 sq. ft	Yes
5	WC	6'7" x 2'6"	16 sq. ft	Yes
6	Laundry	6'5" x 8'1"	47 sq. ft	Yes
7	Primary Bath	12'3" x 9'8"	99 sq. ft	Yes
8	Patio	22'10" x 18'11"	232 sq. ft	No
9	Hall	3'1" x 4'6"	14 sq. ft	Yes
10	Living Room	26'7" x 17'2"	410 sq. ft	Yes
11	W.I.C.	5'0" x 6'3"	31 sq. ft	Yes

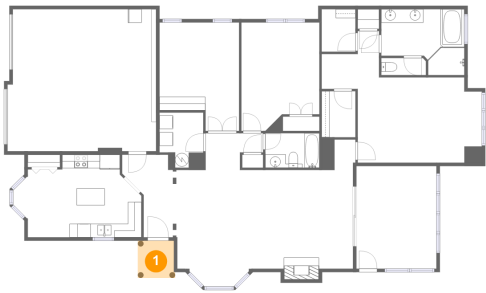
Home report

**3303 Belshire Court, Franklin, Roanoke, Roanoke city, Virginia,
United States, 24014**

#		Max Dimensions	sqft	Included
12	Primary Bedroom	21'0" x 19'5"	273 sq. ft	Yes
13	Screened Porch	11'10" x 15'1"	178 sq. ft	No
14	Bedroom	11'9" x 16'0"	167 sq. ft	Yes
15	W.I.C.	5'0" x 6'9"	34 sq. ft	Yes
16	Kitchen	11'8" x 12'2"	128 sq. ft	Yes
17	Hall	8'6" x 5'5"	37 sq. ft	Yes
18	Bath	7'11" x 5'1"	40 sq. ft	Yes
19	Garage	21'11" x 20'11"	450 sq. ft	No

3303 Belshire Court, Franklin, Roanoke, Roanoke city, Virginia,
United States, 24014

1 Floor 1 - Porch



Max Dimensions: 5'3" x 5'6"
Calculated Area: 29 sq. ft
Included: No

Heated: No
Finished: Yes
Enclosed: No
Contiguous: Yes
Permitted: Yes
Wet space: No
Addition: No
Conversion: No

2 Floor 1 - Foyer



Max Dimensions: 7'5" x
12'2"
Calculated Area: 66 sq. ft
Included: Yes

Heated: Yes
Finished: Yes
Enclosed: Yes
Contiguous:
Yes
Permitted: Yes
Wet space: No
Addition: No
Conversion: No

Home report

3303 Belshire Court, Franklin, Roanoke, Roanoke city, Virginia,
United States, 24014

3 Floor 1 - Bedroom



Max Dimensions: 11'6" x 16'0"
Calculated Area: 167 sq. ft
Included: Yes

Heated: Yes
Finished: Yes
Enclosed: Yes
Contiguous: Yes
Permitted: Yes
Wet space: No
Addition: No
Conversion: No

4 Floor 1 - Dining Area



Max Dimensions: 7'3" x 10'0"
Calculated Area: 60 sq. ft
Included: Yes

Heated: Yes
Finished: Yes
Enclosed: Yes
Contiguous: Yes
Permitted: Yes
Wet space: No
Addition: No
Conversion: No

5 Floor 1 - WC



Max Dimensions: 6'7" x 2'6"
Calculated Area: 16 sq. ft
Included: Yes

Heated: Yes
Finished: Yes
Enclosed: Yes
Contiguous: Yes
Permitted: Yes
Wet space: Yes
Addition: No
Conversion: No

3303 Belshire Court, Franklin, Roanoke, Roanoke city, Virginia,
United States, 24014

6 Floor 1 - Laundry



Max Dimensions: 6'5" x 8'1"
Calculated Area: 47 sq. ft
Included: Yes

Heated: Yes
Finished: Yes
Enclosed: Yes
Contiguous: Yes
Permitted: Yes
Wet space: No
Addition: No
Conversion: No

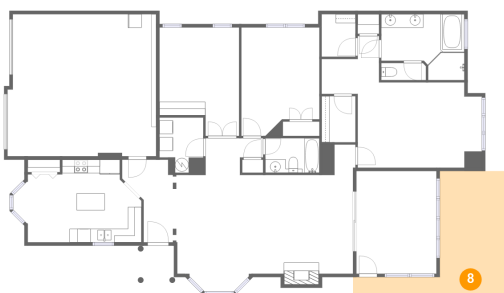
7 Floor 1 - Primary Bath



Max Dimensions: 12'3" x 9'8"
Calculated Area: 99 sq. ft
Included: Yes

Heated: Yes
Finished: Yes
Enclosed: Yes
Contiguous: Yes
Permitted: Yes
Wet space: Yes
Addition: No
Conversion: No

8 Floor 1 - Patio



Max Dimensions: 22'10" x 18'11"
Calculated Area: 232 sq. ft
Included: No

Heated: No
Finished: Yes
Enclosed: No
Contiguous: Yes
Permitted: Yes
Wet space: No
Addition: No
Conversion: No

Home report

3303 Belshire Court, Franklin, Roanoke, Roanoke city, Virginia,
United States, 24014

9 Floor 1 - Hall



Max Dimensions: 3'1" x 4'6"
Calculated Area: 14 sq. ft
Included: Yes

Heated: Yes
Finished: Yes
Enclosed: Yes
Contiguous: Yes
Permitted: Yes
Wet space: No
Addition: No
Conversion: No

10 Floor 1 - Living Room



Max Dimensions: 26'7" x 17'2"
Calculated Area: 410 sq. ft
Included: Yes

Heated: Yes
Finished: Yes
Enclosed: Yes
Contiguous: Yes
Permitted: Yes
Wet space: No
Addition: No
Conversion: No

11 Floor 1 - W.I.C.



Max Dimensions: 5'0" x 6'3"
Calculated Area: 31 sq. ft
Included: Yes

Heated: Yes
Finished: Yes
Enclosed: Yes
Contiguous: Yes
Permitted: Yes
Wet space: No
Addition: No
Conversion: No

3303 Belshire Court, Franklin, Roanoke, Roanoke city, Virginia,
United States, 24014

12 Floor 1 - Primary Bedroom



Max Dimensions: 21'0" x 19'5"
Calculated Area: 273 sq. ft
Included: Yes

Heated: Yes
Finished: Yes
Enclosed: Yes
Contiguous: Yes
Permitted: Yes
Wet space: No
Addition: No
Conversion: No

13 Floor 1 - Screened Porch



Max Dimensions: 11'10" x 15'1"
Calculated Area: 178 sq. ft
Included: No

Heated: No
Finished: Yes
Enclosed: No
Contiguous: Yes
Permitted: Yes
Wet space: No
Addition: No
Conversion: No

14 Floor 1 - Bedroom



Max Dimensions: 11'9" x 16'0"
Calculated Area: 167 sq. ft
Included: Yes

Heated: Yes
Finished: Yes
Enclosed: Yes
Contiguous: Yes
Permitted: Yes
Wet space: No
Addition: No
Conversion: No

3303 Belshire Court, Franklin, Roanoke, Roanoke city, Virginia,
United States, 24014

15 Floor 1 - W.I.C.



Max Dimensions: 5'0" x 6'9"
Calculated Area: 34 sq. ft
Included: Yes

Heated: Yes
Finished: Yes
Enclosed: Yes
Contiguous: Yes
Permitted: Yes
Wet space: No
Addition: No
Conversion: No

16 Floor 1 - Kitchen



Max Dimensions: 11'8" x
12'2"
Calculated Area: 128 sq. ft
Included: Yes

Heated: Yes
Finished: Yes
Enclosed: Yes
Contiguous:
Yes
Permitted: Yes
Wet space: No
Addition: No
Conversion: No

17 Floor 1 - Hall



Max Dimensions: 8'6" x 5'5"
Calculated Area: 37 sq. ft
Included: Yes

Heated: Yes
Finished: Yes
Enclosed: Yes
Contiguous: Yes
Permitted: Yes
Wet space: No
Addition: No
Conversion: No

3303 Belshire Court, Franklin, Roanoke, Roanoke city, Virginia,
United States, 24014

18 Floor 1 - Bath



Max Dimensions: 7'11" x 5'1"
Calculated Area: 40 sq. ft
Included: Yes

Heated: Yes
Finished: Yes
Enclosed: Yes
Contiguous: Yes
Permitted: Yes
Wet space: Yes
Addition: No
Conversion: No

19 Floor 1 - Garage



Max Dimensions: 21'11" x 20'11"
Calculated Area: 450 sq. ft
Included: No

Heated: No
Finished: No
Enclosed: Yes
Contiguous: Yes
Permitted: Yes
Wet space: No
Addition: No
Conversion: No