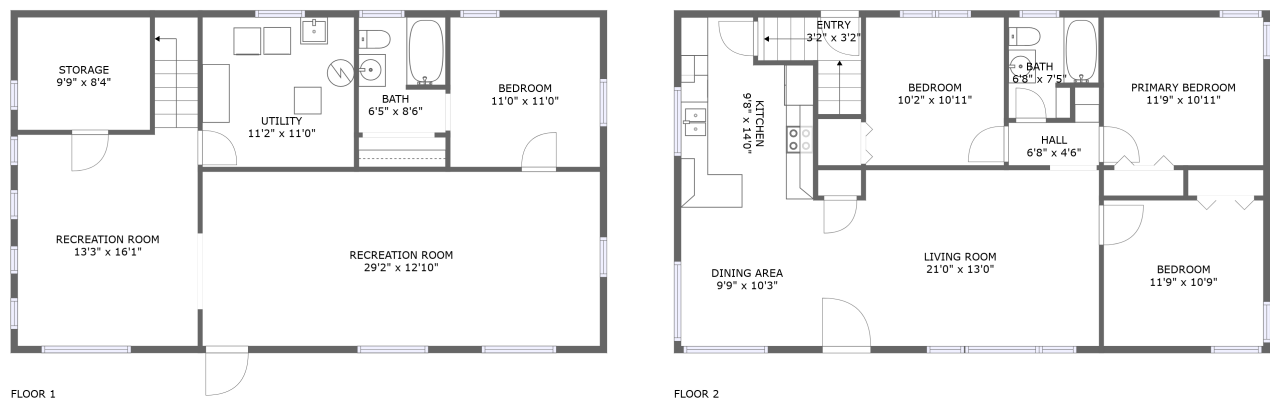




Home report


2762 Spruce Dr,Cheyenne,WY,US




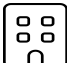
Property summary


**0**
Garages


**4**
Bedrooms

**2**
Bathrooms

**0**
Half baths

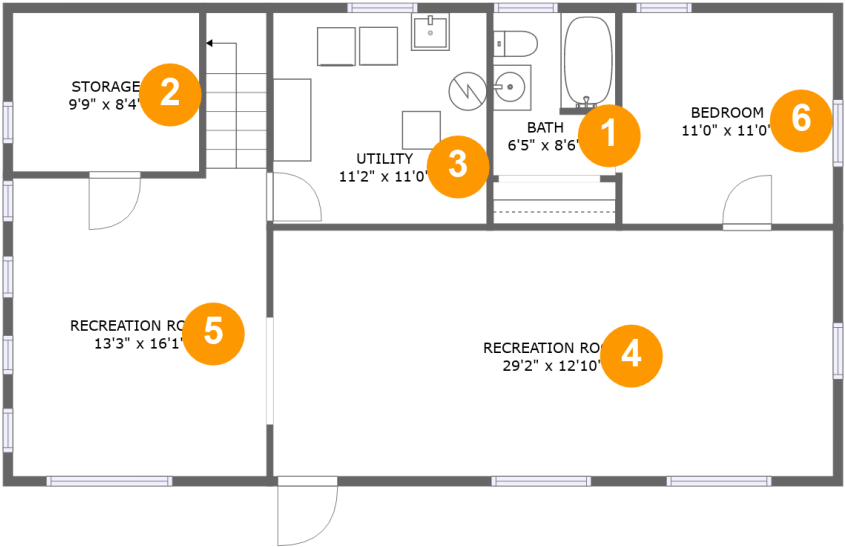
**2**
Floors

**1,988**
Gross living
area sqft

**2,206**
Total sqft

Home report

2762 Spruce Dr,Cheyenne,WY,US



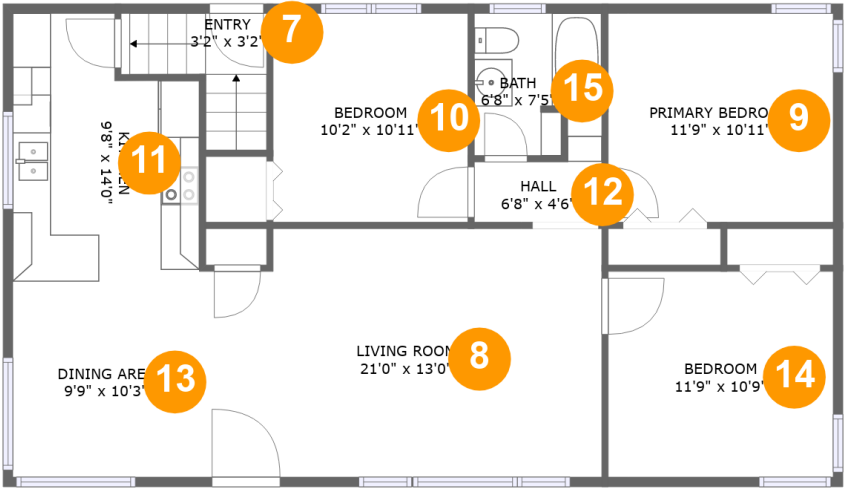
Room dimensions

Floor 1 Total sqft: 1103 Living area: 885

#		Dimensions	sqft	Counted as living area
1	Bath	6'5" x 8'6"	53 sq. ft	Yes
2	Storage	9'9" x 8'4"	81 sq. ft	No
3	Utility	11'2" x 11'0"	123 sq. ft	No
4	Recreation Room	29'2" x 12'10"	375 sq. ft	Yes
5	Recreation Room	13'3" x 16'1"	233 sq. ft	Yes
6	Bedroom	11'0" x 11'0"	121 sq. ft	Yes

Home report

2762 Spruce Dr,Cheyenne,WY,US



Room dimensions

Floor 2 Total sqft: 1103 Living area: 1103

#		Dimensions	sqft	Counted as living area
7	Entry	3'2" x 3'2"	37 sq. ft	Yes
8	Living Room	21'0" x 13'0"	264 sq. ft	Yes
9	Primary Bedroom	11'9" x 10'11"	128 sq. ft	Yes
10	Bedroom	10'2" x 10'11"	111 sq. ft	Yes
11	Kitchen	9'8" x 14'0"	120 sq. ft	Yes
12	Hall	6'8" x 4'6"	26 sq. ft	Yes
13	Dining Area	9'9" x 10'3"	99 sq. ft	Yes
14	Bedroom	11'9" x 10'9"	126 sq. ft	Yes
15	Bath	6'8" x 7'5"	43 sq. ft	Yes

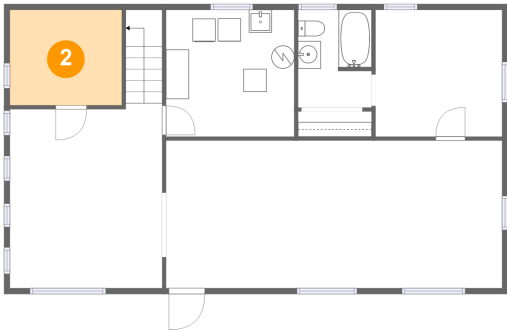
1 Floor 1 - Bath



Dimensions: 6'5" x 8'6"
Area: 53 sq. ft
Counted as living area: Yes

Heated: Yes
Finished: Yes
Enclosed: Yes
Contiguous: Yes
Permitted: Yes
Wet space: Yes
Addition: No
Conversion: No

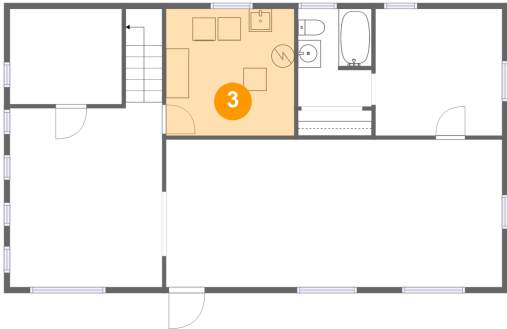
2 Floor 1 - Storage



Dimensions: 9'9" x 8'4"
Area: 81 sq. ft
Counted as living area: No

Heated: No
Finished: No
Enclosed: No
Contiguous: Yes
Permitted: Yes
Wet space: No
Addition: No
Conversion: No

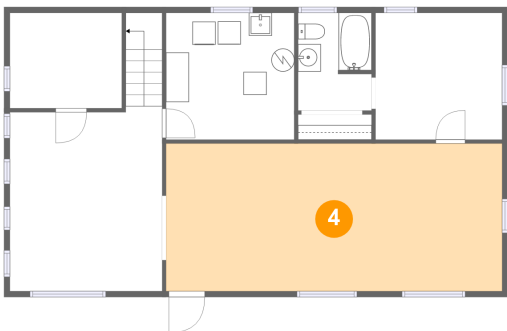
3 Floor 1 - Utility



Dimensions: 11'2" x 11'0"
Area: 123 sq. ft
Counted as living area: No

Heated: Yes
Finished: No
Enclosed: Yes
Contiguous: Yes
Permitted: Yes
Wet space: No
Addition: No
Conversion: No

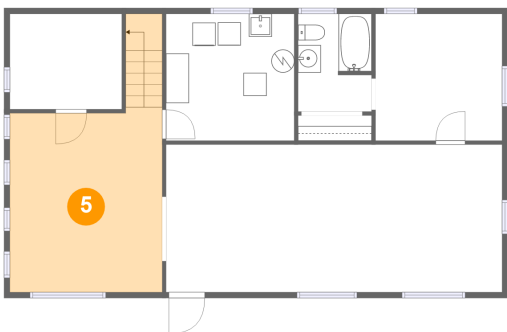
4 Floor 1 - Recreation Room



Dimensions: 29'2" x 12'10"
Area: 375 sq. ft
Counted as living area: Yes

Heated: Yes
Finished: Yes
Enclosed: Yes
Contiguous: Yes
Permitted: Yes
Wet space: No
Addition: No
Conversion: No

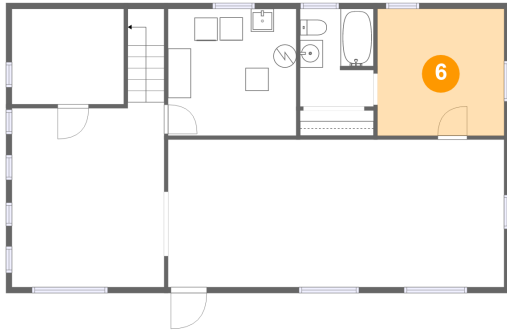
5 Floor 1 - Recreation Room



Dimensions: 13'3" x 16'1"
Area: 233 sq. ft
Counted as living area: Yes

Heated: Yes
Finished: Yes
Enclosed: Yes
Contiguous: Yes
Permitted: Yes
Wet space: No
Addition: No
Conversion: No

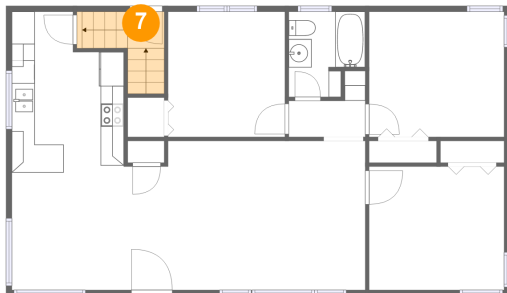
6 Floor 1 - Bedroom



Dimensions: 11'0" x 11'0"
Area: 121 sq. ft
Counted as living area: Yes

Heated: Yes
Finished: Yes
Enclosed: Yes
Contiguous: Yes
Permitted: Yes
Wet space: No
Addition: No
Conversion: No

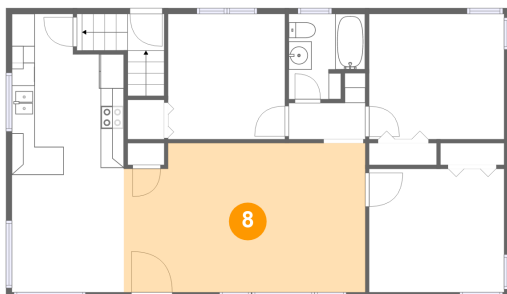
7 Floor 2 - Entry



Dimensions: 3'2" x 3'2"
Area: 37 sq. ft
Counted as living area: Yes

Heated: Yes
Finished: Yes
Enclosed: Yes
Contiguous: Yes
Permitted: Yes
Wet space: No
Addition: No
Conversion: No

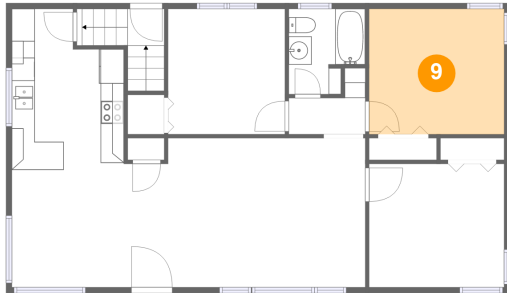
8 Floor 2 - Living Room



Dimensions: 21'0" x 13'0"
Area: 264 sq. ft
Counted as living area: Yes

Heated: Yes
Finished: Yes
Enclosed: Yes
Contiguous: Yes
Permitted: Yes
Wet space: No
Addition: No
Conversion: No

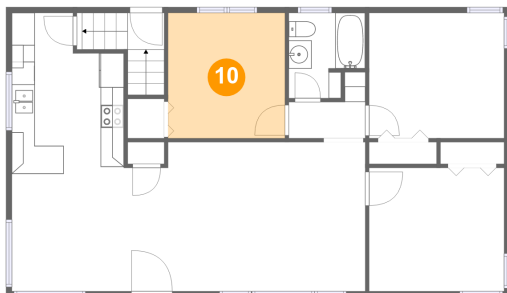
9 Floor 2 - Primary Bedroom



Dimensions: 11'9" x 10'11"
Area: 128 sq. ft
Counted as living area: Yes

Heated: Yes
Finished: Yes
Enclosed: Yes
Contiguous: Yes
Permitted: Yes
Wet space: No
Addition: No
Conversion: No

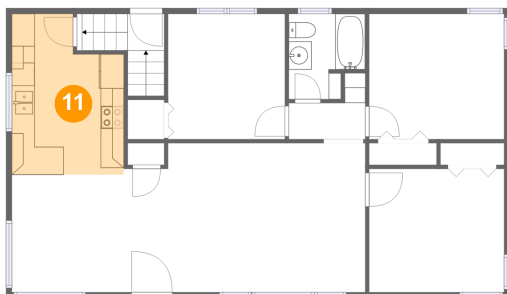
10 Floor 2 - Bedroom



Dimensions: 10'2" x 10'11"
Area: 111 sq. ft
Counted as living area: Yes

Heated: Yes
Finished: Yes
Enclosed: Yes
Contiguous: Yes
Permitted: Yes
Wet space: No
Addition: No
Conversion: No

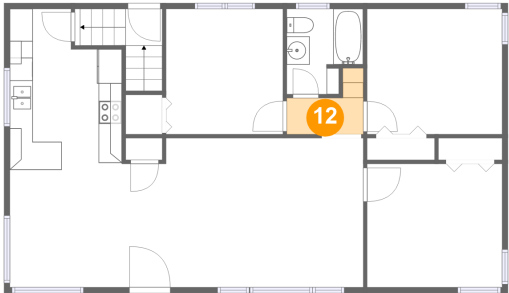
11 Floor 2 - Kitchen



Dimensions: 9'8" x 14'0"
Area: 120 sq. ft
Counted as living area: Yes

Heated: Yes
Finished: Yes
Enclosed: Yes
Contiguous: Yes
Permitted: Yes
Wet space: No
Addition: No
Conversion: No

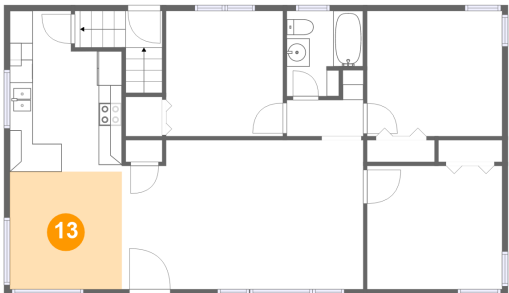
12 Floor 2 - Hall



Dimensions: 6'8" x 4'6"
Area: 26 sq. ft
Counted as living area: Yes

Heated: Yes
Finished: Yes
Enclosed: Yes
Contiguous: Yes
Permitted: Yes
Wet space: No
Addition: No
Conversion: No

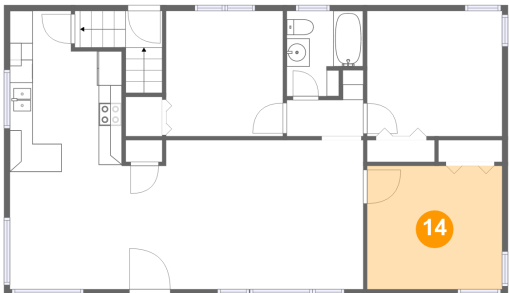
13 Floor 2 - Dining Area



Dimensions: 9'9" x 10'3"
Area: 99 sq. ft
Counted as living area: Yes

Heated: Yes
Finished: Yes
Enclosed: Yes
Contiguous: Yes
Permitted: Yes
Wet space: No
Addition: No
Conversion: No

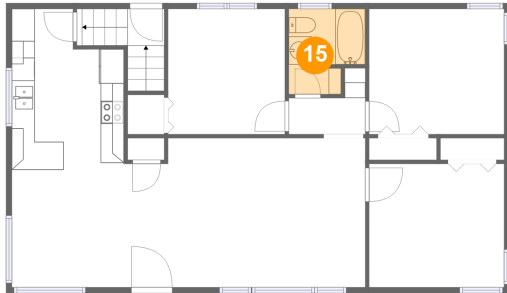
14 Floor 2 - Bedroom



Dimensions: 11'9" x 10'9"
Area: 126 sq. ft
Counted as living area: Yes

Heated: Yes
Finished: Yes
Enclosed: Yes
Contiguous: Yes
Permitted: Yes
Wet space: No
Addition: No
Conversion: No

15 Floor 2 - Bath



Dimensions: 6'8" x 7'5"
Area: 43 sq. ft
Counted as living area: Yes

Heated: Yes
Finished: Yes
Enclosed: Yes
Contiguous: Yes
Permitted: Yes
Wet space: Yes
Addition: No
Conversion: No