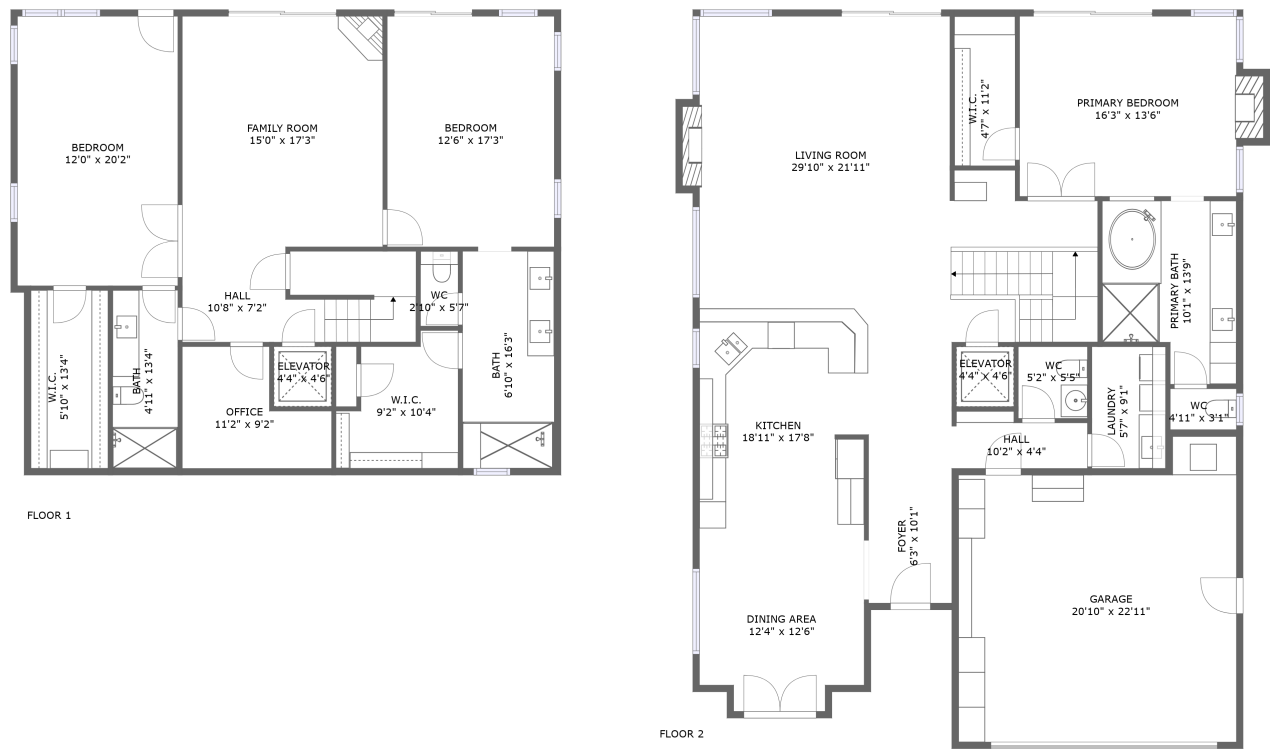




Home report


2815 Rock Wren Lane, Avila Beach, San Luis Obispo County,
California, United States, 93424





Property summary


 **1** Garages


 **3** Bedrooms

 **3** Bathrooms

 **1** Half baths

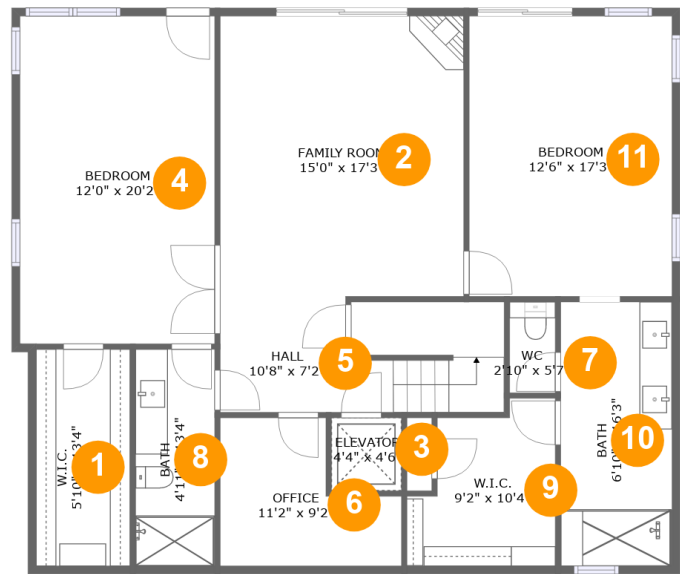
 **2** Floors

 **3,105** Gross living area sqft

 **3,622** Total sqft

Home report

2815 Rock Wren Lane, Avila Beach, San Luis Obispo County,
California, United States, 93424



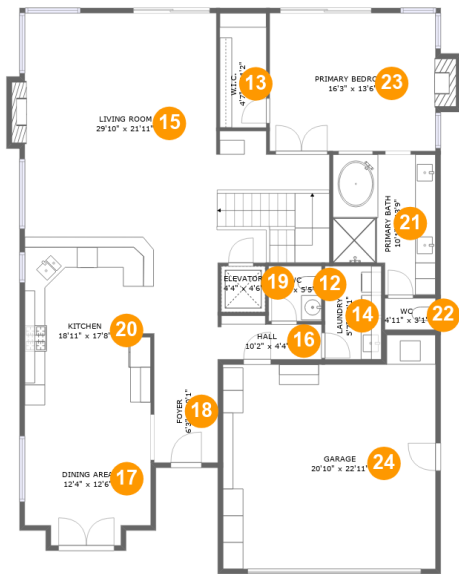
Room dimensions

Floor 1 Total sqft: 1423 Living area: 1404

#		Dimensions	sqft	Counted as living area
1	W.I.C.	5'10" x 13'4"	77 sq. ft	Yes
2	Family Room	15'0" x 17'3"	259 sq. ft	Yes
3	Elevator	4'4" x 4'6"	19 sq. ft	No
4	Bedroom	12'0" x 20'2"	243 sq. ft	Yes
5	Hall	10'8" x 7'2"	87 sq. ft	Yes
6	Office	11'2" x 9'2"	80 sq. ft	Yes
7	WC	2'10" x 5'7"	16 sq. ft	Yes
8	Bath	4'11" x 13'4"	65 sq. ft	Yes
9	W.I.C.	9'2" x 10'4"	78 sq. ft	Yes
10	Bath	6'10" x 16'3"	112 sq. ft	Yes
11	Bedroom	12'6" x 17'3"	216 sq. ft	Yes

Home report

2815 Rock Wren Lane, Avila Beach, San Luis Obispo County,
California, United States, 93424



Room dimensions

Floor 2 Total sqft: 2199 Living area: 1701

#		Dimensions	sqft	Counted as living area
12	WC	5'2" x 5'5"	28 sq. ft	Yes
13	W.I.C.	4'7" x 11'2"	51 sq. ft	Yes
14	Laundry	5'7" x 9'1"	51 sq. ft	Yes
15	Living Room	29'10" x 21'11"	546 sq. ft	Yes
16	Hall	10'2" x 4'4"	38 sq. ft	Yes
17	Dining Area	12'4" x 12'6"	143 sq. ft	Yes
18	Foyer	6'3" x 10'1"	63 sq. ft	Yes
19	Elevator	4'4" x 4'6"	19 sq. ft	No
20	Kitchen	18'11" x 17'8"	295 sq. ft	Yes
21	Primary Bath	10'1" x 13'9"	122 sq. ft	Yes
22	WC	4'11" x 3'1"	15 sq. ft	Yes

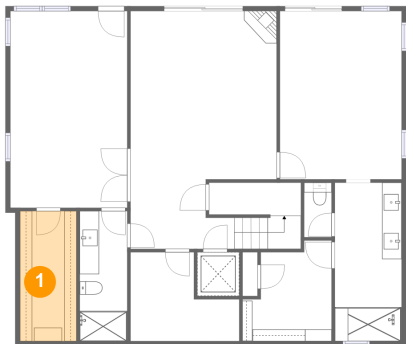
Home report

2815 Rock Wren Lane, Avila Beach, San Luis Obispo County,
California, United States, 93424

#		Dimensions	sqft	Counted as living area
23	Primary Bedroom	16'3" x 13'6"	230 sq. ft	Yes
24	Garage	20'10" x 22'11"	430 sq. ft	No

2815 Rock Wren Lane, Avila Beach, San Luis Obispo County,
California, United States, 93424

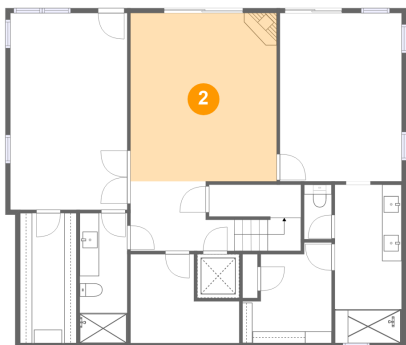
1 Floor 1 - W.I.C.



Dimensions: 5'10" x 13'4"
Area: 77 sq. ft
Counted as living area: Yes

Heated: Yes
Finished: Yes
Enclosed: Yes
Contiguous: Yes
Permitted: Yes
Wet space: No
Addition: No
Conversion: No

2 Floor 1 - Family Room

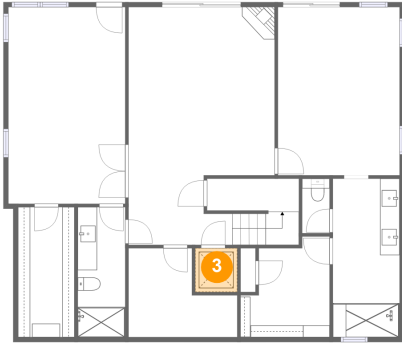


Dimensions: 15'0" x 17'3"
Area: 259 sq. ft
Counted as living area: Yes

Heated: Yes
Finished: Yes
Enclosed: Yes
Contiguous: Yes
Permitted: Yes
Wet space: No
Addition: No
Conversion: No

2815 Rock Wren Lane, Avila Beach, San Luis Obispo County,
California, United States, 93424

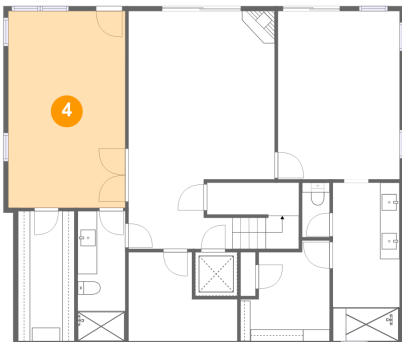
3 Floor 1 - Elevator



Dimensions: 4'4" x 4'6"
Area: 19 sq. ft
Counted as living area: No

Heated: No
Finished: No
Enclosed: Yes
Contiguous: Yes
Permitted: Yes
Wet space: No
Addition: No
Conversion: No

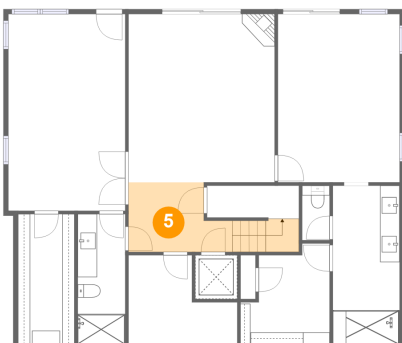
4 Floor 1 - Bedroom



Dimensions: 12'0" x 20'2"
Area: 243 sq. ft
Counted as living area: Yes

Heated: Yes
Finished: Yes
Enclosed: Yes
Contiguous: Yes
Permitted: Yes
Wet space: No
Addition: No
Conversion: No

5 Floor 1 - Hall



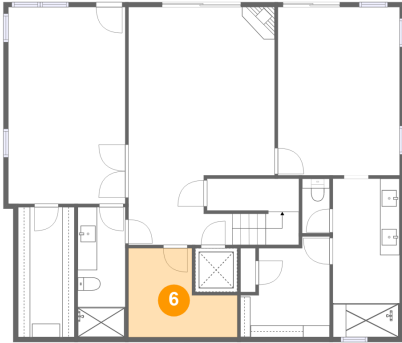
Dimensions: 10'8" x 7'2"
Area: 87 sq. ft
Counted as living area: Yes

Heated: Yes
Finished: Yes
Enclosed: Yes
Contiguous: Yes
Permitted: Yes
Wet space: No
Addition: No
Conversion: No

Home report

2815 Rock Wren Lane, Avila Beach, San Luis Obispo County,
California, United States, 93424

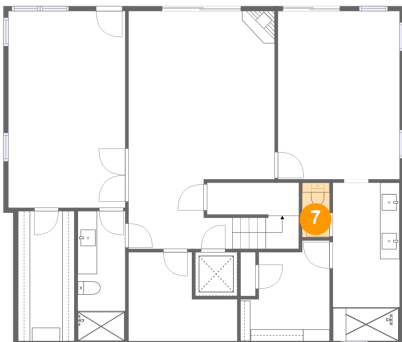
6 Floor 1 - Office



Dimensions: 11'2" x 9'2"
Area: 80 sq. ft
Counted as living area: Yes

Heated: Yes
Finished: Yes
Enclosed: Yes
Contiguous: Yes
Permitted: Yes
Wet space: No
Addition: No
Conversion: No

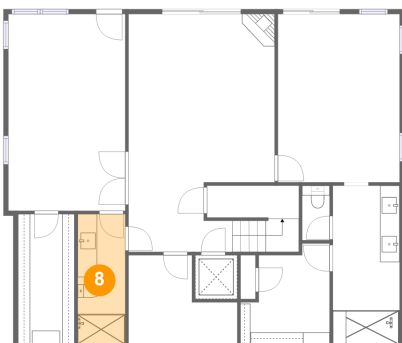
7 Floor 1 - WC



Dimensions: 2'10" x 5'7"
Area: 16 sq. ft
Counted as living area: Yes

Heated: Yes
Finished: Yes
Enclosed: Yes
Contiguous: Yes
Permitted: Yes
Wet space: Yes
Addition: No
Conversion: No

8 Floor 1 - Bath



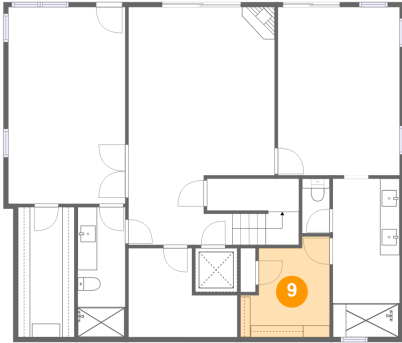
Dimensions: 4'11" x 13'4"
Area: 65 sq. ft
Counted as living area: Yes

Heated: Yes
Finished: Yes
Enclosed: Yes
Contiguous: Yes
Permitted: Yes
Wet space: Yes
Addition: No
Conversion: No

Home report

2815 Rock Wren Lane, Avila Beach, San Luis Obispo County,
California, United States, 93424

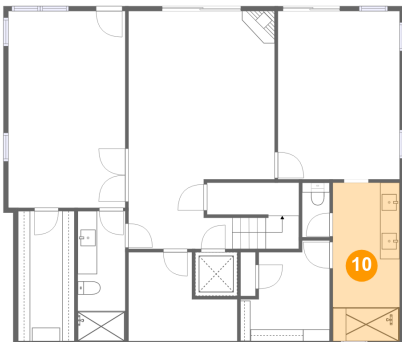
9 Floor 1 - W.I.C.



Dimensions: 9'2" x 10'4"
Area: 78 sq. ft
Counted as living area: Yes

Heated: Yes
Finished: Yes
Enclosed: Yes
Contiguous: Yes
Permitted: Yes
Wet space: No
Addition: No
Conversion: No

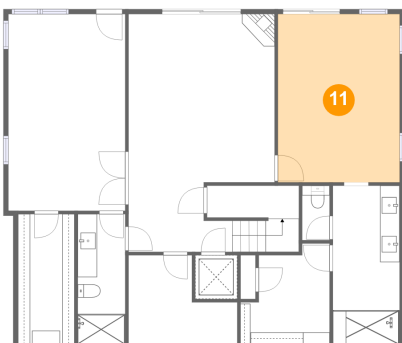
10 Floor 1 - Bath



Dimensions: 6'10" x 16'3"
Area: 112 sq. ft
Counted as living area: Yes

Heated: Yes
Finished: Yes
Enclosed: Yes
Contiguous: Yes
Permitted: Yes
Wet space: Yes
Addition: No
Conversion: No

11 Floor 1 - Bedroom



Dimensions: 12'6" x 17'3"
Area: 216 sq. ft
Counted as living area: Yes

Heated: Yes
Finished: Yes
Enclosed: Yes
Contiguous: Yes
Permitted: Yes
Wet space: No
Addition: No
Conversion: No

2815 Rock Wren Lane, Avila Beach, San Luis Obispo County,
California, United States, 93424

12 Floor 2 - WC



Dimensions: 5'2" x 5'5"
Area: 28 sq. ft
Counted as living area: Yes

Heated: Yes
Finished: Yes
Enclosed: Yes
Contiguous: Yes
Permitted: Yes
Wet space: Yes
Addition: No
Conversion: No

13 Floor 2 - W.I.C.



Dimensions: 4'7" x 11'2"
Area: 51 sq. ft
Counted as living area: Yes

Heated: Yes
Finished: Yes
Enclosed: Yes
Contiguous: Yes
Permitted: Yes
Wet space: No
Addition: No
Conversion: No

14 Floor 2 - Laundry



Dimensions: 5'7" x 9'1"
Area: 51 sq. ft
Counted as living area: Yes

Heated: Yes
Finished: Yes
Enclosed: Yes
Contiguous: Yes
Permitted: Yes
Wet space: No
Addition: No
Conversion: No

2815 Rock Wren Lane, Avila Beach, San Luis Obispo County,
California, United States, 93424

15 Floor 2 - Living Room



Dimensions: 29'10" x 21'11"
Area: 546 sq. ft
Counted as living area: Yes

Heated: Yes
Finished: Yes
Enclosed: Yes
Contiguous: Yes
Permitted: Yes
Wet space: No
Addition: No
Conversion: No

16 Floor 2 - Hall



Dimensions: 10'2" x 4'4"
Area: 38 sq. ft
Counted as living area: Yes

Heated: Yes
Finished: Yes
Enclosed: Yes
Contiguous: Yes
Permitted: Yes
Wet space: No
Addition: No
Conversion: No

17 Floor 2 - Dining Area



Dimensions: 12'4" x 12'6"
Area: 143 sq. ft
Counted as living area: Yes

Heated: Yes
Finished: Yes
Enclosed: Yes
Contiguous: Yes
Permitted: Yes
Wet space: No
Addition: No
Conversion: No

2815 Rock Wren Lane, Avila Beach, San Luis Obispo County,
California, United States, 93424

18 Floor 2 - Foyer



Dimensions: 6'3" x 10'1"
Area: 63 sq. ft
Counted as living area: Yes

Heated: Yes
Finished: Yes
Enclosed: Yes
Contiguous: Yes
Permitted: Yes
Wet space: No
Addition: No
Conversion: No

19 Floor 2 - Elevator



Dimensions: 4'4" x 4'6"
Area: 19 sq. ft
Counted as living area: No

Heated: No
Finished: No
Enclosed: Yes
Contiguous: Yes
Permitted: Yes
Wet space: No
Addition: No
Conversion: No

20 Floor 2 - Kitchen



Dimensions: 18'11" x 17'8"
Area: 295 sq. ft
Counted as living area: Yes

Heated: Yes
Finished: Yes
Enclosed: Yes
Contiguous: Yes
Permitted: Yes
Wet space: No
Addition: No
Conversion: No

2815 Rock Wren Lane, Avila Beach, San Luis Obispo County,
California, United States, 93424

21 Floor 2 - Primary Bath



Dimensions: 10'1" x 13'9"
Area: 122 sq. ft
Counted as living area: Yes

Heated: Yes
Finished: Yes
Enclosed: Yes
Contiguous: Yes
Permitted: Yes
Wet space: Yes
Addition: No
Conversion: No

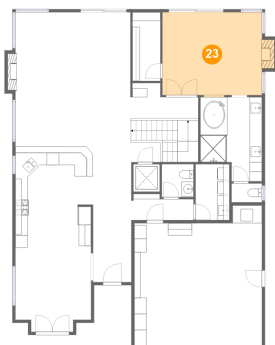
22 Floor 2 - WC



Dimensions: 4'11" x 3'1"
Area: 15 sq. ft
Counted as living area: Yes

Heated: Yes
Finished: Yes
Enclosed: Yes
Contiguous: Yes
Permitted: Yes
Wet space: Yes
Addition: No
Conversion: No

23 Floor 2 - Primary Bedroom



Dimensions: 16'3" x 13'6"
Area: 230 sq. ft
Counted as living area: Yes

Heated: Yes
Finished: Yes
Enclosed: Yes
Contiguous: Yes
Permitted: Yes
Wet space: No
Addition: No
Conversion: No

2815 Rock Wren Lane, Avila Beach, San Luis Obispo County,
California, United States, 93424

24 Floor 2 - Garage



Dimensions: 20'10" x 22'11"
Area: 430 sq. ft
Counted as living area: No

Heated: No
Finished: No
Enclosed: Yes
Contiguous: Yes
Permitted: Yes
Wet space: No
Addition: No
Conversion: No