


2871 Midland Street, Brookline, Pittsburgh, Allegheny County, Pennsylvania, United States,



Property summary


 **1** Garages

 **3** Bedrooms

 **1** Bathrooms

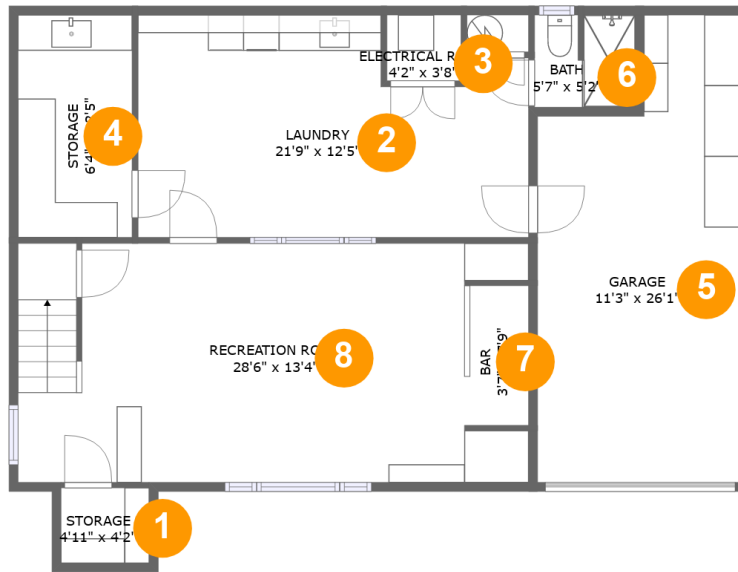
 **1** Half baths

 **2** Floors

 **1,843**
Gross living
area sqft

 **2,714**
Total sqft

**2871 Midland Street, Brookline, Pittsburgh,
Allegheny County, Pennsylvania, United States,**



Room dimensions

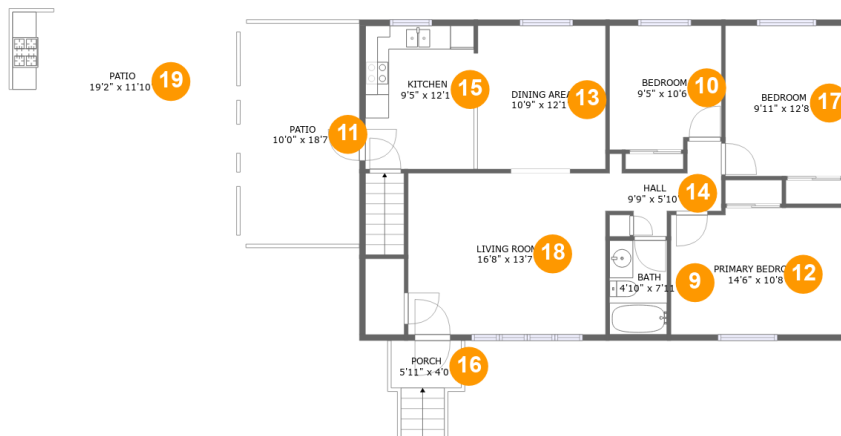
Floor 1

Total sqft: 1142

Living area: 727

#		Dimensions	sqft	Counted as living area
1	Storage	4'11" x 4'2"	21 sq. ft	No
2	Utility	21'9" x 12'5"	243 sq. ft	Yes
3	Room	4'2" x 3'8"	15 sq. ft	No
4	Storage	6'4" x 12'5"	79 sq. ft	No
5	Garage	11'3" x 26'1"	260 sq. ft	No
6	Bath	5'7" x 5'2"	28 sq. ft	Yes
7	Bar	3'7" x 7'9"	28 sq. ft	Yes
8	Recreation Room	28'6" x 13'4"	337 sq. ft	Yes

**2871 Midland Street, Brookline, Pittsburgh,
Allegheny County, Pennsylvania, United States,**



Room dimensions

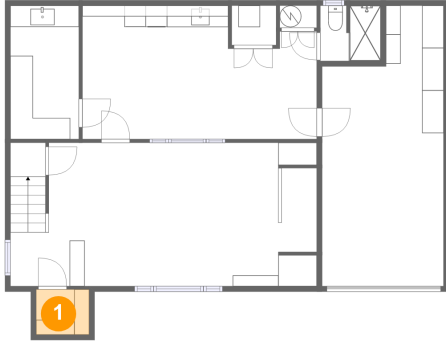
Floor 2

Total sqft: 1572 Living area: 1116

#		Dimensions	sqft	Counted as living area
9	Bath	4'10" x 7'11"	39 sq. ft	Yes
10	Bedroom	9'5" x 10'6"	95 sq. ft	Yes
11	Outdoor	10'0" x 18'7"	187 sq. ft	No
12	Bedroom	14'6" x 10'8"	152 sq. ft	Yes
13	Dining Room	10'9" x 12'1"	131 sq. ft	Yes
14	Hall	9'9" x 5'10"	47 sq. ft	Yes
15	Kitchen	9'5" x 12'1"	114 sq. ft	Yes
16	Outdoor	5'11" x 4'0"	40 sq. ft	No
17	Bedroom	9'11" x 12'8"	125 sq. ft	Yes
18	Living Room	16'8" x 13'7"	227 sq. ft	Yes
19	Outdoor	19'2" x 11'10"	228 sq. ft	No

**2871 Midland Street, Brookline, Pittsburgh,
Allegheny County, Pennsylvania, United States,**

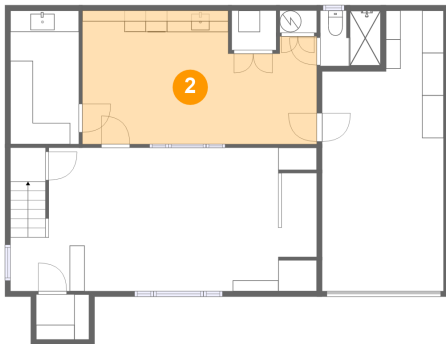
1 Floor 1 - Storage



Dimensions: 4'11" x 4'2"
Area: 21 sq. ft
Counted as living area: No

Heated: No
Finished: Yes
Enclosed: No
Contiguous: Yes
Permitted: Yes
Wet space: No
Addition: No
Conversion: No

2 Floor 1 - Utility

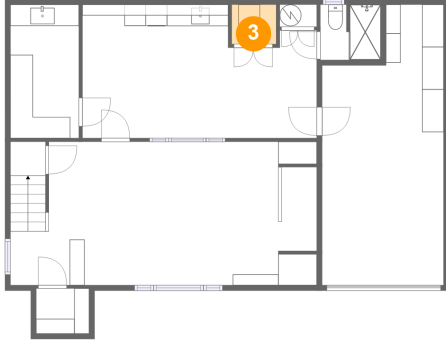


Dimensions: 21'9" x 12'5"
Area: 243 sq. ft
Counted as living area: Yes

Heated: Yes
Finished: Yes
Enclosed: Yes
Contiguous: Yes
Permitted: Yes
Wet space: No
Addition: No
Conversion: No

**2871 Midland Street, Brookline, Pittsburgh,
Allegheny County, Pennsylvania, United States,**

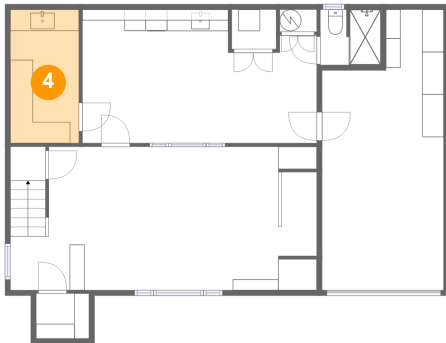
3 Floor 1 - Room



Dimensions: 4'2" x 3'8"
Area: 15 sq. ft
Counted as living area: No

Heated: No
Finished: No
Enclosed: Yes
Contiguous: Yes
Permitted: Yes
Wet space: No
Addition: No
Conversion: No

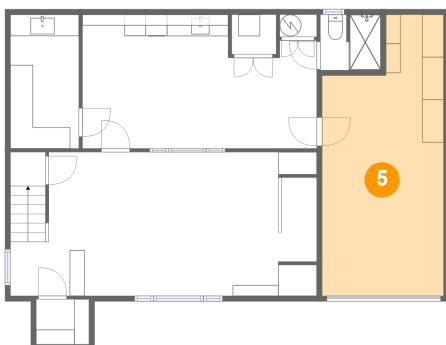
4 Floor 1 - Storage



Dimensions: 6'4" x 12'5"
Area: 79 sq. ft
Counted as living area: No

Heated: No
Finished: Yes
Enclosed: No
Contiguous: Yes
Permitted: Yes
Wet space: No
Addition: No
Conversion: No

5 Floor 1 - Garage

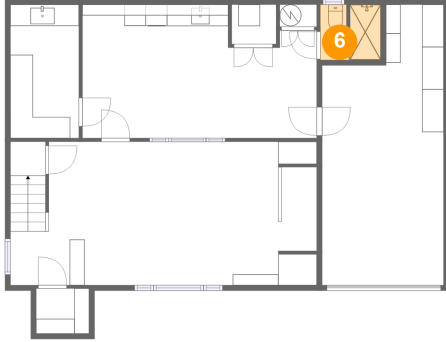


Dimensions: 11'3" x 26'1"
Area: 260 sq. ft
Counted as living area: No

Heated: No
Finished: No
Enclosed: Yes
Contiguous: Yes
Permitted: Yes
Wet space: No
Addition: No
Conversion: No

**2871 Midland Street, Brookline, Pittsburgh,
Allegheny County, Pennsylvania, United States,**

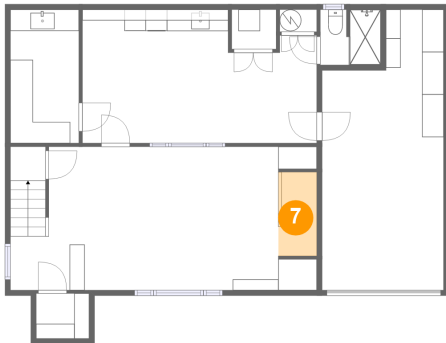
6 Floor 1 - Bath



Dimensions: 5'7" x 5'2"
Area: 28 sq. ft
Counted as living area: Yes

Heated: Yes
Finished: Yes
Enclosed: Yes
Contiguous: Yes
Permitted: Yes
Wet space: Yes
Addition: No
Conversion: No

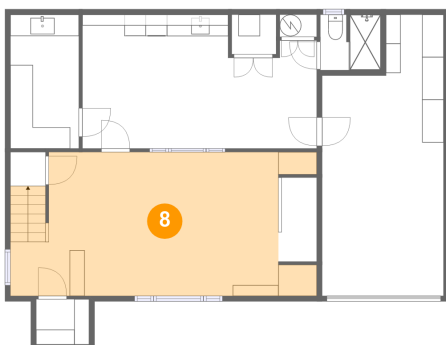
7 Floor 1 - Bar



Dimensions: 3'7" x 7'9"
Area: 28 sq. ft
Counted as living area: Yes

Heated: Yes
Finished: Yes
Enclosed: Yes
Contiguous: Yes
Permitted: Yes
Wet space: No
Addition: No
Conversion: No

8 Floor 1 - Recreation Room

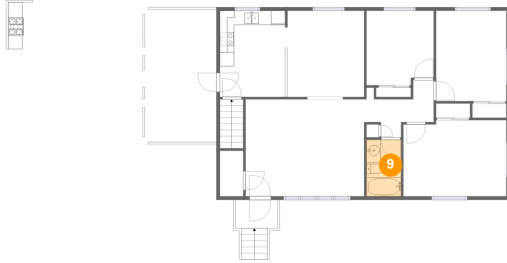


Dimensions: 28'6" x 13'4"
Area: 337 sq. ft
Counted as living area: Yes

Heated: Yes
Finished: Yes
Enclosed: Yes
Contiguous: Yes
Permitted: Yes
Wet space: No
Addition: No
Conversion: No

**2871 Midland Street, Brookline, Pittsburgh,
Allegheny County, Pennsylvania, United States,**

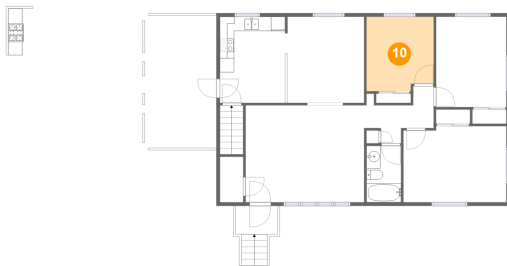
9 Floor 2 - Bath



Dimensions: 4'10" x 7'11"
Area: 39 sq. ft
Counted as living area: Yes

Heated: Yes
Finished: Yes
Enclosed: Yes
Contiguous: Yes
Permitted: Yes
Wet space: Yes
Addition: No
Conversion: No

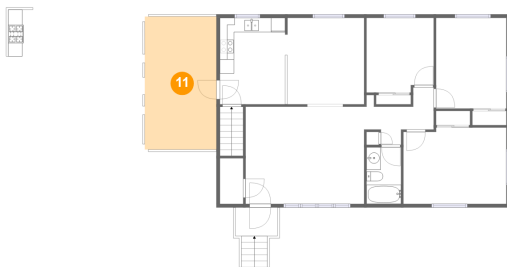
10 Floor 2 - Bedroom



Dimensions: 9'5" x 10'6"
Area: 95 sq. ft
Counted as living area: Yes

Heated: Yes
Finished: Yes
Enclosed: Yes
Contiguous: Yes
Permitted: Yes
Wet space: No
Addition: No
Conversion: No

11 Floor 2 - Outdoor



Dimensions: 10'0" x 18'7"
Area: 187 sq. ft
Counted as living area: No

Heated: No
Finished: Yes
Enclosed: No
Contiguous: Yes
Permitted: Yes
Wet space: No
Addition: No
Conversion: No

**2871 Midland Street, Brookline, Pittsburgh,
Allegheny County, Pennsylvania, United States,**

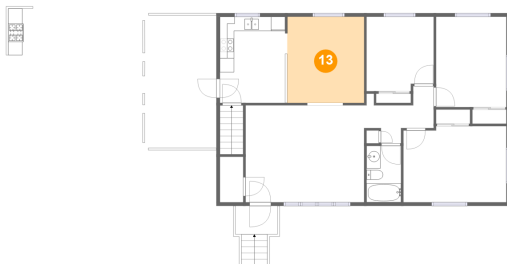
12 Floor 2 - Bedroom



Dimensions: 14'6" x 10'8"
Area: 152 sq. ft
Counted as living area: Yes

Heated: Yes
Finished: Yes
Enclosed: Yes
Contiguous: Yes
Permitted: Yes
Wet space: No
Addition: No
Conversion: No

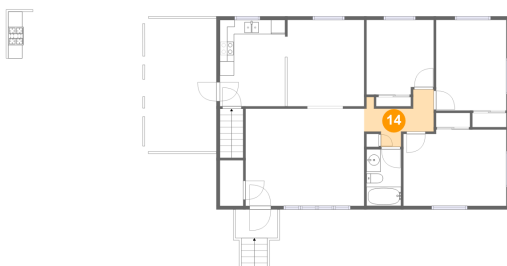
13 Floor 2 - Dining Room



Dimensions: 10'9" x 12'1"
Area: 131 sq. ft
Counted as living area: Yes

Heated: Yes
Finished: Yes
Enclosed: Yes
Contiguous: Yes
Permitted: Yes
Wet space: No
Addition: No
Conversion: No

14 Floor 2 - Hall

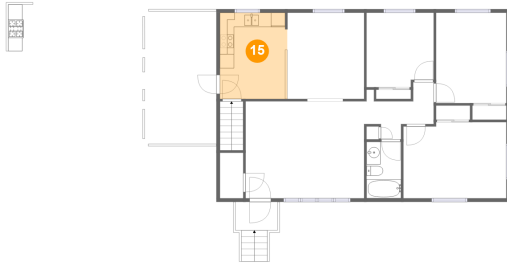


Dimensions: 9'9" x 5'10"
Area: 47 sq. ft
Counted as living area: Yes

Heated: Yes
Finished: Yes
Enclosed: Yes
Contiguous: Yes
Permitted: Yes
Wet space: No
Addition: No
Conversion: No

**2871 Midland Street, Brookline, Pittsburgh,
Allegheny County, Pennsylvania, United States,**

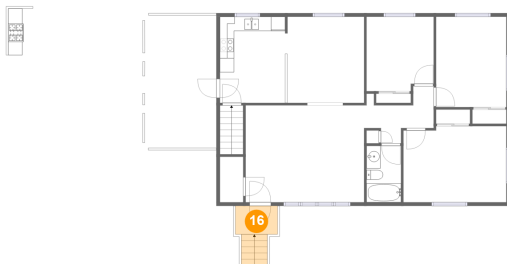
15 Floor 2 - Kitchen



Dimensions: 9'5" x 12'1"
Area: 114 sq. ft
Counted as living area: Yes

Heated: Yes
Finished: Yes
Enclosed: Yes
Contiguous: Yes
Permitted: Yes
Wet space: No
Addition: No
Conversion: No

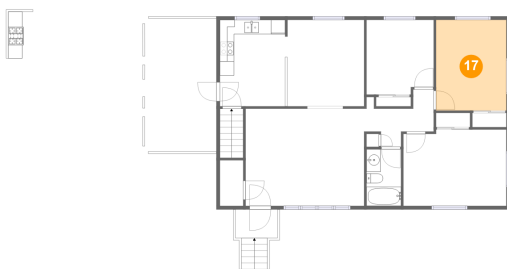
16 Floor 2 - Outdoor



Dimensions: 5'11" x 4'0"
Area: 40 sq. ft
Counted as living area: No

Heated: No
Finished: Yes
Enclosed: No
Contiguous: Yes
Permitted: Yes
Wet space: No
Addition: No
Conversion: No

17 Floor 2 - Bedroom



Dimensions: 9'11" x 12'8"
Area: 125 sq. ft
Counted as living area: Yes

Heated: Yes
Finished: Yes
Enclosed: Yes
Contiguous: Yes
Permitted: Yes
Wet space: No
Addition: No
Conversion: No

2871 Midland Street, Brookline, Pittsburgh, Allegheny County, Pennsylvania, United States,

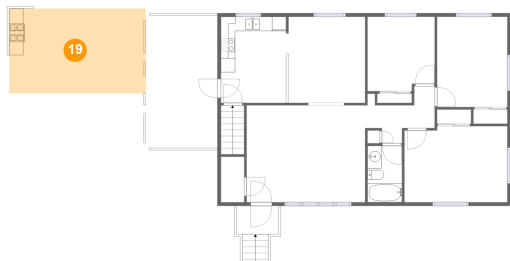
18 Floor 2 - Living Room



Dimensions: 16'8" x 13'7"
Area: 227 sq. ft
Counted as living area: Yes

Heated: Yes
Finished: Yes
Enclosed: Yes
Contiguous: Yes
Permitted: Yes
Wet space: No
Addition: No
Conversion: No

19 Floor 2 - Outdoor



Dimensions: 19'2" x 11'10"
Area: 228 sq. ft
Counted as living area: No

Heated: No
Finished: Yes
Enclosed: No
Contiguous: Yes
Permitted: Yes
Wet space: No
Addition: No
Conversion: No