


14506 Rolling Fields Lane, Chesterfield, Chesterfield County, Virginia, United States,



Property Summary

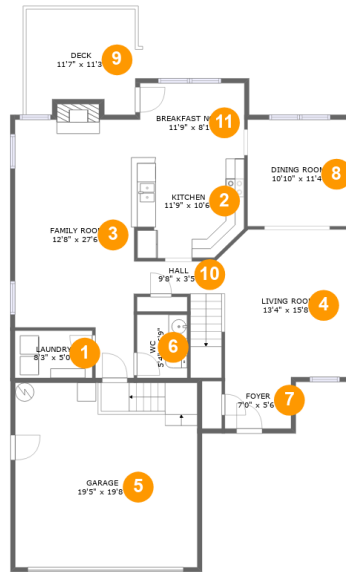
 **1** garages  **4** bedrooms  **2** bathrooms  **1** half baths

 **2** floors

 **2,309** Gross Living Area sqft

 **2,886** total sqft

14506 Rolling Fields Lane, Chesterfield, Chesterfield County, Virginia, United States,



Room Dimensions

Floor 1

Total sqft: 1682

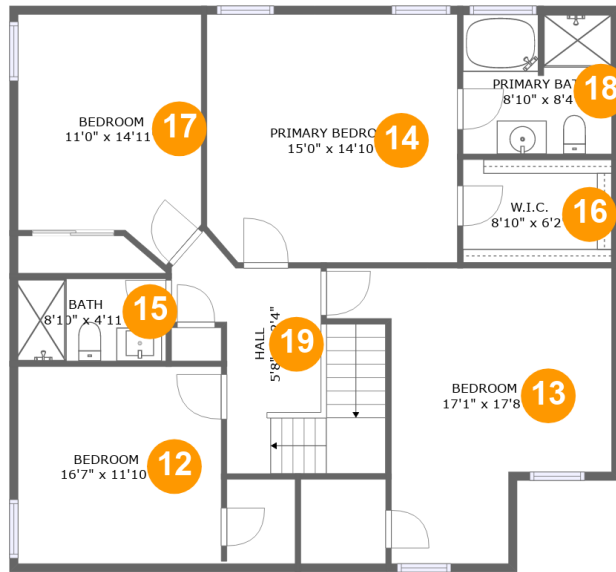
Living area: 1105

#	Room name	Dimensions	Area (sqft)	Counted as Living Area
1	Laundry	8'3" x 5'0"	41 sq. ft	Yes
2	Kitchen	11'9" x 10'6"	117 sq. ft	Yes
3	Family Room	12'8" x 27'6"	309 sq. ft	Yes
4	Living Room	13'4" x 15'8"	205 sq. ft	Yes
5	Garage	19'5" x 19'8"	381 sq. ft	No
6	Wc	5'4" x 6'9"	36 sq. ft	No
7	Foyer	7'0" x 5'6"	39 sq. ft	Yes
8	Dining Room	10'10" x 11'4"	123 sq. ft	Yes
9	Deck	11'7" x 11'3"	121 sq. ft	No
10	Hall	9'8" x 3'5"	65 sq. ft	Yes
11	Breakfast Nook	11'9" x 8'1"	93 sq. ft	Yes

Scan captured on Fri, 19 Jul 2024 16:40:16 GMT

Information is calculated by CubiCasa technology; deemed highly reliable but not guaranteed.

**14506 Rolling Fields Lane, Chesterfield,
Chesterfield County, Virginia, United States,**



Room Dimensions

Floor 2

Total sqft: 1204

Living area: 1204

#	Room name	Dimensions	Area (sqft)	Counted as Living Area
12	Bedroom	16'7" x 11'10"	164 sq. ft	Yes
13	Bedroom	17'1" x 17'8"	211 sq. ft	Yes
14	Primary Bedroom	15'0" x 14'10"	221 sq. ft	Yes
15	Bath	8'10" x 4'11"	44 sq. ft	Yes
16	W.i.c.	8'10" x 6'2"	55 sq. ft	Yes
17	Bedroom	11'0" x 14'11"	146 sq. ft	Yes
18	Primary Bath	8'10" x 8'4"	73 sq. ft	Yes
19	Hall	5'8" x 12'4"	119 sq. ft	Yes

14506 Rolling Fields Lane, Chesterfield, Chesterfield County, Virginia, United States,

1 Floor 1 - Laundry



Dimensions: 8'3" x 5'0"
Area: 41 sq. ft
Counted as Living Area:
Yes

Heated: Yes
Finished: Yes
Enclosed: Yes
Contiguous:
Yes
Permitted: Yes
Wet Space: No
Addition: No
Conversion: No

2 Floor 1 - Kitchen



Dimensions: 11'9" x 10'6"
Area: 117 sq. ft
Counted as Living Area:
Yes

Heated: Yes
Finished: Yes
Enclosed: Yes
Contiguous:
Yes
Permitted: Yes
Wet Space: No
Addition: No
Conversion: No

14506 Rolling Fields Lane, Chesterfield, Chesterfield County, Virginia, United States,

3 Floor 1 - Family Room



Dimensions: 12'8" x 27'6"
Area: 309 sq. ft
Counted as Living Area:
Yes

Heated: Yes
Finished: Yes
Enclosed: Yes
Contiguous:
Yes
Permitted: Yes
Wet Space: No
Addition: No
Conversion: No

4 Floor 1 - Living Room



Dimensions: 13'4" x 15'8"
Area: 205 sq. ft
Counted as Living Area:
Yes

Heated: Yes
Finished: Yes
Enclosed: Yes
Contiguous:
Yes
Permitted: Yes
Wet Space: No
Addition: No
Conversion: No

5 Floor 1 - Garage



Dimensions: 19'5" x 19'8"
Area: 381 sq. ft
Counted as Living Area: No

Heated: No
Finished: No
Enclosed: Yes
Contiguous: Yes
Permitted: Yes
Wet Space: No
Addition: No
Conversion: No

14506 Rolling Fields Lane, Chesterfield, Chesterfield County, Virginia, United States,

6 Floor 1 - Wc



Dimensions: 5'4" x 6'9"
Area: 36 sq. ft
Counted as Living Area: No

Heated: Yes
Finished: Yes
Enclosed: Yes
Contiguous: Yes
Permitted: Yes
Wet Space: Yes
Addition: No
Conversion: No

7 Floor 1 - Foyer



Dimensions: 7'0" x 5'6"
Area: 39 sq. ft
Counted as Living Area:
Yes

Heated: Yes
Finished: Yes
Enclosed: Yes
Contiguous:
Yes
Permitted: Yes
Wet Space: No
Addition: No
Conversion: No

8 Floor 1 - Dining Room



Dimensions: 10'10" x 11'4"
Area: 123 sq. ft
Counted as Living Area:
Yes

Heated: Yes
Finished: Yes
Enclosed: Yes
Contiguous:
Yes
Permitted: Yes
Wet Space: No
Addition: No
Conversion: No

14506 Rolling Fields Lane, Chesterfield, Chesterfield County, Virginia, United States,

9 Floor 1 - Deck



Dimensions: 11'7" x 11'3"
Area: 121 sq. ft
Counted as Living Area: No

Heated: No
Finished: Yes
Enclosed: No
Contiguous: Yes
Permitted: Yes
Wet Space: No
Addition: No
Conversion: No

10 Floor 1 - Hall



Dimensions: 9'8" x 3'5"
Area: 65 sq. ft
Counted as Living Area: Yes

Heated: Yes
Finished: Yes
Enclosed: Yes
Contiguous: Yes
Permitted: Yes
Wet Space: No
Addition: No
Conversion: No

11 Floor 1 - Breakfast Nook

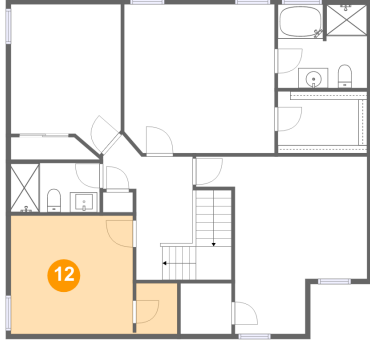


Dimensions: 11'9" x 8'1"
Area: 93 sq. ft
Counted as Living Area: Yes

Heated: Yes
Finished: Yes
Enclosed: Yes
Contiguous: Yes
Permitted: Yes
Wet Space: No
Addition: No
Conversion: No

14506 Rolling Fields Lane, Chesterfield, Chesterfield County, Virginia, United States,

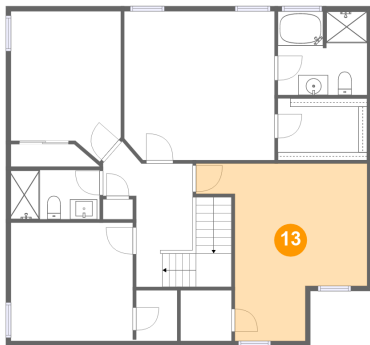
12 Floor 2 - Bedroom



Dimensions: 16'7" x 11'10"
Area: 164 sq. ft
Counted as Living Area:
Yes

Heated: Yes
Finished: Yes
Enclosed: Yes
Contiguous:
Yes
Permitted: Yes
Wet Space: No
Addition: No
Conversion: No

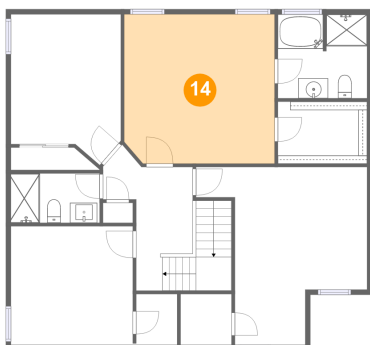
13 Floor 2 - Bedroom



Dimensions: 17'1" x 17'8"
Area: 211 sq. ft
Counted as Living Area:
Yes

Heated: Yes
Finished: Yes
Enclosed: Yes
Contiguous:
Yes
Permitted: Yes
Wet Space: No
Addition: No
Conversion: No

14 Floor 2 - Primary Bedroom



Dimensions: 15'0" x 14'10"
Area: 221 sq. ft
Counted as Living Area:
Yes

Heated: Yes
Finished: Yes
Enclosed: Yes
Contiguous:
Yes
Permitted: Yes
Wet Space: No
Addition: No
Conversion: No

14506 Rolling Fields Lane, Chesterfield, Chesterfield County, Virginia, United States,

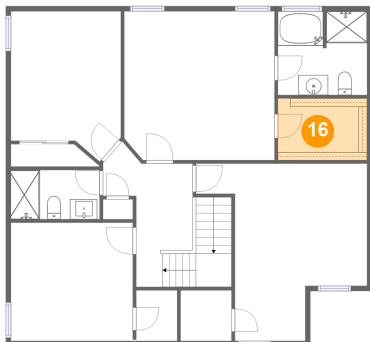
15 Floor 2 - Bath



Dimensions: 8'10" x 4'11"
Area: 44 sq. ft
Counted as Living Area:
Yes

Heated: Yes
Finished: Yes
Enclosed: Yes
Contiguous:
Yes
Permitted: Yes
Wet Space: Yes
Addition: No
Conversion: No

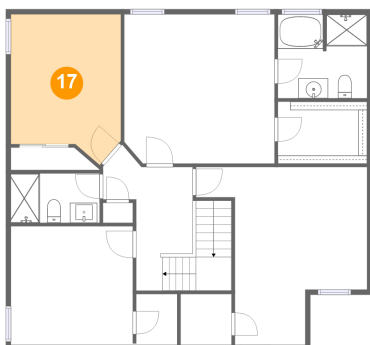
16 Floor 2 - W.i.c.



Dimensions: 8'10" x 6'2"
Area: 55 sq. ft
Counted as Living Area:
Yes

Heated: Yes
Finished: Yes
Enclosed: Yes
Contiguous:
Yes
Permitted: Yes
Wet Space: No
Addition: No
Conversion: No

17 Floor 2 - Bedroom

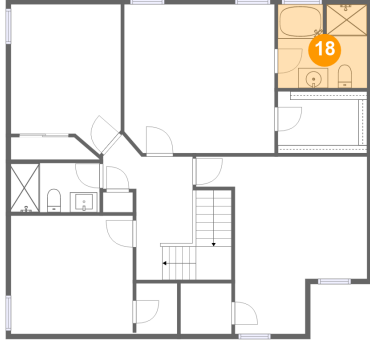


Dimensions: 11'0" x 14'11"
Area: 146 sq. ft
Counted as Living Area:
Yes

Heated: Yes
Finished: Yes
Enclosed: Yes
Contiguous:
Yes
Permitted: Yes
Wet Space: No
Addition: No
Conversion: No

**14506 Rolling Fields Lane, Chesterfield,
Chesterfield County, Virginia, United States,**

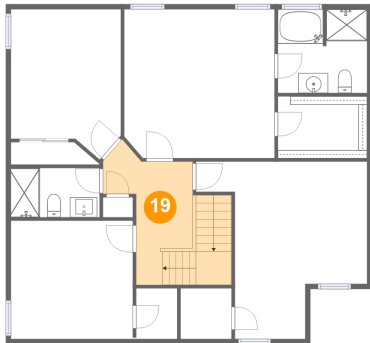
18 Floor 2 - Primary Bath



Dimensions: 8'10" x 8'4"
Area: 73 sq. ft
Counted as Living Area:
Yes

Heated: Yes
Finished: Yes
Enclosed: Yes
Contiguous:
Yes
Permitted: Yes
Wet Space: Yes
Addition: No
Conversion: No

19 Floor 2 - Hall



Dimensions: 5'8" x 12'4"
Area: 119 sq. ft
Counted as Living Area:
Yes

Heated: Yes
Finished: Yes
Enclosed: Yes
Contiguous:
Yes
Permitted: Yes
Wet Space: No
Addition: No
Conversion: No