





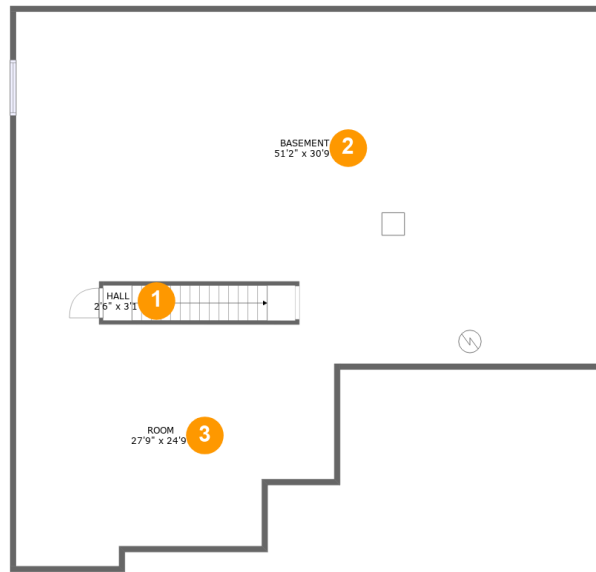
# 1313 Souders Avenue, Elburn, Kane County, Illinois, United States, 60119



## Property Summary

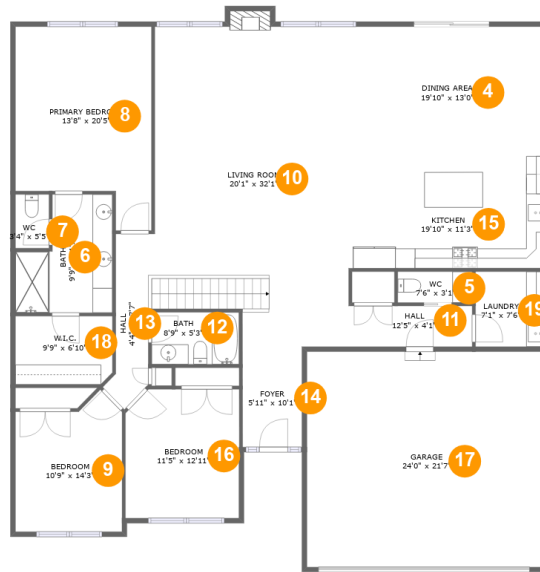
 **1** garages     **3** bedrooms     **2** bathrooms     **1** half baths

 **2** floors     **2,280** Gross Living Area sqft     **4,929** total sqft

**1313 Souders Avenue, Elburn, Kane County,  
Illinois, United States, 60119****Room Dimensions****Floor 1****Total sqft: 2093****Living area: 0**

#	Room name	Dimensions	Area (sqft)	Counted as Living Area
1	Hall	2'6" x 3'1"	52 sq. ft	No
2	Basement	51'2" x 30'9"	1389 sq. ft	No
3	Room	27'9" x 24'9"	538 sq. ft	No

**1313 Souders Avenue, Elburn, Kane County, Illinois, United States, 60119**



**Room Dimensions**

**Floor 2**

**Total sqft: 2836**

**Living area: 2280**

#	Room name	Dimensions	Area (sqft)	Counted as Living Area
4	Dining Area	19'10" x 13'0"	257 sq. ft	Yes
5	Wc	7'6" x 3'1"	23 sq. ft	Yes
6	Bath	9'9" x 11'11"	94 sq. ft	Yes
7	Wc	3'4" x 5'5"	18 sq. ft	Yes
8	Primary Bedroom	13'8" x 20'5"	240 sq. ft	Yes
9	Bedroom	10'9" x 14'3"	134 sq. ft	Yes
10	Living Room	20'1" x 32'1"	603 sq. ft	Yes
11	Hall	12'5" x 4'1"	51 sq. ft	Yes
12	Bath	8'9" x 5'3"	46 sq. ft	Yes
13	Hall	4'4" x 17'7"	56 sq. ft	Yes
14	Foyer	5'11" x 10'1"	60 sq. ft	Yes

Scan captured on Wed, 02 Oct 2024 17:31:19 GMT

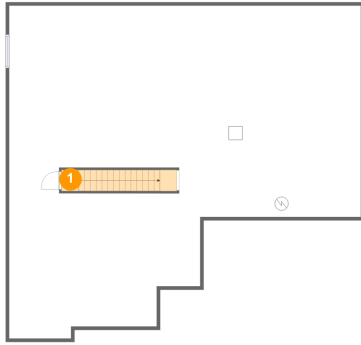
Information is calculated by CubiCasa technology; deemed highly reliable but not guaranteed.

**1313 Souders Avenue, Elburn, Kane County,  
Illinois, United States, 60119**

#	Room name	Dimensions	Area (sqft)	Counted as Living Area
15	Kitchen	19'10" x 11'3"	224 sq. ft	Yes
16	Bedroom	11'5" x 12'11"	145 sq. ft	Yes
17	Garage	24'0" x 21'7"	519 sq. ft	No
18	W.i.c.	9'9" x 6'10"	66 sq. ft	Yes
19	Laundry	7'1" x 7'6"	53 sq. ft	Yes

# 1313 Souders Avenue, Elburn, Kane County, Illinois, United States, 60119

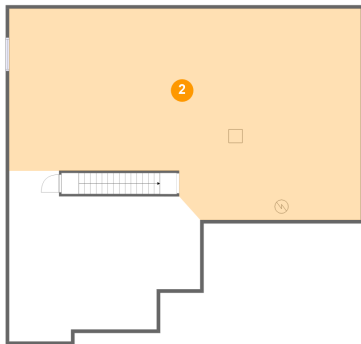
## 1 Floor 1 - Hall



Dimensions: 2'6" x 3'1"  
Area: 52 sq. ft  
Counted as Living Area: No

Heated: Yes  
Finished: Yes  
Enclosed: Yes  
Contiguous: No  
Permitted: Yes  
Wet Space: No  
Addition: No  
Conversion: No

## 2 Floor 1 - Basement

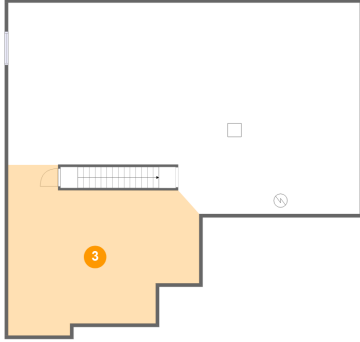


Dimensions: 51'2" x 30'9"  
Area: 1389 sq. ft  
Counted as Living Area: No

Heated: No  
Finished: No  
Enclosed: Yes  
Contiguous: Yes  
Permitted: Yes  
Wet Space: No  
Addition: No  
Conversion: No

**1313 Souders Avenue, Elburn, Kane County,  
Illinois, United States, 60119**

**3 Floor 1 - Room**



Dimensions: 27'9" x 24'9"  
Area: 538 sq. ft  
Counted as Living Area: No

Heated: No  
Finished: No  
Enclosed: Yes  
Contiguous: Yes  
Permitted: Yes  
Wet Space: No  
Addition: No  
Conversion: No

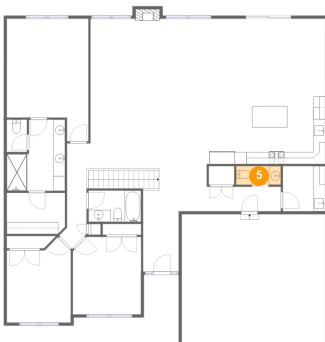
**4 Floor 2 - Dining Area**



Dimensions: 19'10" x 13'0"  
Area: 257 sq. ft  
Counted as Living Area:  
Yes

Heated: Yes  
Finished: Yes  
Enclosed: Yes  
Contiguous:  
Yes  
Permitted: Yes  
Wet Space: No  
Addition: No  
Conversion: No

**5 Floor 2 - Wc**



Dimensions: 7'6" x 3'1"  
Area: 23 sq. ft  
Counted as Living Area:  
Yes

Heated: Yes  
Finished: Yes  
Enclosed: Yes  
Contiguous:  
Yes  
Permitted: Yes  
Wet Space: Yes  
Addition: No  
Conversion: No

**1313 Souders Avenue, Elburn, Kane County,  
Illinois, United States, 60119**

**6 Floor 2 - Bath**



**Dimensions:** 9'9" x 11'11"  
**Area:** 94 sq. ft  
**Counted as Living Area:**  
Yes

**Heated:** Yes  
**Finished:** Yes  
**Enclosed:** Yes  
**Contiguous:**  
Yes  
**Permitted:** Yes  
**Wet Space:** Yes  
**Addition:** No  
**Conversion:** No

**7 Floor 2 - Wc**



**Dimensions:** 3'4" x 5'5"  
**Area:** 18 sq. ft  
**Counted as Living Area:**  
Yes

**Heated:** Yes  
**Finished:** Yes  
**Enclosed:** Yes  
**Contiguous:**  
Yes  
**Permitted:** Yes  
**Wet Space:** Yes  
**Addition:** No  
**Conversion:** No

**8 Floor 2 - Primary Bedroom**



**Dimensions:** 13'8" x 20'5"  
**Area:** 240 sq. ft  
**Counted as Living Area:**  
Yes

**Heated:** Yes  
**Finished:** Yes  
**Enclosed:** Yes  
**Contiguous:**  
Yes  
**Permitted:** Yes  
**Wet Space:** No  
**Addition:** No  
**Conversion:** No

# 1313 Souders Avenue, Elburn, Kane County, Illinois, United States, 60119

## 9 Floor 2 - Bedroom



Dimensions: 10'9" x 14'3"  
Area: 134 sq. ft  
Counted as Living Area:  
Yes

Heated: Yes  
Finished: Yes  
Enclosed: Yes  
Contiguous:  
Yes  
Permitted: Yes  
Wet Space: No  
Addition: No  
Conversion: No

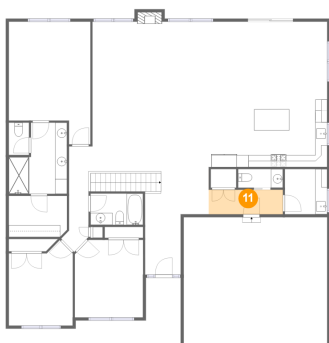
## 10 Floor 2 - Living Room



Dimensions: 20'1" x 32'1"  
Area: 603 sq. ft  
Counted as Living Area:  
Yes

Heated: Yes  
Finished: Yes  
Enclosed: Yes  
Contiguous:  
Yes  
Permitted: Yes  
Wet Space: No  
Addition: No  
Conversion: No

## 11 Floor 2 - Hall



Dimensions: 12'5" x 4'1"  
Area: 51 sq. ft  
Counted as Living Area:  
Yes

Heated: Yes  
Finished: Yes  
Enclosed: Yes  
Contiguous:  
Yes  
Permitted: Yes  
Wet Space: No  
Addition: No  
Conversion: No



# 1313 Souders Avenue, Elburn, Kane County, Illinois, United States, 60119

## 12 Floor 2 - Bath



Dimensions: 8'9" x 5'3"  
Area: 46 sq. ft  
Counted as Living Area:  
Yes

Heated: Yes  
Finished: Yes  
Enclosed: Yes  
Contiguous:  
Yes  
Permitted: Yes  
Wet Space: Yes  
Addition: No  
Conversion: No

## 13 Floor 2 - Hall



Dimensions: 4'4" x 17'7"  
Area: 56 sq. ft  
Counted as Living Area:  
Yes

Heated: Yes  
Finished: Yes  
Enclosed: Yes  
Contiguous:  
Yes  
Permitted: Yes  
Wet Space: No  
Addition: No  
Conversion: No

## 14 Floor 2 - Foyer



Dimensions: 5'11" x 10'1"  
Area: 60 sq. ft  
Counted as Living Area:  
Yes

Heated: Yes  
Finished: Yes  
Enclosed: Yes  
Contiguous:  
Yes  
Permitted: Yes  
Wet Space: No  
Addition: No  
Conversion: No

**1313 Souders Avenue, Elburn, Kane County,  
Illinois, United States, 60119**

**15 Floor 2 - Kitchen**



**Dimensions:** 19'10" x 11'3"  
**Area:** 224 sq. ft  
**Counted as Living Area:**  
Yes

**Heated:** Yes  
**Finished:** Yes  
**Enclosed:** Yes  
**Contiguous:**  
Yes  
**Permitted:** Yes  
**Wet Space:** No  
**Addition:** No  
**Conversion:** No

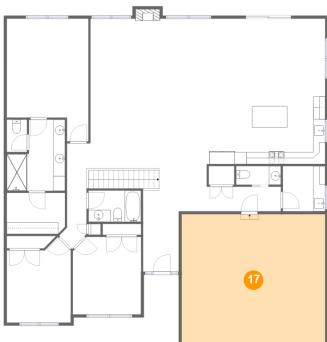
**16 Floor 2 - Bedroom**



**Dimensions:** 11'5" x 12'11"  
**Area:** 145 sq. ft  
**Counted as Living Area:**  
Yes

**Heated:** Yes  
**Finished:** Yes  
**Enclosed:** Yes  
**Contiguous:**  
Yes  
**Permitted:** Yes  
**Wet Space:** No  
**Addition:** No  
**Conversion:** No

**17 Floor 2 - Garage**



**Dimensions:** 24'0" x 21'7"  
**Area:** 519 sq. ft  
**Counted as Living Area:** No

**Heated:** No  
**Finished:** No  
**Enclosed:** Yes  
**Contiguous:** Yes  
**Permitted:** Yes  
**Wet Space:** No  
**Addition:** No  
**Conversion:** No

**1313 Souders Avenue, Elburn, Kane County,  
Illinois, United States, 60119**

**18 Floor 2 - W.i.c.**



Dimensions: 9'9" x 6'10"  
Area: 66 sq. ft  
Counted as Living Area:  
Yes

Heated: Yes  
Finished: Yes  
Enclosed: Yes  
Contiguous:  
Yes  
Permitted: Yes  
Wet Space: No  
Addition: No  
Conversion: No

**19 Floor 2 - Laundry**



Dimensions: 7'1" x 7'6"  
Area: 53 sq. ft  
Counted as Living Area:  
Yes

Heated: Yes  
Finished: Yes  
Enclosed: Yes  
Contiguous:  
Yes  
Permitted: Yes  
Wet Space: No  
Addition: No  
Conversion: No