

Home report

8995 Jubal Early Highway, Roanoke, Roanoke County, Virginia,  
United States, 24101

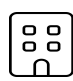


**Total Area: 3461 sq. ft**


Floor 1: 1280 sq. ft, Floor 2: 2181 sq. ft


Excluded: Garage 581 sq. ft, Storage 161 sq. ft, Workshop 180 sq. ft, Porch 84 sq. ft, Fireplace 24 sq. ft, Patio 828 sq. ft, Deck 244 sq. ft, Open to below 83 sq. ft, Walls: 231 sq. ft

Property summary

**2**  
Floors

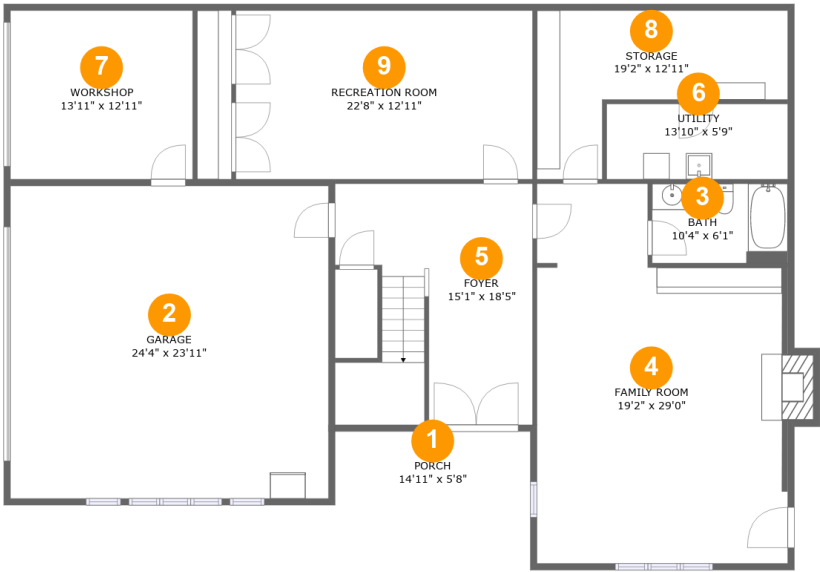
**3**  
Bedrooms

**3**  
Bathrooms

**1**  
Garages

Home report

8995 Jubal Early Highway, Roanoke, Roanoke County, Virginia,  
United States, 24101



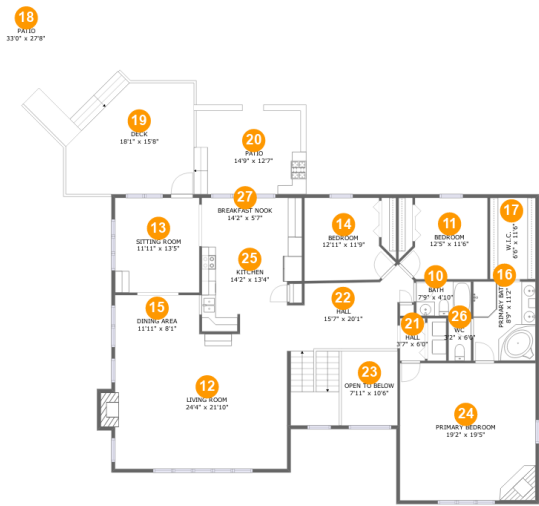
Room dimensions

Floor 1 Total:1280sqft   Excluded: 1018sqft

#		Max Dimensions	sqft	Included
1	Porch	14'11" x 5'8"	84 sq. ft	No
2	Garage	24'4" x 23'11"	581 sq. ft	No
3	Bath	10'4" x 6'1"	63 sq. ft	Yes
4	Family Room	19'2" x 29'0"	497 sq. ft	Yes
5	Foyer	15'1" x 18'5"	248 sq. ft	Yes
6	Utility	13'10" x 5'9"	80 sq. ft	Yes
7	Workshop	13'11" x 12'11"	180 sq. ft	No
8	Storage	19'2" x 12'11"	161 sq. ft	No
9	Recreation Room	22'8" x 12'11"	292 sq. ft	Yes

Home report

8995 Jubal Early Highway, Roanoke, Roanoke County, Virginia,  
United States, 24101



Room dimensions

Floor 2 Total:2181sqft Excluded: 1167sqft

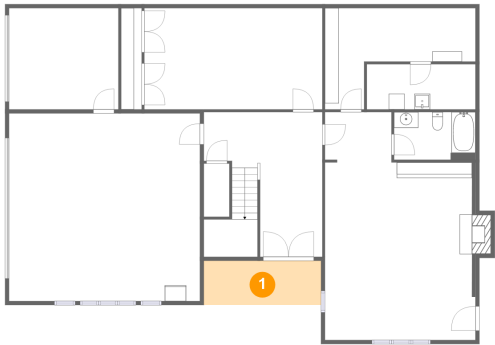
#		Max Dimensions	sqft	Included
10	Bath	7'9" x 4'10"	37 sq. ft	Yes
11	Bedroom	12'5" x 11'6"	123 sq. ft	Yes
12	Living Room	24'4" x 21'10"	461 sq. ft	Yes
13	Sitting Room	11'11" x 13'5"	159 sq. ft	Yes
14	Bedroom	12'11" x 11'9"	129 sq. ft	Yes
15	Dining Area	11'11" x 8'1"	96 sq. ft	Yes
16	Primary Bath	8'9" x 11'2"	98 sq. ft	Yes
17	W.I.C.	6'6" x 11'6"	74 sq. ft	Yes
18	Patio	33'0" x 27'8"	645 sq. ft	No
19	Deck	18'1" x 15'8"	244 sq. ft	No
20	Patio	14'9" x 12'7"	183 sq. ft	No

## Home report

**8995 Jubal Early Highway, Roanoke, Roanoke County, Virginia,  
United States, 24101**

#		Max Dimensions	sqft	Included
21	Hall	3'7" x 6'0"	21 sq. ft	Yes
22	Hall	15'7" x 20'1"	231 sq. ft	Yes
23	Open To Below	7'11" x 10'6"	83 sq. ft	No
24	Primary Bedroom	19'2" x 19'5"	372 sq. ft	Yes
25	Kitchen	14'2" x 13'4"	158 sq. ft	Yes
26	WC	3'2" x 6'0"	19 sq. ft	Yes
27	Breakfast Nook	14'2" x 5'7"	79 sq. ft	Yes

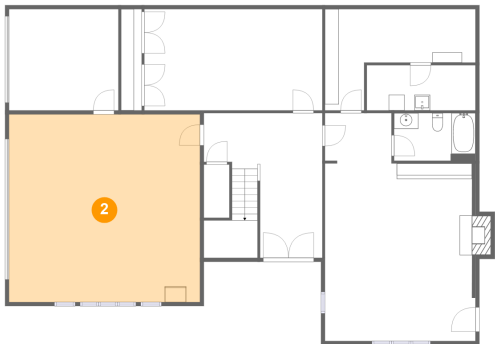
1 Floor 1 - Porch



Max Dimensions: 14'11" x 5'8"  
Calculated Area: 84 sq. ft  
Included: No

Heated: No  
Finished: Yes  
Enclosed: No  
Contiguous: Yes  
Permitted: Yes  
Wet space: No  
Addition: No  
Conversion: No

2 Floor 1 - Garage



Max Dimensions: 24'4" x 23'11"  
Calculated Area: 581 sq. ft  
Included: No

Heated: No  
Finished: No  
Enclosed: Yes  
Contiguous: Yes  
Permitted: Yes  
Wet space: No  
Addition: No  
Conversion: No

8995 Jubal Early Highway, Roanoke, Roanoke County, Virginia,  
United States, 24101

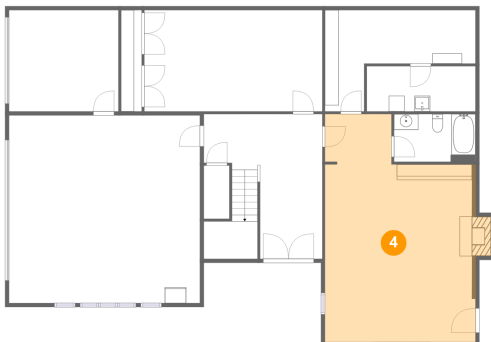
### 3 Floor 1 - Bath



Max Dimensions: 10'4" x 6'1"  
Calculated Area: 63 sq. ft  
Included: Yes

Heated: Yes  
Finished: Yes  
Enclosed: Yes  
Contiguous: Yes  
Permitted: Yes  
Wet space: Yes  
Addition: No  
Conversion: No

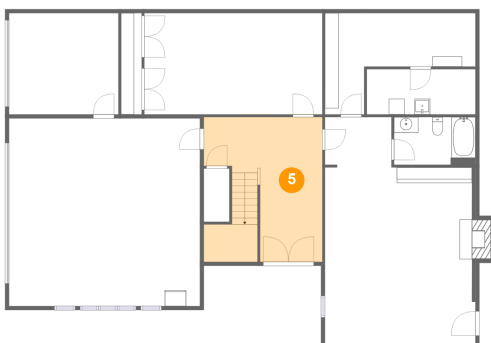
### 4 Floor 1 - Family Room



Max Dimensions: 19'2" x 29'0"  
Calculated Area: 497 sq. ft  
Included: Yes

Heated: Yes  
Finished: Yes  
Enclosed: Yes  
Contiguous: Yes  
Permitted: Yes  
Wet space: No  
Addition: No  
Conversion: No

### 5 Floor 1 - Foyer



Max Dimensions: 15'1" x 18'5"  
Calculated Area: 248 sq. ft  
Included: Yes

Heated: Yes  
Finished: Yes  
Enclosed: Yes  
Contiguous: Yes  
Permitted: Yes  
Wet space: No  
Addition: No  
Conversion: No

8995 Jubal Early Highway, Roanoke, Roanoke County, Virginia,  
United States, 24101

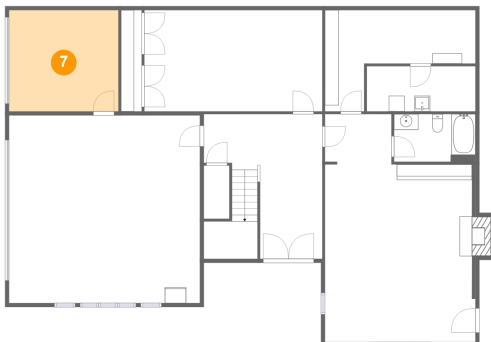
## 6 Floor 1 - Utility



Max Dimensions: 13'10" x 5'9"  
Calculated Area: 80 sq. ft  
Included: No

Heated: Yes  
Finished: Yes  
Enclosed: Yes  
Contiguous: No  
Permitted: Yes  
Wet space: No  
Addition: No  
Conversion: No

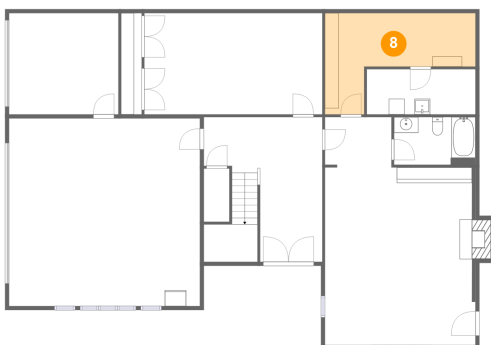
## 7 Floor 1 - Workshop



Max Dimensions: 13'11" x 12'11"  
Calculated Area: 180 sq. ft  
Included: No

Heated: No  
Finished: No  
Enclosed: Yes  
Contiguous: Yes  
Permitted: Yes  
Wet space: No  
Addition: No  
Conversion: No

## 8 Floor 1 - Storage

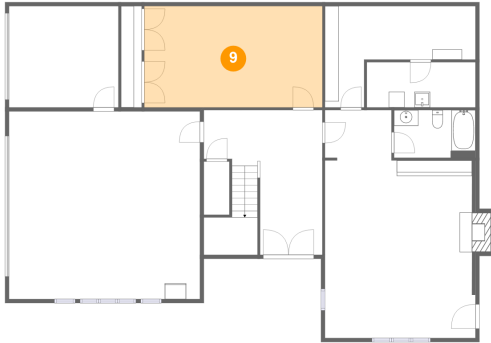


Max Dimensions: 19'2" x 12'11"  
Calculated Area: 161 sq. ft  
Included: No

Heated: No  
Finished: No  
Enclosed: No  
Contiguous: Yes  
Permitted: Yes  
Wet space: No  
Addition: No  
Conversion: No

8995 Jubal Early Highway, Roanoke, Roanoke County, Virginia,  
United States, 24101

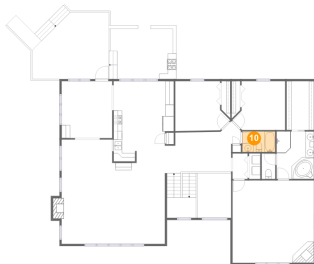
## 9 Floor 1 - Recreation Room



Max Dimensions: 22'8" x 12'11"  
Calculated Area: 292 sq. ft  
Included: Yes

Heated: Yes  
Finished: Yes  
Enclosed: Yes  
Contiguous: Yes  
Permitted: Yes  
Wet space: No  
Addition: No  
Conversion: No

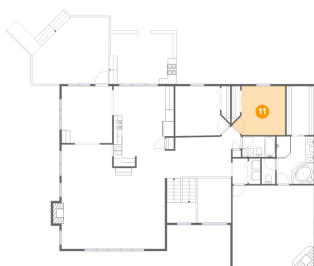
## 10 Floor 2 - Bath



Max Dimensions: 7'9" x 4'10"  
Calculated Area: 37 sq. ft  
Included: Yes

Heated: Yes  
Finished: Yes  
Enclosed: Yes  
Contiguous: Yes  
Permitted: Yes  
Wet space: Yes  
Addition: No  
Conversion: No

## 11 Floor 2 - Bedroom



Max Dimensions: 12'5" x 11'6"  
Calculated Area: 123 sq. ft  
Included: Yes

Heated: Yes  
Finished: Yes  
Enclosed: Yes  
Contiguous: Yes  
Permitted: Yes  
Wet space: No  
Addition: No  
Conversion: No

12 Floor 2 - Living Room



Max Dimensions: 24'4" x 21'10"  
Calculated Area: 461 sq. ft  
Included: Yes

Heated: Yes  
Finished: Yes  
Enclosed: Yes  
Contiguous: Yes  
Permitted: Yes  
Wet space: No  
Addition: No  
Conversion: No

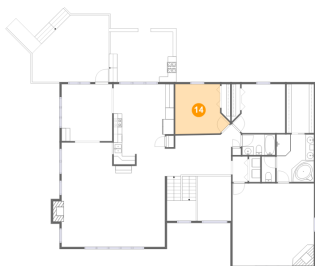
13 Floor 2 - Sitting Room



Max Dimensions: 11'11" x 13'5"  
Calculated Area: 159 sq. ft  
Included: Yes

Heated: Yes  
Finished: Yes  
Enclosed: Yes  
Contiguous: Yes  
Permitted: Yes  
Wet space: No  
Addition: No  
Conversion: No

14 Floor 2 - Bedroom



Max Dimensions: 12'11" x 11'9"  
Calculated Area: 129 sq. ft  
Included: Yes

Heated: Yes  
Finished: Yes  
Enclosed: Yes  
Contiguous: Yes  
Permitted: Yes  
Wet space: No  
Addition: No  
Conversion: No

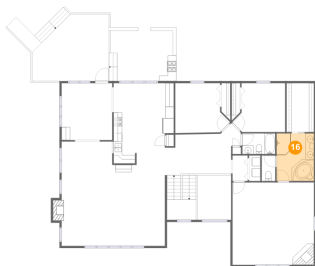
15 Floor 2 - Dining Area



Max Dimensions: 11'11" x 8'1"  
Calculated Area: 96 sq. ft  
Included: Yes

Heated: Yes  
Finished: Yes  
Enclosed: Yes  
Contiguous: Yes  
Permitted: Yes  
Wet space: No  
Addition: No  
Conversion: No

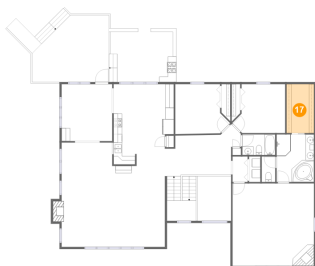
16 Floor 2 - Primary Bath



Max Dimensions: 8'9" x 11'2"  
Calculated Area: 98 sq. ft  
Included: Yes

Heated: Yes  
Finished: Yes  
Enclosed: Yes  
Contiguous: Yes  
Permitted: Yes  
Wet space: Yes  
Addition: No  
Conversion: No

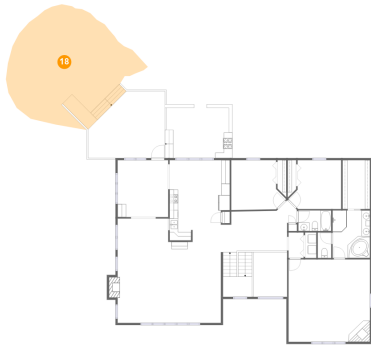
17 Floor 2 - W.I.C.



Max Dimensions: 6'6" x 11'6"  
Calculated Area: 74 sq. ft  
Included: Yes

Heated: Yes  
Finished: Yes  
Enclosed: Yes  
Contiguous: Yes  
Permitted: Yes  
Wet space: No  
Addition: No  
Conversion: No

18 Floor 2 - Patio



Max Dimensions: 33'0" x 27'8"  
Calculated Area: 645 sq. ft  
Included: No

Heated: No  
Finished: Yes  
Enclosed: No  
Contiguous: Yes  
Permitted: Yes  
Wet space: No  
Addition: No  
Conversion: No

19 Floor 2 - Deck



Max Dimensions: 18'1" x 15'8"  
Calculated Area: 244 sq. ft  
Included: No

Heated: No  
Finished: Yes  
Enclosed: No  
Contiguous: Yes  
Permitted: Yes  
Wet space: No  
Addition: No  
Conversion: No

20 Floor 2 - Patio



Max Dimensions: 14'9" x 12'7"  
Calculated Area: 183 sq. ft  
Included: No

Heated: No  
Finished: Yes  
Enclosed: No  
Contiguous: Yes  
Permitted: Yes  
Wet space: No  
Addition: No  
Conversion: No

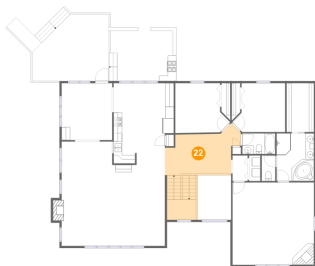
21 Floor 2 - Hall



Max Dimensions: 3'7" x 6'0"  
Calculated Area: 21 sq. ft  
Included: Yes

Heated: Yes  
Finished: Yes  
Enclosed: Yes  
Contiguous: Yes  
Permitted: Yes  
Wet space: No  
Addition: No  
Conversion: No

22 Floor 2 - Hall



Max Dimensions: 15'7" x 20'1"  
Calculated Area: 231 sq. ft  
Included: Yes

Heated: Yes  
Finished: Yes  
Enclosed: Yes  
Contiguous: Yes  
Permitted: Yes  
Wet space: No  
Addition: No  
Conversion: No

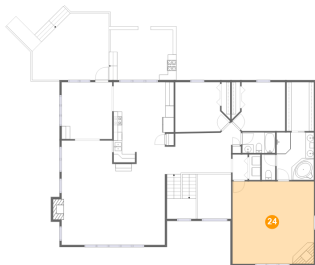
23 Floor 2 - Open To Below



Max Dimensions: 7'11" x 10'6"  
Calculated Area: 83 sq. ft  
Included: No

Heated: No  
Finished: No  
Enclosed: No  
Contiguous: Yes  
Permitted: No  
Wet space: No  
Addition: No  
Conversion: No

24 Floor 2 - Primary Bedroom



Max Dimensions: 19'2" x 19'5"  
Calculated Area: 372 sq. ft  
Included: Yes

Heated: Yes  
Finished: Yes  
Enclosed: Yes  
Contiguous: Yes  
Permitted: Yes  
Wet space: No  
Addition: No  
Conversion: No

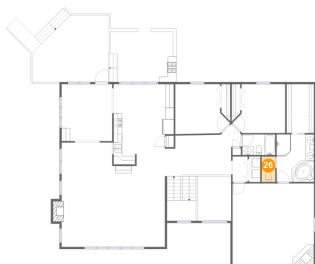
25 Floor 2 - Kitchen



Max Dimensions: 14'2" x 13'4"  
Calculated Area: 158 sq. ft  
Included: Yes

Heated: Yes  
Finished: Yes  
Enclosed: Yes  
Contiguous: Yes  
Permitted: Yes  
Wet space: No  
Addition: No  
Conversion: No

26 Floor 2 - WC



Max Dimensions: 3'2" x 6'0"  
Calculated Area: 19 sq. ft  
Included: Yes

Heated: Yes  
Finished: Yes  
Enclosed: Yes  
Contiguous: Yes  
Permitted: Yes  
Wet space: No  
Addition: No  
Conversion: No

8995 Jubal Early Highway, Roanoke, Roanoke County, Virginia,  
United States, 24101

**27** Floor 2 - Breakfast Nook

---



Max Dimensions: 14'2" x 5'7"  
Calculated Area: 79 sq. ft  
Included: Yes

Heated: Yes  
Finished: Yes  
Enclosed: Yes  
Contiguous: Yes  
Permitted: Yes  
Wet space: No  
Addition: No  
Conversion: No