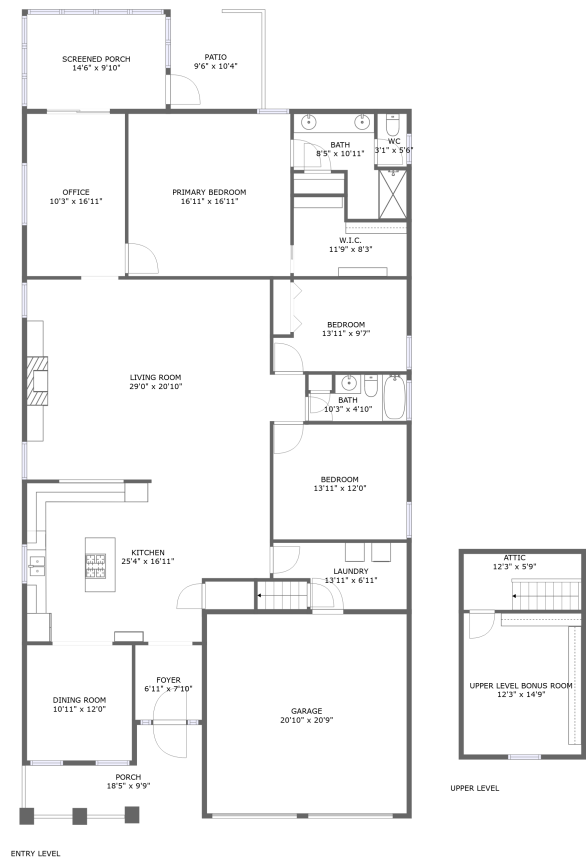


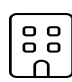
Home report

7027 Mountain Spring Trail, Roanoke, Roanoke County, Virginia,  
United States, 24018



**Total Area: 2407 sq. ft**  
Floor 1: 2407 sq. ft, Floor 2: 0 sq. ft  
Excluded: Garage 458 sq. ft, Outdoor Porch Screen 160 sq. ft, Outdoor Porch 127 sq. ft, Outdoor Patio 97 sq. ft, Upper Level Bonus Room 207 sq. ft, Attic 85 sq. ft

Property summary

 **2** Floors

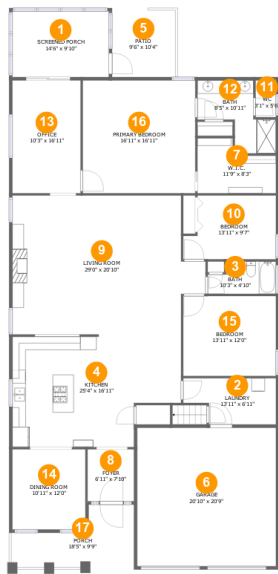
 **3** Bedrooms

 **2** Bathrooms

 **1** Garages

Home report

7027 Mountain Spring Trail, Roanoke, Roanoke County, Virginia,  
United States, 24018



Room dimensions

Floor 1 Total:2407sqft    Excluded: 842sqft

#		Max Dimensions	sqft	Included
1	Screened Porch	14'6" x 9'10"	143 sq. ft	No
2	Laundry	13'11" x 6'11"	84 sq. ft	Yes
3	Bath	10'3" x 4'10"	44 sq. ft	Yes
4	Kitchen	25'4" x 16'11"	380 sq. ft	Yes
5	Patio	9'6" x 10'4"	97 sq. ft	No
6	Garage	20'10" x 20'9"	433 sq. ft	No
7	W.I.C.	11'9" x 8'3"	80 sq. ft	Yes
8	Foyer	6'11" x 7'10"	54 sq. ft	Yes
9	Living Room	29'0" x 20'10"	546 sq. ft	Yes
10	Bedroom	13'11" x 9'7"	120 sq. ft	Yes
11	WC	3'1" x 5'6"	17 sq. ft	Yes

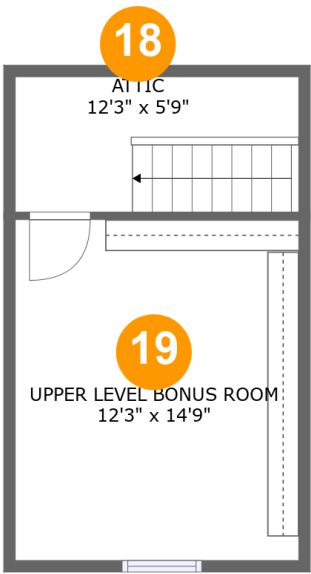
## Home report

**7027 Mountain Spring Trail, Roanoke, Roanoke County, Virginia,  
United States, 24018**

#		Max Dimensions	sqft	Included
12	Bath	8'5" x 10'11"	81 sq. ft	Yes
13	Office	10'3" x 16'11"	173 sq. ft	Yes
14	Dining Room	10'11" x 12'0"	132 sq. ft	Yes
15	Bedroom	13'11" x 12'0"	167 sq. ft	Yes
16	Primary Bedroom	16'11" x 16'11"	286 sq. ft	Yes
17	Porch	18'5" x 9'9"	127 sq. ft	No

Home report

7027 Mountain Spring Trail, Roanoke, Roanoke County, Virginia,  
United States, 24018



Room dimensions

Floor 2 Total:0sqft    Excluded: 292sqft

#		Max Dimensions	sqft	Included
18	Attic	12'3" x 5'9"	72 sq. ft	No
19	Upper Level Bonus Room	12'3" x 14'9"	181 sq. ft	No

1 Floor 1 - Screened Porch



Max Dimensions: 14'6" x 9'10"  
Calculated Area: 143 sq. ft  
Included: No

Heated: No  
Finished: Yes  
Enclosed: No  
Contiguous: Yes  
Permitted: Yes  
Wet space: No  
Addition: No  
Conversion: No

2 Floor 1 - Laundry



Max Dimensions: 13'11" x 6'11"  
Calculated Area: 84 sq. ft  
Included: Yes

Heated: Yes  
Finished: Yes  
Enclosed: Yes  
Contiguous: Yes  
Permitted: Yes  
Wet space: No  
Addition: No  
Conversion: No

3 Floor 1 - Bath



Max Dimensions: 10'3" x 4'10"  
Calculated Area: 44 sq. ft  
Included: Yes

Heated: Yes  
Finished: Yes  
Enclosed: Yes  
Contiguous: Yes  
Permitted: Yes  
Wet space: Yes  
Addition: No  
Conversion: No

4 Floor 1 - Kitchen



Max Dimensions: 25'4" x 16'11"  
Calculated Area: 380 sq. ft  
Included: Yes

Heated: Yes  
Finished: Yes  
Enclosed: Yes  
Contiguous: Yes  
Permitted: Yes  
Wet space: No  
Addition: No  
Conversion: No

5 Floor 1 - Patio



Max Dimensions: 9'6" x 10'4"  
Calculated Area: 97 sq. ft  
Included: No

Heated: No  
Finished: Yes  
Enclosed: No  
Contiguous: Yes  
Permitted: Yes  
Wet space: No  
Addition: No  
Conversion: No

6 Floor 1 - Garage



Max Dimensions: 20'10" x 20'9"  
Calculated Area: 433 sq. ft  
Included: No

Heated: No  
Finished: No  
Enclosed: Yes  
Contiguous: Yes  
Permitted: Yes  
Wet space: No  
Addition: No  
Conversion: No

7 Floor 1 - W.I.C.



Max Dimensions: 11'9" x 8'3"  
Calculated Area: 80 sq. ft  
Included: Yes

Heated: Yes  
Finished: Yes  
Enclosed: Yes  
Contiguous: Yes  
Permitted: Yes  
Wet space: No  
Addition: No  
Conversion: No

8 Floor 1 - Foyer



Max Dimensions: 6'11" x 7'10"  
Calculated Area: 54 sq. ft  
Included: Yes

Heated: Yes  
Finished: Yes  
Enclosed: Yes  
Contiguous: Yes  
Permitted: Yes  
Wet space: No  
Addition: No  
Conversion: No

7027 Mountain Spring Trail, Roanoke, Roanoke County, Virginia,  
United States, 24018

9 Floor 1 - Living Room



Max Dimensions: 29'0" x 20'10"  
Calculated Area: 546 sq. ft  
Included: Yes

Heated: Yes  
Finished: Yes  
Enclosed: Yes  
Contiguous: Yes  
Permitted: Yes  
Wet space: No  
Addition: No  
Conversion: No

10 Floor 1 - Bedroom



Max Dimensions: 13'11" x 9'7"  
Calculated Area: 120 sq. ft  
Included: Yes

Heated: Yes  
Finished: Yes  
Enclosed: Yes  
Contiguous: Yes  
Permitted: Yes  
Wet space: No  
Addition: No  
Conversion: No

11 Floor 1 - WC



Max Dimensions: 3'1" x 5'6"  
Calculated Area: 17 sq. ft  
Included: Yes

Heated: Yes  
Finished: Yes  
Enclosed: Yes  
Contiguous: Yes  
Permitted: Yes  
Wet space: Yes  
Addition: No  
Conversion: No



12 Floor 1 - Bath



Max Dimensions: 8'5" x 10'11"  
Calculated Area: 81 sq. ft  
Included: Yes

Heated: Yes  
Finished: Yes  
Enclosed: Yes  
Contiguous: Yes  
Permitted: Yes  
Wet space: Yes  
Addition: No  
Conversion: No

13 Floor 1 - Office



Max Dimensions: 10'3" x 16'11"  
Calculated Area: 173 sq. ft  
Included: Yes

Heated: Yes  
Finished: Yes  
Enclosed: Yes  
Contiguous: Yes  
Permitted: Yes  
Wet space: No  
Addition: No  
Conversion: No

14 Floor 1 - Dining Room



Max Dimensions: 10'11" x 12'0"  
Calculated Area: 132 sq. ft  
Included: Yes

Heated: Yes  
Finished: Yes  
Enclosed: Yes  
Contiguous: Yes  
Permitted: Yes  
Wet space: No  
Addition: No  
Conversion: No

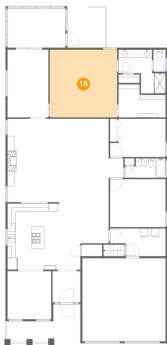
15 Floor 1 - Bedroom



Max Dimensions: 13'11" x 12'0"  
Calculated Area: 167 sq. ft  
Included: Yes

Heated: Yes  
Finished: Yes  
Enclosed: Yes  
Contiguous: Yes  
Permitted: Yes  
Wet space: No  
Addition: No  
Conversion: No

16 Floor 1 - Primary Bedroom



Max Dimensions: 16'11" x 16'11"  
Calculated Area: 286 sq. ft  
Included: Yes

Heated: Yes  
Finished: Yes  
Enclosed: Yes  
Contiguous: Yes  
Permitted: Yes  
Wet space: No  
Addition: No  
Conversion: No

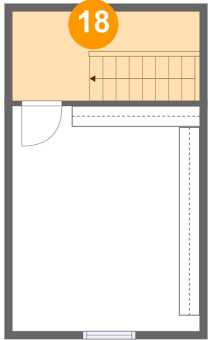
17 Floor 1 - Porch



Max Dimensions: 18'5" x 9'9"  
Calculated Area: 127 sq. ft  
Included: No

Heated: No  
Finished: Yes  
Enclosed: No  
Contiguous: Yes  
Permitted: Yes  
Wet space: No  
Addition: No  
Conversion: No

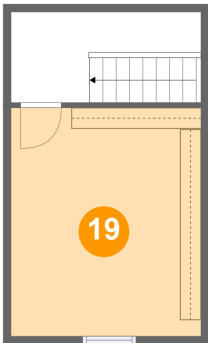
18 Floor 2 - Attic



Max Dimensions: 12'3" x 5'9"  
Calculated Area: 72 sq. ft  
Included: No

Heated: No  
Finished: No  
Enclosed: Yes  
Contiguous: No  
Permitted: Yes  
Wet space: No  
Addition: No  
Conversion: No

19 Floor 2 - Upper Level Bonus Room



Max Dimensions: 12'3" x 14'9"  
Calculated Area: 181 sq. ft  
Included: No

Heated: Yes  
Finished: Yes  
Enclosed: Yes  
Contiguous: No  
Permitted: Yes  
Wet space: No  
Addition: No  
Conversion: No