

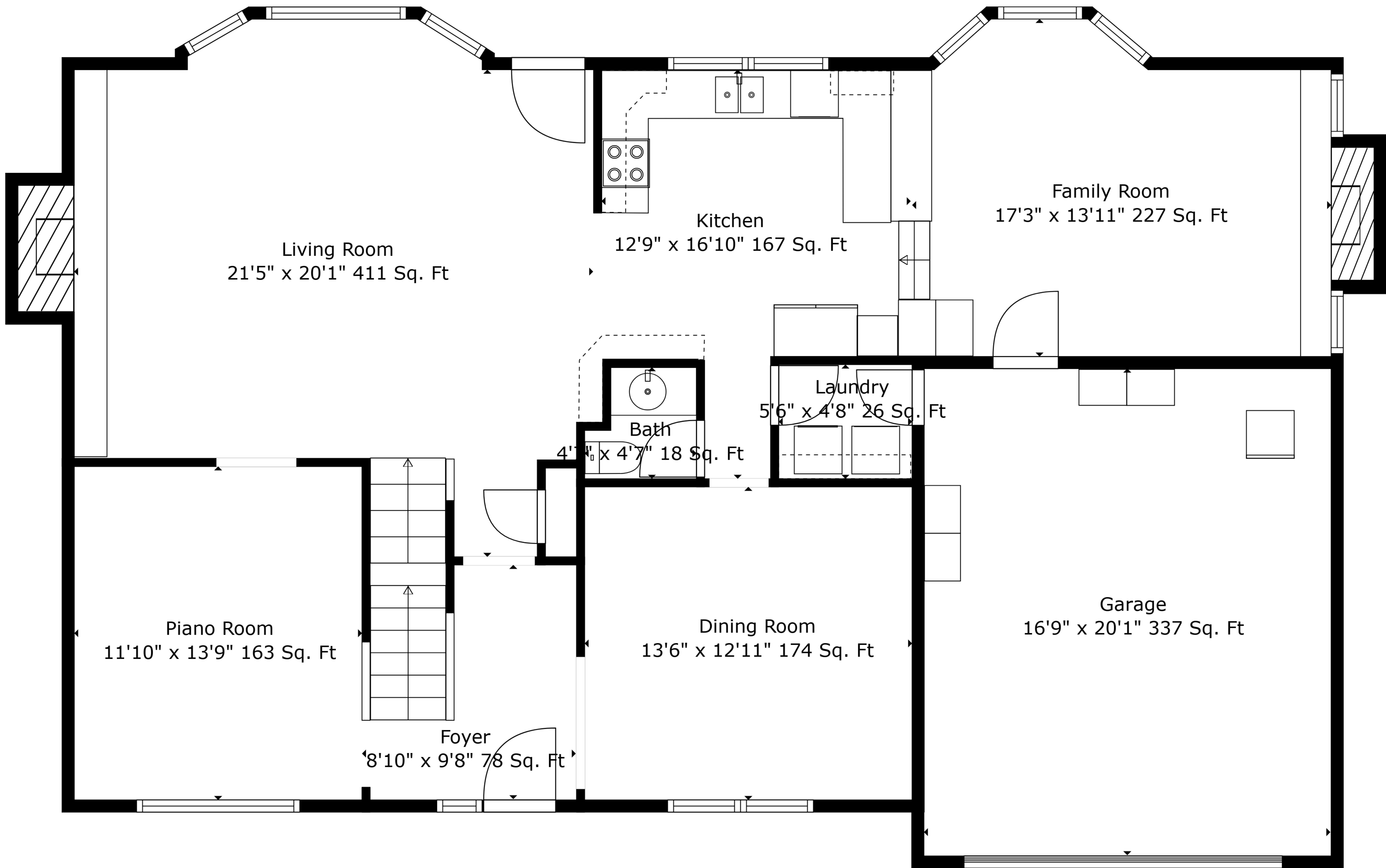
Recreation Room
20'4" x 30'1" 497 Sq. Ft

Storage
13'10" x 7'11" 110 Sq. Ft

Basement
18'11" x 21'10" 375 Sq. Ft

TOTAL: 3283 sq. ft
BELOW GROUND: 548 sq. ft, FLOOR 2: 1294 sq. ft, FLOOR 3: 1441 sq. ft
EXCLUDED AREAS: STORAGE: 115 sq. ft, BASEMENT: 375 sq. ft, GARAGE: 337 sq. ft,
FIREPLACE: 12 sq. ft

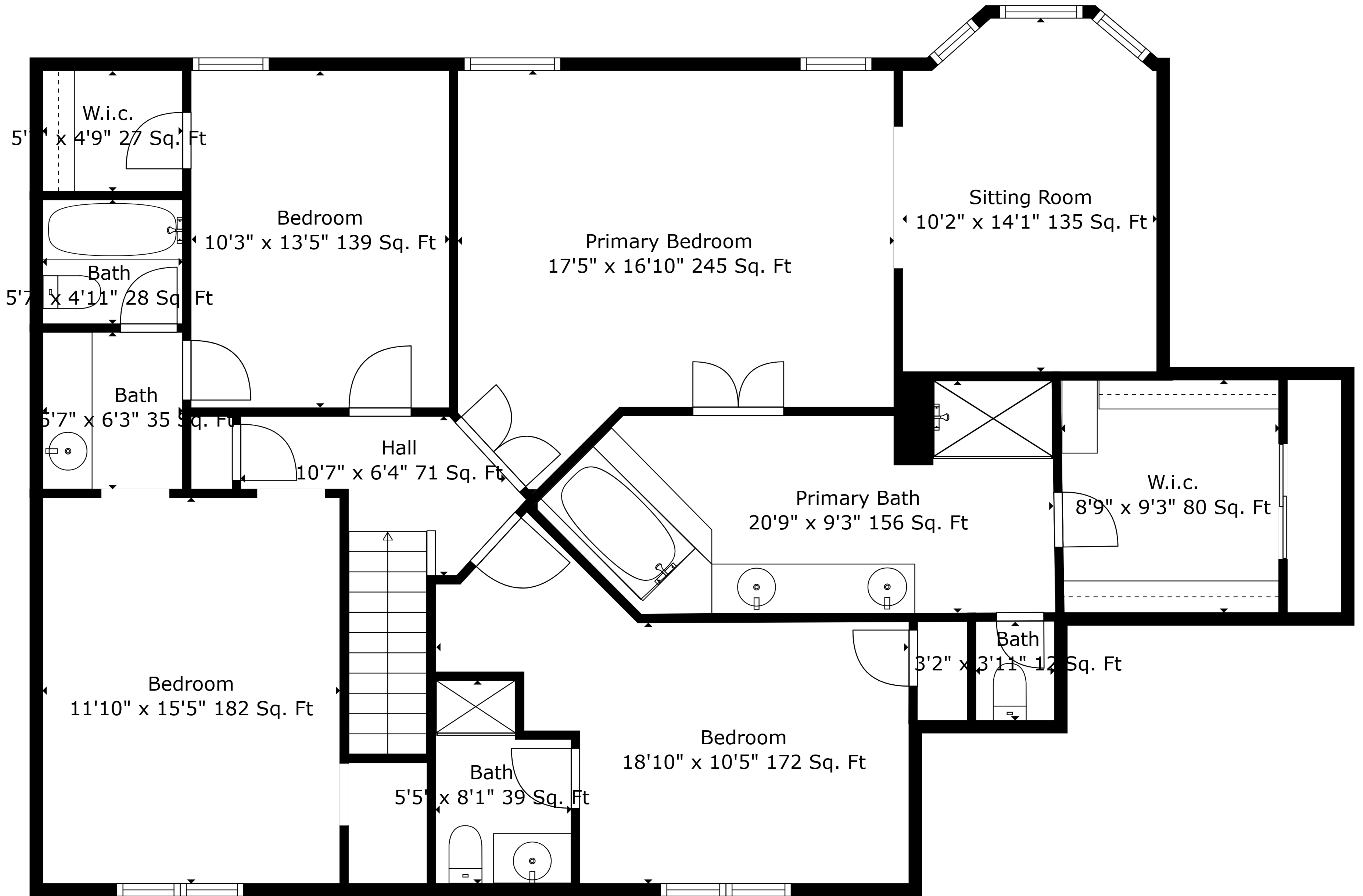
Measurements Are Deemed Highly Reliable But Not Guaranteed.



TOTAL: 3283 sq. ft

BELOW GROUND: 548 sq. ft, FLOOR 2: 1294 sq. ft, FLOOR 3: 1441 sq. ft
 EXCLUDED AREAS: STORAGE: 115 sq. ft, BASEMENT: 375 sq. ft, GARAGE: 337 sq. ft,
 FIREPLACE: 12 sq. ft

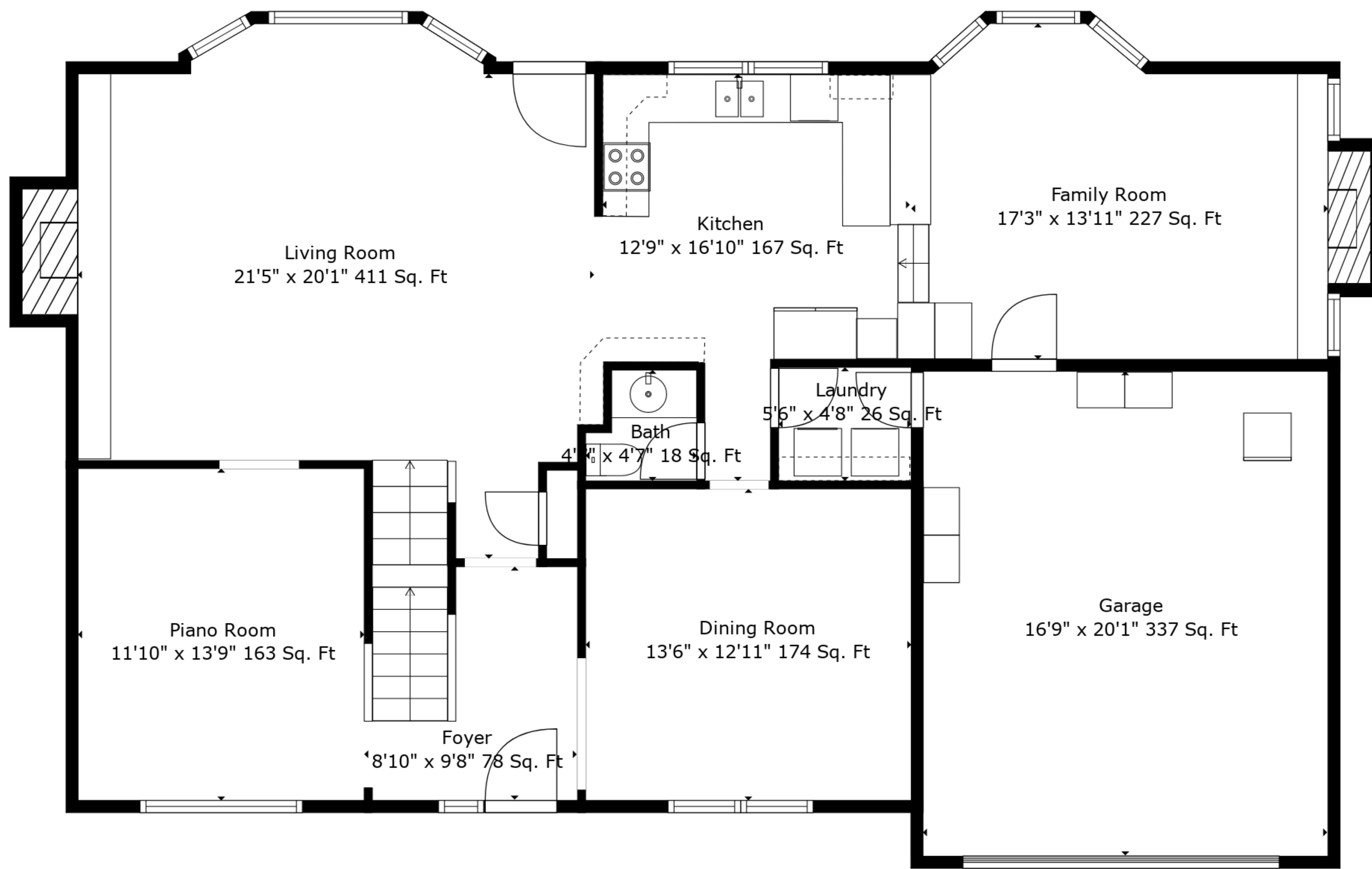
Measurements Are Deemed Highly Reliable But Not Guaranteed.



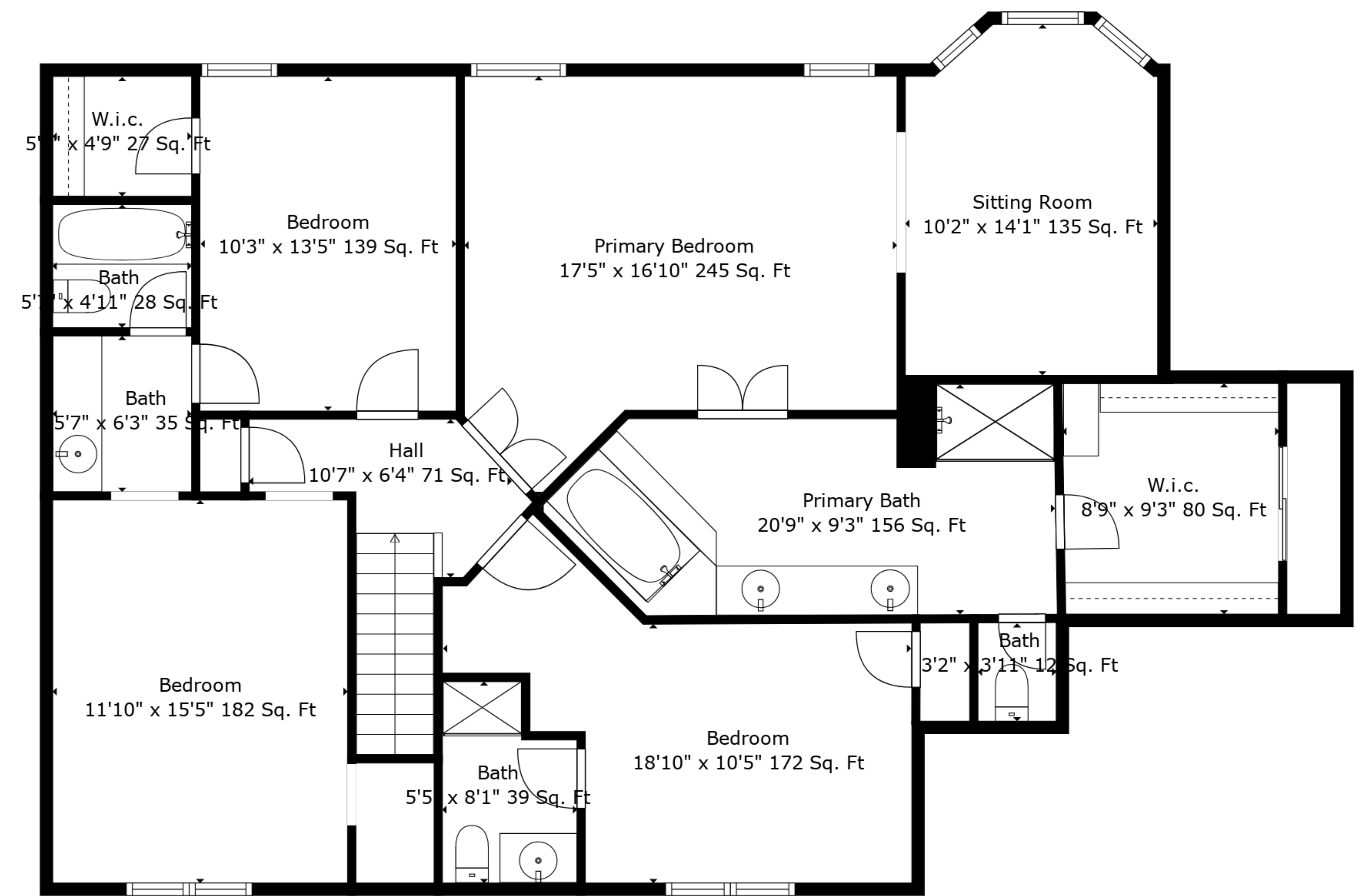
TOTAL: 3283 sq. ft

BELOW GROUND: 548 sq. ft, FLOOR 2: 1294 sq. ft, FLOOR 3: 1441 sq. ft
 EXCLUDED AREAS: STORAGE: 115 sq. ft, BASEMENT: 375 sq. ft, GARAGE: 337 sq. ft,
 FIREPLACE: 12 sq. ft

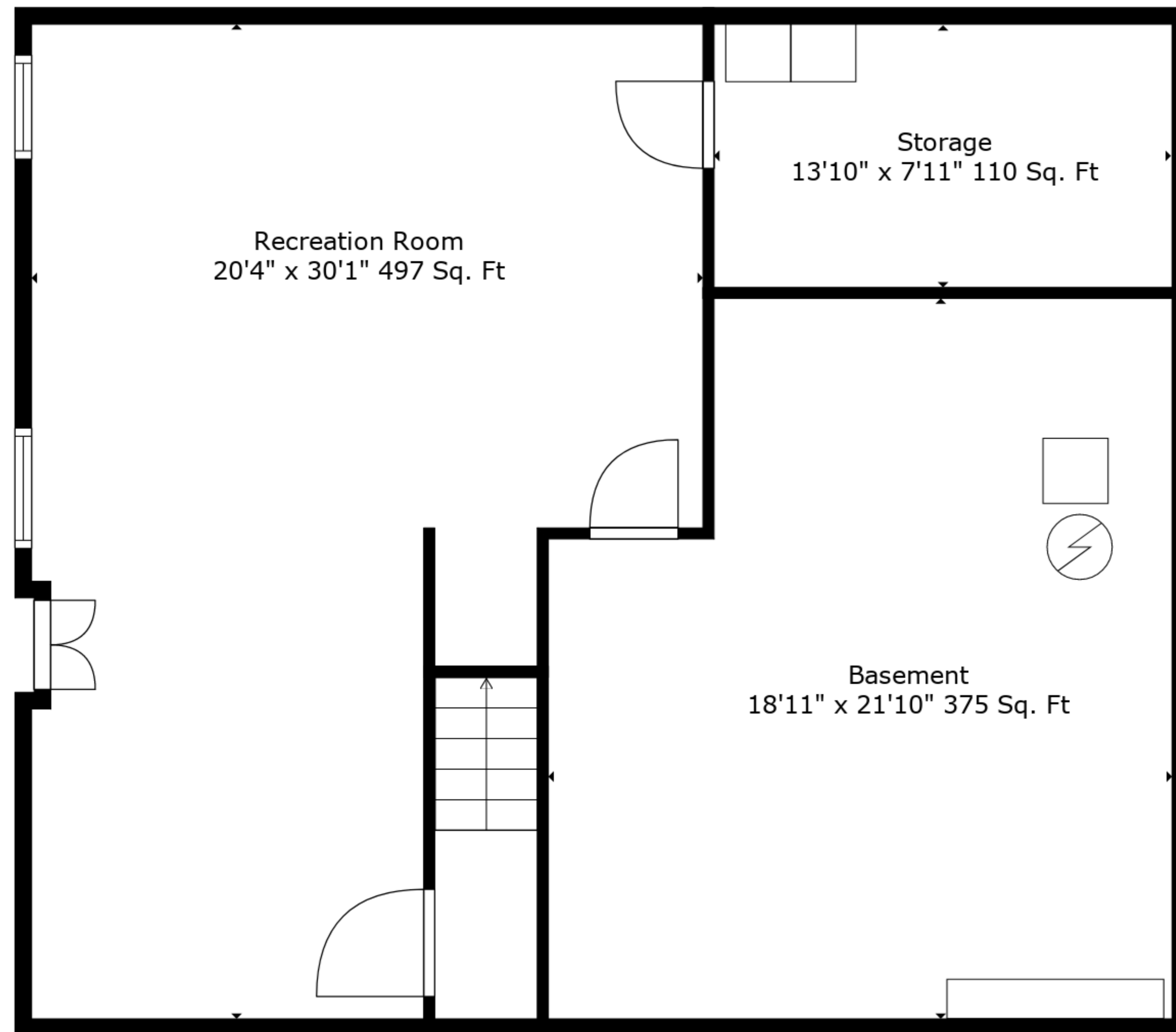
Measurements Are Deemed Highly Reliable But Not Guaranteed.



Floor 2



Floor 3



Floor 1

TOTAL: 3283 sq. ft
 BELOW GROUND: 548 sq. ft, FLOOR 2: 1294 sq. ft, FLOOR 3: 1441 sq. ft
 EXCLUDED AREAS: STORAGE: 115 sq. ft, BASEMENT: 375 sq. ft, GARAGE: 337 sq. ft,
 FIREPLACE: 12 sq. ft

Measurements Are Deemed Highly Reliable But Not Guaranteed.