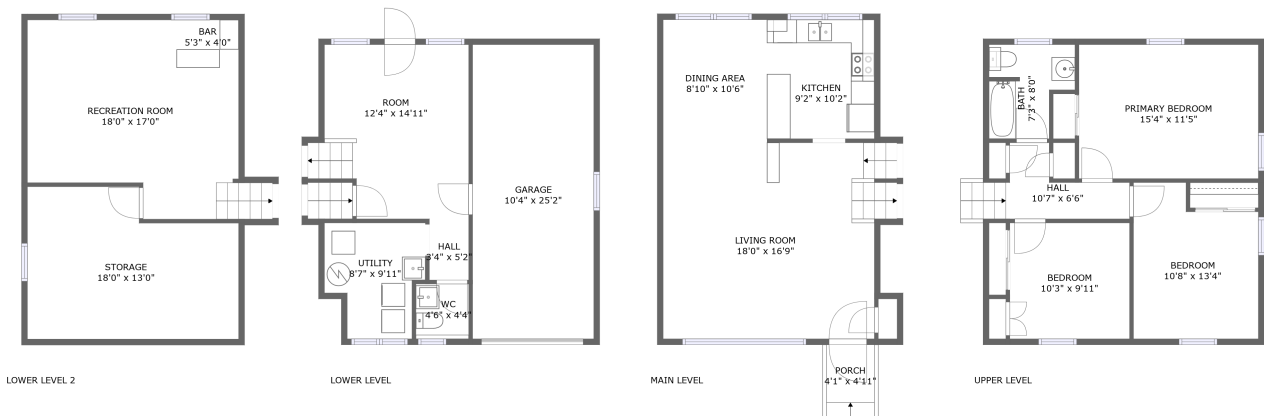




418 East Elm Street, Lebanon, Lebanon County,  
Pennsylvania, United States, 17042



## Property summary

 **1** Garages

 **3** Bedrooms

 **1** Bathrooms

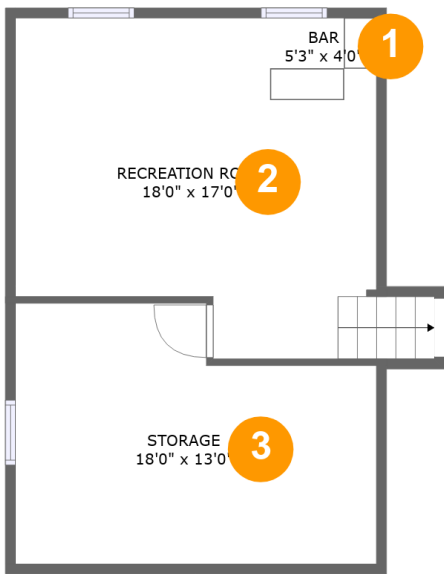
 **1** Half baths

 **4** Floors

 **1,529**  
Gross living  
area sqft

 **2,382**  
Total sqft

418 East Elm Street, Lebanon, Lebanon County,  
Pennsylvania, United States, 17042



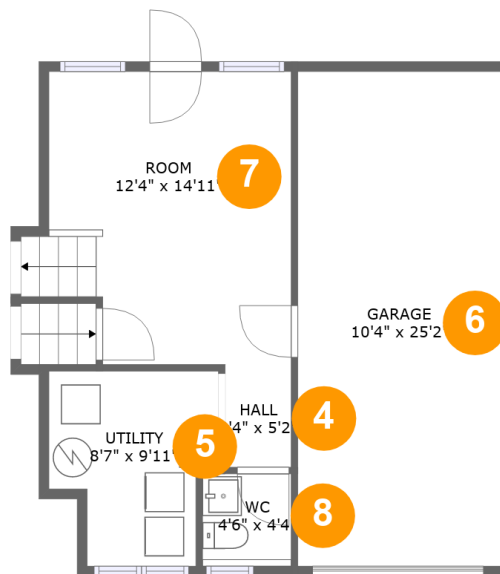
Room dimensions

Floor 1

Total sqft: 550    Living area: 0

#		Dimensions	sqft	Counted as living area
1	Bar	5'3" x 4'0"	22 sq. ft	No
2	Recreation Room	18'0" x 17'0"	264 sq. ft	No
3	Storage	18'0" x 13'0"	208 sq. ft	No

**418 East Elm Street, Lebanon, Lebanon County,  
Pennsylvania, United States, 17042**



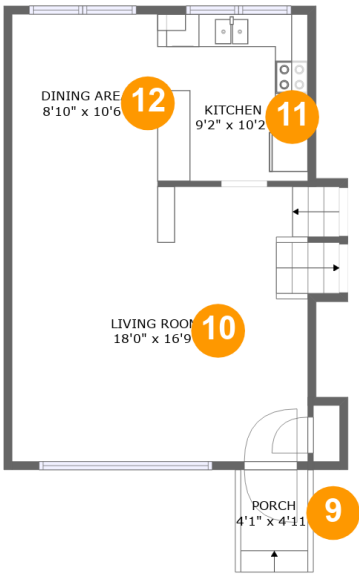
## Room dimensions

Floor 2

Total sqft: 630    Living area: 347

#		Dimensions	sqft	Counted as living area
4	Hall	3'4" x 5'2"	18 sq. ft	Yes
5	Utility	8'7" x 9'11"	72 sq. ft	Yes
6	Garage	10'4" x 25'2"	260 sq. ft	No
7	Room	12'4" x 14'11"	178 sq. ft	Yes
8	WC	4'6" x 4'4"	21 sq. ft	Yes

418 East Elm Street, Lebanon, Lebanon County,  
Pennsylvania, United States, 17042

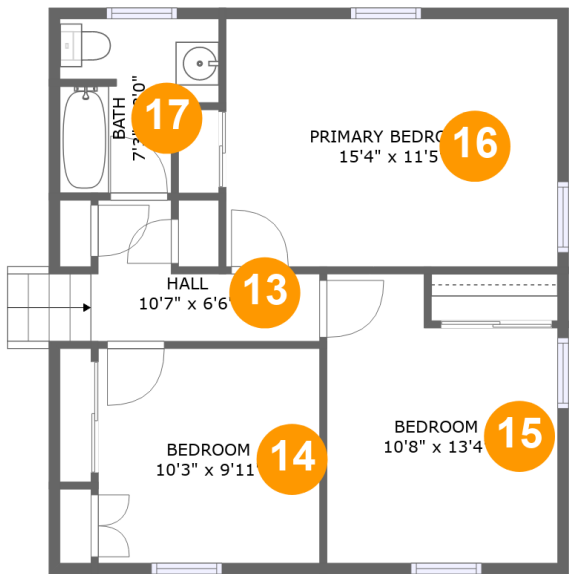


Room dimensions

Floor 3 Total sqft: 581    Living area: 561

#		Dimensions	sqft	Counted as living area
9	Porch	4'1" x 4'11"	20 sq. ft	No
10	Living Room	18'0" x 16'9"	314 sq. ft	Yes
11	Kitchen	9'2" x 10'2"	93 sq. ft	Yes
12	Dining Area	8'10" x 10'6"	93 sq. ft	Yes

418 East Elm Street, Lebanon, Lebanon County,  
Pennsylvania, United States, 17042



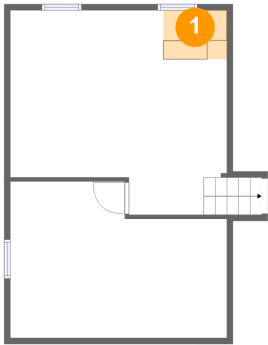
Room dimensions

Floor 4 Total sqft: 621    Living area: 621

#		Dimensions	sqft	Counted as living area
13	Hall	10'7" x 6'6"	44 sq. ft	Yes
14	Bedroom	10'3" x 9'11"	101 sq. ft	Yes
15	Bedroom	10'8" x 13'4"	127 sq. ft	Yes
16	Primary Bedroom	15'4" x 11'5"	175 sq. ft	Yes
17	Bath	7'3" x 8'0"	49 sq. ft	Yes

418 East Elm Street, Lebanon, Lebanon County,  
Pennsylvania, United States, 17042

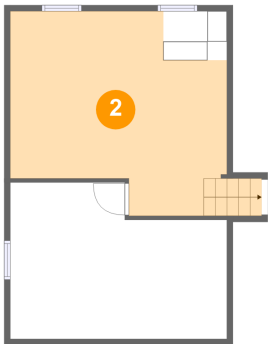
**1** Floor 1 - Bar



Dimensions: 5'3" x 4'0"  
Area: 22 sq. ft  
Counted as living area: No

Heated: Yes  
Finished: Yes  
Enclosed: Yes  
Contiguous: No  
Permitted: Yes  
Wet space: No  
Addition: No  
Conversion: No

**2** Floor 1 - Recreation Room

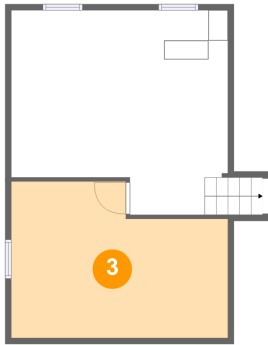


Dimensions: 18'0" x 17'0"  
Area: 264 sq. ft  
Counted as living area: No

Heated: Yes  
Finished: Yes  
Enclosed: Yes  
Contiguous: No  
Permitted: Yes  
Wet space: No  
Addition: No  
Conversion: No

418 East Elm Street, Lebanon, Lebanon County,  
Pennsylvania, United States, 17042

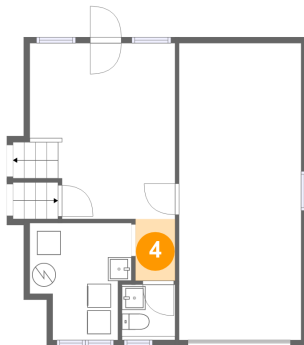
### 3 Floor 1 - Storage



Dimensions: 18'0" x 13'0"  
Area: 208 sq. ft  
Counted as living area: No

Heated: No  
Finished: No  
Enclosed: No  
Contiguous: Yes  
Permitted: Yes  
Wet space: No  
Addition: No  
Conversion: No

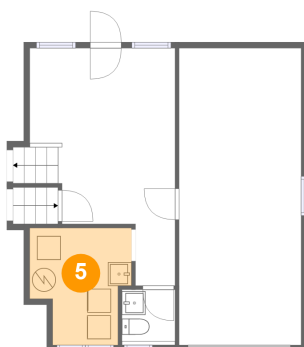
### 4 Floor 2 - Hall



Dimensions: 3'4" x 5'2"  
Area: 18 sq. ft  
Counted as living area: Yes

Heated: Yes  
Finished: Yes  
Enclosed: Yes  
Contiguous: Yes  
Permitted: Yes  
Wet space: No  
Addition: No  
Conversion: No

### 5 Floor 2 - Utility

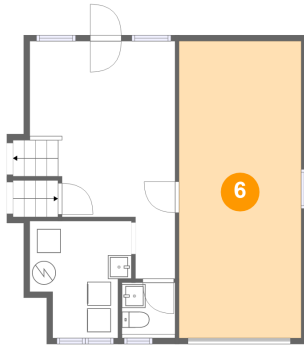


Dimensions: 8'7" x 9'11"  
Area: 72 sq. ft  
Counted as living area: Yes

Heated: Yes  
Finished: Yes  
Enclosed: Yes  
Contiguous: Yes  
Permitted: Yes  
Wet space: No  
Addition: No  
Conversion: No

418 East Elm Street, Lebanon, Lebanon County,  
Pennsylvania, United States, 17042

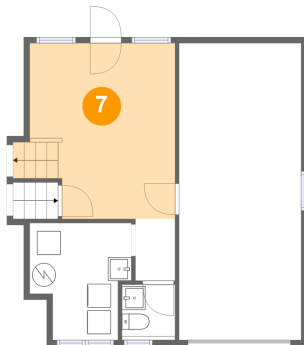
## 6 Floor 2 - Garage



Dimensions: 10'4" x 25'2"  
Area: 260 sq. ft  
Counted as living area: No

Heated: No  
Finished: No  
Enclosed: Yes  
Contiguous: Yes  
Permitted: Yes  
Wet space: No  
Addition: No  
Conversion: No

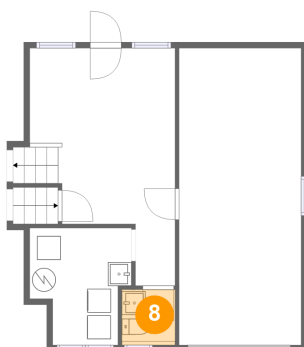
## 7 Floor 2 - Room



Dimensions: 12'4" x 14'11"  
Area: 178 sq. ft  
Counted as living area: Yes

Heated: Yes  
Finished: Yes  
Enclosed: Yes  
Contiguous: Yes  
Permitted: Yes  
Wet space: No  
Addition: No  
Conversion: No

## 8 Floor 2 - WC



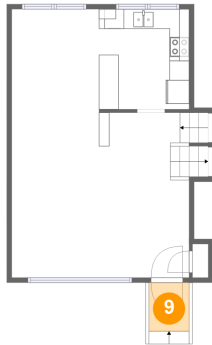
Dimensions: 4'6" x 4'4"  
Area: 21 sq. ft  
Counted as living area: Yes

Heated: Yes  
Finished: Yes  
Enclosed: Yes  
Contiguous: Yes  
Permitted: Yes  
Wet space: Yes  
Addition: No  
Conversion: No



418 East Elm Street, Lebanon, Lebanon County,  
Pennsylvania, United States, 17042

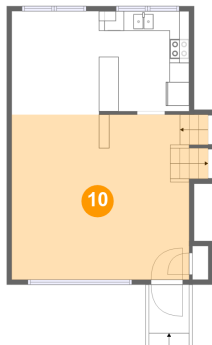
### 9 Floor 3 - Porch



Dimensions: 4'1" x 4'11"  
Area: 20 sq. ft  
Counted as living area: No

Heated: No  
Finished: Yes  
Enclosed: No  
Contiguous: Yes  
Permitted: Yes  
Wet space: No  
Addition: No  
Conversion: No

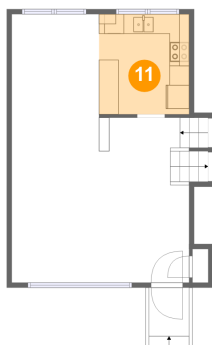
### 10 Floor 3 - Living Room



Dimensions: 18'0" x 16'9"  
Area: 314 sq. ft  
Counted as living area: Yes

Heated: Yes  
Finished: Yes  
Enclosed: Yes  
Contiguous: Yes  
Permitted: Yes  
Wet space: No  
Addition: No  
Conversion: No

### 11 Floor 3 - Kitchen

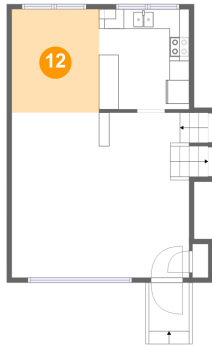


Dimensions: 9'2" x 10'2"  
Area: 93 sq. ft  
Counted as living area: Yes

Heated: Yes  
Finished: Yes  
Enclosed: Yes  
Contiguous: Yes  
Permitted: Yes  
Wet space: No  
Addition: No  
Conversion: No

**418 East Elm Street, Lebanon, Lebanon County,  
Pennsylvania, United States, 17042**

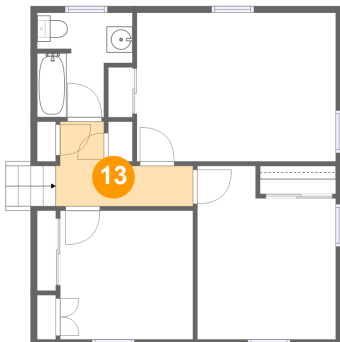
## **12** Floor 3 - Dining Area



**Dimensions:** 8'10" x 10'6"  
**Area:** 93 sq. ft  
**Counted as living area:** Yes

**Heated:** Yes  
**Finished:** Yes  
**Enclosed:** Yes  
**Contiguous:** Yes  
**Permitted:** Yes  
**Wet space:** No  
**Addition:** No  
**Conversion:** No

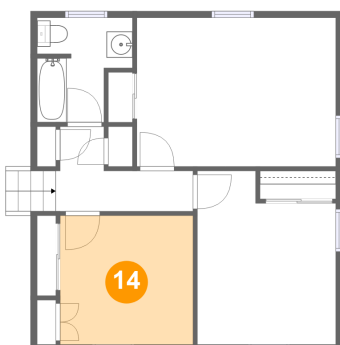
## **13** Floor 4 - Hall



**Dimensions:** 10'7" x 6'6"  
**Area:** 44 sq. ft  
**Counted as living area:** Yes

**Heated:** Yes  
**Finished:** Yes  
**Enclosed:** Yes  
**Contiguous:** Yes  
**Permitted:** Yes  
**Wet space:** No  
**Addition:** No  
**Conversion:** No

## **14** Floor 4 - Bedroom

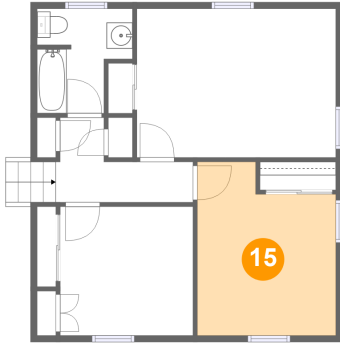


**Dimensions:** 10'3" x 9'11"  
**Area:** 101 sq. ft  
**Counted as living area:** Yes

**Heated:** Yes  
**Finished:** Yes  
**Enclosed:** Yes  
**Contiguous:** Yes  
**Permitted:** Yes  
**Wet space:** No  
**Addition:** No  
**Conversion:** No

418 East Elm Street, Lebanon, Lebanon County,  
Pennsylvania, United States, 17042

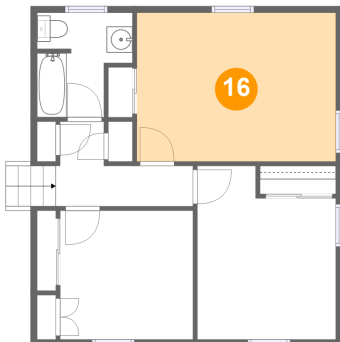
### 15 Floor 4 - Bedroom



Dimensions: 10'8" x 13'4"  
Area: 127 sq. ft  
Counted as living area: Yes

Heated: Yes  
Finished: Yes  
Enclosed: Yes  
Contiguous: Yes  
Permitted: Yes  
Wet space: No  
Addition: No  
Conversion: No

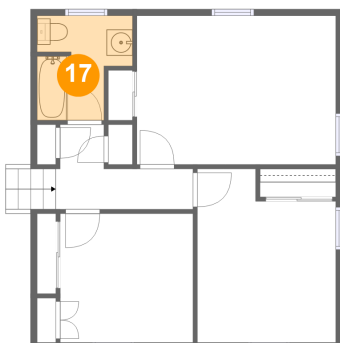
### 16 Floor 4 - Primary Bedroom



Dimensions: 15'4" x 11'5"  
Area: 175 sq. ft  
Counted as living area: Yes

Heated: Yes  
Finished: Yes  
Enclosed: Yes  
Contiguous: Yes  
Permitted: Yes  
Wet space: No  
Addition: No  
Conversion: No

### 17 Floor 4 - Bath



Dimensions: 7'3" x 8'0"  
Area: 49 sq. ft  
Counted as living area: Yes

Heated: Yes  
Finished: Yes  
Enclosed: Yes  
Contiguous: Yes  
Permitted: Yes  
Wet space: Yes  
Addition: No  
Conversion: No