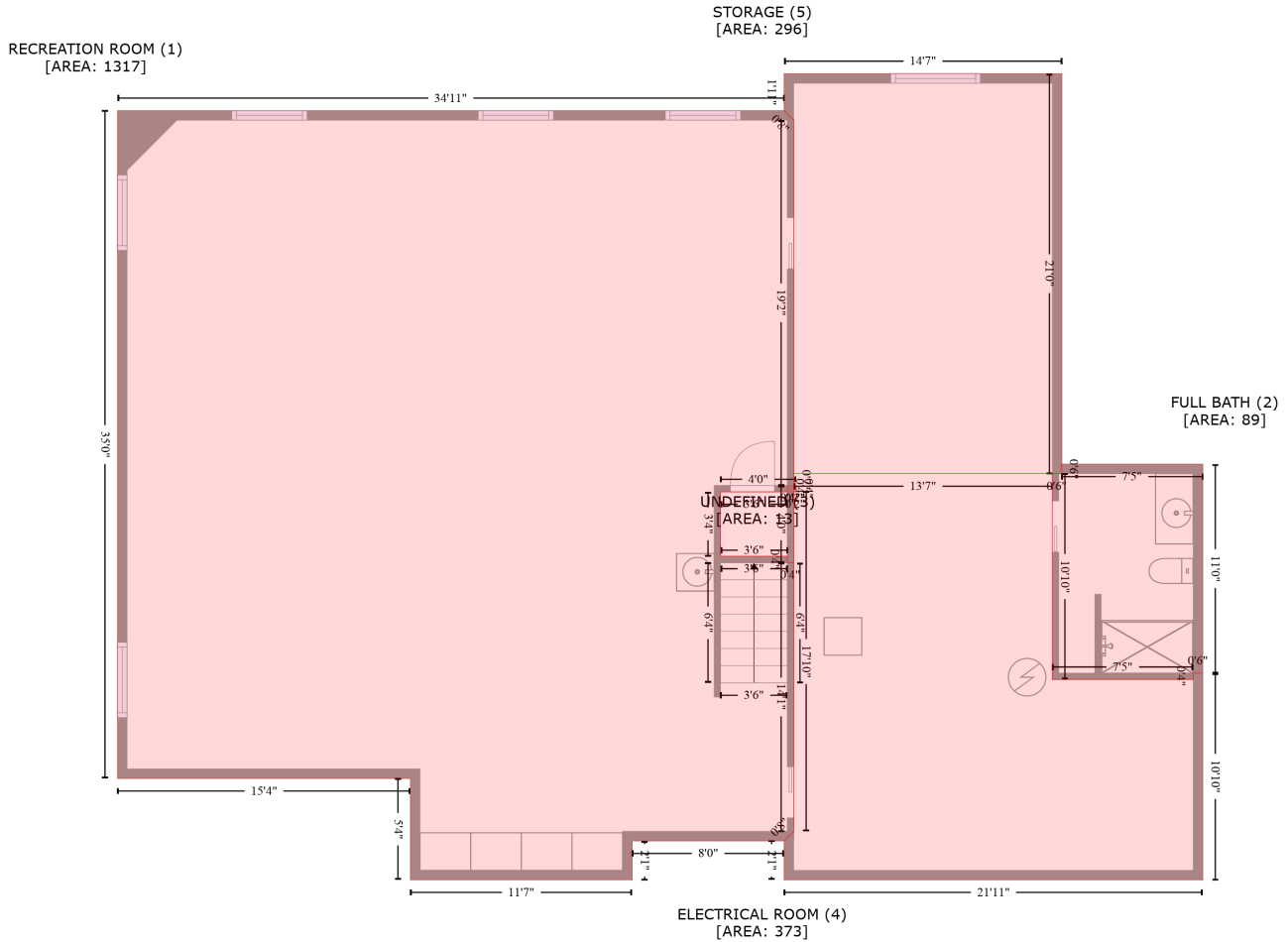


Singletree Dr, Mead, CO, US

Gross Living Area: 3121 sq. ft



Space	Area (sq. ft)	Calculation
RECREATION ROOM (Non-living area)	1317	$-\left((424.2 + 430.2) * (93.6 - 99.6) + (430.2 + 430.2) * (99.6 - 329.5) + (430.2 + 431.9) * (329.5 - 329.5) + (431.9 + 431.9) * (329.5 - 333.5) + (431.9 + 384.3) * (333.5 - 333.5) + (384.3 + 384.3) * (333.5 - 374) + (384.3 + 426.2) * (374 - 374) + (426.2 + 426.2) * (374 - 378) + (426.2 + 430.2) * (378 - 378) + (430.2 + 430.2) * (378 - 547.1) + (430.2 + 424.2) * (547.1 - 553.1) + (424.2 + 328.7) * (553.1 - 553.1) + (328.7 + 328.7) * (553.1 - 577.7) + (328.7 + 189.3) * (577.7 - 577.7) + (189.3 + 189.3) * (577.7 - 513.9) + (189.3 + 5.1) * (513.9 - 513.9) + (5.1 + 5.1) * (513.9 - 93.6) + (5.1 + 424.2) * (93.6 - 93.6)\right) * 0.5 * 0.00694$
FULL BATH (Non-living area)	89	$-\left((687.5 + 687.5) * (316 - 447.6) + (687.5 + 681.5) * (447.6 - 447.6) + (681.5 + 681.5) * (447.6 - 451.6) + (681.5 + 592.9) * (451.6 - 451.6) + (592.9 + 592.9) * (451.6 - 322) + (592.9 + 598.4) * (322 - 322) + (598.4 + 598.4) * (322 - 316) + (598.4 + 687.5) * (316 - 316)\right) * 0.5 * 0.00694$
UNDEFINED (Non-living area)	13	$-\left((430.2 + 430.2) * (329.5 - 378) + (430.2 + 426.2) * (378 - 378) + (426.2 + 426.2) * (378 - 374) + (426.2 + 384.3) * (374 - 374) + (384.3 + 384.3) * (374 - 333.5) + (384.3 + 426.2) * (333.5 - 333.5) + (426.2 + 426.2) * (333.5 - 329.5) + (426.2 + 430.2) * (329.5 - 329.5)\right) * 0.5 * 0.00694$
ELECTRICAL ROOM	373	$-\left((592.9 + 592.9) * (322 - 451.6) + (592.9 + 681.5) * (451.6 - 451.6) + (681.5 + 681.5) * (451.6 - 447.6) + (681.5 + 687.5) * (447.6 - 447.6) + (687.5 + 687.5) * (447.6 - 577.7) + (687.5 + 424.2) * (577.7 - 577.7)\right) * 0.5 * 0.00694$

Singletree Dr, Mead, CO, US

Gross Living Area: 3121 sq. ft

Space	Area (sq. ft)	Calculation <small>Coordinate Polygon Area Algorithm using inches</small>
(Non-living area)		$(577.7 - 577.7) + (424.2 + 424.2) * (577.7 - 553.1) + (424.2 + 430.2) * (553.1 - 547.1) + (430.2 + 430.2) * (547.1 - 333.5) + (430.2 + 431.9) * (333.5 - 333.5) + (431.9 + 431.9) * (333.5 - 329.5) + (431.9 + 430.2) * (329.5 - 329.5) + (430.2 + 430.2) * (329.5 - 322) + (430.2 + 592.9) * (322 - 322) * 0.5 * 0.00694$
STORAGE (Non-living area)	296	$-((598.9 + 598.9) * (70.4 - 322) + (598.9 + 430.2) * (322 - 322) + (430.2 + 430.2) * (322 - 99.6) + (430.2 + 424.2) * (99.6 - 93.6) + (424.2 + 424.2) * (93.6 - 70.4) + (424.2 + 598.9) * (70.4 - 70.4)) * 0.5 * 0.00694$

Singletree Dr, Mead, CO, US

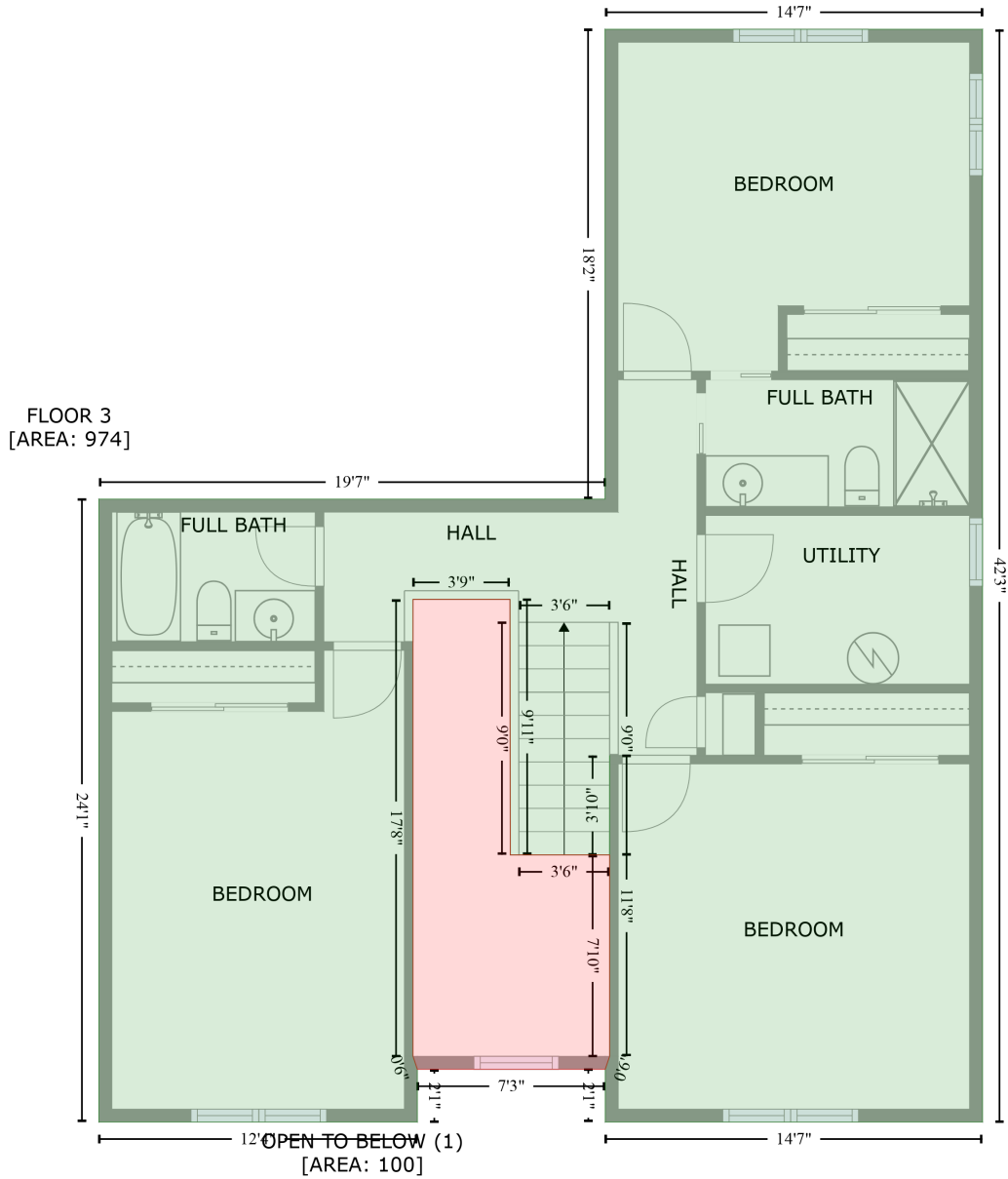
Gross Living Area: 3121 sq. ft



Space	Area (sq. ft)	Calculation
FLOOR 2 (Living area)	2147	Coordinate Polygon Area Algorithm using inches $-((598.9 + 598.9) * (70.4 - 316) + (598.9 + 694.3) * (316 - 316) + (694.3 + 694.3) * (316 - 571.7) + (694.3 + 688.3) * (571.7 - 571.7) + (688.3 + 688.3) * (571.7 - 577.7) + (688.3 + 424.2) * (577.7 - 577.7) + (424.2 + 424.2) * (577.7 - 553.1) + (424.2 + 337.1) * (553.1 - 553.1) + (337.1 + 337.1) * (553.1 - 577.7) + (337.1 + 189.3) * (577.7 - 577.7) + (189.3 + 189.3) * (577.7 - 532) + (189.3 + -2.5) * (532 - 532) + (-2.5 + -2.5) * (532 - 93.6) + (-2.5 + 424.2) * (93.6 - 93.6) + (424.2 + 424.2) * (93.6 - 70.4) + (424.2 + 598.9) * (70.4 - 70.4)) * 0.5 * 0.00694$
GARAGE (Non-living area)	800	$-((978.4 + 978.4) * (316 - 611.6) + (978.4 + 954.4) * (611.6 - 611.6) + (954.4 + 954.4) * (611.6 - 728) + (954.4 + 688.3) * (728 - 728) + (688.3 + 688.3) * (728 - 571.7) + (688.3 + 694.3) * (571.7 - 571.7) + (694.3 + 694.3) * (571.7 - 316) + (694.3 + 978.4) * (316 - 316)) * 0.5 * 0.00694$

Singletree Dr, Mead, CO, US

Gross Living Area: 3121 sq. ft



Space

Area (sq. ft)

Calculation Coordinate Polygon Area Algorithm using inches

FLOOR 3
(Living area)

974

$$\begin{aligned}
 & -((599.5 + 599.5) * (70.4 - 577.7) + (599.5 + 424.3) * (577.7 - 577.7) + (424.3 + 424.3) * (577.7 - \\
 & 553.1) + (424.3 + 426.3) * (553.1 - 547.1) + (426.3 + 426.3) * (547.1 - 407.4) + (426.3 + 426.3) * \\
 & (407.4 - 453.6) + (426.3 + 380.3) * (453.6 - 453.6) + (380.3 + 380.1) * (453.6 - 335) + (380.1 + \\
 & 335.1) * (335 - 335) + (335.1 + 335.1) * (335 - 547.1) + (335.1 + 337.1) * (547.1 - 553.1) + (337.1 \\
 & + 337.1) * (553.1 - 577.7) + (337.1 + 189.3) * (577.7 - 577.7) + (189.3 + 189.3) * (577.7 - 288.5) + \\
 & (189.3 + 424.2) * (288.5 - 288.5) + (424.2 + 424.2) * (288.5 - 70.4) + (424.2 + 599.5) * (70.4 - \\
 & 70.4)) * 0.5 * 0.00694
 \end{aligned}$$

Singletree Dr, Mead, CO, US

Gross Living Area: 3121 sq. ft

Space	Area (sq. ft)	Calculation <small>Coordinate Polygon Area Algorithm using inches</small>
OPEN TO BELOW (Non-living area)	100	$-\left((380.1 + 380.3) * (335 - 453.6) + (380.3 + 426.3) * (453.6 - 453.6) + (426.3 + 426.3) * (453.6 - 547.1) + (426.3 + 424.3) * (547.1 - 553.1) + (424.3 + 337.1) * (553.1 - 553.1) + (337.1 + 335.1) * (553.1 - 547.1) + (335.1 + 335.1) * (547.1 - 335) + (335.1 + 380.1) * (335 - 335)\right) * 0.5 * 0.00694$