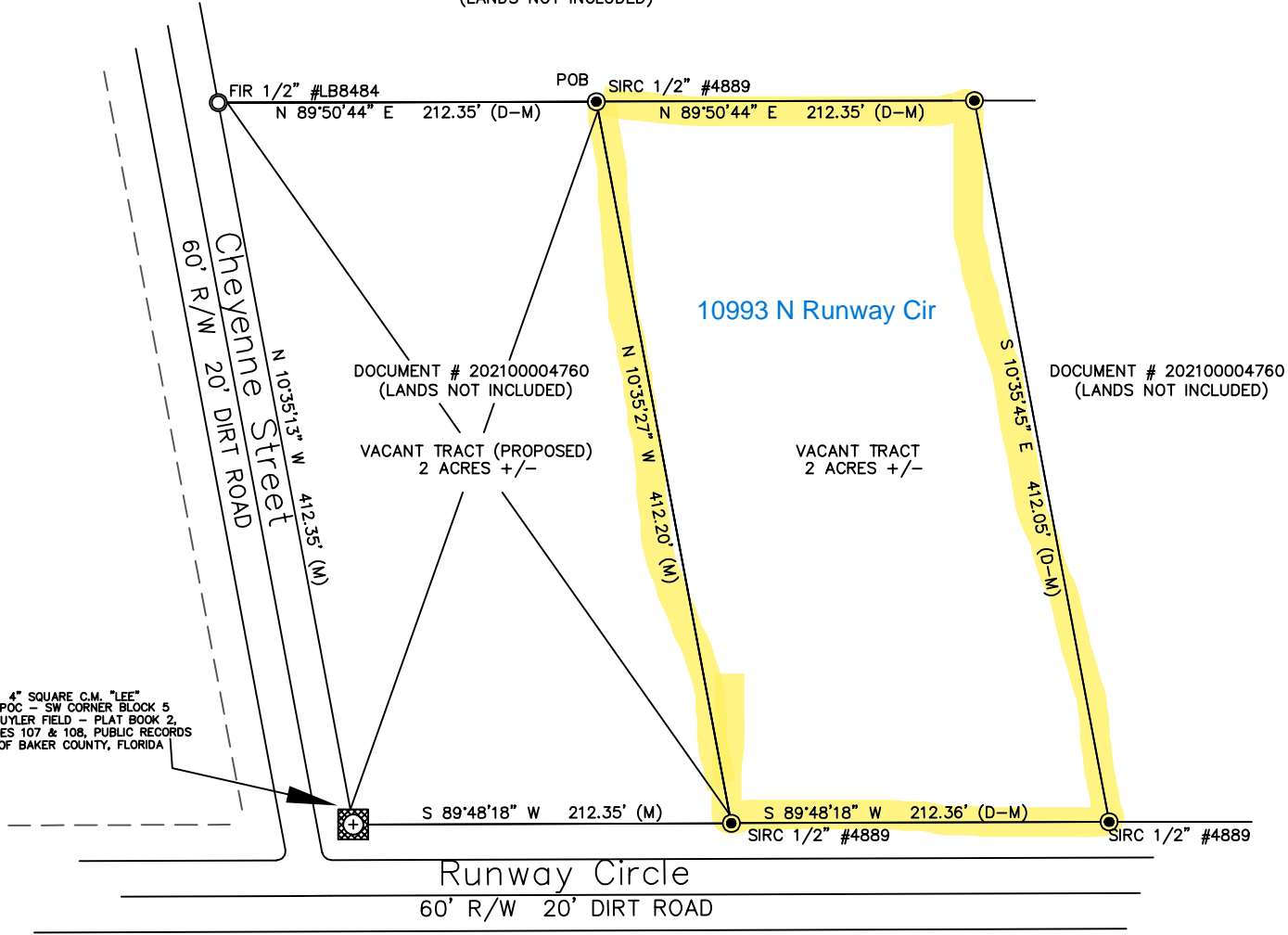


This is a Double Sided Document

This is a Double Sided Document

This is a Double Sided Document

DOCUMENT # 202200004232
(LANDS NOT INCLUDED)

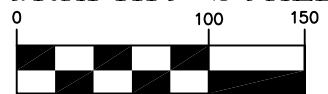


- ☐ = PRM/BLOCK CORNER FOUND 4" CONCRETE MONUMENT "LEE"
- ⊙ = FOUND 1/2" IRON ROD "LB#8484"
- = SET 1/2" IRON ROD #4889

MEASURED BEARINGS HEREON ARE BASED ON FLORIDA DEPARTMENT OF TRANSPORTATION BENCHMARKS "FL23" AND "FLMC", WHICH WERE DERIVED FROM A GLOBAL POSITIONING SYSTEM (GPS) REAL-TIME KINEMATIC (RTK) SURVEY. A SOKKIA GRX1 GPS RECEIVER WAS USED AS A ROVER, RTK CORRECTIONS WERE OBTAINED FROM THE FLORIDA PERMANENT REFERENCE NETWORK (FPRN), COORDINATES OBTAINED FROM THE GPS SURVEY ARE REFERENCED TO NORTH AMERICAN DATUM OF 1983 (NAD83)-(2011)-(EPOCH 2010.0000).



GRAPHIC SCALE



(IN FEET)
1 inch = 150 ft.

Sheet 2 of 2

Boundary Survey # 070523.2 for Latiff