


Home report


332 South Ann Street, Lancaster, Lancaster County,  
Pennsylvania, United States, 17602




Property summary




0  
Garages



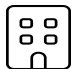
5  
Bedrooms




2  
Bathrooms




0  
Half baths



3  
Floors



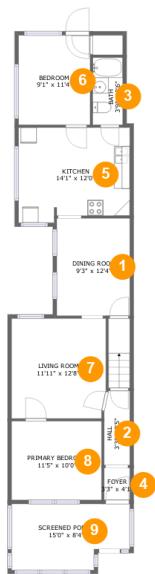
1,831  
Gross living  
area sqft



2,069  
Total sqft

Home report

332 South Ann Street, Lancaster, Lancaster County,  
Pennsylvania, United States, 17602



Room dimensions

Floor 1 Total sqft: 988    Living area: 858

#		Dimensions	sqft	Counted as living area
1	Dining Room	9'3" x 12'4"	114 sq. ft	Yes
2	Hall	3'3" x 9'5"	30 sq. ft	Yes
3	Bath	3'9" x 8'6"	32 sq. ft	Yes
4	Foyer	3'3" x 4'1"	13 sq. ft	Yes
5	Kitchen	14'1" x 12'0"	161 sq. ft	Yes
6	Bedroom	9'1" x 11'4"	103 sq. ft	Yes
7	Living Room	11'11" x 12'8"	150 sq. ft	Yes
8	Primary Bedroom	11'5" x 10'0"	114 sq. ft	Yes
9	Screened Porch	15'0" x 8'4"	113 sq. ft	No

Home report

332 South Ann Street, Lancaster, Lancaster County,  
Pennsylvania, United States, 17602



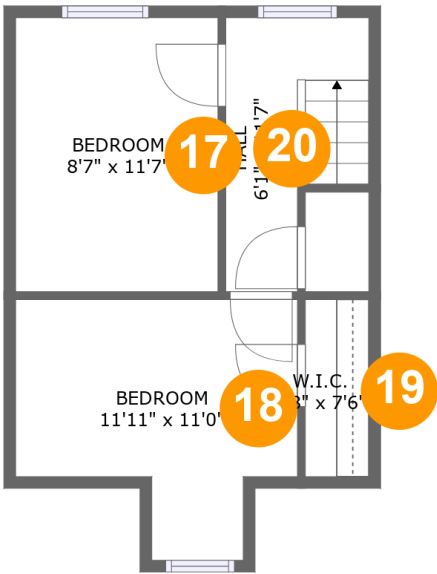
Room dimensions

Floor 2 Total sqft: 738    Living area: 630

#		Dimensions	sqft	Counted as living area
10	Living Room	15'0" x 10'6"	157 sq. ft	Yes
11	Bath	5'5" x 8'6"	43 sq. ft	Yes
12	Balcony	9'6" x 11'4"	108 sq. ft	No
13	Primary Bedroom	8'10" x 12'2"	107 sq. ft	Yes
14	Dining Room	9'3" x 10'8"	83 sq. ft	Yes
15	Hall	2'9" x 18'5"	94 sq. ft	Yes
16	Kitchen	9'3" x 6'7"	61 sq. ft	Yes

Home report

332 South Ann Street, Lancaster, Lancaster County,  
Pennsylvania, United States, 17602



Room dimensions

Floor 3 Total sqft: 343    Living area: 343

#		Dimensions	sqft	Counted as living area
17	Bedroom	8'7" x 11'7"	99 sq. ft	Yes
18	Bedroom	11'11" x 11'0"	103 sq. ft	Yes
19	W.I.C.	2'8" x 7'6"	20 sq. ft	Yes
20	Hall	6'1" x 11'7"	56 sq. ft	Yes

1 Floor 1 - Dining Room



Dimensions: 9'3" x 12'4"  
Area: 114 sq. ft  
Counted as living area: Yes

Heated: Yes  
Finished: Yes  
Enclosed: Yes  
Contiguous: Yes  
Permitted: Yes  
Wet space: No  
Addition: No  
Conversion: No

2 Floor 1 - Hall



Dimensions: 3'3" x 9'5"  
Area: 30 sq. ft  
Counted as living area: Yes

Heated: Yes  
Finished: Yes  
Enclosed: Yes  
Contiguous: Yes  
Permitted: Yes  
Wet space: No  
Addition: No  
Conversion: No

3 Floor 1 - Bath



Dimensions: 3'9" x 8'6"  
Area: 32 sq. ft  
Counted as living area: Yes

Heated: Yes  
Finished: Yes  
Enclosed: Yes  
Contiguous: Yes  
Permitted: Yes  
Wet space: Yes  
Addition: No  
Conversion: No

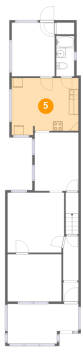
4 Floor 1 - Foyer



Dimensions: 3'3" x 4'1"  
Area: 13 sq. ft  
Counted as living area: Yes

Heated: Yes  
Finished: Yes  
Enclosed: Yes  
Contiguous: Yes  
Permitted: Yes  
Wet space: No  
Addition: No  
Conversion: No

5 Floor 1 - Kitchen



Dimensions: 14'1" x 12'0"  
Area: 161 sq. ft  
Counted as living area: Yes

Heated: Yes  
Finished: Yes  
Enclosed: Yes  
Contiguous: Yes  
Permitted: Yes  
Wet space: No  
Addition: No  
Conversion: No

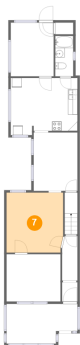
6 Floor 1 - Bedroom



Dimensions: 9'1" x 11'4"  
Area: 103 sq. ft  
Counted as living area: Yes

Heated: Yes  
Finished: Yes  
Enclosed: Yes  
Contiguous: Yes  
Permitted: Yes  
Wet space: No  
Addition: No  
Conversion: No

7 Floor 1 - Living Room



Dimensions: 11'11" x 12'8"  
Area: 150 sq. ft  
Counted as living area: Yes

Heated: Yes  
Finished: Yes  
Enclosed: Yes  
Contiguous: Yes  
Permitted: Yes  
Wet space: No  
Addition: No  
Conversion: No

8 Floor 1 - Primary Bedroom



Dimensions: 11'5" x 10'0"  
Area: 114 sq. ft  
Counted as living area: Yes

Heated: Yes  
Finished: Yes  
Enclosed: Yes  
Contiguous: Yes  
Permitted: Yes  
Wet space: No  
Addition: No  
Conversion: No

332 South Ann Street, Lancaster, Lancaster County,  
Pennsylvania, United States, 17602

## 9 Floor 1 - Screened Porch



Dimensions: 15'0" x 8'4"  
Area: 113 sq. ft  
Counted as living area: No

Heated: No  
Finished: Yes  
Enclosed: No  
Contiguous: Yes  
Permitted: Yes  
Wet space: No  
Addition: No  
Conversion: No

## 10 Floor 2 - Living Room



Dimensions: 15'0" x 10'6"  
Area: 157 sq. ft  
Counted as living area: Yes

Heated: Yes  
Finished: Yes  
Enclosed: Yes  
Contiguous: Yes  
Permitted: Yes  
Wet space: No  
Addition: No  
Conversion: No

## 11 Floor 2 - Bath



Dimensions: 5'5" x 8'6"  
Area: 43 sq. ft  
Counted as living area: Yes

Heated: Yes  
Finished: Yes  
Enclosed: Yes  
Contiguous: Yes  
Permitted: Yes  
Wet space: Yes  
Addition: No  
Conversion: No



12 Floor 2 - Balcony



Dimensions: 9'6" x 11'4"  
Area: 108 sq. ft  
Counted as living area: No

Heated: No  
Finished: Yes  
Enclosed: No  
Contiguous: Yes  
Permitted: Yes  
Wet space: No  
Addition: No  
Conversion: No

13 Floor 2 - Primary Bedroom



Dimensions: 8'10" x 12'2"  
Area: 107 sq. ft  
Counted as living area: Yes

Heated: Yes  
Finished: Yes  
Enclosed: Yes  
Contiguous: Yes  
Permitted: Yes  
Wet space: No  
Addition: No  
Conversion: No

14 Floor 2 - Dining Room



Dimensions: 9'3" x 10'8"  
Area: 83 sq. ft  
Counted as living area: Yes

Heated: Yes  
Finished: Yes  
Enclosed: Yes  
Contiguous: Yes  
Permitted: Yes  
Wet space: No  
Addition: No  
Conversion: No

15 Floor 2 - Hall



Dimensions: 2'9" x 18'5"  
Area: 94 sq. ft  
Counted as living area: Yes

Heated: Yes  
Finished: Yes  
Enclosed: Yes  
Contiguous: Yes  
Permitted: Yes  
Wet space: No  
Addition: No  
Conversion: No

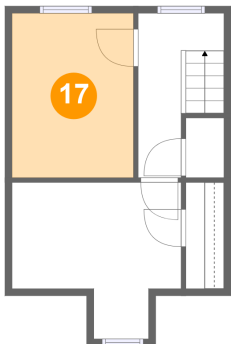
16 Floor 2 - Kitchen



Dimensions: 9'3" x 6'7"  
Area: 61 sq. ft  
Counted as living area: Yes

Heated: Yes  
Finished: Yes  
Enclosed: Yes  
Contiguous: Yes  
Permitted: Yes  
Wet space: No  
Addition: No  
Conversion: No

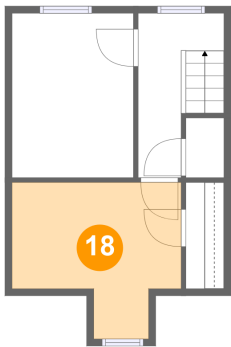
17 Floor 3 - Bedroom



Dimensions: 8'7" x 11'7"  
Area: 99 sq. ft  
Counted as living area: Yes

Heated: Yes  
Finished: Yes  
Enclosed: Yes  
Contiguous: Yes  
Permitted: Yes  
Wet space: No  
Addition: No  
Conversion: No

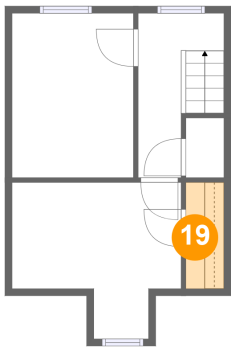
18 Floor 3 - Bedroom



Dimensions: 11'11" x 11'0"  
Area: 103 sq. ft  
Counted as living area: Yes

Heated: Yes  
Finished: Yes  
Enclosed: Yes  
Contiguous: Yes  
Permitted: Yes  
Wet space: No  
Addition: No  
Conversion: No

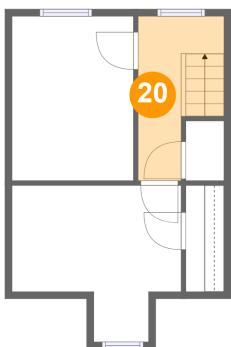
19 Floor 3 - W.I.C.



Dimensions: 2'8" x 7'6"  
Area: 20 sq. ft  
Counted as living area: Yes

Heated: Yes  
Finished: Yes  
Enclosed: Yes  
Contiguous: Yes  
Permitted: Yes  
Wet space: No  
Addition: No  
Conversion: No

20 Floor 3 - Hall



Dimensions: 6'1" x 11'7"  
Area: 56 sq. ft  
Counted as living area: Yes

Heated: Yes  
Finished: Yes  
Enclosed: Yes  
Contiguous: Yes  
Permitted: Yes  
Wet space: No  
Addition: No  
Conversion: No