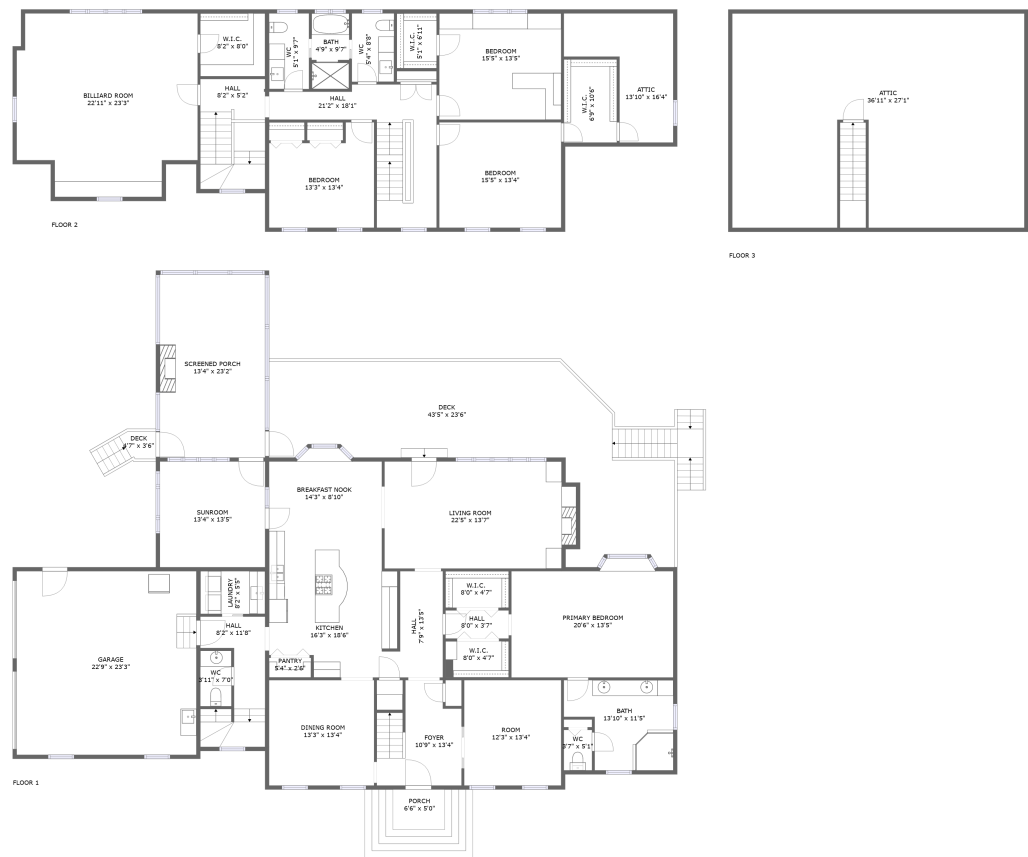


Home report

10711 Old Squaws Lane, Chesterfield, Chesterfield County,
Virginia, United States, 23838



Total Area: 4095 sq. ft

Floor 1: 2287 sq. ft, Floor 2: 1754 sq. ft, Floor 3: 54 sq. ft
Excluded: Deck 671 sq. ft, Porch 33 sq. ft, Screened porch 308 sq. ft, Garage 528 sq. ft,
Low ceiling 654 sq. ft, Attic 456 sq. ft, Walls: 356 sq. ft

Property summary

 **3** Floors

 **4** Bedrooms

 **2** Bathrooms

Home report

**10711 Old Squaws Lane, Chesterfield, Chesterfield County,
Virginia, United States, 23838**



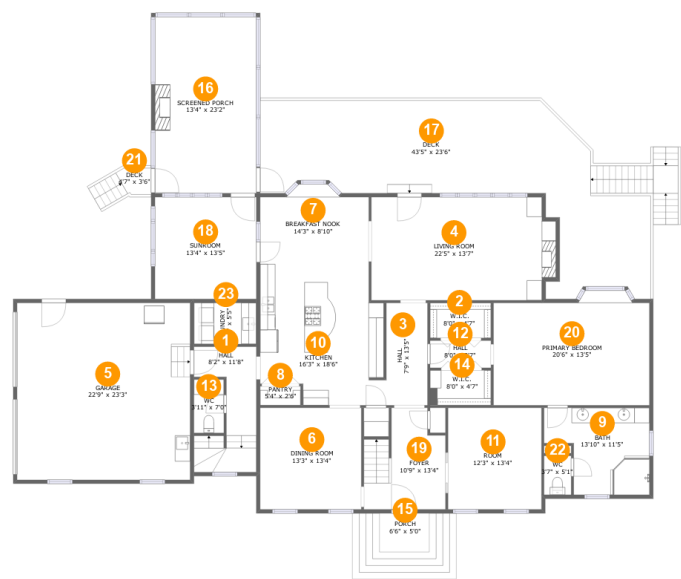
1
Half baths



1
Garages

Home report

10711 Old Squaws Lane, Chesterfield, Chesterfield County,
Virginia, United States, 23838



Room dimensions

Floor 1

Total:2287sqft

Excluded: 1540sqft

#		Max Dimensions	sqft	Included
1	Hall	8'2" x 11'8"	102 sq. ft	Yes
2	W.I.C.	8'0" x 4'7"	37 sq. ft	Yes
3	Hall	7'9" x 13'5"	80 sq. ft	Yes
4	Living Room	22'5" x 13'7"	317 sq. ft	Yes
5	Garage	22'9" x 23'3"	528 sq. ft	No
6	Dining Room	13'3" x 13'4"	177 sq. ft	Yes
7	Breakfast Nook	14'3" x 8'10"	135 sq. ft	Yes
8	Pantry	5'4" x 2'6"	13 sq. ft	Yes
9	Bath	13'10" x 11'5"	132 sq. ft	Yes
10	Kitchen	16'3" x 18'6"	267 sq. ft	Yes
11	Room	12'3" x 13'4"	164 sq. ft	Yes

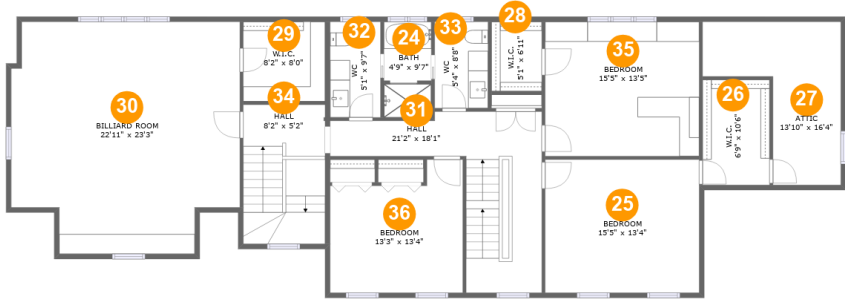
Home report

**10711 Old Squaws Lane, Chesterfield, Chesterfield County,
Virginia, United States, 23838**

#		Max Dimensions	sqft	Included
12	Hall	8'0" x 3'7"	29 sq. ft	Yes
13	WC	3'11" x 7'0"	28 sq. ft	Yes
14	W.I.C.	8'0" x 4'7"	37 sq. ft	Yes
15	Porch	6'6" x 5'0"	33 sq. ft	No
16	Screened Porch	13'4" x 23'2"	308 sq. ft	No
17	Deck	43'5" x 23'6"	658 sq. ft	No
18	Sunroom	13'4" x 13'5"	178 sq. ft	Yes
19	Foyer	10'9" x 13'4"	119 sq. ft	Yes
20	Primary Bedroom	20'6" x 13'5"	285 sq. ft	Yes
21	Deck	4'7" x 3'6"	13 sq. ft	No
22	WC	3'7" x 5'1"	18 sq. ft	Yes
23	Laundry	8'2" x 5'5"	44 sq. ft	Yes

Home report

10711 Old Squaws Lane, Chesterfield, Chesterfield County,
Virginia, United States, 23838



Room dimensions

Floor 2 Total:1754sqft Excluded: 162sqft

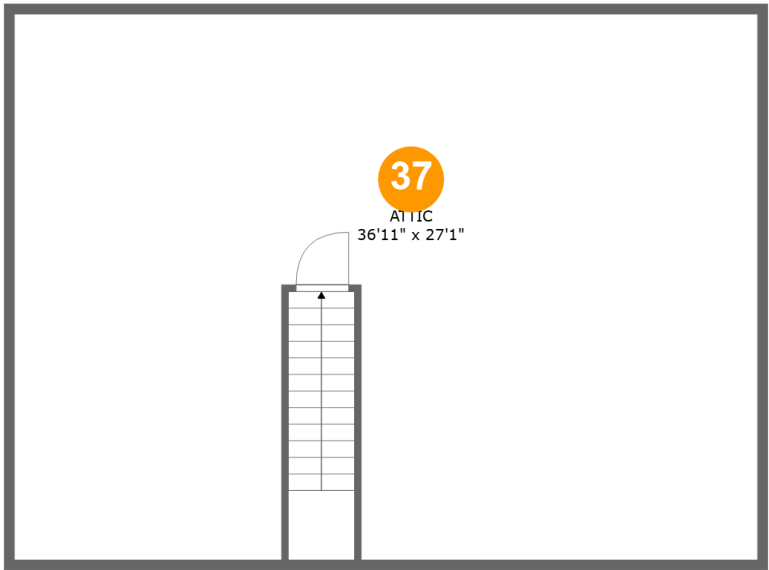
#		Max Dimensions	sqft	Included
24	Bath	4'9" x 9'7"	45 sq. ft	Yes
25	Bedroom	15'5" x 13'4"	206 sq. ft	Yes
26	W.I.C.	6'9" x 10'6"	71 sq. ft	Yes
27	Attic	13'10" x 16'4"	74 sq. ft	No
28	W.I.C.	5'1" x 6'11"	35 sq. ft	Yes
29	W.I.C.	8'2" x 8'0"	65 sq. ft	Yes
30	Billiard Room	22'11" x 23'3"	472 sq. ft	Yes
31	Hall	21'2" x 18'1"	188 sq. ft	Yes
32	WC	5'1" x 9'7"	48 sq. ft	Yes
33	WC	5'4" x 8'8"	46 sq. ft	Yes
34	Hall	8'2" x 5'2"	114 sq. ft	Yes

Home report

10711 Old Squaws Lane, Chesterfield, Chesterfield County,
Virginia, United States, 23838

#		Max Dimensions	sqft	Included
35	Bedroom	15'5" x 13'5"	207 sq. ft	Yes
36	Bedroom	13'3" x 13'4"	152 sq. ft	Yes

10711 Old Squaws Lane, Chesterfield, Chesterfield County,
Virginia, United States, 23838



Room dimensions

Floor 3 Total:54sqft Excluded: 948sqft

#		Max Dimensions	sqft	Included
37	Attic	36'11" x 27'1"	382 sq. ft	No

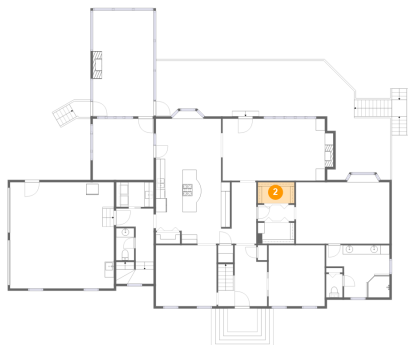
1 Floor 1 - Hall



Max Dimensions: 8'2" x 11'8"
Calculated Area: 102 sq. ft
Included: Yes

Heated: Yes
Finished: Yes
Enclosed: Yes
Contiguous: Yes
Permitted: Yes
Wet space: No
Addition: No
Conversion: No

2 Floor 1 - W.I.C.



Max Dimensions: 8'0" x 4'7"
Calculated Area: 37 sq. ft
Included: Yes

Heated: Yes
Finished: Yes
Enclosed: Yes
Contiguous: Yes
Permitted: Yes
Wet space: No
Addition: No
Conversion: No

10711 Old Squaws Lane, Chesterfield, Chesterfield County,
Virginia, United States, 23838

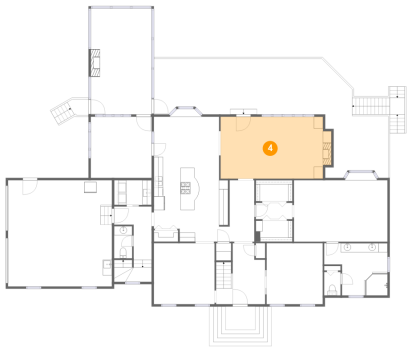
3 Floor 1 - Hall



Max Dimensions: 7'9" x 13'5"
Calculated Area: 80 sq. ft
Included: Yes

Heated: Yes
Finished: Yes
Enclosed: Yes
Contiguous: Yes
Permitted: Yes
Wet space: No
Addition: No
Conversion: No

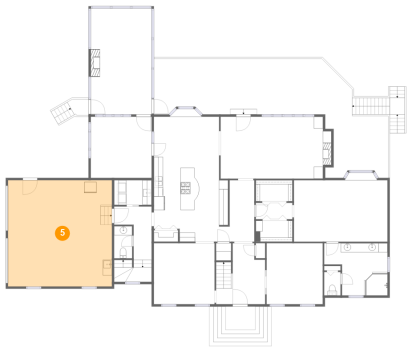
4 Floor 1 - Living Room



Max Dimensions: 22'5" x 13'7"
Calculated Area: 317 sq. ft
Included: Yes

Heated: Yes
Finished: Yes
Enclosed: Yes
Contiguous: Yes
Permitted: Yes
Wet space: No
Addition: No
Conversion: No

5 Floor 1 - Garage



Max Dimensions: 22'9" x 23'3"
Calculated Area: 528 sq. ft
Included: No

Heated: No
Finished: No
Enclosed: Yes
Contiguous: Yes
Permitted: Yes
Wet space: No
Addition: No
Conversion: No

10711 Old Squaws Lane, Chesterfield, Chesterfield County,
Virginia, United States, 23838

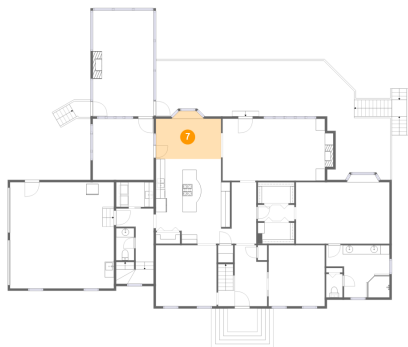
6 Floor 1 - Dining Room



Max Dimensions: 13'3" x 13'4"
Calculated Area: 177 sq. ft
Included: Yes

Heated: Yes
Finished: Yes
Enclosed: Yes
Contiguous: Yes
Permitted: Yes
Wet space: No
Addition: No
Conversion: No

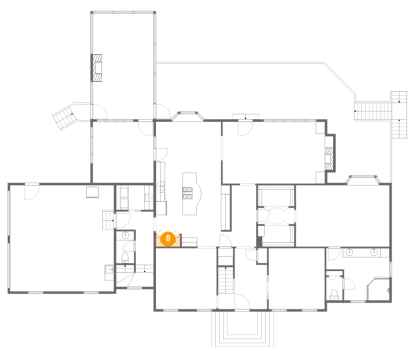
7 Floor 1 - Breakfast Nook



Max Dimensions: 14'3" x 8'10"
Calculated Area: 135 sq. ft
Included: Yes

Heated: Yes
Finished: Yes
Enclosed: Yes
Contiguous: Yes
Permitted: Yes
Wet space: No
Addition: No
Conversion: No

8 Floor 1 - Pantry

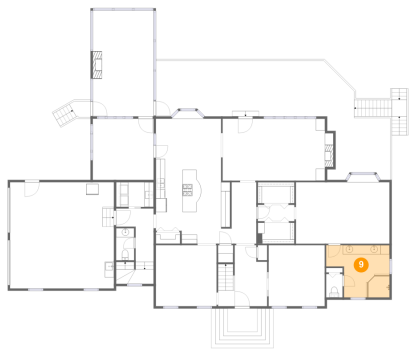


Max Dimensions: 5'4" x 2'6"
Calculated Area: 13 sq. ft
Included: Yes

Heated: Yes
Finished: Yes
Enclosed: Yes
Contiguous: Yes
Permitted: Yes
Wet space: No
Addition: No
Conversion: No

10711 Old Squaws Lane, Chesterfield, Chesterfield County,
Virginia, United States, 23838

9 Floor 1 - Bath



Max Dimensions: 13'10" x 11'5"
Calculated Area: 132 sq. ft
Included: Yes

Heated: Yes
Finished: Yes
Enclosed: Yes
Contiguous: Yes
Permitted: Yes
Wet space: Yes
Addition: No
Conversion: No

10 Floor 1 - Kitchen



Max Dimensions: 16'3" x 18'6"
Calculated Area: 267 sq. ft
Included: Yes

Heated: Yes
Finished: Yes
Enclosed: Yes
Contiguous: Yes
Permitted: Yes
Wet space: No
Addition: No
Conversion: No

11 Floor 1 - Room



Max Dimensions: 12'3" x 13'4"
Calculated Area: 164 sq. ft
Included: Yes

Heated: Yes
Finished: Yes
Enclosed: Yes
Contiguous: Yes
Permitted: Yes
Wet space: No
Addition: No
Conversion: No

10711 Old Squaws Lane, Chesterfield, Chesterfield County,
Virginia, United States, 23838

12 Floor 1 - Hall



Max Dimensions: 8'0" x 3'7"
Calculated Area: 29 sq. ft
Included: Yes

Heated: Yes
Finished: Yes
Enclosed: Yes
Contiguous: Yes
Permitted: Yes
Wet space: No
Addition: No
Conversion: No

13 Floor 1 - WC



Max Dimensions: 3'11" x 7'0"
Calculated Area: 28 sq. ft
Included: Yes

Heated: Yes
Finished: Yes
Enclosed: Yes
Contiguous: Yes
Permitted: Yes
Wet space: Yes
Addition: No
Conversion: No

14 Floor 1 - W.I.C.



Max Dimensions: 8'0" x 4'7"
Calculated Area: 37 sq. ft
Included: Yes

Heated: Yes
Finished: Yes
Enclosed: Yes
Contiguous: Yes
Permitted: Yes
Wet space: No
Addition: No
Conversion: No

10711 Old Squaws Lane, Chesterfield, Chesterfield County,
Virginia, United States, 23838

15 Floor 1 - Porch



Max Dimensions: 6'6" x 5'0"
Calculated Area: 33 sq. ft
Included: No

Heated: No
Finished: Yes
Enclosed: No
Contiguous: Yes
Permitted: Yes
Wet space: No
Addition: No
Conversion: No

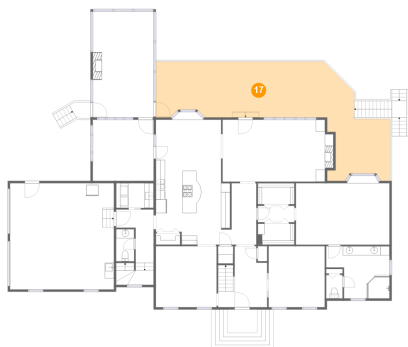
16 Floor 1 - Screened Porch



Max Dimensions: 13'4" x
23'2"
Calculated Area: 308 sq. ft
Included: No

Heated: No
Finished: Yes
Enclosed: No
Contiguous:
Yes
Permitted: Yes
Wet space: No
Addition: No
Conversion: No

17 Floor 1 - Deck



Max Dimensions: 43'5" x
23'6"
Calculated Area: 658 sq. ft
Included: No

Heated: No
Finished: Yes
Enclosed: No
Contiguous:
Yes
Permitted: Yes
Wet space: No
Addition: No
Conversion: No

10711 Old Squaws Lane, Chesterfield, Chesterfield County,
Virginia, United States, 23838

18 Floor 1 - Sunroom



Max Dimensions: 13'4" x 13'5"
Calculated Area: 178 sq. ft
Included: Yes

Heated: Yes
Finished: Yes
Enclosed: Yes
Contiguous: Yes
Permitted: Yes
Wet space: No
Addition: No
Conversion: No

19 Floor 1 - Foyer



Max Dimensions: 10'9" x 13'4"
Calculated Area: 119 sq. ft
Included: Yes

Heated: Yes
Finished: Yes
Enclosed: Yes
Contiguous: Yes
Permitted: Yes
Wet space: No
Addition: No
Conversion: No

20 Floor 1 - Primary Bedroom



Max Dimensions: 20'6" x 13'5"
Calculated Area: 285 sq. ft
Included: Yes

Heated: Yes
Finished: Yes
Enclosed: Yes
Contiguous: Yes
Permitted: Yes
Wet space: No
Addition: No
Conversion: No

10711 Old Squaws Lane, Chesterfield, Chesterfield County,
Virginia, United States, 23838

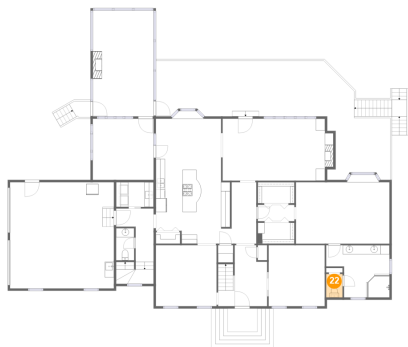
21 Floor 1 - Deck



Max Dimensions: 4'7" x 3'6"
Calculated Area: 13 sq. ft
Included: No

Heated: No
Finished: Yes
Enclosed: No
Contiguous: Yes
Permitted: Yes
Wet space: No
Addition: No
Conversion: No

22 Floor 1 - WC



Max Dimensions: 3'7" x 5'1"
Calculated Area: 18 sq. ft
Included: Yes

Heated: Yes
Finished: Yes
Enclosed: Yes
Contiguous: Yes
Permitted: Yes
Wet space: Yes
Addition: No
Conversion: No

23 Floor 1 - Laundry



Max Dimensions: 8'2" x 5'5"
Calculated Area: 44 sq. ft
Included: Yes

Heated: Yes
Finished: Yes
Enclosed: Yes
Contiguous: Yes
Permitted: Yes
Wet space: No
Addition: No
Conversion: No

10711 Old Squaws Lane, Chesterfield, Chesterfield County,
Virginia, United States, 23838

24 Floor 2 - Bath



Max Dimensions: 4'9" x 9'7"
Calculated Area: 45 sq. ft
Included: Yes

Heated: Yes
Finished: Yes
Enclosed: Yes
Contiguous: Yes
Permitted: Yes
Wet space: Yes
Addition: No
Conversion: No

25 Floor 2 - Bedroom



Max Dimensions: 15'5" x 13'4"
Calculated Area: 206 sq. ft
Included: Yes

Heated: Yes
Finished: Yes
Enclosed: Yes
Contiguous: Yes
Permitted: Yes
Wet space: No
Addition: No
Conversion: No

26 Floor 2 - W.I.C.



Max Dimensions: 6'9" x 10'6"
Calculated Area: 71 sq. ft
Included: Yes

Heated: Yes
Finished: Yes
Enclosed: Yes
Contiguous: Yes
Permitted: Yes
Wet space: No
Addition: No
Conversion: No

27 Floor 2 - Attic



Max Dimensions: 13'10" x 16'4"
Calculated Area: 74 sq. ft
Included: No

Heated: No
Finished: No
Enclosed: Yes
Contiguous: Yes
Permitted: Yes
Wet space: No
Addition: No
Conversion: No

28 Floor 2 - W.I.C.



Max Dimensions: 5'1" x 6'11"
Calculated Area: 35 sq. ft
Included: Yes

Heated: Yes
Finished: Yes
Enclosed: Yes
Contiguous: Yes
Permitted: Yes
Wet space: No
Addition: No
Conversion: No

29 Floor 2 - W.I.C.



Max Dimensions: 8'2" x 8'0"
Calculated Area: 65 sq. ft
Included: Yes

Heated: Yes
Finished: Yes
Enclosed: Yes
Contiguous: Yes
Permitted: Yes
Wet space: No
Addition: No
Conversion: No

10711 Old Squaws Lane, Chesterfield, Chesterfield County,
Virginia, United States, 23838

30 Floor 2 - Billiard Room



Max Dimensions: 22'11" x 23'3"
Calculated Area: 472 sq. ft
Included: Yes

Heated: Yes
Finished: Yes
Enclosed: Yes
Contiguous: Yes
Permitted: Yes
Wet space: No
Addition: No
Conversion: No

31 Floor 2 - Hall



Max Dimensions: 21'2" x 18'1"
Calculated Area: 188 sq. ft
Included: Yes

Heated: Yes
Finished: Yes
Enclosed: Yes
Contiguous: Yes
Permitted: Yes
Wet space: No
Addition: No
Conversion: No

32 Floor 2 - WC



Max Dimensions: 5'1" x 9'7"
Calculated Area: 48 sq. ft
Included: Yes

Heated: Yes
Finished: Yes
Enclosed: Yes
Contiguous: Yes
Permitted: Yes
Wet space: Yes
Addition: No
Conversion: No

Home report

10711 Old Squaws Lane, Chesterfield, Chesterfield County,
Virginia, United States, 23838

33 Floor 2 - WC



Max Dimensions: 5'4" x 8'8"
Calculated Area: 46 sq. ft
Included: Yes

Heated: Yes
Finished: Yes
Enclosed: Yes
Contiguous: Yes
Permitted: Yes
Wet space: Yes
Addition: No
Conversion: No

34 Floor 2 - Hall



Max Dimensions: 8'2" x 5'2"
Calculated Area: 114 sq. ft
Included: Yes

Heated: Yes
Finished: Yes
Enclosed: Yes
Contiguous: Yes
Permitted: Yes
Wet space: No
Addition: No
Conversion: No

35 Floor 2 - Bedroom



Max Dimensions: 15'5" x 13'5"
Calculated Area: 207 sq. ft
Included: Yes

Heated: Yes
Finished: Yes
Enclosed: Yes
Contiguous: Yes
Permitted: Yes
Wet space: No
Addition: No
Conversion: No

10711 Old Squaws Lane, Chesterfield, Chesterfield County,
Virginia, United States, 23838

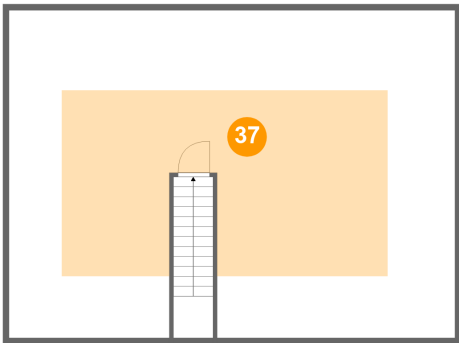
36 Floor 2 - Bedroom



Max Dimensions: 13'3" x 13'4"
Calculated Area: 152 sq. ft
Included: Yes

Heated: Yes
Finished: Yes
Enclosed: Yes
Contiguous: Yes
Permitted: Yes
Wet space: No
Addition: No
Conversion: No

37 Floor 3 - Attic



Max Dimensions: 36'11" x 27'1"
Calculated Area: 382 sq. ft
Included: No

Heated: No
Finished: No
Enclosed: Yes
Contiguous: Yes
Permitted: Yes
Wet space: No
Addition: No
Conversion: No