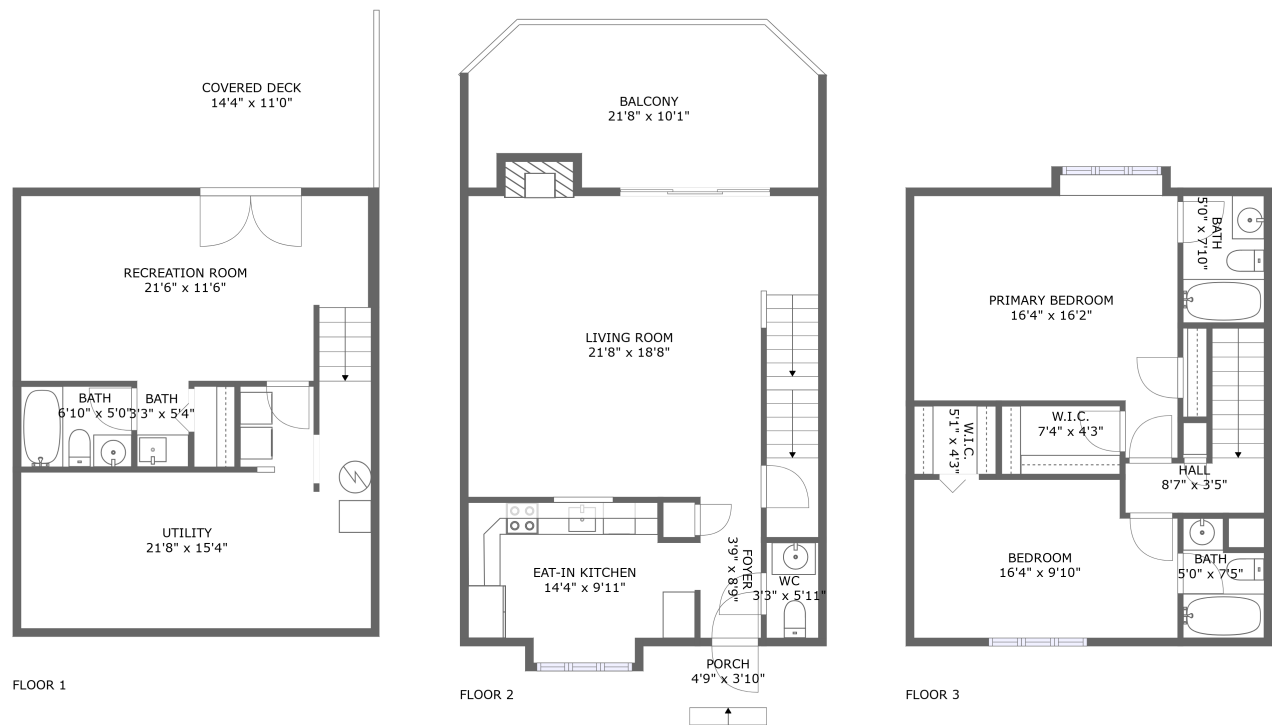




Home report


3459 Londonderry Court, Ruxton, Cave Spring, Roanoke,
Roanoke County, Virginia, United States, 24018





Property summary


 **0** Garages


 **2** Bedrooms

 **3** Bathrooms

 **1** Half baths

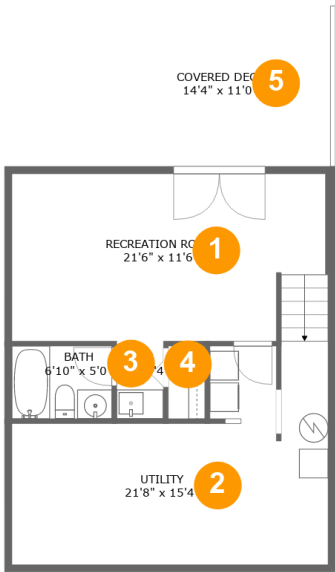
 **3** Floors

 **1,633** Gross living area sqft

 **2,294** Total sqft

Home report

3459 Londonderry Court, Ruxton, Cave Spring, Roanoke,
Roanoke County, Virginia, United States, 24018



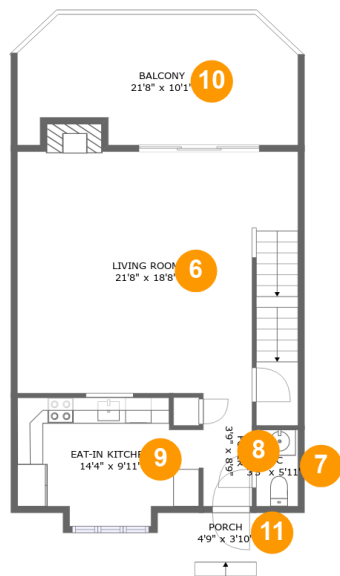
Room dimensions

Floor 1 Total sqft: 777 Living area: 348

#		Dimensions	sqft	Counted as living area
1	Recreation Room	21'6" x 11'6"	246 sq. ft	Yes
2	Utility	21'8" x 15'4"	251 sq. ft	No
3	Bath	6'10" x 5'0"	34 sq. ft	Yes
4	Bath	3'3" x 5'4"	17 sq. ft	Yes
5	Covered Deck	14'4" x 11'0"	158 sq. ft	No

Home report

3459 Londonderry Court, Ruxton, Cave Spring, Roanoke,
Roanoke County, Virginia, United States, 24018



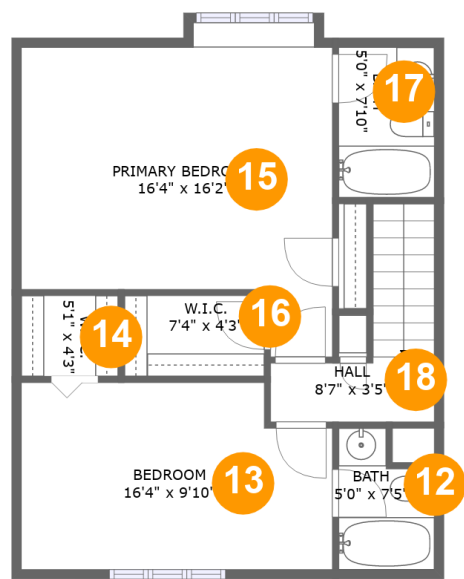
Room dimensions

Floor 2 Total sqft: 877 Living area: 645

#		Dimensions	sqft	Counted as living area
6	Living Room	21'8" x 18'8"	418 sq. ft	Yes
7	WC	3'3" x 5'11"	19 sq. ft	Yes
8	Foyer	3'9" x 8'9"	33 sq. ft	Yes
9	Eat-in Kitchen	14'4" x 9'11"	124 sq. ft	Yes
10	Balcony	21'8" x 10'1"	198 sq. ft	No
11	Porch	4'9" x 3'10"	23 sq. ft	No

Home report

3459 Londonderry Court, Ruxton, Cave Spring, Roanoke,
Roanoke County, Virginia, United States, 24018



Room dimensions

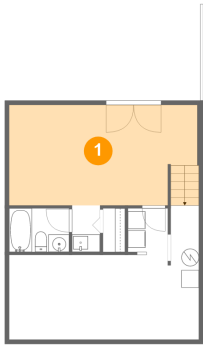
Floor 3

Total sqft: 640 Living area: 640

#		Dimensions	sqft	Counted as living area
12	Bath	5'0" x 7'5"	32 sq. ft	Yes
13	Bedroom	16'4" x 9'10"	152 sq. ft	Yes
14	W.I.C.	5'1" x 4'3"	21 sq. ft	Yes
15	Primary Bedroom	16'4" x 16'2"	227 sq. ft	Yes
16	W.I.C.	7'4" x 4'3"	31 sq. ft	Yes
17	Bath	5'0" x 7'10"	39 sq. ft	Yes
18	Hall	8'7" x 3'5"	53 sq. ft	Yes

3459 Londonderry Court, Ruxton, Cave Spring, Roanoke,
Roanoke County, Virginia, United States, 24018

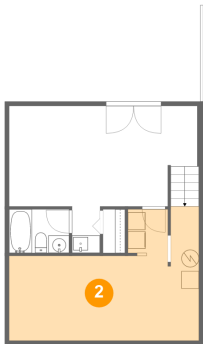
1 Floor 1 - Recreation Room



Dimensions: 21'6" x 11'6"
Area: 246 sq. ft
Counted as living area: Yes

Heated: Yes
Finished: Yes
Enclosed: Yes
Contiguous: Yes
Permitted: Yes
Wet space: No
Addition: No
Conversion: No

2 Floor 1 - Utility

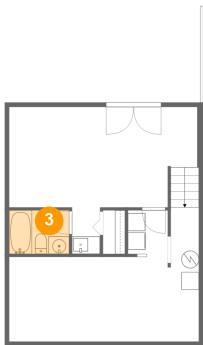


Dimensions: 21'8" x 15'4"
Area: 251 sq. ft
Counted as living area: No

Heated: Yes
Finished: No
Enclosed: Yes
Contiguous: Yes
Permitted: Yes
Wet space: No
Addition: No
Conversion: No

3459 Londonderry Court, Ruxton, Cave Spring, Roanoke,
Roanoke County, Virginia, United States, 24018

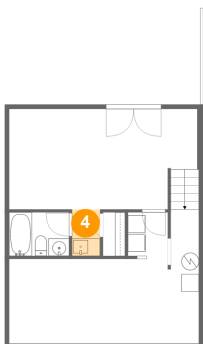
3 Floor 1 - Bath



Dimensions: 6'10" x 5'0"
Area: 34 sq. ft
Counted as living area: Yes

Heated: Yes
Finished: Yes
Enclosed: Yes
Contiguous: Yes
Permitted: Yes
Wet space: Yes
Addition: No
Conversion: No

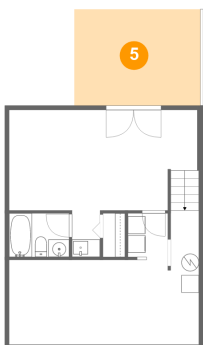
4 Floor 1 - Bath



Dimensions: 3'3" x 5'4"
Area: 17 sq. ft
Counted as living area: Yes

Heated: Yes
Finished: Yes
Enclosed: Yes
Contiguous: Yes
Permitted: Yes
Wet space: Yes
Addition: No
Conversion: No

5 Floor 1 - Covered Deck



Dimensions: 14'4" x 11'0"
Area: 158 sq. ft
Counted as living area: No

Heated: No
Finished: Yes
Enclosed: No
Contiguous: Yes
Permitted: Yes
Wet space: No
Addition: No
Conversion: No

3459 Londonderry Court, Ruxton, Cave Spring, Roanoke,
Roanoke County, Virginia, United States, 24018

6 Floor 2 - Living Room



Dimensions: 21'8" x 18'8"
Area: 418 sq. ft
Counted as living area: Yes

Heated: Yes
Finished: Yes
Enclosed: Yes
Contiguous: Yes
Permitted: Yes
Wet space: No
Addition: No
Conversion: No

7 Floor 2 - WC



Dimensions: 3'3" x 5'11"
Area: 19 sq. ft
Counted as living area: Yes

Heated: Yes
Finished: Yes
Enclosed: Yes
Contiguous: Yes
Permitted: Yes
Wet space: Yes
Addition: No
Conversion: No

8 Floor 2 - Foyer



Dimensions: 3'9" x 8'9"
Area: 33 sq. ft
Counted as living area: Yes

Heated: Yes
Finished: Yes
Enclosed: Yes
Contiguous: Yes
Permitted: Yes
Wet space: No
Addition: No
Conversion: No

3459 Londonderry Court, Ruxton, Cave Spring, Roanoke,
Roanoke County, Virginia, United States, 24018

9 Floor 2 - Eat-in Kitchen



Dimensions: 14'4" x 9'11"
Area: 124 sq. ft
Counted as living area: Yes

Heated: Yes
Finished: Yes
Enclosed: Yes
Contiguous: Yes
Permitted: Yes
Wet space: No
Addition: No
Conversion: No

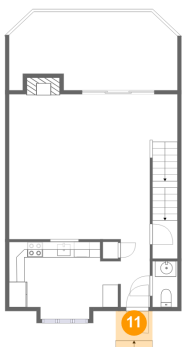
10 Floor 2 - Balcony



Dimensions: 21'8" x 10'1"
Area: 198 sq. ft
Counted as living area: No

Heated: No
Finished: Yes
Enclosed: No
Contiguous: Yes
Permitted: Yes
Wet space: No
Addition: No
Conversion: No

11 Floor 2 - Porch

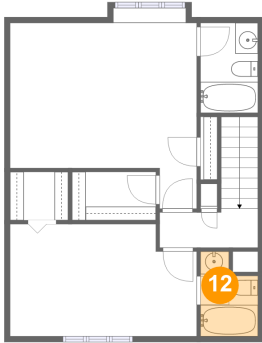


Dimensions: 4'9" x 3'10"
Area: 23 sq. ft
Counted as living area: No

Heated: No
Finished: Yes
Enclosed: No
Contiguous: Yes
Permitted: Yes
Wet space: No
Addition: No
Conversion: No

3459 Londonderry Court, Ruxton, Cave Spring, Roanoke,
Roanoke County, Virginia, United States, 24018

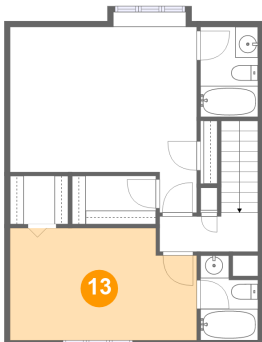
12 Floor 3 - Bath



Dimensions: 5'0" x 7'5"
Area: 32 sq. ft
Counted as living area: Yes

Heated: Yes
Finished: Yes
Enclosed: Yes
Contiguous: Yes
Permitted: Yes
Wet space: Yes
Addition: No
Conversion: No

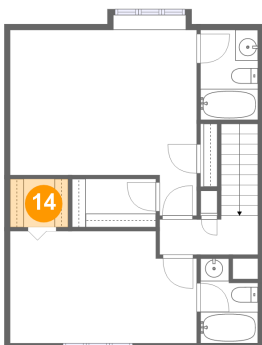
13 Floor 3 - Bedroom



Dimensions: 16'4" x 9'10"
Area: 152 sq. ft
Counted as living area: Yes

Heated: Yes
Finished: Yes
Enclosed: Yes
Contiguous: Yes
Permitted: Yes
Wet space: No
Addition: No
Conversion: No

14 Floor 3 - W.I.C.

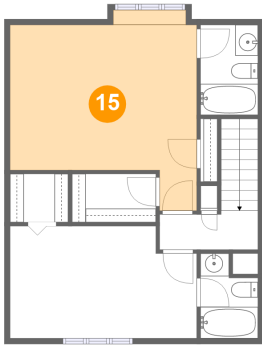


Dimensions: 5'1" x 4'3"
Area: 21 sq. ft
Counted as living area: Yes

Heated: Yes
Finished: Yes
Enclosed: Yes
Contiguous: Yes
Permitted: Yes
Wet space: No
Addition: No
Conversion: No

3459 Londonderry Court, Ruxton, Cave Spring, Roanoke,
Roanoke County, Virginia, United States, 24018

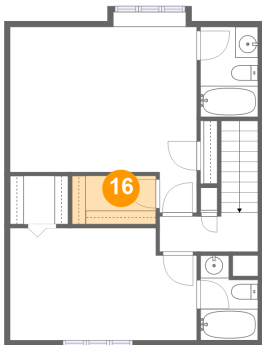
15 Floor 3 - Primary Bedroom



Dimensions: 16'4" x 16'2"
Area: 227 sq. ft
Counted as living area: Yes

Heated: Yes
Finished: Yes
Enclosed: Yes
Contiguous: Yes
Permitted: Yes
Wet space: No
Addition: No
Conversion: No

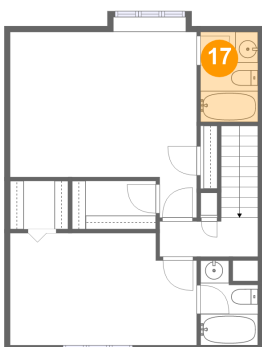
16 Floor 3 - W.I.C.



Dimensions: 7'4" x 4'3"
Area: 31 sq. ft
Counted as living area: Yes

Heated: Yes
Finished: Yes
Enclosed: Yes
Contiguous: Yes
Permitted: Yes
Wet space: No
Addition: No
Conversion: No

17 Floor 3 - Bath

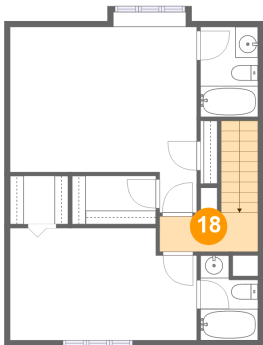


Dimensions: 5'0" x 7'10"
Area: 39 sq. ft
Counted as living area: Yes

Heated: Yes
Finished: Yes
Enclosed: Yes
Contiguous: Yes
Permitted: Yes
Wet space: Yes
Addition: No
Conversion: No

3459 Londonderry Court, Ruxton, Cave Spring, Roanoke,
Roanoke County, Virginia, United States, 24018

18 Floor 3 - Hall



Dimensions: 8'7" x 3'5"
Area: 53 sq. ft
Counted as living area: Yes

Heated: Yes
Finished: Yes
Enclosed: Yes
Contiguous: Yes
Permitted: Yes
Wet space: No
Addition: No
Conversion: No