


Home report

104 Paths Ridge Ct, Yorktown, VA, US




Property summary




1

Garages




4

Bedrooms



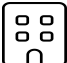
2

Bathrooms




2

Half baths




3

Floors



2,483

Gross living area sqft

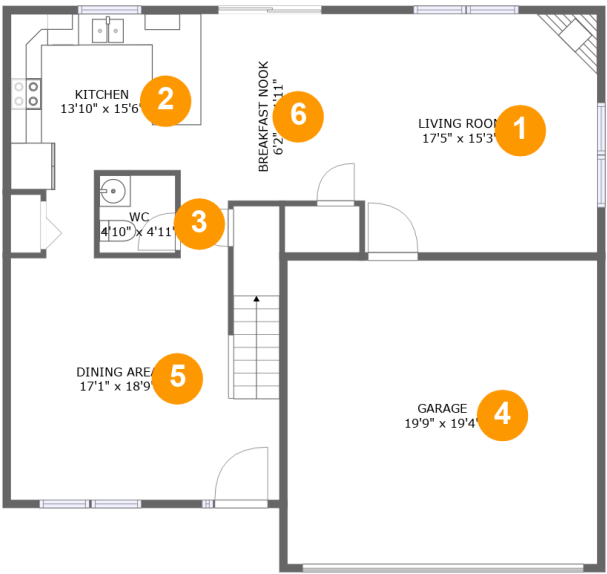


3,107

Total sqft

Home report

104 Paths Ridge Ct,Yorktown,VA,US



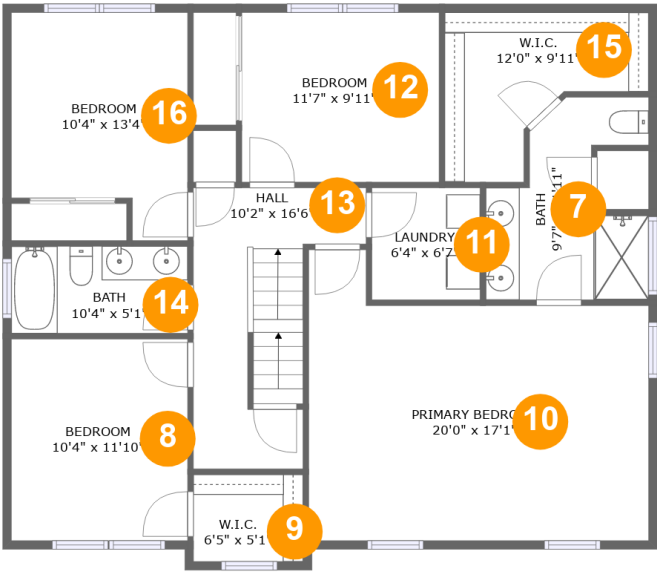
Room dimensions

Floor 1 Total sqft: 1315 Living area: 910

#		Dimensions	sqft	Counted as living area
1	Living Room	17'5" x 15'3"	256 sq. ft	Yes
2	Kitchen	13'10" x 15'6"	175 sq. ft	Yes
3	WC	4'10" x 4'11"	24 sq. ft	Yes
4	Garage	19'9" x 19'4"	383 sq. ft	No
5	Dining Area	17'1" x 18'9"	273 sq. ft	Yes
6	Breakfast Nook	6'2" x 11'11"	74 sq. ft	Yes

Home report

104 Paths Ridge Ct, Yorktown, VA, US



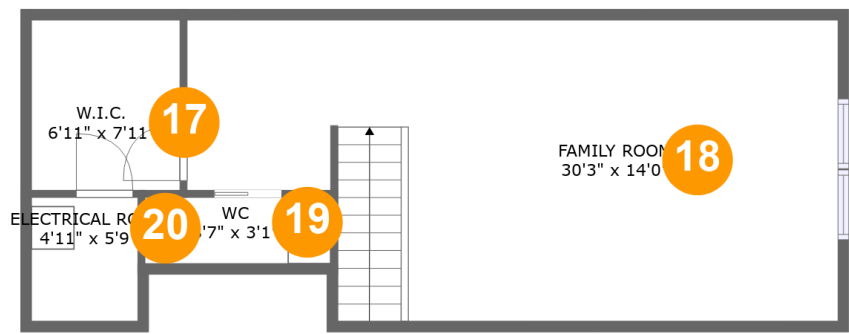
Room dimensions

Floor 2 Total sqft: 1239 Living area: 1239

#		Dimensions	sqft	Counted as living area
7	Bath	9'7" x 11'11"	84 sq. ft	Yes
8	Bedroom	10'4" x 11'10"	123 sq. ft	Yes
9	W.I.C.	6'5" x 5'1"	33 sq. ft	Yes
10	Primary Bedroom	20'0" x 17'1"	287 sq. ft	Yes
11	Laundry	6'4" x 6'7"	42 sq. ft	Yes
12	Bedroom	11'7" x 9'11"	115 sq. ft	Yes
13	Hall	10'2" x 16'6"	116 sq. ft	Yes
14	Bath	10'4" x 5'1"	53 sq. ft	Yes
15	W.I.C.	12'0" x 9'11"	83 sq. ft	Yes
16	Bedroom	10'4" x 13'4"	121 sq. ft	Yes

Home report

104 Paths Ridge Ct,Yorktown,VA,US

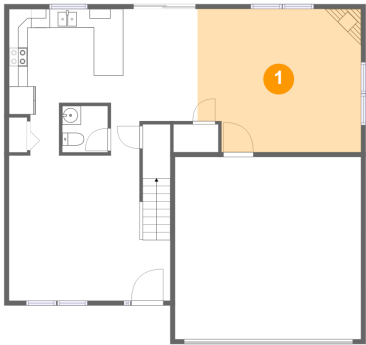


Room dimensions

Floor 3 Total sqft: 553 Living area: 334

#		Dimensions	sqft	Counted as living area
17	W.I.C.	6'11" x 7'11"	36 sq. ft	Yes
18	Family Room	30'3" x 14'0"	247 sq. ft	Yes
19	WC	8'7" x 3'1"	26 sq. ft	Yes
20	Electrical Room	4'11" x 5'9"	16 sq. ft	No

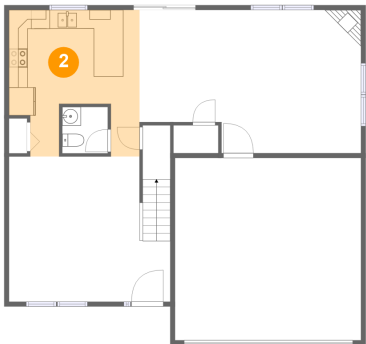
1 Floor 1 - Living Room



Dimensions: 17'5" x 15'3"
Area: 256 sq. ft
Counted as living area: Yes

Heated: Yes
Finished: Yes
Enclosed: Yes
Contiguous: Yes
Permitted: Yes
Wet space: No
Addition: No
Conversion: No

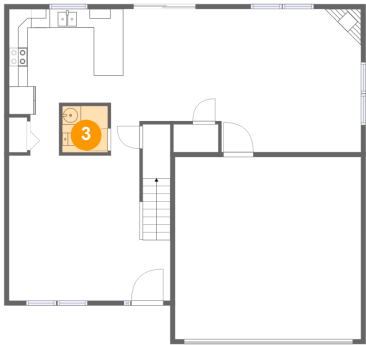
2 Floor 1 - Kitchen



Dimensions: 13'10" x 15'6"
Area: 175 sq. ft
Counted as living area: Yes

Heated: Yes
Finished: Yes
Enclosed: Yes
Contiguous: Yes
Permitted: Yes
Wet space: No
Addition: No
Conversion: No

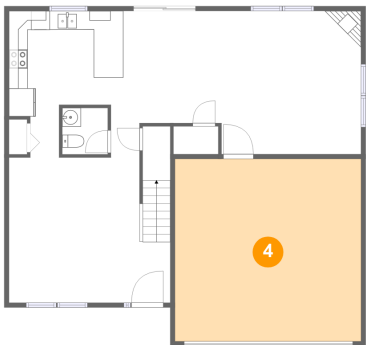
3 Floor 1 - WC



Dimensions: 4'10" x 4'11"
Area: 24 sq. ft
Counted as living area: Yes

Heated: Yes
Finished: Yes
Enclosed: Yes
Contiguous: Yes
Permitted: Yes
Wet space: Yes
Addition: No
Conversion: No

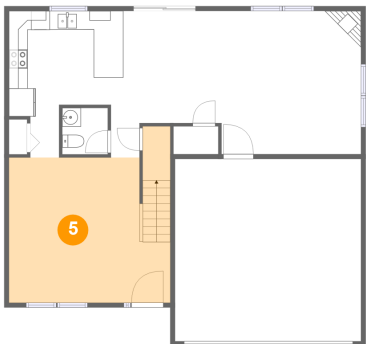
4 Floor 1 - Garage



Dimensions: 19'9" x 19'4"
Area: 383 sq. ft
Counted as living area: No

Heated: No
Finished: No
Enclosed: Yes
Contiguous: Yes
Permitted: Yes
Wet space: No
Addition: No
Conversion: No

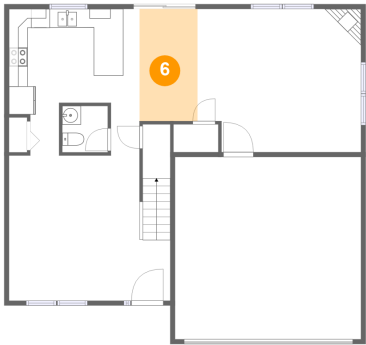
5 Floor 1 - Dining Area



Dimensions: 17'1" x 18'9"
Area: 273 sq. ft
Counted as living area: Yes

Heated: Yes
Finished: Yes
Enclosed: Yes
Contiguous: Yes
Permitted: Yes
Wet space: No
Addition: No
Conversion: No

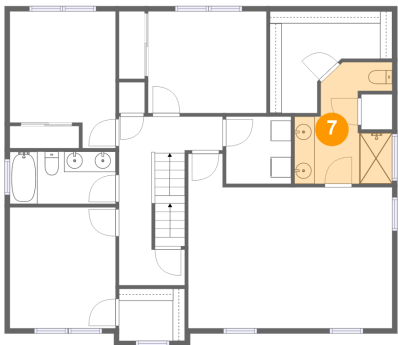
6 Floor 1 - Breakfast Nook



Dimensions: 6'2" x 11'11"
Area: 74 sq. ft
Counted as living area: Yes

Heated: Yes
Finished: Yes
Enclosed: Yes
Contiguous: Yes
Permitted: Yes
Wet space: No
Addition: No
Conversion: No

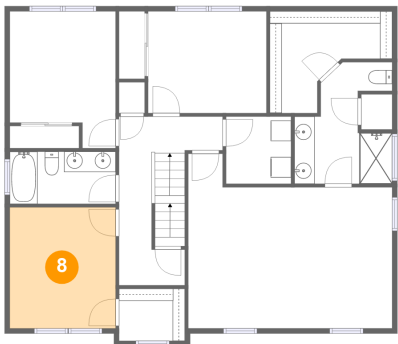
7 Floor 2 - Bath



Dimensions: 9'7" x 11'11"
Area: 84 sq. ft
Counted as living area: Yes

Heated: Yes
Finished: Yes
Enclosed: Yes
Contiguous: Yes
Permitted: Yes
Wet space: Yes
Addition: No
Conversion: No

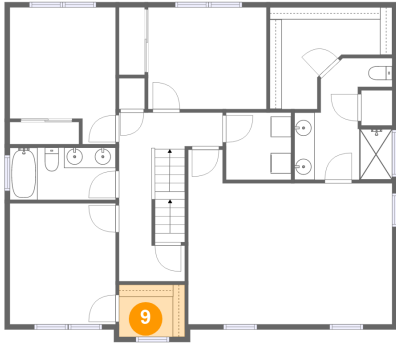
8 Floor 2 - Bedroom



Dimensions: 10'4" x 11'10"
Area: 123 sq. ft
Counted as living area: Yes

Heated: Yes
Finished: Yes
Enclosed: Yes
Contiguous: Yes
Permitted: Yes
Wet space: No
Addition: No
Conversion: No

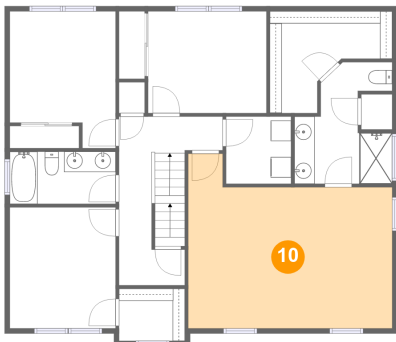
9 Floor 2 - W.I.C.



Dimensions: 6'5" x 5'1"
Area: 33 sq. ft
Counted as living area: Yes

Heated: Yes
Finished: Yes
Enclosed: Yes
Contiguous: Yes
Permitted: Yes
Wet space: No
Addition: No
Conversion: No

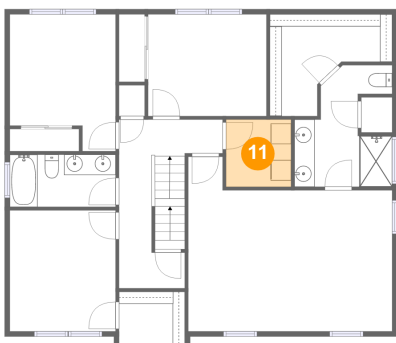
10 Floor 2 - Primary Bedroom



Dimensions: 20'0" x 17'1"
Area: 287 sq. ft
Counted as living area: Yes

Heated: Yes
Finished: Yes
Enclosed: Yes
Contiguous: Yes
Permitted: Yes
Wet space: No
Addition: No
Conversion: No

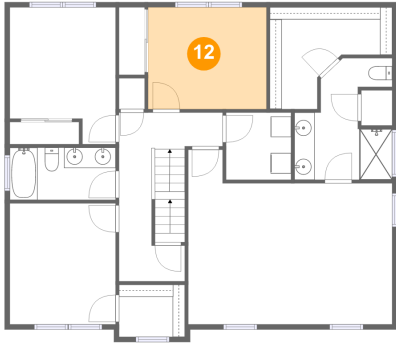
11 Floor 2 - Laundry



Dimensions: 6'4" x 6'7"
Area: 42 sq. ft
Counted as living area: Yes

Heated: Yes
Finished: Yes
Enclosed: Yes
Contiguous: Yes
Permitted: Yes
Wet space: No
Addition: No
Conversion: No

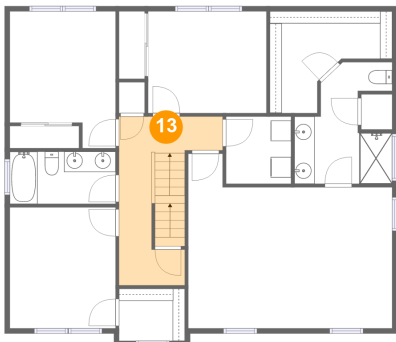
12 Floor 2 - Bedroom



Dimensions: 11'7" x 9'11"
Area: 115 sq. ft
Counted as living area: Yes

Heated: Yes
Finished: Yes
Enclosed: Yes
Contiguous: Yes
Permitted: Yes
Wet space: No
Addition: No
Conversion: No

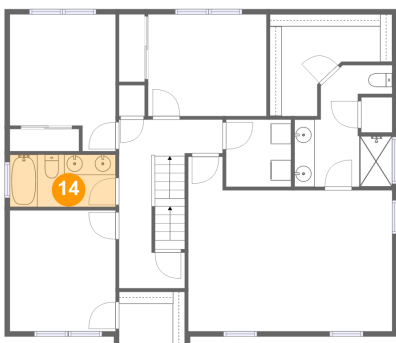
13 Floor 2 - Hall



Dimensions: 10'2" x 16'6"
Area: 116 sq. ft
Counted as living area: Yes

Heated: Yes
Finished: Yes
Enclosed: Yes
Contiguous: Yes
Permitted: Yes
Wet space: No
Addition: No
Conversion: No

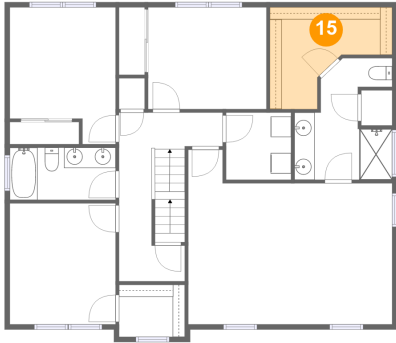
14 Floor 2 - Bath



Dimensions: 10'4" x 5'1"
Area: 53 sq. ft
Counted as living area: Yes

Heated: Yes
Finished: Yes
Enclosed: Yes
Contiguous: Yes
Permitted: Yes
Wet space: Yes
Addition: No
Conversion: No

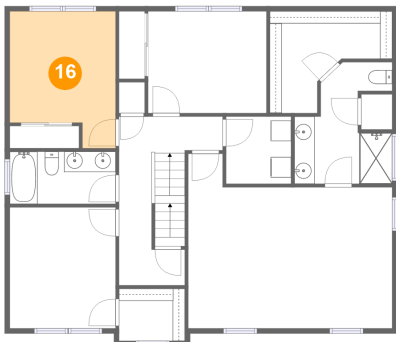
15 Floor 2 - W.I.C.



Dimensions: 12'0" x 9'11"
Area: 83 sq. ft
Counted as living area: Yes

Heated: Yes
Finished: Yes
Enclosed: Yes
Contiguous: Yes
Permitted: Yes
Wet space: No
Addition: No
Conversion: No

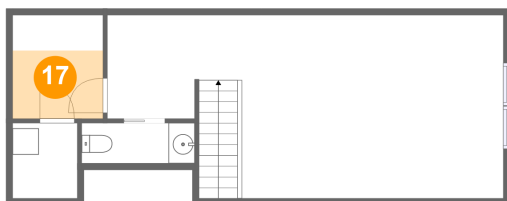
16 Floor 2 - Bedroom



Dimensions: 10'4" x 13'4"
Area: 121 sq. ft
Counted as living area: Yes

Heated: Yes
Finished: Yes
Enclosed: Yes
Contiguous: Yes
Permitted: Yes
Wet space: No
Addition: No
Conversion: No

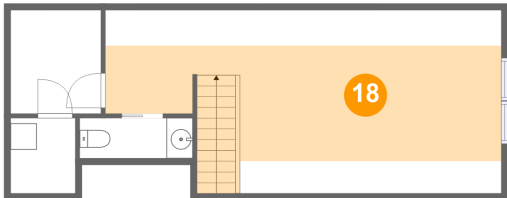
17 Floor 3 - W.I.C.



Dimensions: 6'11" x 7'11"
Area: 36 sq. ft
Counted as living area: Yes

Heated: Yes
Finished: Yes
Enclosed: Yes
Contiguous: Yes
Permitted: Yes
Wet space: No
Addition: No
Conversion: No

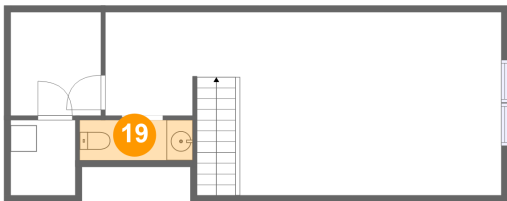
18 Floor 3 - Family Room



Dimensions: 30'3" x 14'0"
Area: 247 sq. ft
Counted as living area: Yes

Heated: Yes
Finished: Yes
Enclosed: Yes
Contiguous: Yes
Permitted: Yes
Wet space: No
Addition: No
Conversion: No

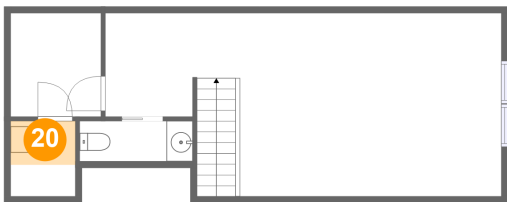
19 Floor 3 - WC



Dimensions: 8'7" x 3'1"
Area: 26 sq. ft
Counted as living area: Yes

Heated: Yes
Finished: Yes
Enclosed: Yes
Contiguous: Yes
Permitted: Yes
Wet space: Yes
Addition: No
Conversion: No

20 Floor 3 - Electrical Room



Dimensions: 4'11" x 5'9"
Area: 16 sq. ft
Counted as living area: No

Heated: No
Finished: No
Enclosed: Yes
Contiguous: Yes
Permitted: Yes
Wet space: No
Addition: No
Conversion: No