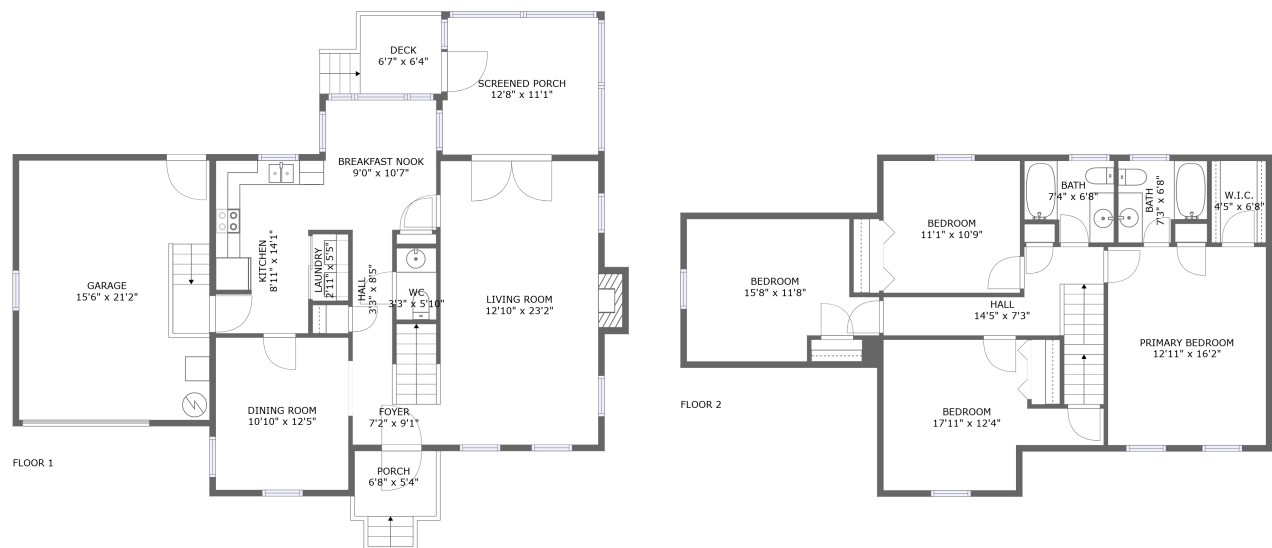


Home report

14107 Laurel Trail Place, Woodlake, Midlothian, Chesterfield County, Virginia, United States, 23112



Total Area: 1711 sq. ft

Floor 1: 810 sq. ft, Floor 2: 901 sq. ft

Excluded: Garage 329 sq. ft, Screened porch 139 sq. ft, Porch 45 sq. ft, Deck 53 sq. ft, Fireplace 11 sq. ft, Low ceiling 49 sq. ft, Walls: 179 sq. ft

Property summary

 **2** Floors

 **4** Bedrooms

 **2** Bathrooms

Home report

**14107 Laurel Trail Place, Woodlake, Midlothian, Chesterfield
County, Virginia, United States, 23112**



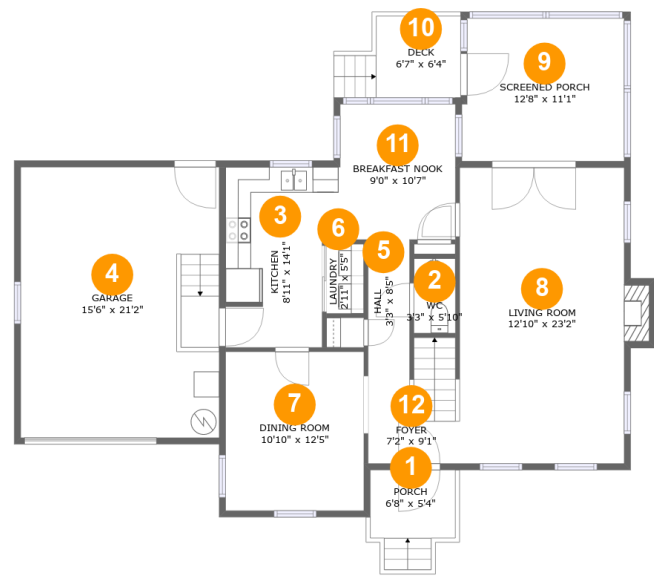
1
Half baths



1
Garages

Home report

14107 Laurel Trail Place, Woodlake, Midlothian, Chesterfield County, Virginia, United States, 23112



Room dimensions

Floor 1 Total:810sqft Excluded: 577sqft

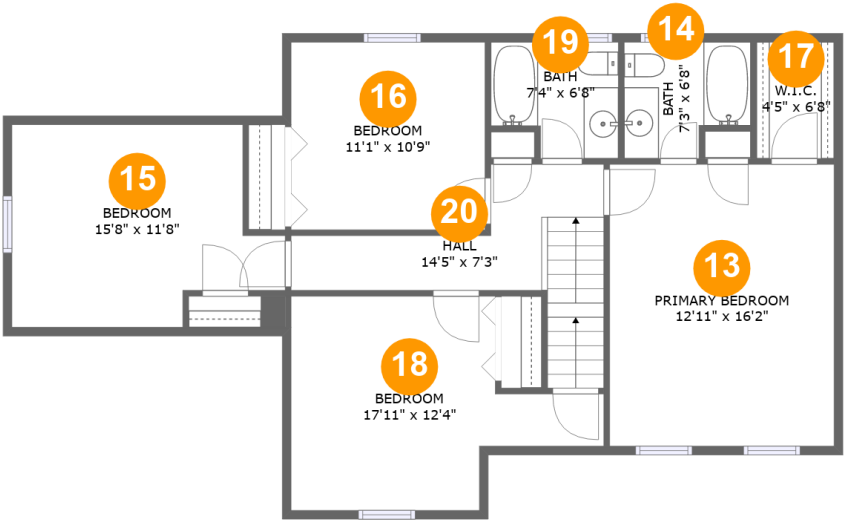
#		Max Dimensions	sqft	Included
1	Porch	6'8" x 5'4"	45 sq. ft	No
2	WC	3'3" x 5'10"	19 sq. ft	Yes
3	Kitchen	8'11" x 14'1"	113 sq. ft	Yes
4	Garage	15'6" x 21'2"	329 sq. ft	No
5	Hall	3'3" x 8'5"	27 sq. ft	Yes
6	Laundry	2'11" x 5'5"	16 sq. ft	Yes
7	Dining Room	10'10" x 12'5"	135 sq. ft	Yes
8	Living Room	12'10" x 23'2"	307 sq. ft	Yes
9	Screened Porch	12'8" x 11'1"	139 sq. ft	No
10	Deck	6'7" x 6'4"	53 sq. ft	No
11	Breakfast Nook	9'0" x 10'7"	96 sq. ft	Yes

Home report

14107 Laurel Trail Place, Woodlake, Midlothian, Chesterfield
County, Virginia, United States, 23112

#		Max Dimensions	sqft	Included
12	Foyer	7'2" x 9'1"	66 sq. ft	Yes

14107 Laurel Trail Place, Woodlake, Midlothian, Chesterfield County, Virginia, United States, 23112



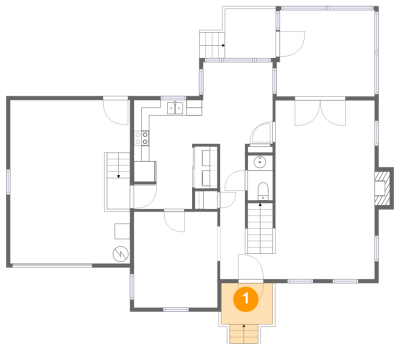
Room dimensions

Floor 2 Total:901sqft Excluded: 49sqft

#		Max Dimensions	sqft	Included
13	Primary Bedroom	12'11" x 16'2"	209 sq. ft	Yes
14	Bath	7'3" x 6'8"	43 sq. ft	Yes
15	Bedroom	15'8" x 11'8"	106 sq. ft	Yes
16	Bedroom	11'1" x 10'9"	120 sq. ft	Yes
17	W.I.C.	4'5" x 6'8"	30 sq. ft	Yes
18	Bedroom	17'11" x 12'4"	160 sq. ft	Yes
19	Bath	7'4" x 6'8"	44 sq. ft	Yes
20	Hall	14'5" x 7'3"	101 sq. ft	Yes

14107 Laurel Trail Place, Woodlake, Midlothian, Chesterfield
County, Virginia, United States, 23112

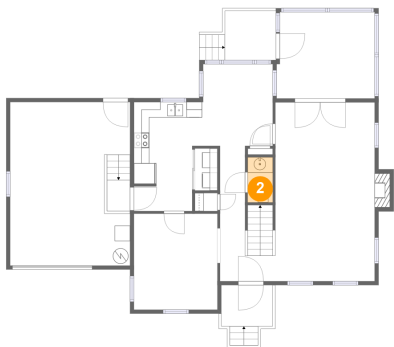
1 Floor 1 - Porch



Max Dimensions: 6'8" x 5'4"
Calculated Area: 45 sq. ft
Included: No

Heated: No
Finished: Yes
Enclosed: No
Contiguous: Yes
Permitted: Yes
Wet space: No
Addition: No
Conversion: No

2 Floor 1 - WC

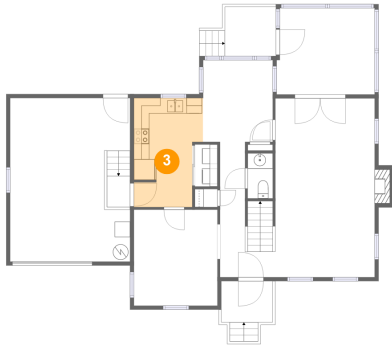


Max Dimensions: 3'3" x 5'10"
Calculated Area: 19 sq. ft
Included: Yes

Heated: Yes
Finished: Yes
Enclosed: Yes
Contiguous: Yes
Permitted: Yes
Wet space: Yes
Addition: No
Conversion: No

14107 Laurel Trail Place, Woodlake, Midlothian, Chesterfield
County, Virginia, United States, 23112

3 Floor 1 - Kitchen



Max Dimensions: 8'11" x 14'1"
Calculated Area: 113 sq. ft
Included: Yes

Heated: Yes
Finished: Yes
Enclosed: Yes
Contiguous: Yes
Permitted: Yes
Wet space: No
Addition: No
Conversion: No

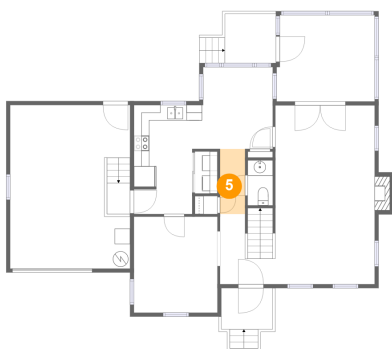
4 Floor 1 - Garage



Max Dimensions: 15'6" x 21'2"
Calculated Area: 329 sq. ft
Included: No

Heated: No
Finished: No
Enclosed: Yes
Contiguous: Yes
Permitted: Yes
Wet space: No
Addition: No
Conversion: No

5 Floor 1 - Hall

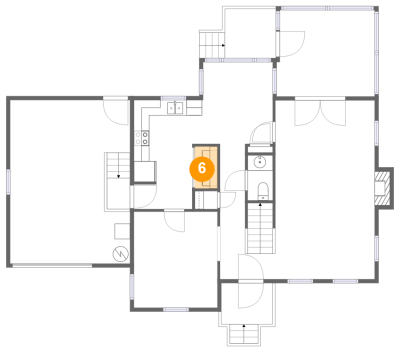


Max Dimensions: 3'3" x 8'5"
Calculated Area: 27 sq. ft
Included: Yes

Heated: Yes
Finished: Yes
Enclosed: Yes
Contiguous: Yes
Permitted: Yes
Wet space: No
Addition: No
Conversion: No

14107 Laurel Trail Place, Woodlake, Midlothian, Chesterfield
County, Virginia, United States, 23112

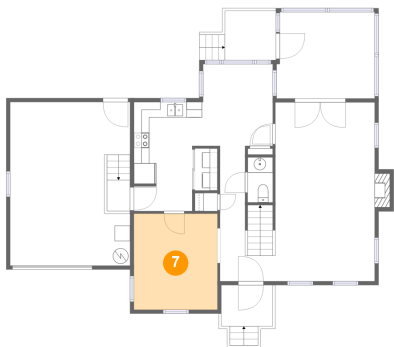
6 Floor 1 - Laundry



Max Dimensions: 2'11" x 5'5"
Calculated Area: 16 sq. ft
Included: Yes

Heated: Yes
Finished: Yes
Enclosed: Yes
Contiguous: Yes
Permitted: Yes
Wet space: No
Addition: No
Conversion: No

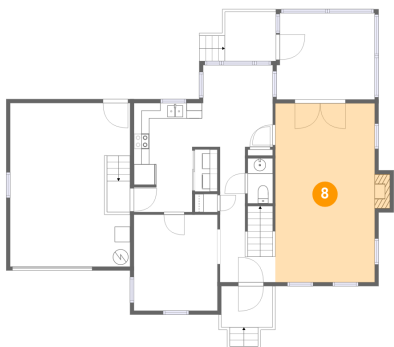
7 Floor 1 - Dining Room



Max Dimensions: 10'10" x 12'5"
Calculated Area: 135 sq. ft
Included: Yes

Heated: Yes
Finished: Yes
Enclosed: Yes
Contiguous: Yes
Permitted: Yes
Wet space: No
Addition: No
Conversion: No

8 Floor 1 - Living Room

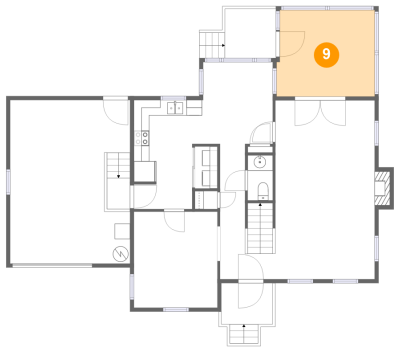


Max Dimensions: 12'10" x 23'2"
Calculated Area: 307 sq. ft
Included: Yes

Heated: Yes
Finished: Yes
Enclosed: Yes
Contiguous: Yes
Permitted: Yes
Wet space: No
Addition: No
Conversion: No

14107 Laurel Trail Place, Woodlake, Midlothian, Chesterfield
County, Virginia, United States, 23112

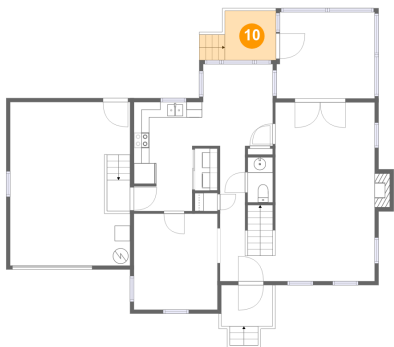
9 Floor 1 - Screened Porch



Max Dimensions: 12'8" x 11'1"
Calculated Area: 139 sq. ft
Included: No

Heated: No
Finished: Yes
Enclosed: No
Contiguous: Yes
Permitted: Yes
Wet space: No
Addition: No
Conversion: No

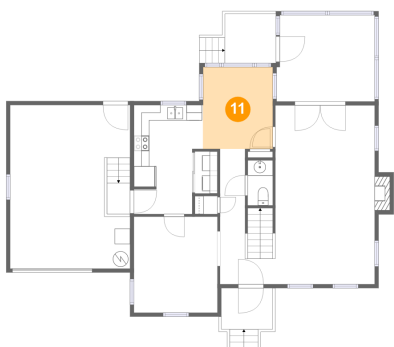
10 Floor 1 - Deck



Max Dimensions: 6'7" x 6'4"
Calculated Area: 53 sq. ft
Included: No

Heated: No
Finished: Yes
Enclosed: No
Contiguous: Yes
Permitted: Yes
Wet space: No
Addition: No
Conversion: No

11 Floor 1 - Breakfast Nook

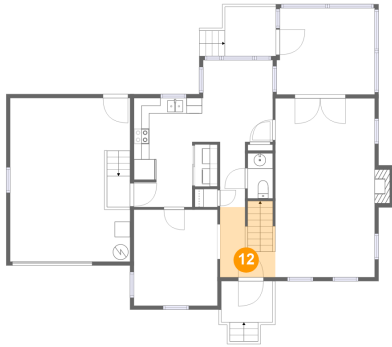


Max Dimensions: 9'0" x 10'7"
Calculated Area: 96 sq. ft
Included: Yes

Heated: Yes
Finished: Yes
Enclosed: Yes
Contiguous: Yes
Permitted: Yes
Wet space: No
Addition: No
Conversion: No

14107 Laurel Trail Place, Woodlake, Midlothian, Chesterfield
County, Virginia, United States, 23112

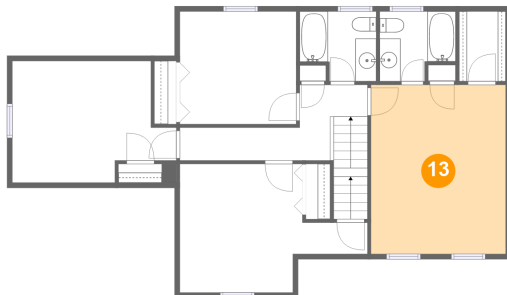
12 Floor 1 - Foyer



Max Dimensions: 7'2" x 9'1"
Calculated Area: 66 sq. ft
Included: Yes

Heated: Yes
Finished: Yes
Enclosed: Yes
Contiguous: Yes
Permitted: Yes
Wet space: No
Addition: No
Conversion: No

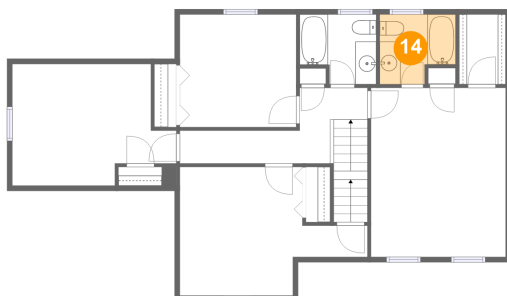
13 Floor 2 - Primary Bedroom



Max Dimensions: 12'11" x 16'2"
Calculated Area: 209 sq. ft
Included: Yes

Heated: Yes
Finished: Yes
Enclosed: Yes
Contiguous: Yes
Permitted: Yes
Wet space: No
Addition: No
Conversion: No

14 Floor 2 - Bath

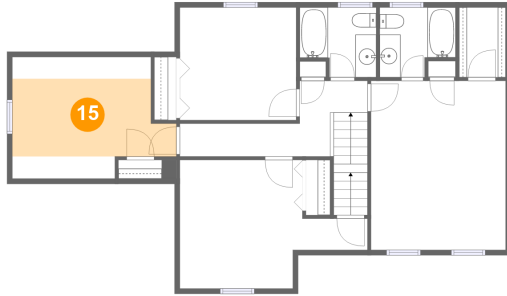


Max Dimensions: 7'3" x 6'8"
Calculated Area: 43 sq. ft
Included: Yes

Heated: Yes
Finished: Yes
Enclosed: Yes
Contiguous: Yes
Permitted: Yes
Wet space: Yes
Addition: No
Conversion: No

14107 Laurel Trail Place, Woodlake, Midlothian, Chesterfield
County, Virginia, United States, 23112

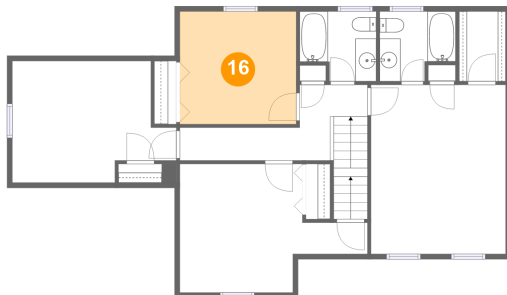
15 Floor 2 - Bedroom



Max Dimensions: 15'8" x 11'8"
Calculated Area: 106 sq. ft
Included: Yes

Heated: Yes
Finished: Yes
Enclosed: Yes
Contiguous: Yes
Permitted: Yes
Wet space: No
Addition: No
Conversion: No

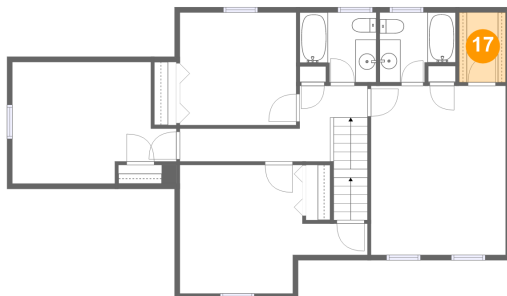
16 Floor 2 - Bedroom



Max Dimensions: 11'1" x 10'9"
Calculated Area: 120 sq. ft
Included: Yes

Heated: Yes
Finished: Yes
Enclosed: Yes
Contiguous: Yes
Permitted: Yes
Wet space: No
Addition: No
Conversion: No

17 Floor 2 - W.I.C.



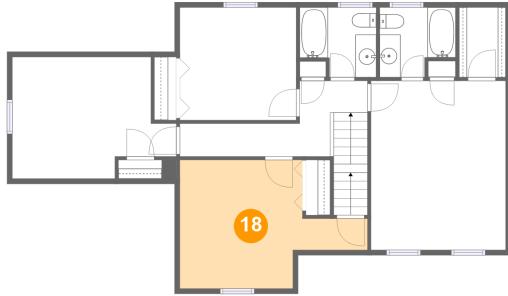
Max Dimensions: 4'5" x 6'8"
Calculated Area: 30 sq. ft
Included: Yes

Heated: Yes
Finished: Yes
Enclosed: Yes
Contiguous: Yes
Permitted: Yes
Wet space: No
Addition: No
Conversion: No

Home report

14107 Laurel Trail Place, Woodlake, Midlothian, Chesterfield
County, Virginia, United States, 23112

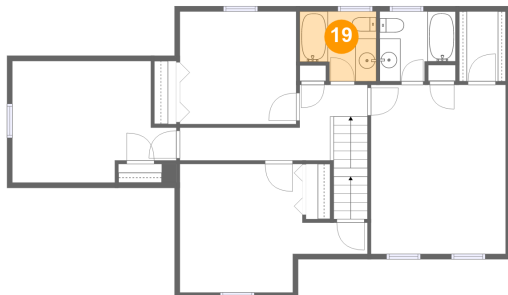
18 Floor 2 - Bedroom



Max Dimensions: 17'11" x 12'4"
Calculated Area: 160 sq. ft
Included: Yes

Heated: Yes
Finished: Yes
Enclosed: Yes
Contiguous: Yes
Permitted: Yes
Wet space: No
Addition: No
Conversion: No

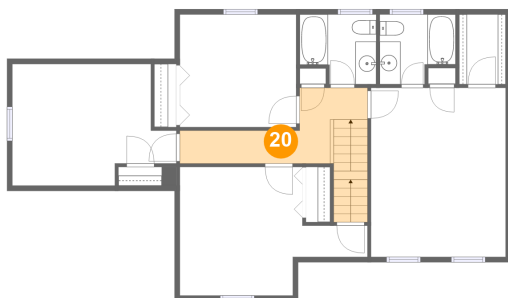
19 Floor 2 - Bath



Max Dimensions: 7'4" x 6'8"
Calculated Area: 44 sq. ft
Included: Yes

Heated: Yes
Finished: Yes
Enclosed: Yes
Contiguous: Yes
Permitted: Yes
Wet space: Yes
Addition: No
Conversion: No

20 Floor 2 - Hall



Max Dimensions: 14'5" x 7'3"
Calculated Area: 101 sq. ft
Included: Yes

Heated: Yes
Finished: Yes
Enclosed: Yes
Contiguous: Yes
Permitted: Yes
Wet space: No
Addition: No
Conversion: No