



Home report


980 Lucille Way, Orléans Avalon - Notting Gate - Fallingbrook - Gardenway South, Orléans, Ontario, Canada, K4A 4J2





Property summary


 **1** Garages


 **4** Bedrooms

 **2** Bathrooms

 **1** Half baths

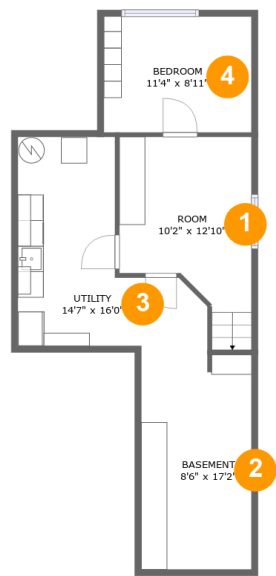
 **3** Floors

 **1,482** Gross living area sqft

 **2,379** Total sqft

Home report

980 Lucille Way, Orléans Avalon - Notting Gate - Fallingbrook - Gardenway South, Orléans, Ontario, Canada, K4A 4J2



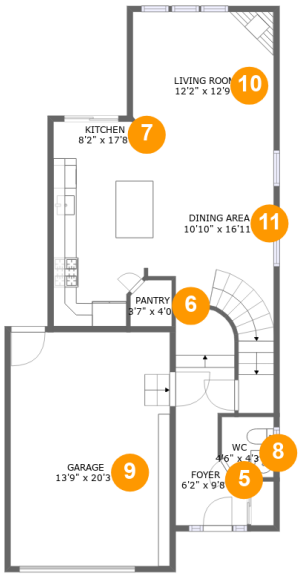
Room dimensions

Floor 1 Total sqft: 598 Living area: 0

#		Dimensions	sqft	Counted as living area
1	Room	10'2" x 12'10"	127 sq. ft	No
2	Basement	8'6" x 17'2"	143 sq. ft	No
3	Utility	14'7" x 16'0"	155 sq. ft	No
4	Bedroom	11'4" x 8'11"	101 sq. ft	No

Home report

980 Lucille Way, Orléans Avalon - Notting Gate - Fallingbrook - Gardenway South, Orléans, Ontario, Canada, K4A 4J2



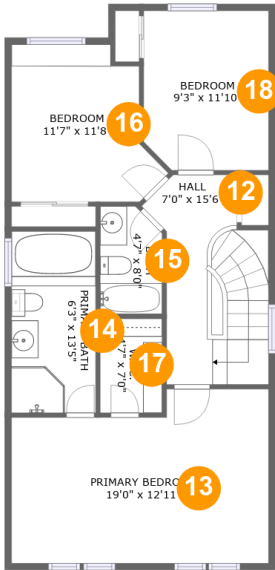
Room dimensions

Floor 2 Total sqft: 961 Living area: 662

#		Dimensions	sqft	Counted as living area
5	Foyer	6'2" x 9'8"	46 sq. ft	Yes
6	Pantry	3'7" x 4'0"	13 sq. ft	Yes
7	Kitchen	8'2" x 17'8"	136 sq. ft	Yes
8	WC	4'6" x 4'3"	22 sq. ft	Yes
9	Garage	13'9" x 20'3"	278 sq. ft	No
10	Living Room	12'2" x 12'9"	151 sq. ft	Yes
11	Dining Area	10'10" x 16'11"	206 sq. ft	Yes

Home report

980 Lucille Way, Orléans Avalon - Notting Gate - Fallingbrook - Gardenway South, Orléans, Ontario, Canada, K4A 4J2



Room dimensions

Floor 3

Total sqft: 820 Living area: 820

#		Dimensions	sqft	Counted as living area
12	Hall	7'0" x 15'6"	111 sq. ft	Yes
13	Primary Bedroom	19'0" x 12'11"	221 sq. ft	Yes
14	Primary Bath	6'3" x 13'5"	84 sq. ft	Yes
15	Bath	4'7" x 8'0"	35 sq. ft	Yes
16	Bedroom	11'7" x 11'8"	111 sq. ft	Yes
17	W.I.C.	4'7" x 7'0"	32 sq. ft	Yes
18	Bedroom	9'3" x 11'10"	107 sq. ft	Yes

980 Lucille Way, Orléans Avalon - Notting Gate - Fallingbrook -
Gardenway South, Orléans, Ontario, Canada, K4A 4J2

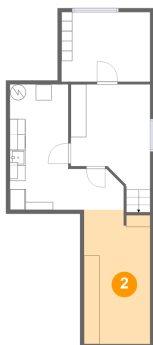
1 Floor 1 - Room



Dimensions: 10'2" x 12'10"
Area: 127 sq. ft
Counted as living area: No

Heated: Yes
Finished: Yes
Enclosed: Yes
Contiguous: No
Permitted: Yes
Wet space: No
Addition: No
Conversion: No

2 Floor 1 - Basement



Dimensions: 8'6" x 17'2"
Area: 143 sq. ft
Counted as living area: No

Heated: Yes
Finished: No
Enclosed: Yes
Contiguous: Yes
Permitted: Yes
Wet space: No
Addition: No
Conversion: No

**980 Lucille Way, Orléans Avalon - Notting Gate - Fallingbrook -
Gardenway South, Orléans, Ontario, Canada, K4A 4J2**

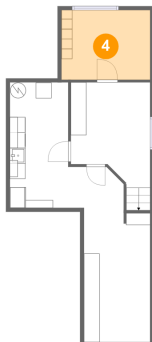
3 Floor 1 - Utility



Dimensions: 14'7" x 16'0"
Area: 155 sq. ft
Counted as living area: No

Heated: Yes
Finished: No
Enclosed: Yes
Contiguous: Yes
Permitted: Yes
Wet space: No
Addition: No
Conversion: No

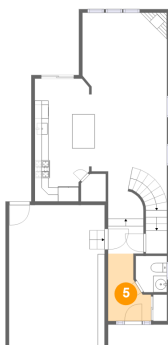
4 Floor 1 - Bedroom



Dimensions: 11'4" x 8'11"
Area: 101 sq. ft
Counted as living area: No

Heated: Yes
Finished: Yes
Enclosed: Yes
Contiguous: No
Permitted: Yes
Wet space: No
Addition: No
Conversion: No

5 Floor 2 - Foyer

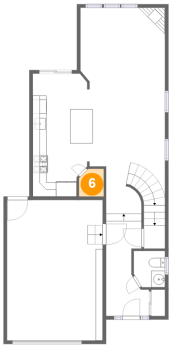


Dimensions: 6'2" x 9'8"
Area: 46 sq. ft
Counted as living area: Yes

Heated: Yes
Finished: Yes
Enclosed: Yes
Contiguous: Yes
Permitted: Yes
Wet space: No
Addition: No
Conversion: No

980 Lucille Way, Orléans Avalon - Notting Gate - Fallingbrook - Gardenway South, Orléans, Ontario, Canada, K4A 4J2

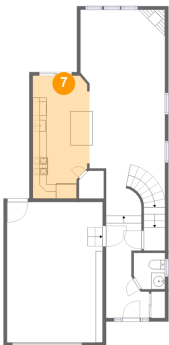
6 Floor 2 - Pantry



Dimensions: 3'7" x 4'0"
Area: 13 sq. ft
Counted as living area: Yes

Heated: Yes
Finished: Yes
Enclosed: Yes
Contiguous: Yes
Permitted: Yes
Wet space: No
Addition: No
Conversion: No

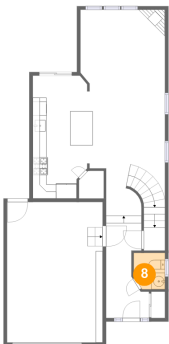
7 Floor 2 - Kitchen



Dimensions: 8'2" x 17'8"
Area: 136 sq. ft
Counted as living area: Yes

Heated: Yes
Finished: Yes
Enclosed: Yes
Contiguous: Yes
Permitted: Yes
Wet space: No
Addition: No
Conversion: No

8 Floor 2 - WC

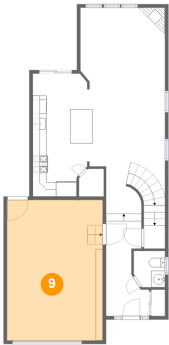


Dimensions: 4'6" x 4'3"
Area: 22 sq. ft
Counted as living area: Yes

Heated: Yes
Finished: Yes
Enclosed: Yes
Contiguous: Yes
Permitted: Yes
Wet space: Yes
Addition: No
Conversion: No

980 Lucille Way, Orléans Avalon - Notting Gate - Fallingbrook -
Gardenway South, Orléans, Ontario, Canada, K4A 4J2

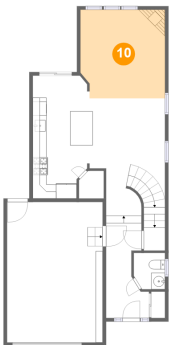
9 Floor 2 - Garage



Dimensions: 13'9" x 20'3"
Area: 278 sq. ft
Counted as living area: No

Heated: No
Finished: No
Enclosed: Yes
Contiguous: Yes
Permitted: Yes
Wet space: No
Addition: No
Conversion: No

10 Floor 2 - Living Room



Dimensions: 12'2" x 12'9"
Area: 151 sq. ft
Counted as living area: Yes

Heated: Yes
Finished: Yes
Enclosed: Yes
Contiguous: Yes
Permitted: Yes
Wet space: No
Addition: No
Conversion: No

11 Floor 2 - Dining Area

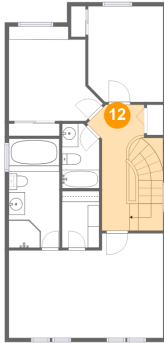


Dimensions: 10'10" x 16'11"
Area: 206 sq. ft
Counted as living area: Yes

Heated: Yes
Finished: Yes
Enclosed: Yes
Contiguous: Yes
Permitted: Yes
Wet space: No
Addition: No
Conversion: No

980 Lucille Way, Orléans Avalon - Notting Gate - Fallingbrook -
Gardenway South, Orléans, Ontario, Canada, K4A 4J2

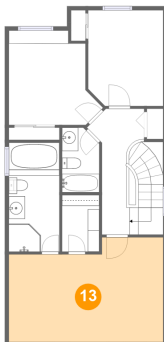
12 Floor 3 - Hall



Dimensions: 7'0" x 15'6"
Area: 111 sq. ft
Counted as living area: Yes

Heated: Yes
Finished: Yes
Enclosed: Yes
Contiguous: Yes
Permitted: Yes
Wet space: No
Addition: No
Conversion: No

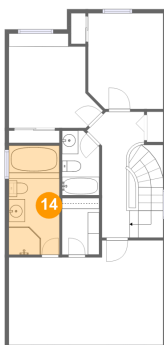
13 Floor 3 - Primary Bedroom



Dimensions: 19'0" x 12'11"
Area: 221 sq. ft
Counted as living area: Yes

Heated: Yes
Finished: Yes
Enclosed: Yes
Contiguous: Yes
Permitted: Yes
Wet space: No
Addition: No
Conversion: No

14 Floor 3 - Primary Bath

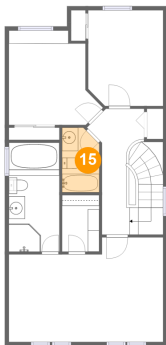


Dimensions: 6'3" x 13'5"
Area: 84 sq. ft
Counted as living area: Yes

Heated: Yes
Finished: Yes
Enclosed: Yes
Contiguous: Yes
Permitted: Yes
Wet space: Yes
Addition: No
Conversion: No

980 Lucille Way, Orléans Avalon - Notting Gate - Fallingbrook -
Gardenway South, Orléans, Ontario, Canada, K4A 4J2

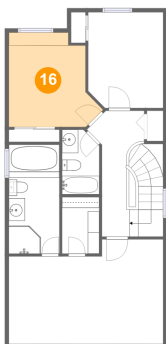
15 Floor 3 - Bath



Dimensions: 4'7" x 8'0"
Area: 35 sq. ft
Counted as living area: Yes

Heated: Yes
Finished: Yes
Enclosed: Yes
Contiguous: Yes
Permitted: Yes
Wet space: Yes
Addition: No
Conversion: No

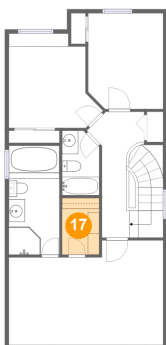
16 Floor 3 - Bedroom



Dimensions: 11'7" x 11'8"
Area: 111 sq. ft
Counted as living area: Yes

Heated: Yes
Finished: Yes
Enclosed: Yes
Contiguous: Yes
Permitted: Yes
Wet space: No
Addition: No
Conversion: No

17 Floor 3 - W.I.C.

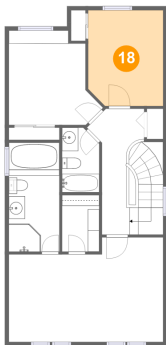


Dimensions: 4'7" x 7'0"
Area: 32 sq. ft
Counted as living area: Yes

Heated: Yes
Finished: Yes
Enclosed: Yes
Contiguous: Yes
Permitted: Yes
Wet space: No
Addition: No
Conversion: No

980 Lucille Way, Orléans Avalon - Notting Gate - Fallingbrook -
Gardenway South, Orléans, Ontario, Canada, K4A 4J2

18 Floor 3 - Bedroom



Dimensions: 9'3" x 11'10"
Area: 107 sq. ft
Counted as living area: Yes

Heated: Yes
Finished: Yes
Enclosed: Yes
Contiguous: Yes
Permitted: Yes
Wet space: No
Addition: No
Conversion: No