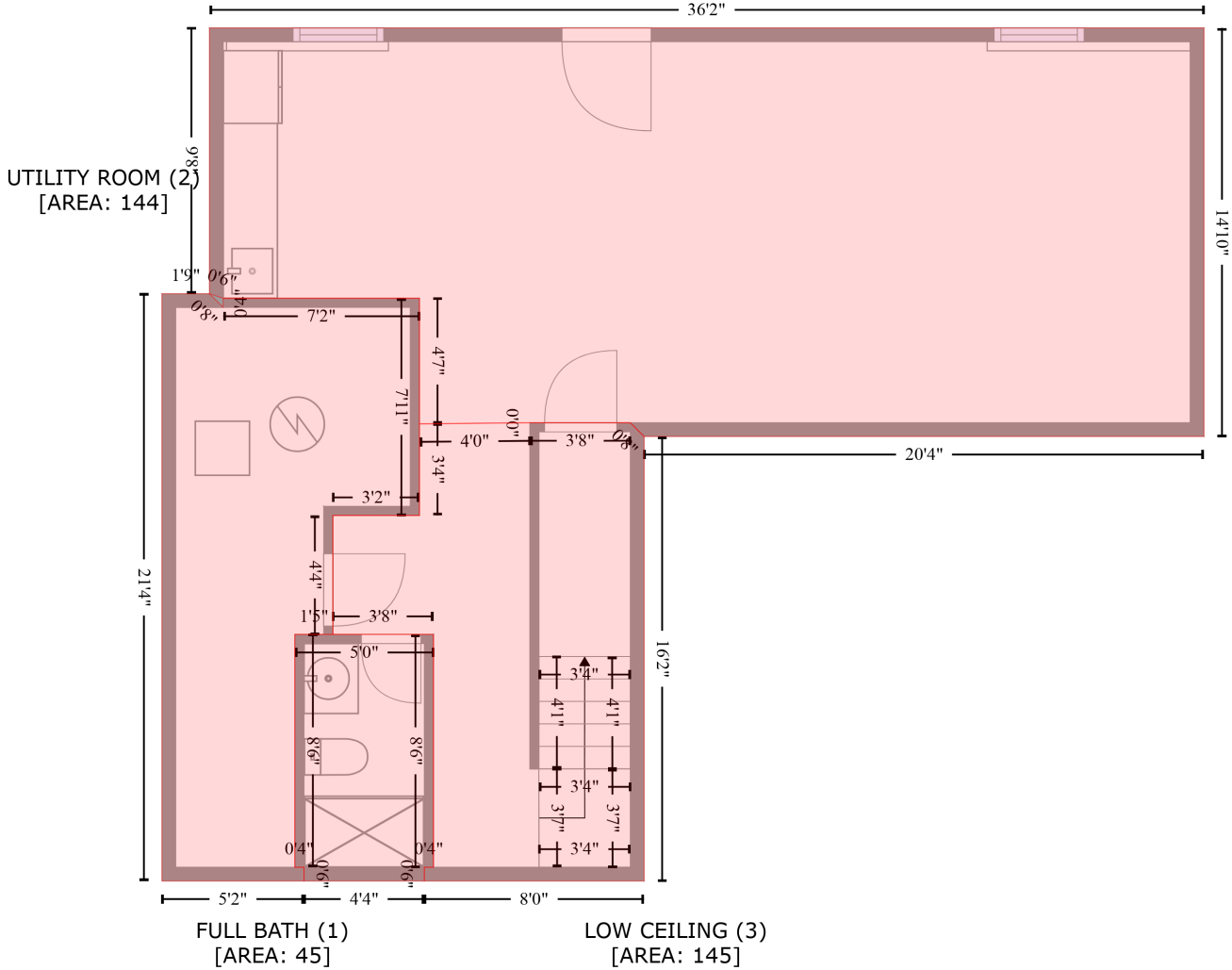


6915 Drury Drive, Louisville, Jefferson County, Kentucky, United States, 40229

Gross Living Area: 1709 sq. ft

BASEMENT (4)
[AREA: 494]



Space	Area (sq. ft)	Calculation <small>Coordinate Polygon Area Algorithm using inches</small>
FULL BATH (Non-living area)	45	$-((129.6 + 129.6) * (350.2 - 451.7) + (129.6 + 125.6) * (451.7 - 451.7) + (125.6 + 125.6) * (451.7 - 457.7) + (125.6 + 73.1) * (457.7 - 457.7) + (73.1 + 73.1) * (457.7 - 451.7) + (73.1 + 69.1) * (451.7 - 451.7) + (69.1 + 69.1) * (451.7 - 350.2) + (69.1 + 129.6) * (350.2 - 350.2)) * 0.5 * 0.00694$
UTILITY ROOM (Non-living area)	144	$-((31.9 + 37.8) * (201.6 - 207.5) + (37.8 + 37.9) * (207.5 - 203.6) + (37.9 + 123.5) * (203.6 - 203.6) + (123.5 + 123.5) * (203.6 - 298.3) + (123.5 + 85.7) * (298.3 - 298.3) + (85.7 + 85.7) * (298.3 - 350.2) + (85.7 + 69.1) * (350.2 - 350.2) + (69.1 + 69.1) * (350.2 - 451.7) + (69.1 + 73.1) * (451.7 - 451.7) + (73.1 + 73.1) * (451.7 - 457.7) + (73.1 + 11.2) * (457.7 - 457.7) + (11.2 + 11.2) * (457.7 - 201.6) + (11.2 + 31.9) * (201.6 - 201.6)) * 0.5 * 0.00694$
LOW CEILING	145	$-((215.4 + 221.4) * (257.9 - 263.9) + (221.4 + 221.4) * (263.9 - 457.7) + (221.4 + 125.6) * (457.7 -$

6915 Drury Drive, Louisville, Jefferson County, Kentucky, United States, 40229

Gross Living Area: 1709 sq. ft

Space	Area (sq. ft)	Calculation <small>Coordinate Polygon Area Algorithm using inches</small>
(Non-living area)		$457.7 + (125.6 + 125.6) * (457.7 - 451.7) + (125.6 + 129.6) * (451.7 - 451.7) + (129.6 + 129.6) * (451.7 - 350.2) + (129.6 + 85.7) * (350.2 - 350.2) + (85.7 + 85.7) * (350.2 - 298.3) + (85.7 + 123.5) * (298.3 - 298.3) + (123.5 + 123.5) * (298.3 - 258.3) + (123.5 + 171.7) * (258.3 - 257.9) + (171.7 + 171.7) * (257.9 - 257.9) + (171.7 + 215.4) * (257.9 - 257.9) * 0.5 * 0.00694$
BASEMENT (Non-living area)	494	$-((465.6 + 465.6) * (85.7 - 263.9) + (465.6 + 221.4) * (263.9 - 263.9) + (221.4 + 215.4) * (263.9 - 257.9) + (215.4 + 171.6) * (257.9 - 257.9) + (171.6 + 171.6) * (257.9 - 257.9) + (171.6 + 123.5) * (257.9 - 258.3) + (123.5 + 123.5) * (258.3 - 203.6) + (123.5 + 37.9) * (203.6 - 203.6) + (37.9 + 31.9) * (203.6 - 201.6) + (31.9 + 31.9) * (201.6 - 85.7) + (31.9 + 465.6) * (85.7 - 85.7)) * 0.5 * 0.00694$

6915 Drury Drive, Louisville, Jefferson County, Kentucky, United States, 40229

Gross Living Area: 1709 sq. ft

FLOOR 2
[AREA: 845]

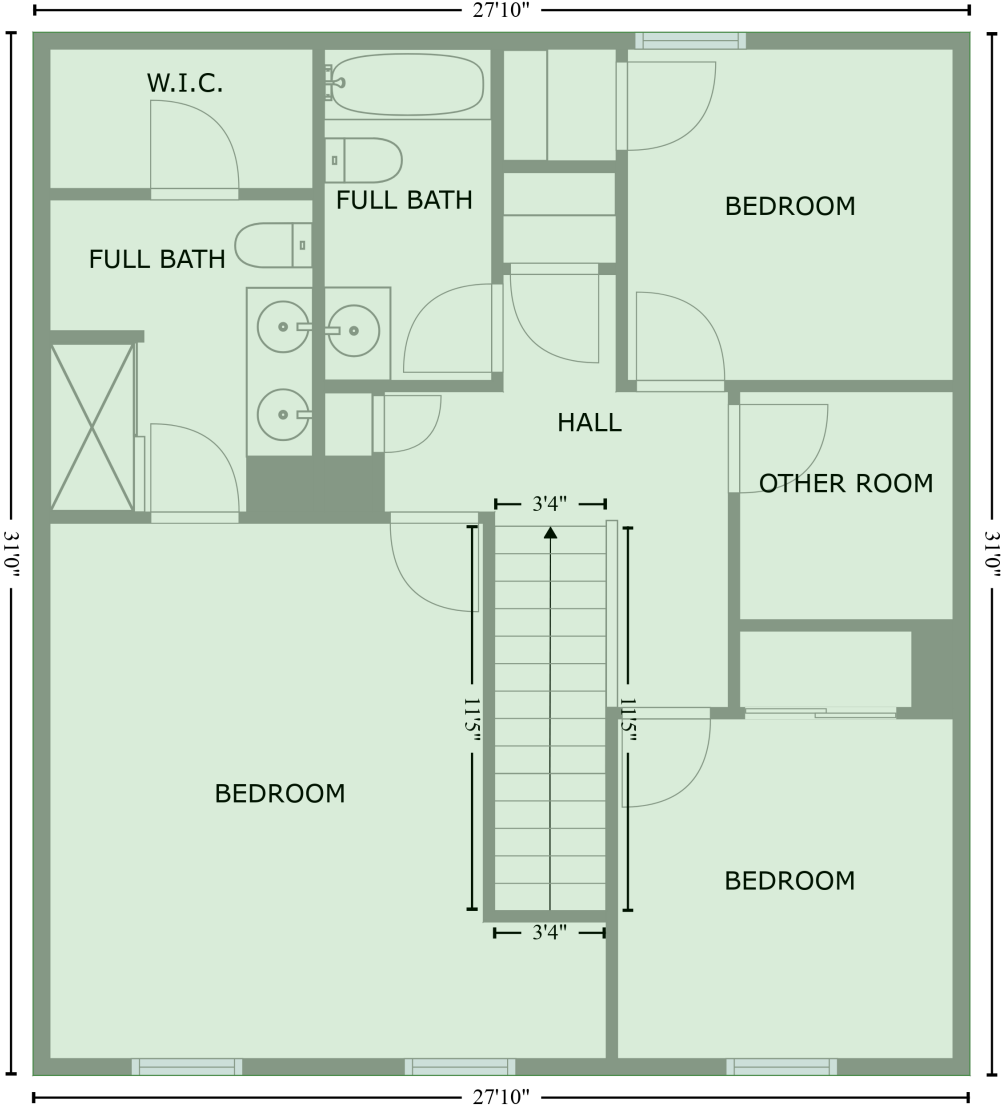


Space	Area (sq. ft)	Calculation <small>Coordinate Polygon Area Algorithm using inches</small>
FLOOR 2 (Living area)	845	$-((465.6 + 465.6) * (85.7 - 263.9) + (465.6 + 221.4) * (263.9 - 263.9) + (221.4 + 221.4) * (263.9 - 457.7) + (221.4 + 11.2) * (457.7 - 457.7) + (11.2 + 11.2) * (457.7 - 85.7) + (11.2 + 465.6) * (85.7 - 85.7)) * 0.5 * 0.00694$

6915 Drury Drive, Louisville, Jefferson County, Kentucky, United States, 40229

Gross Living Area: 1709 sq. ft

FLOOR 3
[AREA: 864]



Space	Area (sq. ft)	Calculation <small>Coordinate Polygon Area Algorithm using inches</small>
FLOOR 3 (Living area)	864	$-((345.5 + 345.5) * (85.7 - 457.7) + (345.5 + 11.2) * (457.7 - 457.7) + (11.2 + 11.2) * (457.7 - 85.7) + (11.2 + 345.5) * (85.7 - 85.7)) * 0.5 * 0.00694$