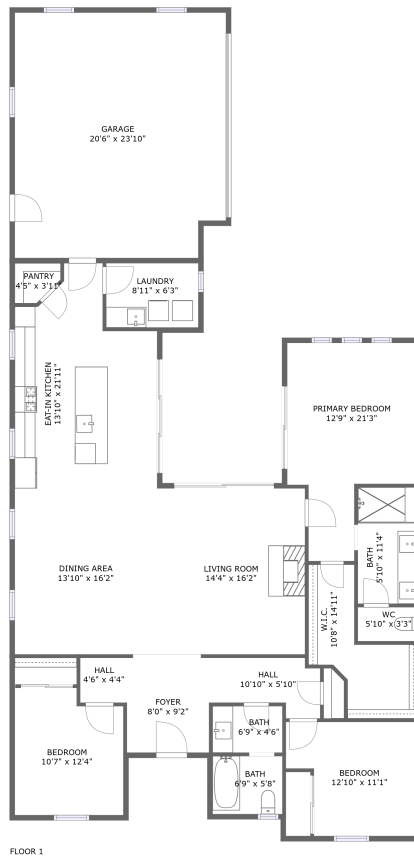



702 Brunello Lane, Paso Robles, San Luis Obispo County, California, United States, 93446



Property summary


 **1** Garages

 **3** Bedrooms

 **2** Bathrooms

 **0** Half baths

 **1** Floors

 **1,844**
Gross living
area sqft

 **2,360**
Total sqft

702 Brunello Lane, Paso Robles, San Luis Obispo County, California, United States, 93446



Room dimensions

Floor 1

Total sqft: 2360 Living area: 1844

| # | | Dimensions | sqft | Counted as living area |
|----|-----------------|-----------------|------------|------------------------|
| 1 | Garage | 20'6" x 23'10" | 480 sq. ft | No |
| 2 | Primary Bedroom | 12'9" x 21'3" | 208 sq. ft | Yes |
| 3 | Living Room | 14'4" x 16'2" | 232 sq. ft | Yes |
| 4 | Dining Area | 13'10" x 16'2" | 223 sq. ft | Yes |
| 5 | Bedroom | 12'10" x 11'1" | 125 sq. ft | Yes |
| 6 | Hall | 4'6" x 4'4" | 20 sq. ft | Yes |
| 7 | Eat-in Kitchen | 13'10" x 21'11" | 251 sq. ft | Yes |
| 8 | W.I.C. | 10'8" x 14'11" | 92 sq. ft | Yes |
| 9 | Laundry | 8'11" x 6'3" | 56 sq. ft | Yes |
| 10 | Bath | 6'9" x 5'8" | 38 sq. ft | Yes |
| 11 | Foyer | 8'0" x 9'2" | 74 sq. ft | Yes |

Scan captured on Wed, 05 Feb 2025 18:52:41 GMT

Information is calculated by Cubicasa technology deemed highly reliable but not guaranteed.

**702 Brunello Lane, Paso Robles, San Luis Obispo
County, California, United States, 93446**

| # | | Dimensions | sqft | Counted as living area |
|----|---------|----------------|------------|------------------------|
| 12 | Bedroom | 10'7" x 12'4" | 123 sq. ft | Yes |
| 13 | Hall | 10'10" x 5'10" | 51 sq. ft | Yes |
| 14 | Bath | 6'9" x 4'6" | 31 sq. ft | Yes |
| 15 | WC | 5'10" x 3'3" | 19 sq. ft | Yes |
| 16 | Pantry | 4'5" x 3'11" | 15 sq. ft | Yes |
| 17 | Bath | 5'10" x 11'4" | 66 sq. ft | Yes |

702 Brunello Lane, Paso Robles, San Luis Obispo County, California, United States, 93446

1 Floor 1 - Garage



Dimensions: 20'6" x 23'10"
Area: 480 sq. ft
Counted as living area: No

Heated: No
Finished: No
Enclosed: Yes
Contiguous: Yes
Permitted: Yes
Wet space: No
Addition: No
Conversion: No

2 Floor 1 - Primary Bedroom



Dimensions: 12'9" x 21'3"
Area: 208 sq. ft
Counted as living area: Yes

Heated: Yes
Finished: Yes
Enclosed: Yes
Contiguous: Yes
Permitted: Yes
Wet space: No
Addition: No
Conversion: No

702 Brunello Lane, Paso Robles, San Luis Obispo County, California, United States, 93446

3 Floor 1 - Living Room



Dimensions: 14'4" x 16'2"
Area: 232 sq. ft
Counted as living area: Yes

Heated: Yes
Finished: Yes
Enclosed: Yes
Contiguous: Yes
Permitted: Yes
Wet space: No
Addition: No
Conversion: No

4 Floor 1 - Dining Area



Dimensions: 13'10" x 16'2"
Area: 223 sq. ft
Counted as living area: Yes

Heated: Yes
Finished: Yes
Enclosed: Yes
Contiguous: Yes
Permitted: Yes
Wet space: No
Addition: No
Conversion: No

5 Floor 1 - Bedroom



Dimensions: 12'10" x 11'1"
Area: 125 sq. ft
Counted as living area: Yes

Heated: Yes
Finished: Yes
Enclosed: Yes
Contiguous: Yes
Permitted: Yes
Wet space: No
Addition: No
Conversion: No

702 Brunello Lane, Paso Robles, San Luis Obispo County, California, United States, 93446

6 Floor 1 - Hall



Dimensions: 4'6" x 4'4"
Area: 20 sq. ft
Counted as living area: Yes

Heated: Yes
Finished: Yes
Enclosed: Yes
Contiguous: Yes
Permitted: Yes
Wet space: No
Addition: No
Conversion: No

7 Floor 1 - Eat-in Kitchen



Dimensions: 13'10" x 21'11"
Area: 251 sq. ft
Counted as living area: Yes

Heated: Yes
Finished: Yes
Enclosed: Yes
Contiguous: Yes
Permitted: Yes
Wet space: No
Addition: No
Conversion: No

8 Floor 1 - W.I.C.



Dimensions: 10'8" x 14'11"
Area: 92 sq. ft
Counted as living area: Yes

Heated: Yes
Finished: Yes
Enclosed: Yes
Contiguous: Yes
Permitted: Yes
Wet space: No
Addition: No
Conversion: No

702 Brunello Lane, Paso Robles, San Luis Obispo County, California, United States, 93446

9 Floor 1 - Laundry



Dimensions: 8'11" x 6'3"
Area: 56 sq. ft
Counted as living area: Yes

Heated: Yes
Finished: Yes
Enclosed: Yes
Contiguous: Yes
Permitted: Yes
Wet space: No
Addition: No
Conversion: No

10 Floor 1 - Bath



Dimensions: 6'9" x 5'8"
Area: 38 sq. ft
Counted as living area: Yes

Heated: Yes
Finished: Yes
Enclosed: Yes
Contiguous: Yes
Permitted: Yes
Wet space: Yes
Addition: No
Conversion: No

11 Floor 1 - Foyer



Dimensions: 8'0" x 9'2"
Area: 74 sq. ft
Counted as living area: Yes

Heated: Yes
Finished: Yes
Enclosed: Yes
Contiguous: Yes
Permitted: Yes
Wet space: No
Addition: No
Conversion: No

702 Brunello Lane, Paso Robles, San Luis Obispo County, California, United States, 93446

12 Floor 1 - Bedroom



Dimensions: 10'7" x 12'4"
Area: 123 sq. ft
Counted as living area: Yes

Heated: Yes
Finished: Yes
Enclosed: Yes
Contiguous: Yes
Permitted: Yes
Wet space: No
Addition: No
Conversion: No

13 Floor 1 - Hall



Dimensions: 10'10" x 5'10"
Area: 51 sq. ft
Counted as living area: Yes

Heated: Yes
Finished: Yes
Enclosed: Yes
Contiguous: Yes
Permitted: Yes
Wet space: No
Addition: No
Conversion: No

14 Floor 1 - Bath



Dimensions: 6'9" x 4'6"
Area: 31 sq. ft
Counted as living area: Yes

Heated: Yes
Finished: Yes
Enclosed: Yes
Contiguous: Yes
Permitted: Yes
Wet space: Yes
Addition: No
Conversion: No

702 Brunello Lane, Paso Robles, San Luis Obispo County, California, United States, 93446

15 Floor 1 - WC



Dimensions: 5'10" x 3'3"
Area: 19 sq. ft
Counted as living area: Yes

Heated: Yes
Finished: Yes
Enclosed: Yes
Contiguous: Yes
Permitted: Yes
Wet space: Yes
Addition: No
Conversion: No

16 Floor 1 - Pantry



Dimensions: 4'5" x 3'11"
Area: 15 sq. ft
Counted as living area: Yes

Heated: Yes
Finished: Yes
Enclosed: Yes
Contiguous: Yes
Permitted: Yes
Wet space: No
Addition: No
Conversion: No

17 Floor 1 - Bath



Dimensions: 5'10" x 11'4"
Area: 66 sq. ft
Counted as living area: Yes

Heated: Yes
Finished: Yes
Enclosed: Yes
Contiguous: Yes
Permitted: Yes
Wet space: Yes
Addition: No
Conversion: No