

Home report

6378 Sandhurst Drive, Sugar Loaf Hills, Cave Spring, Roanoke,
Roanoke County, Virginia, United States, 24018



Total Area: 3516 sq. ft

Floor 1: 920 sq. ft, Floor 2: 1170 sq. ft, Floor 3: 1426 sq. ft

Excluded: Undefined 94 sq. ft, Garage 438 sq. ft, Patio 578 sq. ft, Porch 47 sq. ft, Open to below 58 sq. ft, Walls: 276 sq. ft

Property summary

**3** Floors

**6** Bedrooms

**3** Bathrooms

Home report

**6378 Sandhurst Drive, Sugar Loaf Hills, Cave Spring, Roanoke,
Roanoke County, Virginia, United States, 24018**



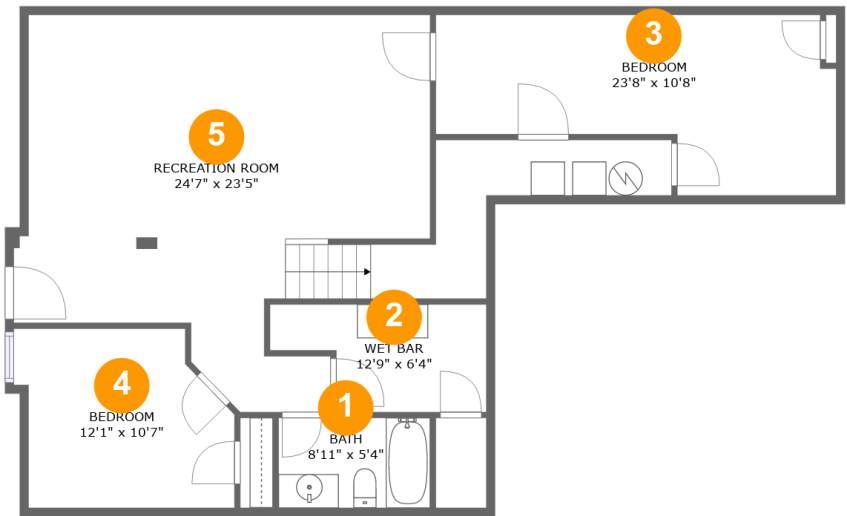
1
Half baths



1
Garages

Home report

6378 Sandhurst Drive, Sugar Loaf Hills, Cave Spring, Roanoke,
Roanoke County, Virginia, United States, 24018



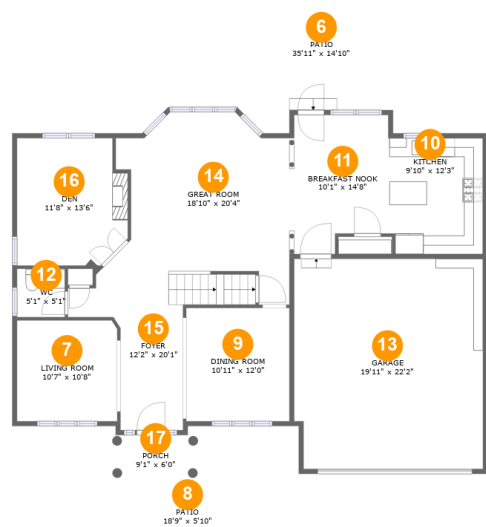
Room dimensions

Floor 1 Total:920sqft Excluded: 94sqft

#		Max Dimensions	sqft	Included
1	Bath	8'11" x 5'4"	47 sq. ft	Yes
2	Wet Bar	12'9" x 6'4"	67 sq. ft	Yes
3	Bedroom	23'8" x 10'8"	197 sq. ft	Yes
4	Bedroom	12'1" x 10'7"	121 sq. ft	Yes
5	Recreation Room	24'7" x 23'5"	439 sq. ft	Yes

Home report

6378 Sandhurst Drive, Sugar Loaf Hills, Cave Spring, Roanoke,
Roanoke County, Virginia, United States, 24018



Room dimensions

Floor 2 Total:1170sqft Excluded: 1063sqft

#		Max Dimensions	sqft	Included
6	Patio	35'11" x 14'10"	494 sq. ft	No
7	Living Room	10'7" x 10'8"	113 sq. ft	Yes
8	Patio	18'9" x 5'10"	84 sq. ft	No
9	Dining Room	10'11" x 12'0"	131 sq. ft	Yes
10	Kitchen	9'10" x 12'3"	120 sq. ft	Yes
11	Breakfast Nook	10'1" x 14'8"	135 sq. ft	Yes
12	WC	5'1" x 5'1"	26 sq. ft	Yes
13	Garage	19'11" x 22'2"	438 sq. ft	No
14	Great Room	18'10" x 20'4"	278 sq. ft	Yes
15	Foyer	12'2" x 20'1"	171 sq. ft	Yes
16	Den	11'8" x 13'6"	148 sq. ft	Yes

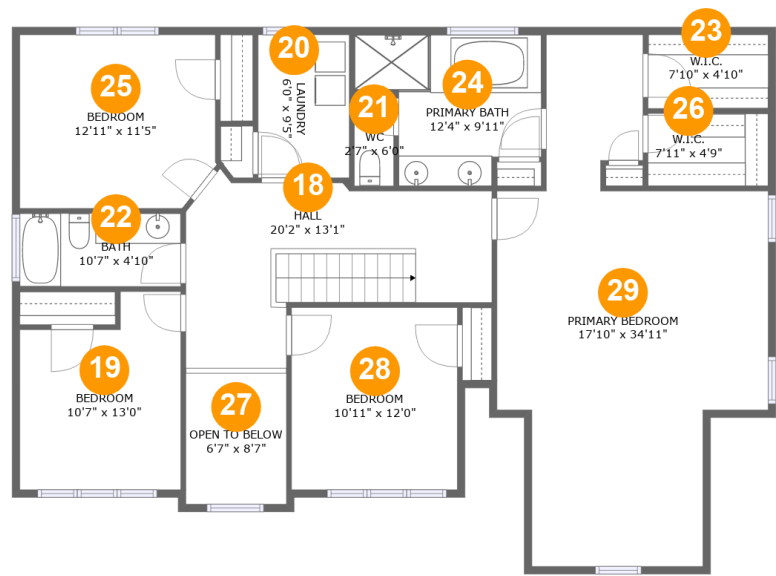
Home report

6378 Sandhurst Drive, Sugar Loaf Hills, Cave Spring, Roanoke,
Roanoke County, Virginia, United States, 24018

#		Max Dimensions	sqft	Included
17	Porch	9'1" x 6'0"	47 sq. ft	No

Home report

6378 Sandhurst Drive, Sugar Loaf Hills, Cave Spring, Roanoke,
Roanoke County, Virginia, United States, 24018



Room dimensions

Floor 3 Total:1426sqft Excluded: 58sqft

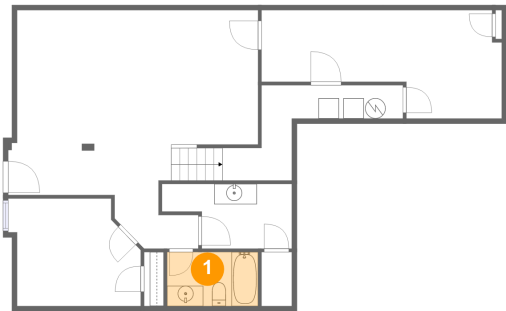
#		Max Dimensions	sqft	Included
18	Hall	20'2" x 13'1"	183 sq. ft	Yes
19	Bedroom	10'7" x 13'0"	121 sq. ft	Yes
20	Laundry	6'0" x 9'5"	56 sq. ft	Yes
21	WC	2'7" x 6'0"	15 sq. ft	Yes
22	Bath	10'7" x 4'10"	51 sq. ft	Yes
23	W.I.C.	7'10" x 4'10"	38 sq. ft	Yes
24	Primary Bath	12'4" x 9'11"	98 sq. ft	Yes
25	Bedroom	12'11" x 11'5"	144 sq. ft	Yes
26	W.I.C.	7'11" x 4'9"	38 sq. ft	Yes
27	Open To Below	6'7" x 8'7"	57 sq. ft	No
28	Bedroom	10'11" x 12'0"	131 sq. ft	Yes

Home report

6378 Sandhurst Drive, Sugar Loaf Hills, Cave Spring, Roanoke,
Roanoke County, Virginia, United States, 24018

#		Max Dimensions	sqft	Included
29	Primary Bedroom	17'10" x 34'11"	432 sq. ft	Yes

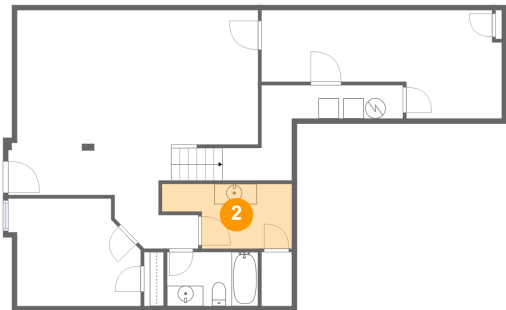
1 Floor 1 - Bath



Max Dimensions: 8'11" x 5'4"
Calculated Area: 47 sq. ft
Included: Yes

Heated: Yes
Finished: Yes
Enclosed: Yes
Contiguous: Yes
Permitted: Yes
Wet space: Yes
Addition: No
Conversion: No

2 Floor 1 - Wet Bar

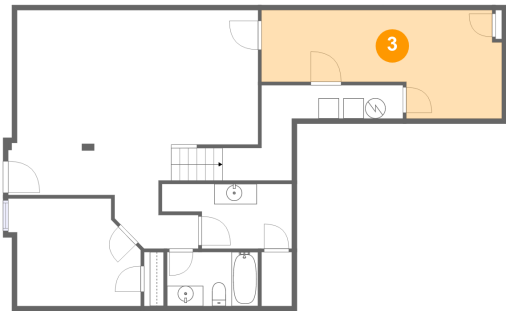


Max Dimensions: 12'9" x 6'4"
Calculated Area: 67 sq. ft
Included: Yes

Heated: Yes
Finished: Yes
Enclosed: Yes
Contiguous: Yes
Permitted: Yes
Wet space: No
Addition: No
Conversion: No

6378 Sandhurst Drive, Sugar Loaf Hills, Cave Spring, Roanoke,
Roanoke County, Virginia, United States, 24018

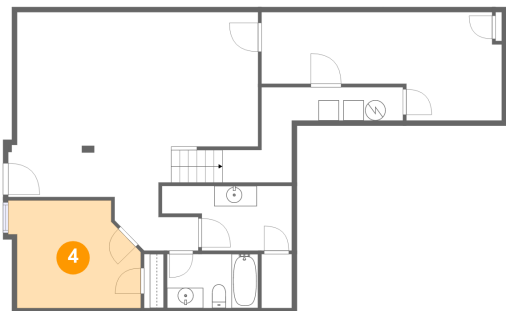
3 Floor 1 - Bedroom



Max Dimensions: 23'8" x 10'8"
Calculated Area: 197 sq. ft
Included: Yes

Heated: Yes
Finished: Yes
Enclosed: Yes
Contiguous: Yes
Permitted: Yes
Wet space: No
Addition: No
Conversion: No

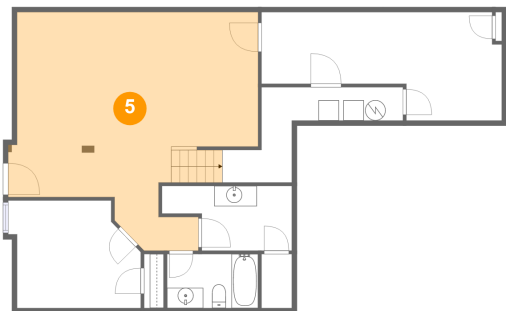
4 Floor 1 - Bedroom



Max Dimensions: 12'1" x 10'7"
Calculated Area: 121 sq. ft
Included: Yes

Heated: Yes
Finished: Yes
Enclosed: Yes
Contiguous: Yes
Permitted: Yes
Wet space: No
Addition: No
Conversion: No

5 Floor 1 - Recreation Room



Max Dimensions: 24'7" x 23'5"
Calculated Area: 439 sq. ft
Included: Yes

Heated: Yes
Finished: Yes
Enclosed: Yes
Contiguous: Yes
Permitted: Yes
Wet space: No
Addition: No
Conversion: No

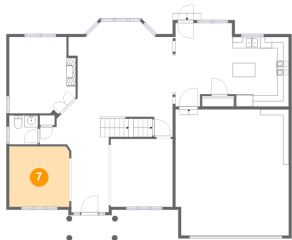
6 Floor 2 - Patio



Max Dimensions: 35'11" x 14'10"
Calculated Area: 494 sq. ft
Included: No

Heated: No
Finished: Yes
Enclosed: No
Contiguous: Yes
Permitted: Yes
Wet space: No
Addition: No
Conversion: No

7 Floor 2 - Living Room



Max Dimensions: 10'7" x 10'8"
Calculated Area: 113 sq. ft
Included: Yes

Heated: Yes
Finished: Yes
Enclosed: Yes
Contiguous: Yes
Permitted: Yes
Wet space: No
Addition: No
Conversion: No

8 Floor 2 - Patio

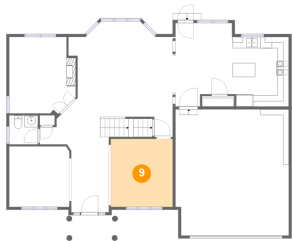


Max Dimensions: 18'9" x 5'10"
Calculated Area: 84 sq. ft
Included: No

Heated: No
Finished: Yes
Enclosed: No
Contiguous: Yes
Permitted: Yes
Wet space: No
Addition: No
Conversion: No

6378 Sandhurst Drive, Sugar Loaf Hills, Cave Spring, Roanoke,
Roanoke County, Virginia, United States, 24018

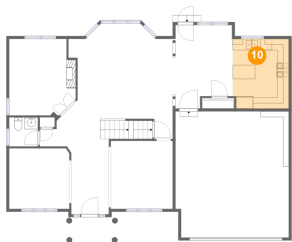
9 Floor 2 - Dining Room



Max Dimensions: 10'11" x 12'0"
Calculated Area: 131 sq. ft
Included: Yes

Heated: Yes
Finished: Yes
Enclosed: Yes
Contiguous: Yes
Permitted: Yes
Wet space: No
Addition: No
Conversion: No

10 Floor 2 - Kitchen



Max Dimensions: 9'10" x 12'3"
Calculated Area: 120 sq. ft
Included: Yes

Heated: Yes
Finished: Yes
Enclosed: Yes
Contiguous: Yes
Permitted: Yes
Wet space: No
Addition: No
Conversion: No

11 Floor 2 - Breakfast Nook

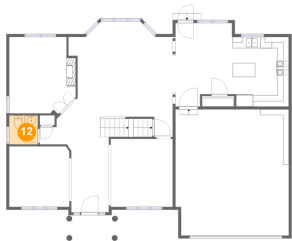


Max Dimensions: 10'1" x 14'8"
Calculated Area: 135 sq. ft
Included: Yes

Heated: Yes
Finished: Yes
Enclosed: Yes
Contiguous: Yes
Permitted: Yes
Wet space: No
Addition: No
Conversion: No

6378 Sandhurst Drive, Sugar Loaf Hills, Cave Spring, Roanoke,
Roanoke County, Virginia, United States, 24018

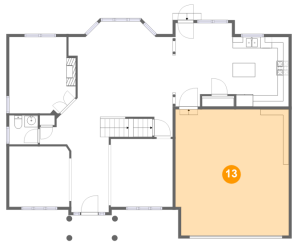
12 Floor 2 - WC



Max Dimensions: 5'1" x 5'1"
Calculated Area: 26 sq. ft
Included: Yes

Heated: Yes
Finished: Yes
Enclosed: Yes
Contiguous: Yes
Permitted: Yes
Wet space: Yes
Addition: No
Conversion: No

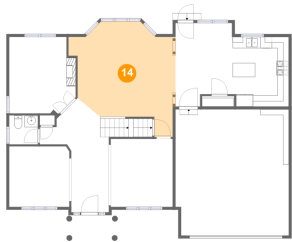
13 Floor 2 - Garage



Max Dimensions: 19'11" x 22'2"
Calculated Area: 438 sq. ft
Included: No

Heated: No
Finished: No
Enclosed: Yes
Contiguous: Yes
Permitted: Yes
Wet space: No
Addition: No
Conversion: No

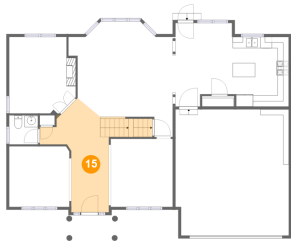
14 Floor 2 - Great Room



Max Dimensions: 18'10" x 20'4"
Calculated Area: 278 sq. ft
Included: Yes

Heated: Yes
Finished: Yes
Enclosed: Yes
Contiguous: Yes
Permitted: Yes
Wet space: No
Addition: No
Conversion: No

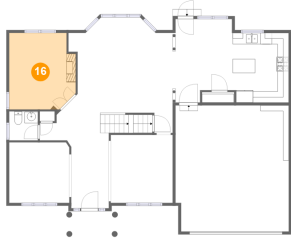
15 Floor 2 - Foyer



Max Dimensions: 12'2" x 20'1"
Calculated Area: 171 sq. ft
Included: Yes

Heated: Yes
Finished: Yes
Enclosed: Yes
Contiguous: Yes
Permitted: Yes
Wet space: No
Addition: No
Conversion: No

16 Floor 2 - Den



Max Dimensions: 11'8" x 13'6"
Calculated Area: 148 sq. ft
Included: Yes

Heated: Yes
Finished: Yes
Enclosed: Yes
Contiguous: Yes
Permitted: Yes
Wet space: No
Addition: No
Conversion: No

17 Floor 2 - Porch

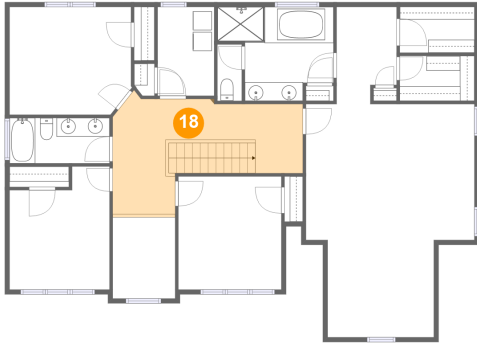


Max Dimensions: 9'1" x 6'0"
Calculated Area: 47 sq. ft
Included: No

Heated: No
Finished: Yes
Enclosed: No
Contiguous: Yes
Permitted: Yes
Wet space: No
Addition: No
Conversion: No

6378 Sandhurst Drive, Sugar Loaf Hills, Cave Spring, Roanoke,
Roanoke County, Virginia, United States, 24018

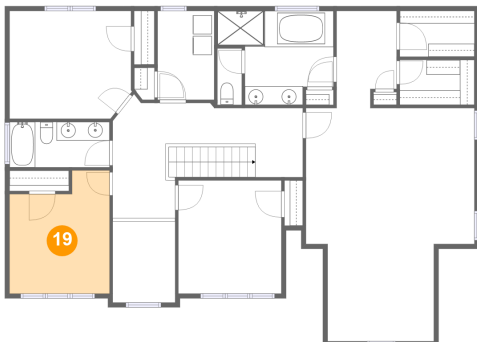
18 Floor 3 - Hall



Max Dimensions: 20'2" x 13'1"
Calculated Area: 183 sq. ft
Included: Yes

Heated: Yes
Finished: Yes
Enclosed: Yes
Contiguous: Yes
Permitted: Yes
Wet space: No
Addition: No
Conversion: No

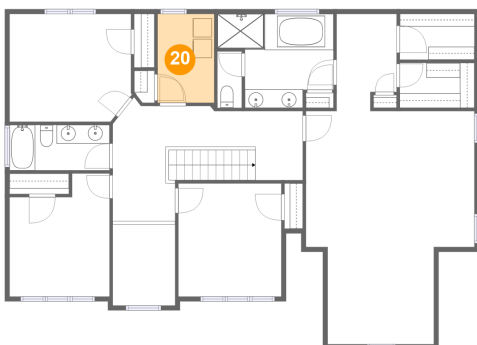
19 Floor 3 - Bedroom



Max Dimensions: 10'7" x 13'0"
Calculated Area: 121 sq. ft
Included: Yes

Heated: Yes
Finished: Yes
Enclosed: Yes
Contiguous: Yes
Permitted: Yes
Wet space: No
Addition: No
Conversion: No

20 Floor 3 - Laundry

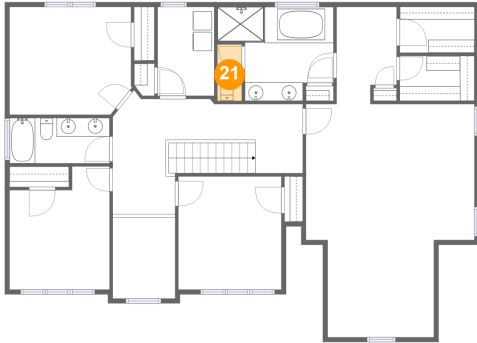


Max Dimensions: 6'0" x 9'5"
Calculated Area: 56 sq. ft
Included: Yes

Heated: Yes
Finished: Yes
Enclosed: Yes
Contiguous: Yes
Permitted: Yes
Wet space: No
Addition: No
Conversion: No

6378 Sandhurst Drive, Sugar Loaf Hills, Cave Spring, Roanoke,
Roanoke County, Virginia, United States, 24018

21 Floor 3 - WC



Max Dimensions: 2'7" x 6'0"
Calculated Area: 15 sq. ft
Included: Yes

Heated: Yes
Finished: Yes
Enclosed: Yes
Contiguous: Yes
Permitted: Yes
Wet space: Yes
Addition: No
Conversion: No

22 Floor 3 - Bath



Max Dimensions: 10'7" x 4'10"
Calculated Area: 51 sq. ft
Included: Yes

Heated: Yes
Finished: Yes
Enclosed: Yes
Contiguous: Yes
Permitted: Yes
Wet space: Yes
Addition: No
Conversion: No

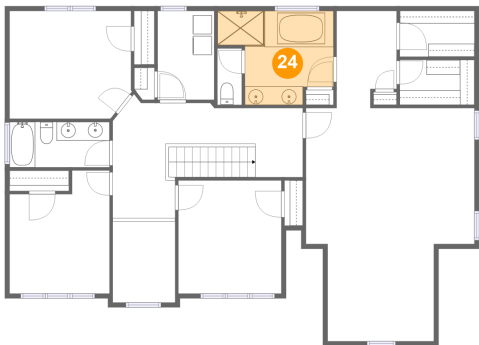
23 Floor 3 - W.I.C.



Max Dimensions: 7'10" x 4'10"
Calculated Area: 38 sq. ft
Included: Yes

Heated: Yes
Finished: Yes
Enclosed: Yes
Contiguous: Yes
Permitted: Yes
Wet space: No
Addition: No
Conversion: No

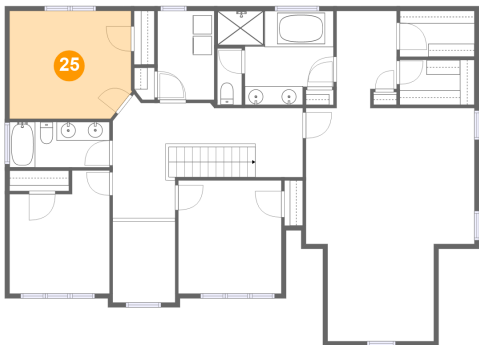
24 Floor 3 - Primary Bath



Max Dimensions: 12'4" x 9'11"
Calculated Area: 98 sq. ft
Included: Yes

Heated: Yes
Finished: Yes
Enclosed: Yes
Contiguous: Yes
Permitted: Yes
Wet space: Yes
Addition: No
Conversion: No

25 Floor 3 - Bedroom



Max Dimensions: 12'11" x 11'5"
Calculated Area: 144 sq. ft
Included: Yes

Heated: Yes
Finished: Yes
Enclosed: Yes
Contiguous: Yes
Permitted: Yes
Wet space: No
Addition: No
Conversion: No

26 Floor 3 - W.I.C.

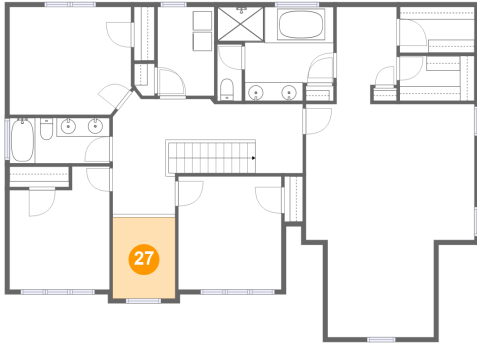


Max Dimensions: 7'11" x 4'9"
Calculated Area: 38 sq. ft
Included: Yes

Heated: Yes
Finished: Yes
Enclosed: Yes
Contiguous: Yes
Permitted: Yes
Wet space: No
Addition: No
Conversion: No

6378 Sandhurst Drive, Sugar Loaf Hills, Cave Spring, Roanoke,
Roanoke County, Virginia, United States, 24018

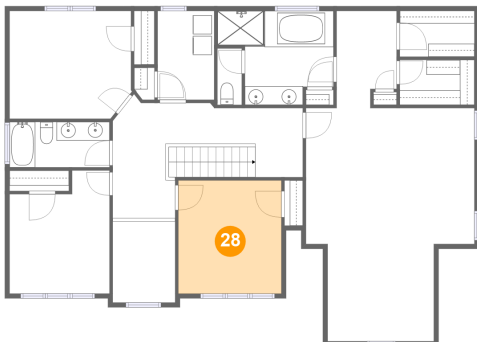
27 Floor 3 - Open To Below



Max Dimensions: 6'7" x 8'7"
Calculated Area: 57 sq. ft
Included: No

Heated: No
Finished: No
Enclosed: No
Contiguous: Yes
Permitted: No
Wet space: No
Addition: No
Conversion: No

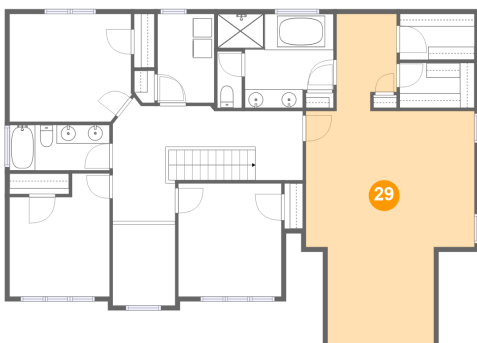
28 Floor 3 - Bedroom



Max Dimensions: 10'11" x 12'0"
Calculated Area: 131 sq. ft
Included: Yes

Heated: Yes
Finished: Yes
Enclosed: Yes
Contiguous: Yes
Permitted: Yes
Wet space: No
Addition: No
Conversion: No

29 Floor 3 - Primary Bedroom



Max Dimensions: 17'10" x 34'11"
Calculated Area: 432 sq. ft
Included: Yes

Heated: Yes
Finished: Yes
Enclosed: Yes
Contiguous: Yes
Permitted: Yes
Wet space: No
Addition: No
Conversion: No