

3983 St Thomas St

Port Coquitlam BC V3B 2Z3

Main Level Area: 1,030 SQ.FT.
 Upper Level Area: 1,655 SQ.FT.
Total Area 2,685 SQ.FT.

Workshop Area: 1,710 SQ.FT.

4



BEDROOMS

5

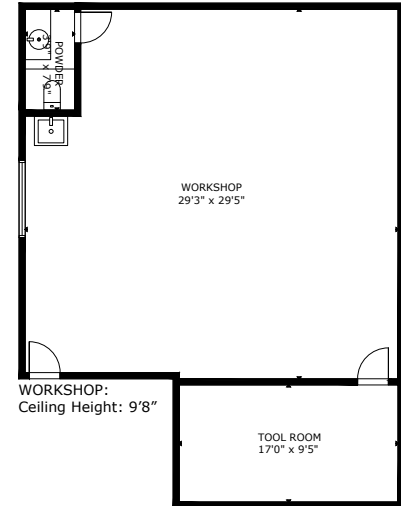
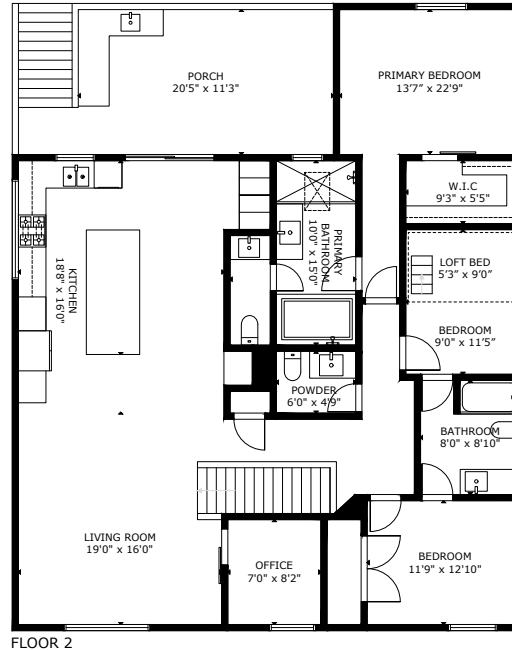
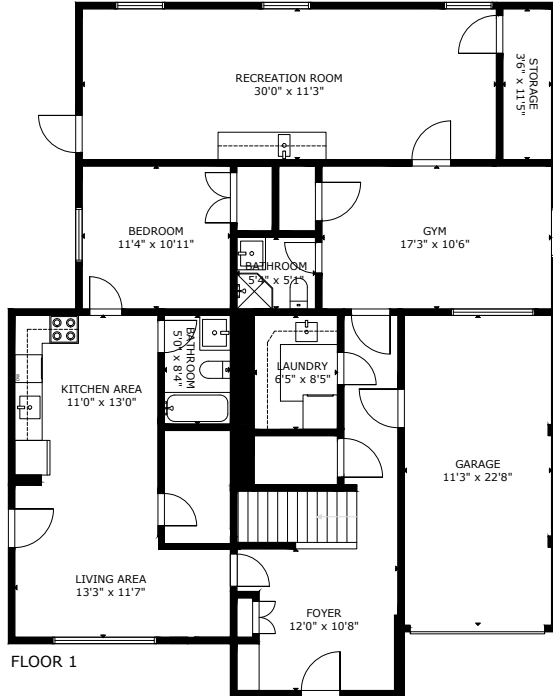


BATHROOMS

2,685



TOTAL SQ.FT.



Christine TOSSA
 REALTOR®
 Personal Real Estate Corporation



604.837.8686 | email: christinetossa@gmail.com



3D IMMERSIVE
 Tours Photos Floor Plans
 Professionally measured by: 3D Immersive Marketing Ltd.
 Lead Floor Planner: *Sara Alexander*
 Quality Assurance: *Danica Graham*

Measurements are approximate and may not be to scale.
 The floor plan illustration is not suitable for construction/architectural purposes.