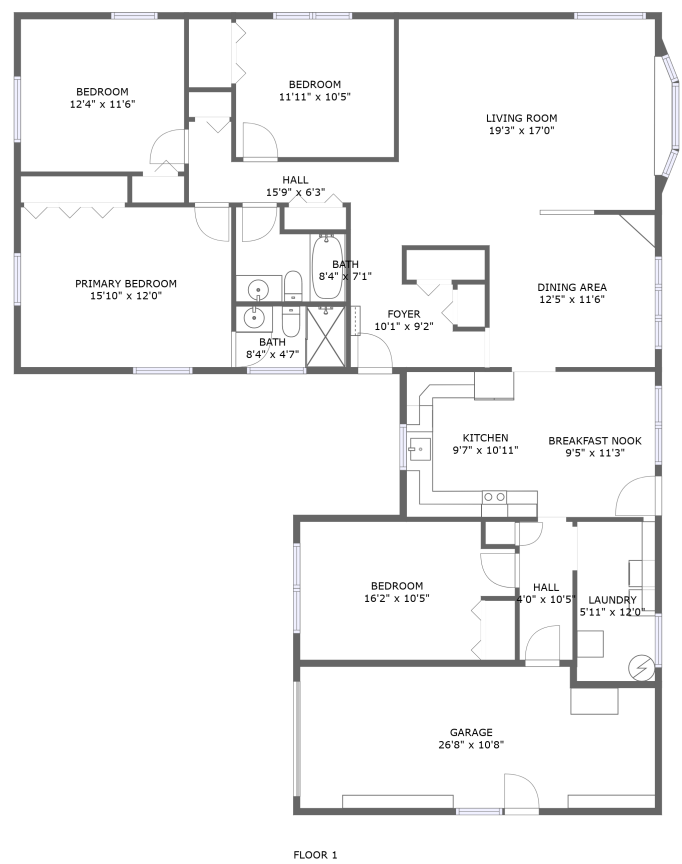


Home report

17305 Fletchall Road, Westerly, Poolesville, Montgomery
County, Maryland, United States, 20837




Total Area: 1753 sq. ft

Floor 1: 1753 sq. ft

Excluded: Garage 274 sq. ft, Embedded window 11 sq. ft, Walls: 130 sq. ft

Property summary

 **1** Floors

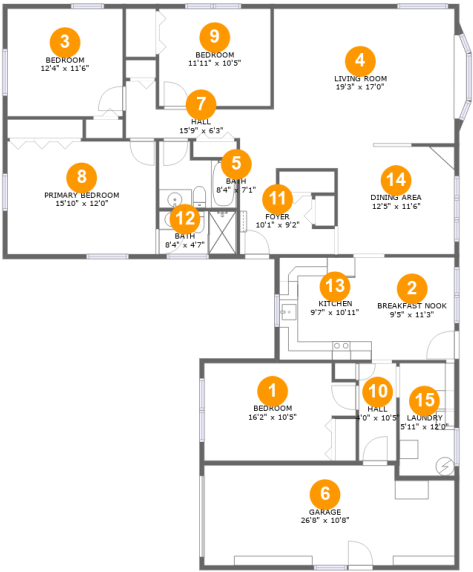
 **4** Bedrooms

 **2** Bathrooms

 **1** Garages

Home report

17305 Fletchall Road, Westerly, Poolesville, Montgomery County, Maryland, United States, 20837



Room dimensions

Floor 1 Total:1753sqft Excluded: 285sqft

#		Max Dimensions	sqft	Included
1	Bedroom	16'2" x 10'5"	151 sq. ft	Yes
2	Breakfast Nook	9'5" x 11'3"	100 sq. ft	Yes
3	Bedroom	12'4" x 11'6"	141 sq. ft	Yes
4	Living Room	19'3" x 17'0"	298 sq. ft	Yes
5	Bath	8'4" x 7'1"	49 sq. ft	Yes
6	Garage	26'8" x 10'8"	274 sq. ft	No
7	Hall	15'9" x 6'3"	70 sq. ft	Yes
8	Primary Bedroom	15'10" x 12'0"	191 sq. ft	Yes
9	Bedroom	11'11" x 10'5"	124 sq. ft	Yes
10	Hall	4'0" x 10'5"	42 sq. ft	Yes
11	Foyer	10'1" x 9'2"	66 sq. ft	Yes

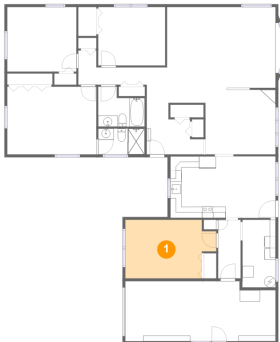
Home report

17305 Fletchall Road, Westerly, Poolesville, Montgomery
County, Maryland, United States, 20837

#		Max Dimensions	sqft	Included
12	Bath	8'4" x 4'7"	38 sq. ft	Yes
13	Kitchen	9'7" x 10'11"	105 sq. ft	Yes
14	Dining Area	12'5" x 11'6"	143 sq. ft	Yes
15	Laundry	5'11" x 12'0"	70 sq. ft	Yes

17305 Fletchall Road, Westerly, Poolesville, Montgomery
County, Maryland, United States, 20837

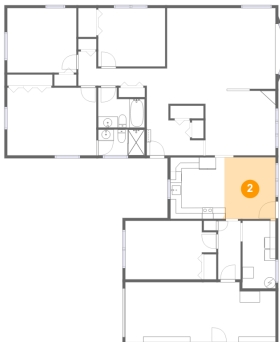
1 Floor 1 - Bedroom



Max Dimensions: 16'2" x 10'5"
Calculated Area: 151 sq. ft
Included: No

Heated: Yes
Finished: Yes
Enclosed: Yes
Contiguous: Yes
Permitted: Yes
Wet space: No
Addition: No
Conversion: No

2 Floor 1 - Breakfast Nook

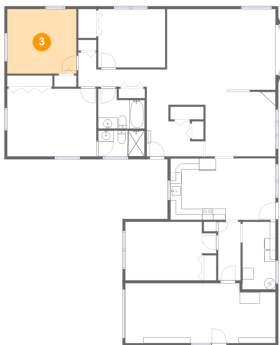


Max Dimensions: 9'5" x 11'3"
Calculated Area: 100 sq. ft
Included: Yes

Heated: Yes
Finished: Yes
Enclosed: Yes
Contiguous: Yes
Permitted: Yes
Wet space: No
Addition: No
Conversion: No

17305 Fletchall Road, Westerly, Poolesville, Montgomery
County, Maryland, United States, 20837

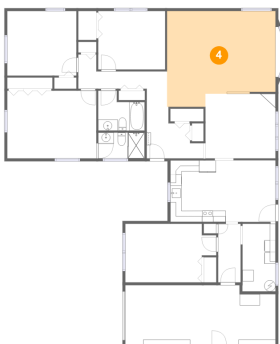
3 Floor 1 - Bedroom



Max Dimensions: 12'4" x 11'6"
Calculated Area: 141 sq. ft
Included: Yes

Heated: Yes
Finished: Yes
Enclosed: Yes
Contiguous: Yes
Permitted: Yes
Wet space: No
Addition: No
Conversion: No

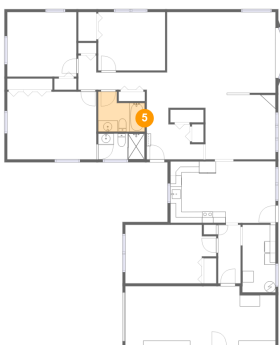
4 Floor 1 - Living Room



Max Dimensions: 19'3" x 17'0"
Calculated Area: 298 sq. ft
Included: Yes

Heated: Yes
Finished: Yes
Enclosed: Yes
Contiguous: Yes
Permitted: Yes
Wet space: No
Addition: No
Conversion: No

5 Floor 1 - Bath



Max Dimensions: 8'4" x 7'1"
Calculated Area: 49 sq. ft
Included: Yes

Heated: Yes
Finished: Yes
Enclosed: Yes
Contiguous: Yes
Permitted: Yes
Wet space: Yes
Addition: No
Conversion: No

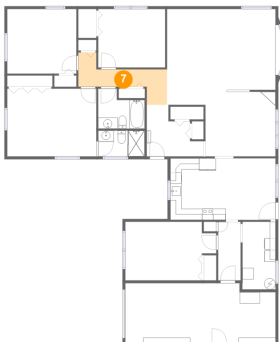
6 Floor 1 - Garage



Max Dimensions: 26'8" x 10'8"
Calculated Area: 274 sq. ft
Included: No

Heated: No
Finished: No
Enclosed: Yes
Contiguous: Yes
Permitted: Yes
Wet space: No
Addition: No
Conversion: No

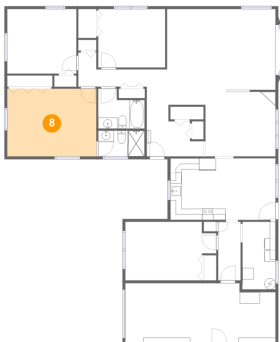
7 Floor 1 - Hall



Max Dimensions: 15'9" x 6'3"
Calculated Area: 70 sq. ft
Included: Yes

Heated: Yes
Finished: Yes
Enclosed: Yes
Contiguous: Yes
Permitted: Yes
Wet space: No
Addition: No
Conversion: No

8 Floor 1 - Primary Bedroom

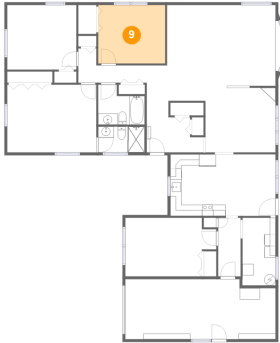


Max Dimensions: 15'10" x 12'0"
Calculated Area: 191 sq. ft
Included: Yes

Heated: Yes
Finished: Yes
Enclosed: Yes
Contiguous: Yes
Permitted: Yes
Wet space: No
Addition: No
Conversion: No

17305 Fletchall Road, Westerly, Poolesville, Montgomery
County, Maryland, United States, 20837

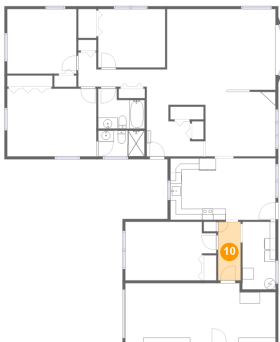
9 Floor 1 - Bedroom



Max Dimensions: 11'11" x 10'5"
Calculated Area: 124 sq. ft
Included: Yes

Heated: Yes
Finished: Yes
Enclosed: Yes
Contiguous: Yes
Permitted: Yes
Wet space: No
Addition: No
Conversion: No

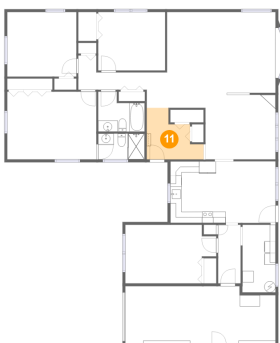
10 Floor 1 - Hall



Max Dimensions: 4'0" x 10'5"
Calculated Area: 42 sq. ft
Included: Yes

Heated: Yes
Finished: Yes
Enclosed: Yes
Contiguous: Yes
Permitted: Yes
Wet space: No
Addition: No
Conversion: No

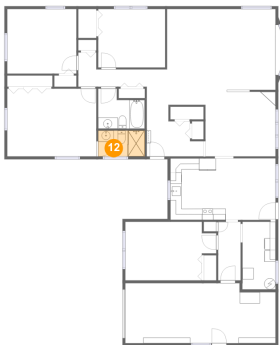
11 Floor 1 - Foyer



Max Dimensions: 10'1" x 9'2"
Calculated Area: 66 sq. ft
Included: Yes

Heated: Yes
Finished: Yes
Enclosed: Yes
Contiguous: Yes
Permitted: Yes
Wet space: No
Addition: No
Conversion: No

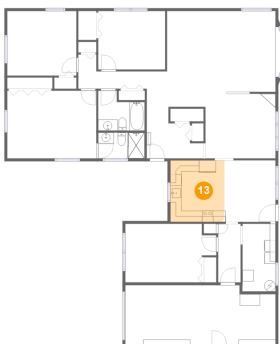
12 Floor 1 - Bath



Max Dimensions: 8'4" x 4'7"
Calculated Area: 38 sq. ft
Included: Yes

Heated: Yes
Finished: Yes
Enclosed: Yes
Contiguous: Yes
Permitted: Yes
Wet space: Yes
Addition: No
Conversion: No

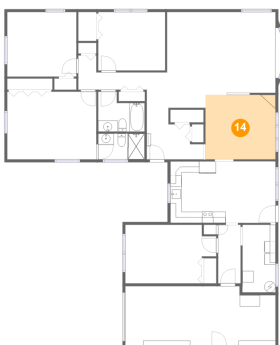
13 Floor 1 - Kitchen



Max Dimensions: 9'7" x 10'11"
Calculated Area: 105 sq. ft
Included: Yes

Heated: Yes
Finished: Yes
Enclosed: Yes
Contiguous: Yes
Permitted: Yes
Wet space: No
Addition: No
Conversion: No

14 Floor 1 - Dining Area

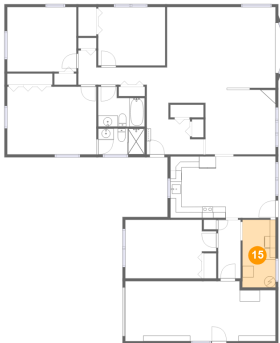


Max Dimensions: 12'5" x 11'6"
Calculated Area: 143 sq. ft
Included: Yes

Heated: Yes
Finished: Yes
Enclosed: Yes
Contiguous: Yes
Permitted: Yes
Wet space: No
Addition: No
Conversion: No

17305 Fletchall Road, Westerly, Poolesville, Montgomery
County, Maryland, United States, 20837

15 Floor 1 - Laundry



Max Dimensions: 5'11" x 12'0"
Calculated Area: 70 sq. ft
Included: Yes

Heated: Yes
Finished: Yes
Enclosed: Yes
Contiguous: Yes
Permitted: Yes
Wet space: No
Addition: No
Conversion: No