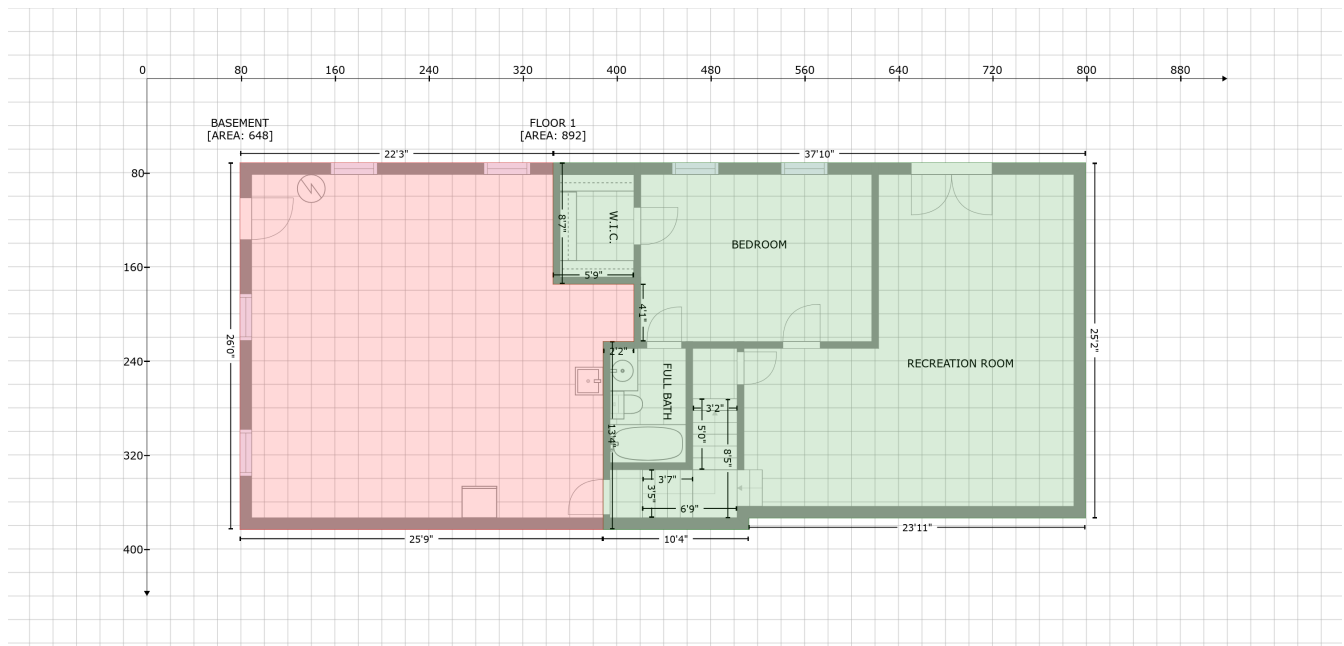


# 2893 Spring House Rd, Christiansburg, VA, United States

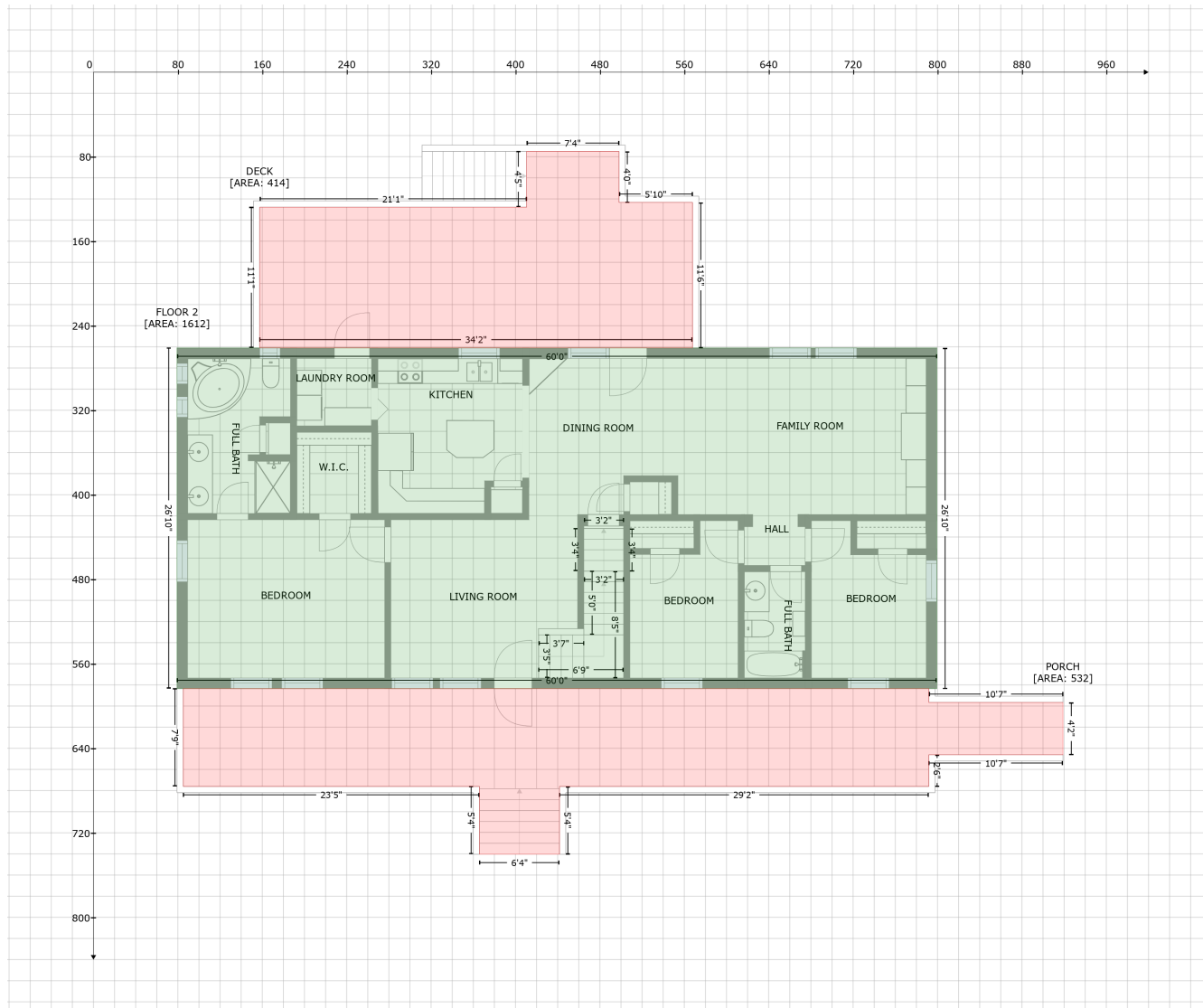
Gross Living Area: 3290 sq. ft



Space	Area (sq. ft)	Calculation <small>Coordinate Polygon Area Algorithm using inches</small>
FLOOR 1 (Living area)	892	$-\left((799.3 + 799.3) * (71.5 - 373.7) + (799.3 + 512.6) * (373.7 - 373.7) + (512.6 + 512.6) * (373.7 - 383.4) + (512.6 + 388.4) * (383.4 - 383.4) + (388.4 + 388.4) * (383.4 - 223.6) + (388.4 + 414.6) * (223.6 - 223.6) + (414.6 + 414.6) * (223.6 - 174.8) + (414.6 + 345.8) * (174.8 - 174.8) + (345.8 + 345.8) * (174.8 - 71.5) + (345.8 + 799.3) * (71.5 - 71.5)\right) * 0.5 * 0.00694$
BASEMENT (Non-living area)	648	$-\left((345.8 + 345.8) * (71.5 - 174.8) + (345.8 + 414.6) * (174.8 - 174.8) + (414.6 + 414.6) * (174.8 - 223.6) + (414.6 + 388.4) * (223.6 - 223.6) + (388.4 + 388.4) * (223.6 - 383.4) + (388.4 + 79.2) * (383.4 - 383.4) + (79.2 + 79.2) * (383.4 - 71.5) + (79.2 + 345.8) * (71.5 - 71.5)\right) * 0.5 * 0.00694$

# 2893 Spring House Rd, Christiansburg, VA, United States

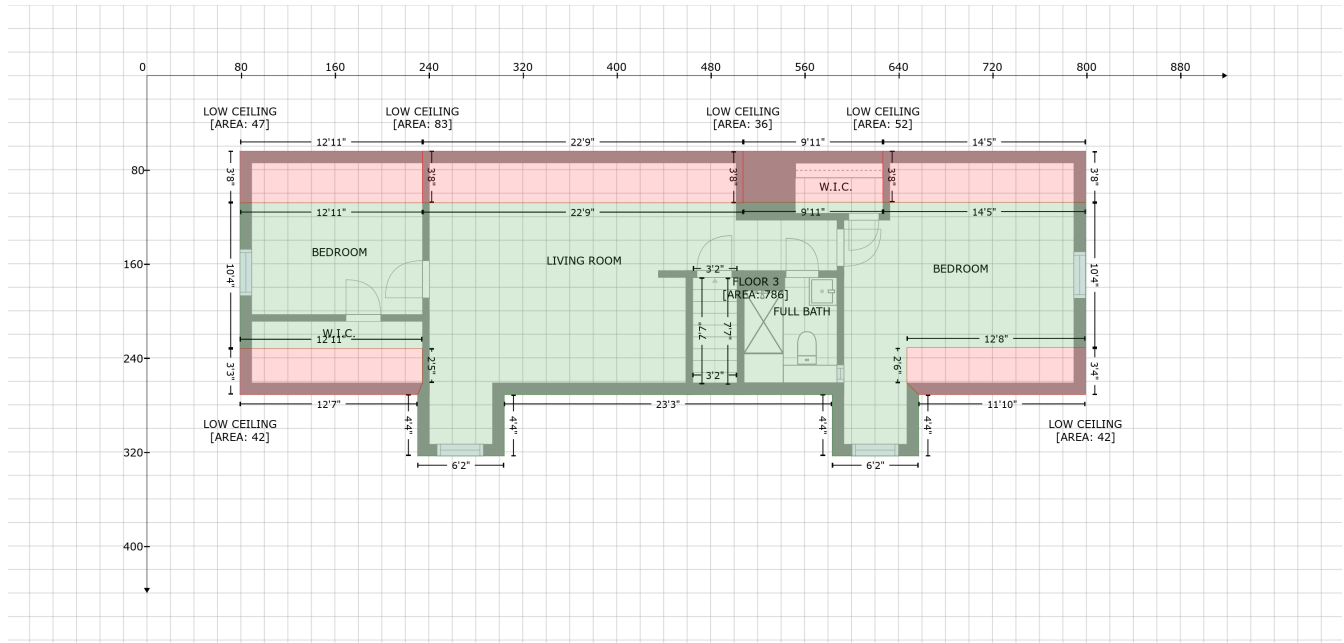
Gross Living Area: 3290 sq. ft



Space	Area (sq. ft)	Calculation
FLOOR 2 (Living area)	1612	$-\left((799.3 + 799.3) * (261 - 583.4) + (799.3 + 79.2) * (583.4 - 583.4) + (79.2 + 79.2) * (583.4 - 261) + (79.2 + 799.3) * (261 - 261)\right) * 0.5 * 0.00694$
DECK (Non-living area)	414	$-\left((498.1 + 498.1) * (75 - 123.3) + (498.1 + 567.8) * (123.3 - 123.3) + (567.8 + 567.8) * (123.3 - 261) + (567.8 + 157.6) * (261 - 261) + (157.6 + 157.6) * (261 - 127.8) + (157.6 + 410.6) * (127.8 - 127.8) + (410.6 + 410.6) * (127.8 - 75) + (410.6 + 498.1) * (75 - 75)\right) * 0.5 * 0.00694$
PORCH (Non-living area)	532	$-\left((791.8 + 791.8) * (583.4 - 596.6) + (791.8 + 918.9) * (596.6 - 596.6) + (918.9 + 918.9) * (596.6 - 646.1) + (918.9 + 791.8) * (646.1 - 646.1) + (791.8 + 791.8) * (646.1 - 676.1) + (791.8 + 441.7) * (676.1 - 676.1) + (441.7 + 441.7) * (676.1 - 740.3) + (441.7 + 365.9) * (740.3 - 740.3) + (365.9 + 365.9) * (740.3 - 676.1) + (365.9 + 85.1) * (676.1 - 676.1) + (85.1 + 85.1) * (676.1 - 583.4) + (85.1 + 791.8) * (583.4 - 583.4)\right) * 0.5 * 0.00694$

# 2893 Spring House Rd, Christiansburg, VA, United States

Gross Living Area: 3290 sq. ft



Space	Area (sq. ft)	Calculation
FLOOR 3 (Living area)	786	$-\left((626.7 + 626.7) * (107.7 - 107.8) + (626.7 + 799.3) * (107.8 - 107.8) + (799.3 + 799.3) * (107.8 - 231.4) + (799.3 + 647.2) * (231.4 - 231.4) + (647.2 + 647.2) * (231.4 - 261.3) + (647.2 + 657.2) * (261.3 - 271.3) + (657.2 + 657.2) * (271.3 - 323.4) + (657.2 + 583.5) * (323.4 - 323.4) + (583.5 + 583.5) * (323.4 - 271.3) + (583.5 + 304.3) * (271.3 - 271.3) + (304.3 + 304.3) * (271.3 - 323.4) + (304.3 + 230.5) * (323.4 - 323.4) + (230.5 + 230.5) * (323.4 - 271.3) + (230.5 + 234.6) * (271.3 - 261.3) + (234.6 + 234.6) * (261.3 - 232.1) + (234.6 + 79.2) * (232.1 - 232.1) + (79.2 + 79.2) * (232.1 - 108.2) + (79.2 + 234.6) * (108.2 - 108.2) + (234.6 + 234.6) * (108.2 - 108.2) + (234.6 + 507.6) * (108.2 - 108.2) + (507.6 + 507.6) * (108.2 - 107.7) + (507.6 + 626.7) * (107.7 - 107.7)) * 0.5 * 0.00694$
LOW CEILING (Non-living area)	42	$-\left((799.3 + 799.3) * (231.4 - 271.3) + (799.3 + 657.2) * (271.3 - 271.3) + (657.2 + 647.2) * (271.3 - 261.3) + (647.2 + 647.2) * (261.3 - 231.4) + (647.2 + 799.3) * (231.4 - 231.4)) * 0.5 * 0.00694$
LOW CEILING (Non-living area)	42	$-\left((234.6 + 234.6) * (232.1 - 261.3) + (234.6 + 230.5) * (261.3 - 271.3) + (230.5 + 79.2) * (271.3 - 271.3) + (79.2 + 79.2) * (271.3 - 232.1) + (79.2 + 234.6) * (232.1 - 232.1)) * 0.5 * 0.00694$
LOW CEILING (Non-living area)	83	$-\left((507.6 + 507.6) * (64.3 - 108.2) + (507.6 + 234.6) * (108.2 - 108.2) + (234.6 + 234.6) * (108.2 - 64.3) + (234.6 + 507.6) * (64.3 - 64.3)) * 0.5 * 0.00694$
LOW CEILING (Non-living area)	47	$-\left((234.6 + 234.6) * (64.3 - 108.2) + (234.6 + 79.2) * (108.2 - 108.2) + (79.2 + 79.2) * (108.2 - 64.3) + (79.2 + 234.6) * (64.3 - 64.3)) * 0.5 * 0.00694$
LOW CEILING (Non-living area)	52	$-\left((799.3 + 799.3) * (64.3 - 107.8) + (799.3 + 626.7) * (107.8 - 107.8) + (626.7 + 626.7) * (107.8 - 64.3) + (626.7 + 799.3) * (64.3 - 64.3)) * 0.5 * 0.00694$
LOW CEILING (Non-living area)	36	$-\left((626.7 + 626.7) * (64.3 - 107.7) + (626.7 + 507.6) * (107.7 - 107.7) + (507.6 + 507.6) * (107.7 - 64.3) + (507.6 + 626.7) * (64.3 - 64.3)) * 0.5 * 0.00694$