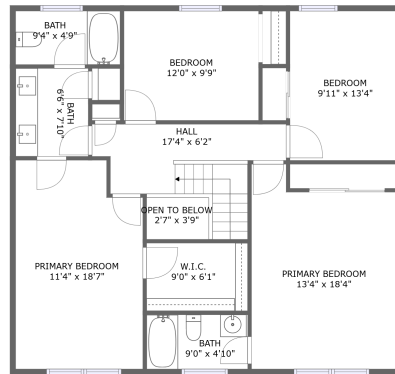
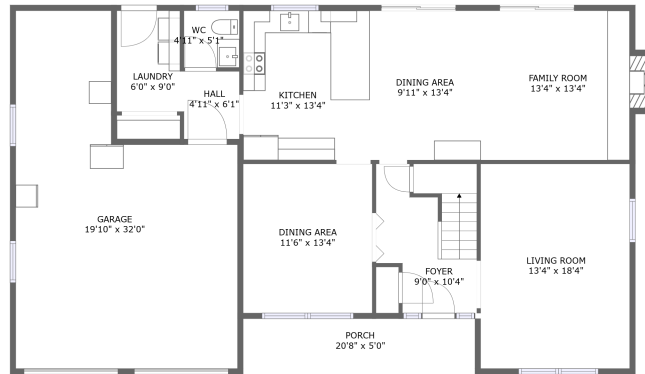


25 Charmwood Drive, Blue Ridge, Botetourt County, Virginia, United States, 24064




FLOOR 2



FLOOR 1

Property summary


 **1** Garages

 **4** Bedrooms

 **2** Bathrooms

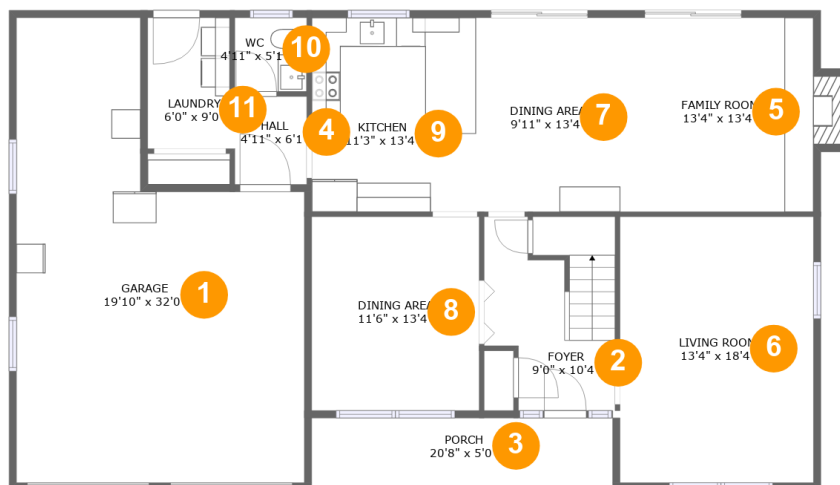
 **1** Half baths

 **2** Floors

 **2,355** Gross living area sqft

 **3,022** Total sqft

25 Charmwood Drive, Blue Ridge, Botetourt County, Virginia, United States, 24064



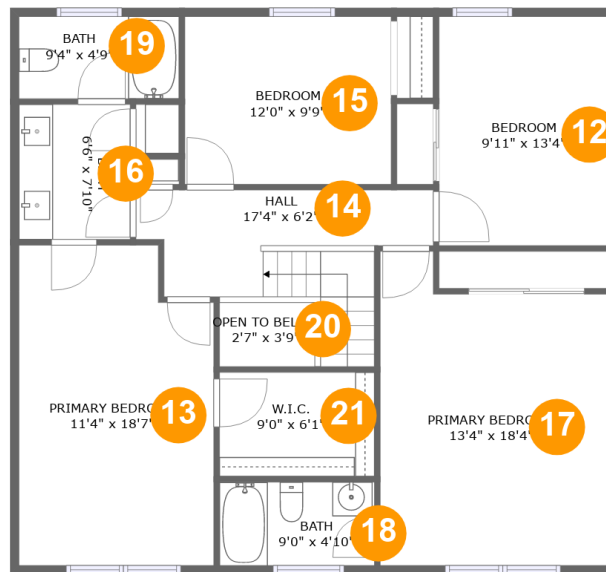
Room dimensions

Floor 1

Total sqft: 1854 Living area: 1208

#		Dimensions	sqft	Counted as living area
1	Garage	19'10" x 32'0"	499 sq. ft	No
2	Entry	9'0" x 10'4"	107 sq. ft	Yes
3	Outdoor	20'8" x 5'0"	103 sq. ft	No
4	Hall	4'11" x 6'1"	30 sq. ft	Yes
5	Living Room	13'4" x 13'4"	187 sq. ft	Yes
6	Living Room	13'4" x 18'4"	244 sq. ft	Yes
7	Dining Room	9'11" x 13'4"	133 sq. ft	Yes
8	Dining Room	11'6" x 13'4"	154 sq. ft	Yes
9	Kitchen	11'3" x 13'4"	151 sq. ft	Yes
10	Bath	4'11" x 5'1"	25 sq. ft	Yes
11	Utility	6'0" x 9'0"	52 sq. ft	Yes

25 Charmwood Drive, Blue Ridge, Botetourt County, Virginia, United States, 24064



Room dimensions

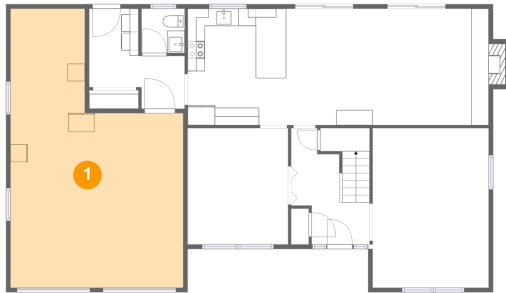
Floor 2

Total sqft: 1168 Living area: 1147

#		Dimensions	sqft	Counted as living area
12	Bedroom	9'11" x 13'4"	132 sq. ft	Yes
13	Bedroom	11'4" x 18'7"	201 sq. ft	Yes
14	Hall	17'4" x 6'2"	108 sq. ft	Yes
15	Bedroom	12'0" x 9'9"	118 sq. ft	Yes
16	Bath	6'6" x 7'10"	51 sq. ft	Yes
17	Bedroom	13'4" x 18'4"	218 sq. ft	Yes
18	Bath	9'0" x 4'10"	44 sq. ft	Yes
19	Bath	9'4" x 4'9"	45 sq. ft	Yes
20	Open To Below	2'7" x 3'9"	21 sq. ft	No
21	Cl	9'0" x 6'1"	55 sq. ft	Yes

25 Charmwood Drive, Blue Ridge, Botetourt County, Virginia, United States, 24064

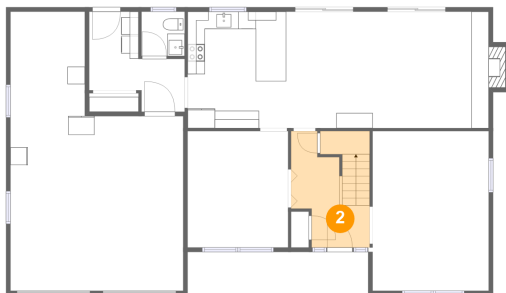
1 Floor 1 - Garage



Dimensions: 19'10" x 32'0"
Area: 499 sq. ft
Counted as living area: No

Heated: No
Finished: No
Enclosed: Yes
Contiguous: Yes
Permitted: Yes
Wet space: No
Addition: No
Conversion: No

2 Floor 1 - Entry

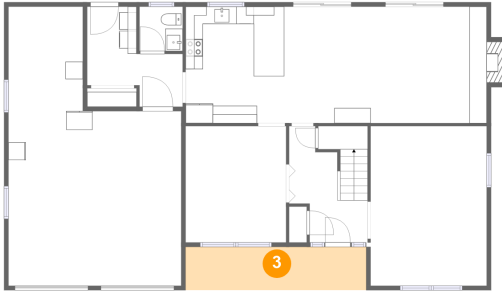


Dimensions: 9'0" x 10'4"
Area: 107 sq. ft
Counted as living area: Yes

Heated: Yes
Finished: Yes
Enclosed: Yes
Contiguous: Yes
Permitted: Yes
Wet space: No
Addition: No
Conversion: No

25 Charmwood Drive, Blue Ridge, Botetourt County, Virginia, United States, 24064

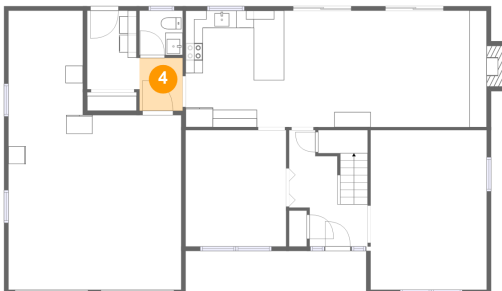
3 Floor 1 - Outdoor



Dimensions: 20'8" x 5'0"
Area: 103 sq. ft
Counted as living area: No

Heated: No
Finished: Yes
Enclosed: No
Contiguous: Yes
Permitted: Yes
Wet space: No
Addition: No
Conversion: No

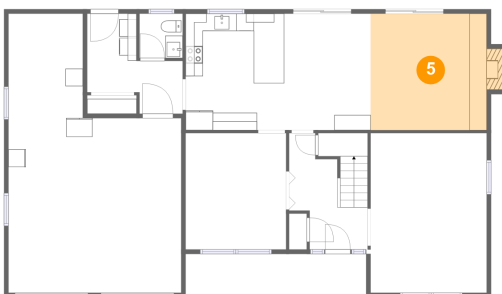
4 Floor 1 - Hall



Dimensions: 4'11" x 6'1"
Area: 30 sq. ft
Counted as living area: Yes

Heated: Yes
Finished: Yes
Enclosed: Yes
Contiguous: Yes
Permitted: Yes
Wet space: No
Addition: No
Conversion: No

5 Floor 1 - Living Room

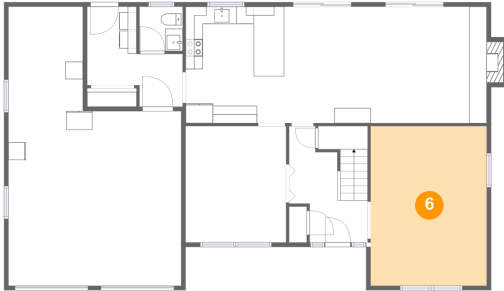


Dimensions: 13'4" x 13'4"
Area: 187 sq. ft
Counted as living area: Yes

Heated: Yes
Finished: Yes
Enclosed: Yes
Contiguous: Yes
Permitted: Yes
Wet space: No
Addition: No
Conversion: No

25 Charmwood Drive, Blue Ridge, Botetourt County, Virginia, United States, 24064

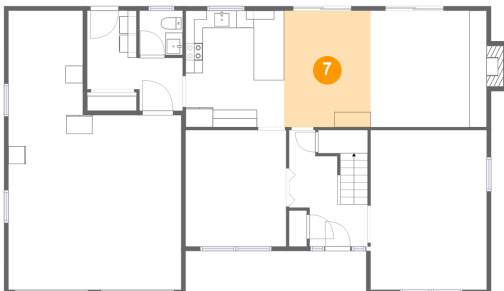
6 Floor 1 - Living Room



Dimensions: 13'4" x 18'4"
Area: 244 sq. ft
Counted as living area: Yes

Heated: Yes
Finished: Yes
Enclosed: Yes
Contiguous: Yes
Permitted: Yes
Wet space: No
Addition: No
Conversion: No

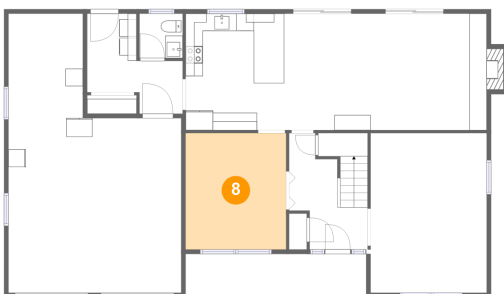
7 Floor 1 - Dining Room



Dimensions: 9'11" x 13'4"
Area: 133 sq. ft
Counted as living area: Yes

Heated: Yes
Finished: Yes
Enclosed: Yes
Contiguous: Yes
Permitted: Yes
Wet space: No
Addition: No
Conversion: No

8 Floor 1 - Dining Room

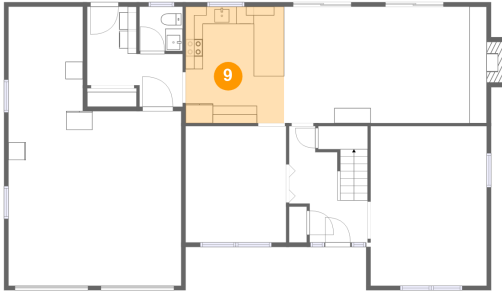


Dimensions: 11'6" x 13'4"
Area: 154 sq. ft
Counted as living area: Yes

Heated: Yes
Finished: Yes
Enclosed: Yes
Contiguous: Yes
Permitted: Yes
Wet space: No
Addition: No
Conversion: No

25 Charmwood Drive, Blue Ridge, Botetourt County, Virginia, United States, 24064

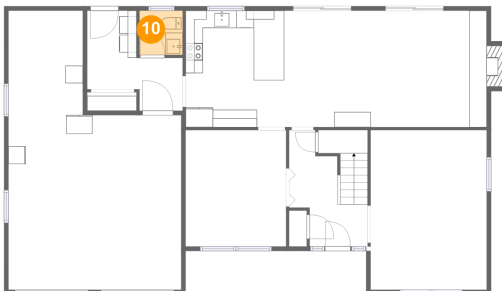
9 Floor 1 - Kitchen



Dimensions: 11'3" x 13'4"
Area: 151 sq. ft
Counted as living area: Yes

Heated: Yes
Finished: Yes
Enclosed: Yes
Contiguous: Yes
Permitted: Yes
Wet space: No
Addition: No
Conversion: No

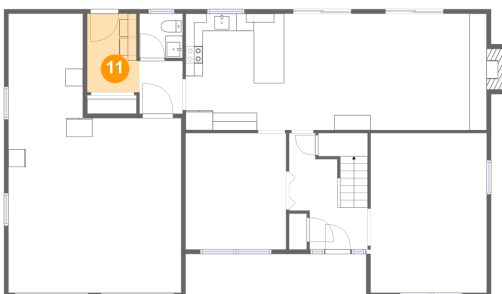
10 Floor 1 - Bath



Dimensions: 4'11" x 5'1"
Area: 25 sq. ft
Counted as living area: Yes

Heated: Yes
Finished: Yes
Enclosed: Yes
Contiguous: Yes
Permitted: Yes
Wet space: Yes
Addition: No
Conversion: No

11 Floor 1 - Utility

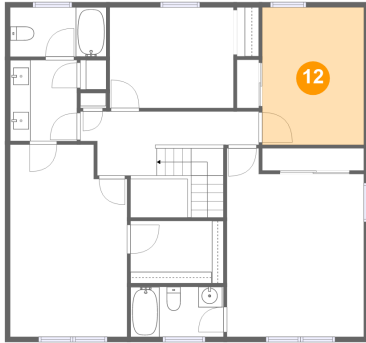


Dimensions: 6'0" x 9'0"
Area: 52 sq. ft
Counted as living area: Yes

Heated: Yes
Finished: Yes
Enclosed: Yes
Contiguous: Yes
Permitted: Yes
Wet space: No
Addition: No
Conversion: No

**25 Charmwood Drive, Blue Ridge, Botetourt County,
Virginia, United States, 24064**

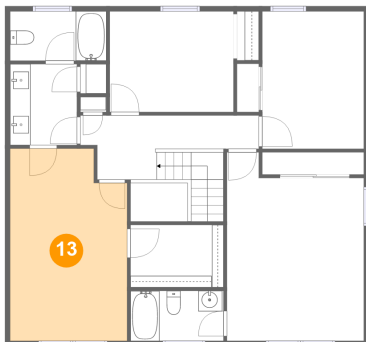
12 Floor 2 - Bedroom



Dimensions: 9'11" x 13'4"
Area: 132 sq. ft
Counted as living area: Yes

Heated: Yes
Finished: Yes
Enclosed: Yes
Contiguous: Yes
Permitted: Yes
Wet space: No
Addition: No
Conversion: No

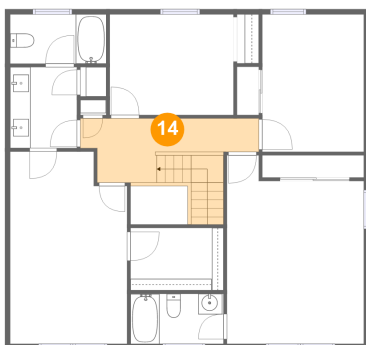
13 Floor 2 - Bedroom



Dimensions: 11'4" x 18'7"
Area: 201 sq. ft
Counted as living area: Yes

Heated: Yes
Finished: Yes
Enclosed: Yes
Contiguous: Yes
Permitted: Yes
Wet space: No
Addition: No
Conversion: No

14 Floor 2 - Hall

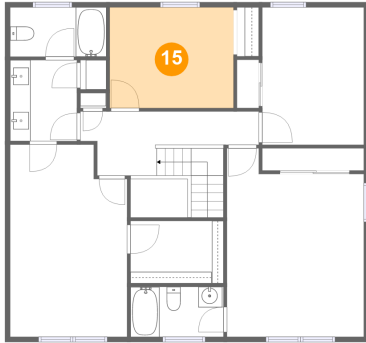


Dimensions: 17'4" x 6'2"
Area: 108 sq. ft
Counted as living area: Yes

Heated: Yes
Finished: Yes
Enclosed: Yes
Contiguous: Yes
Permitted: Yes
Wet space: No
Addition: No
Conversion: No

**25 Charmwood Drive, Blue Ridge, Botetourt County,
Virginia, United States, 24064**

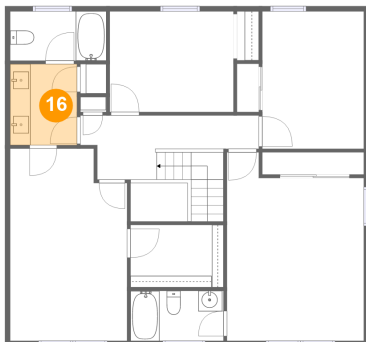
15 Floor 2 - Bedroom



Dimensions: 12'0" x 9'9"
Area: 118 sq. ft
Counted as living area: Yes

Heated: Yes
Finished: Yes
Enclosed: Yes
Contiguous: Yes
Permitted: Yes
Wet space: No
Addition: No
Conversion: No

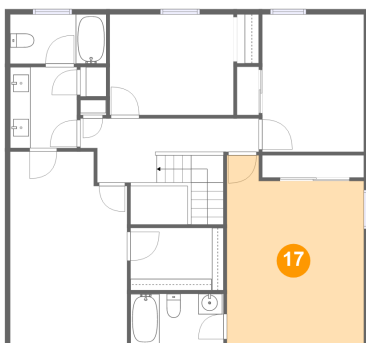
16 Floor 2 - Bath



Dimensions: 6'6" x 7'10"
Area: 51 sq. ft
Counted as living area: Yes

Heated: Yes
Finished: Yes
Enclosed: Yes
Contiguous: Yes
Permitted: Yes
Wet space: Yes
Addition: No
Conversion: No

17 Floor 2 - Bedroom

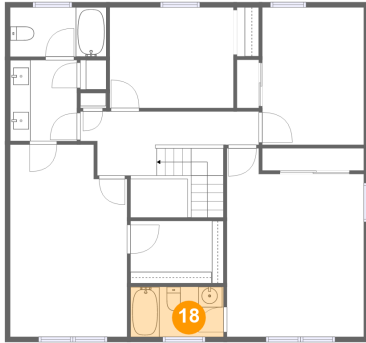


Dimensions: 13'4" x 18'4"
Area: 218 sq. ft
Counted as living area: Yes

Heated: Yes
Finished: Yes
Enclosed: Yes
Contiguous: Yes
Permitted: Yes
Wet space: No
Addition: No
Conversion: No

25 Charmwood Drive, Blue Ridge, Botetourt County, Virginia, United States, 24064

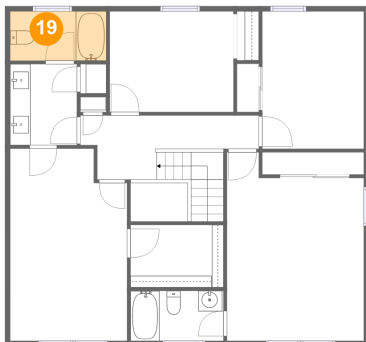
18 Floor 2 - Bath



Dimensions: 9'0" x 4'10"
Area: 44 sq. ft
Counted as living area: Yes

Heated: Yes
Finished: Yes
Enclosed: Yes
Contiguous: Yes
Permitted: Yes
Wet space: Yes
Addition: No
Conversion: No

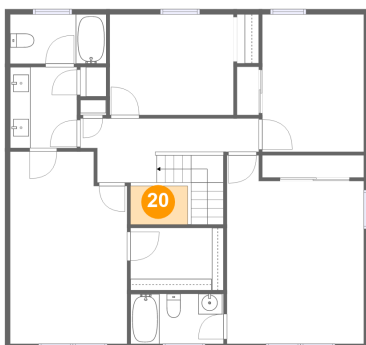
19 Floor 2 - Bath



Dimensions: 9'4" x 4'9"
Area: 45 sq. ft
Counted as living area: Yes

Heated: Yes
Finished: Yes
Enclosed: Yes
Contiguous: Yes
Permitted: Yes
Wet space: Yes
Addition: No
Conversion: No

20 Floor 2 - Open To Below

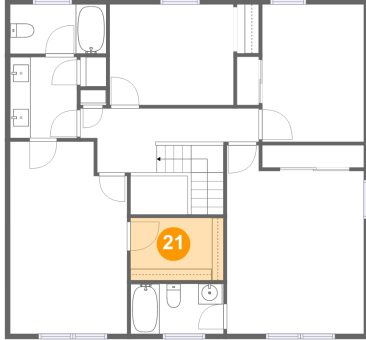


Dimensions: 2'7" x 3'9"
Area: 21 sq. ft
Counted as living area: No

Heated: No
Finished: No
Enclosed: No
Contiguous: Yes
Permitted: No
Wet space: No
Addition: No
Conversion: No

**25 Charmwood Drive, Blue Ridge, Botetourt County,
Virginia, United States, 24064**

21 Floor 2 - Cl



Dimensions: 9'0" x 6'1"
Area: 55 sq. ft
Counted as living area: Yes

Heated: Yes
Finished: Yes
Enclosed: Yes
Contiguous: Yes
Permitted: Yes
Wet space: No
Addition: No
Conversion: No