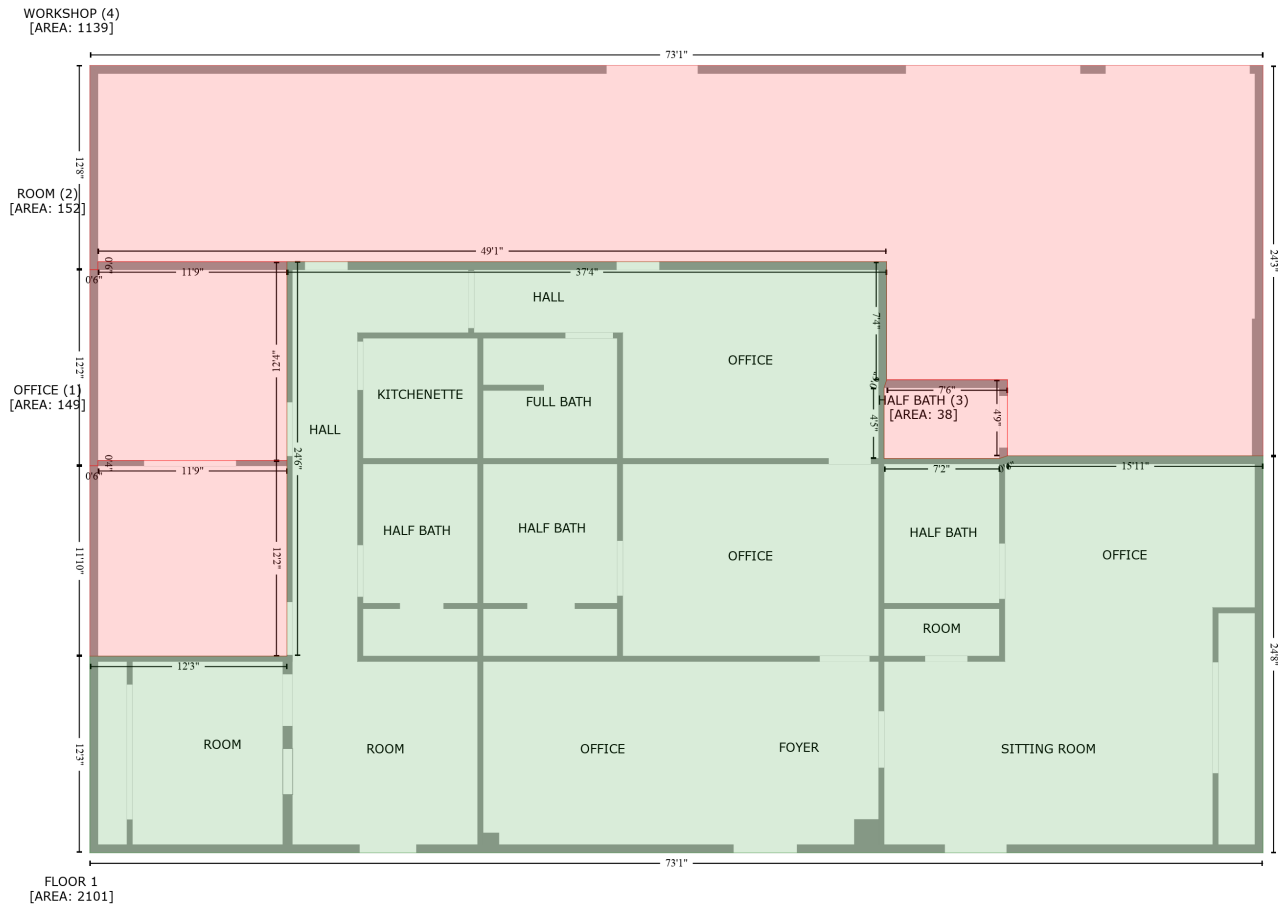


# 4250 Michoud Boulevard, Viavant, New Orleans, Orleans Parish, Louisiana, United States, 70129

Gross Living Area: 2101 sq. ft



Space	Area (sq. ft)	Calculation
FLOOR 1 (Living area)	2101	$-\left((596.5 + 596.5) * (257 - 345.2) + (596.5 + 594.5) * (345.2 - 351.2) + (594.5 + 594.5) * (351.2 - 404) + (594.5 + 680.7) * (404 - 404) + (680.7 + 686.7) * (404 - 402) + (686.7 + 877.7) * (402 - 402) + (877.7 + 877.7) * (402 - 698.4) + (877.7 + 1.1) * (698.4 - 698.4) + (1.1 + 1.1) * (698.4 - 551.5) + (1.1 + 148.4) * (551.5 - 551.5) + (148.4 + 148.4) * (551.5 - 257) + (148.4 + 596.5) * (257 - 257)\right) * 0.5 * 0.00694$
OFFICE (Non-living area)	149	$-\left((148.4 + 148.4) * (405.4 - 551.5) + (148.4 + 1.1) * (551.5 - 551.5) + (1.1 + 1.1) * (551.5 - 409.4) + (1.1 + 7.1) * (409.4 - 409.4) + (7.1 + 7.1) * (409.4 - 405.4) + (7.1 + 148.4) * (405.4 - 405.4)\right) * 0.5 * 0.00694$
ROOM (Non-living area)	152	$-\left((148.4 + 148.4) * (257 - 405.4) + (148.4 + 7.1) * (405.4 - 405.4) + (7.1 + 7.1) * (405.4 - 409.4) + (7.1 + 1.1) * (409.4 - 409.4) + (1.1 + 1.1) * (409.4 - 263) + (1.1 + 7.1) * (263 - 263) + (7.1 + 7.1) * (263 - 257) + (7.1 + 148.4) * (257 - 257)\right) * 0.5 * 0.00694$
HALF BATH (Non-living area)	38	$-\left((686.7 + 686.7) * (345.2 - 402) + (686.7 + 680.7) * (402 - 404) + (680.7 + 594.5) * (404 - 404) + (594.5 + 594.5) * (404 - 351.2) + (594.5 + 596.5) * (351.2 - 345.2) + (596.5 + 686.7) * (345.2 - 345.2)\right) * 0.5 * 0.00694$
WORKSHOP (Non-living area)	1139	$-\left((877.7 + 877.7) * (110.5 - 402) + (877.7 + 686.7) * (402 - 402) + (686.7 + 686.7) * (402 - 345.2) + (686.7 + 596.5) * (345.2 - 345.2) + (596.5 + 596.5) * (345.2 - 257) + (596.5 + 7.1) * (257 - 257) + (7.1 + 7.1) * (257 - 263) + (7.1 + 1.1) * (263 - 263) + (1.1 + 1.1) * (263 - 110.5) + (1.1 + 877.7) * (110.5 - 402)\right) * 0.5 * 0.00694$

4250 Michoud Boulevard, Viavant, New Orleans, Orleans Parish, Louisiana, United States,  
70129

Gross Living Area: 2101 sq. ft

Space	Area (sq. ft)	Calculation <small>Coordinate Polygon Area Algorithm using inches</small>
		$(110.5 - 110.5) * 0.5 * 0.00694$