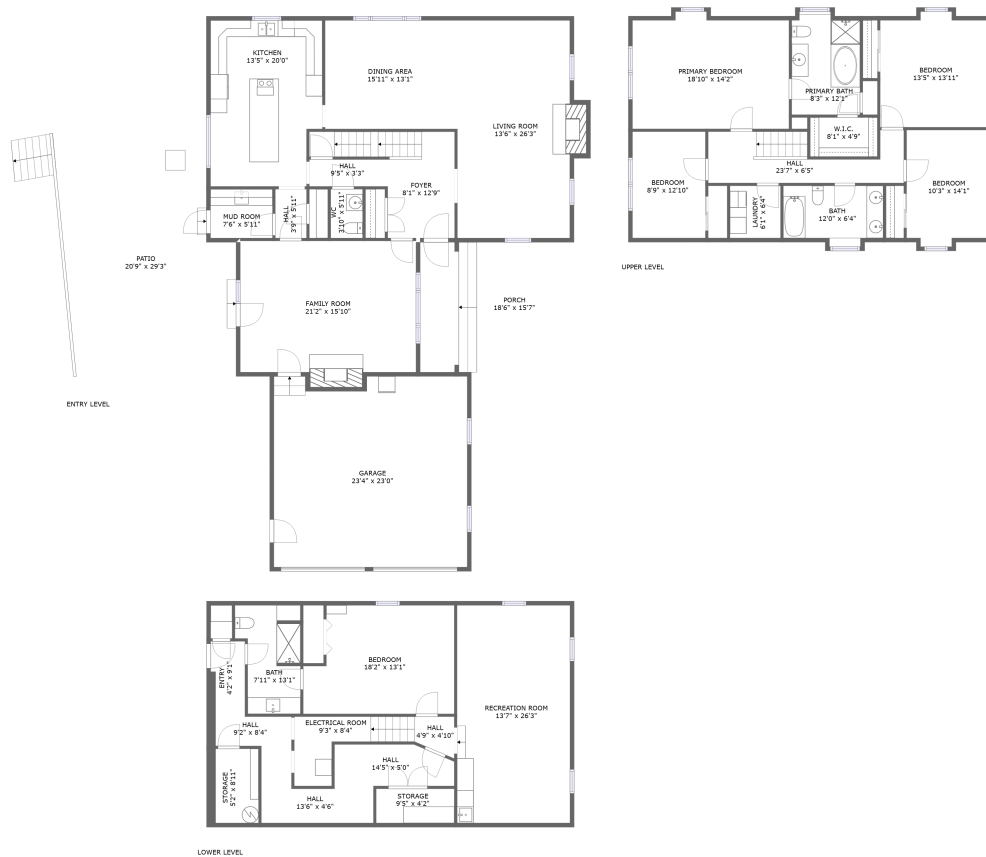



# 4937 Greenlee Road Southwest, Greater Deyerle, Roanoke, Roanoke city, Virginia, United States, 24018



## Property summary

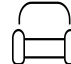
 **1** Garages

 **5** Bedrooms

 **3** Bathrooms

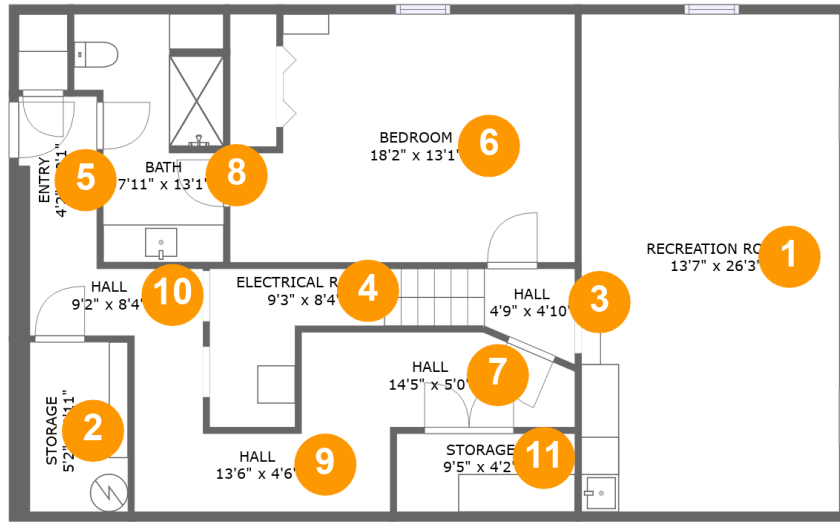
 **1** Half baths

 **3** Floors

 **3,834** Gross living area sqft

 **5,419** Total sqft

4937 Greenlee Road Southwest, Greater Deyerle, Roanoke, Roanoke city, Virginia, United States, 24018



Room dimensions

Floor 1

Total sqft: 1207

Living area: 1036

#		Dimensions	sqft	Counted as living area
1	Recreation Room	13'7" x 26'3"	357 sq. ft	Yes
2	Storage	5'2" x 8'11"	46 sq. ft	No
3	Hall	4'9" x 4'10"	19 sq. ft	Yes
4	Electrical Room	9'3" x 8'4"	68 sq. ft	No
5	Entry	4'2" x 9'1"	34 sq. ft	Yes
6	Bedroom	18'2" x 13'1"	218 sq. ft	Yes
7	Hall	14'5" x 5'0"	67 sq. ft	Yes
8	Bath	7'11" x 13'1"	88 sq. ft	Yes
9	Hall	13'6" x 4'6"	59 sq. ft	Yes
10	Hall	9'2" x 8'4"	50 sq. ft	Yes
11	Storage	9'5" x 4'2"	39 sq. ft	No

# 4937 Greenlee Road Southwest, Greater Deyerle, Roanoke, Roanoke city, Virginia, United States, 24018



## Room dimensions

Floor 2

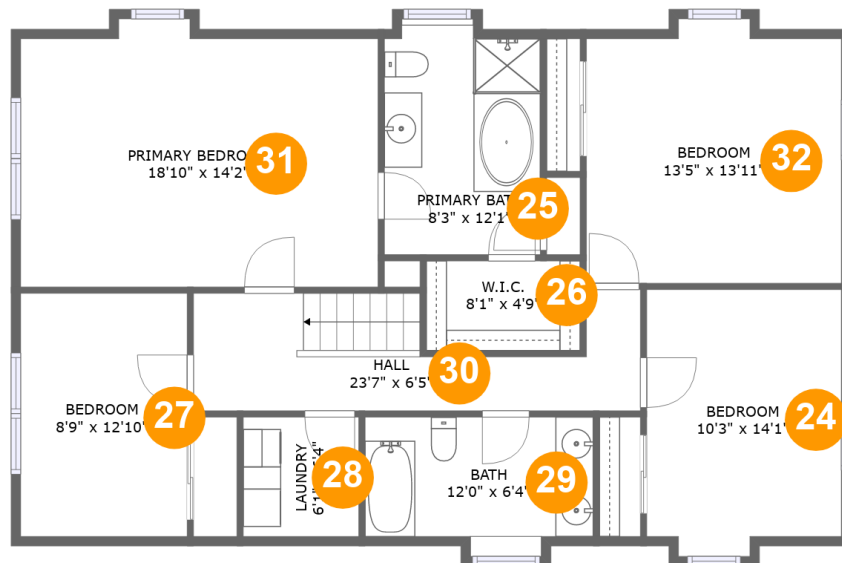
Total sqft: 2980 Living area: 1566

#		Dimensions	sqft	Counted as living area
12	Kitchen	13'5" x 20'0"	257 sq. ft	Yes
13	Family Room	21'2" x 15'10"	347 sq. ft	Yes
14	Foyer	8'1" x 12'9"	132 sq. ft	Yes
15	Hall	9'5" x 3'3"	31 sq. ft	Yes
16	Hall	3'9" x 5'11"	22 sq. ft	Yes
17	Garage	23'4" x 23'0"	522 sq. ft	No
18	Living Room	13'6" x 26'3"	368 sq. ft	Yes
19	Mud Room	7'6" x 5'11"	44 sq. ft	Yes
20	Porch	18'6" x 15'7"	289 sq. ft	No
21	Patio	20'9" x 29'3"	537 sq. ft	No
22	Dining Area	15'11" x 13'1"	209 sq. ft	Yes

**4937 Greenlee Road Southwest, Greater Deyerle,  
Roanoke, Roanoke city, Virginia, United States, 24018**

#		Dimensions	sqft	Counted as living area
23	WC	3'10" x 5'11"	23 sq. ft	Yes

# 4937 Greenlee Road Southwest, Greater Deyerle, Roanoke, Roanoke city, Virginia, United States, 24018



## Room dimensions

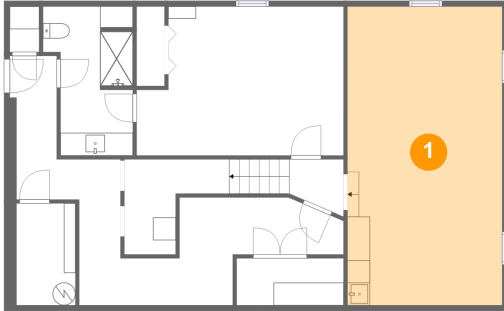
Floor 3

Total sqft: 1232 Living area: 1232

#		Dimensions	sqft	Counted as living area
24	Bedroom	10'3" x 14'1"	138 sq. ft	Yes
25	Primary Bath	8'3" x 12'1"	98 sq. ft	Yes
26	W.I.C.	8'1" x 4'9"	38 sq. ft	Yes
27	Bedroom	8'9" x 12'10"	113 sq. ft	Yes
28	Laundry	6'1" x 6'4"	38 sq. ft	Yes
29	Bath	12'0" x 6'4"	80 sq. ft	Yes
30	Hall	23'7" x 6'5"	117 sq. ft	Yes
31	Primary Bedroom	18'10" x 14'2"	251 sq. ft	Yes
32	Bedroom	13'5" x 13'11"	177 sq. ft	Yes

# 4937 Greenlee Road Southwest, Greater Deyerle, Roanoke, Roanoke city, Virginia, United States, 24018

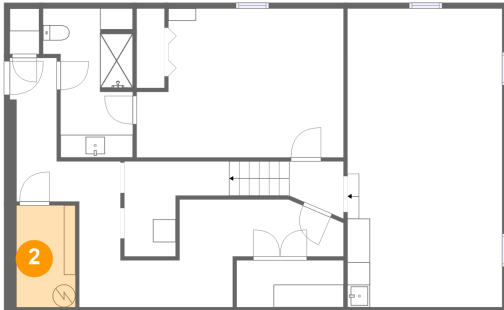
## 1 Floor 1 - Recreation Room



Dimensions: 13'7" x 26'3"  
Area: 357 sq. ft  
Counted as living area: Yes

Heated: Yes  
Finished: Yes  
Enclosed: Yes  
Contiguous: Yes  
Permitted: Yes  
Wet space: No  
Addition: No  
Conversion: No

## 2 Floor 1 - Storage

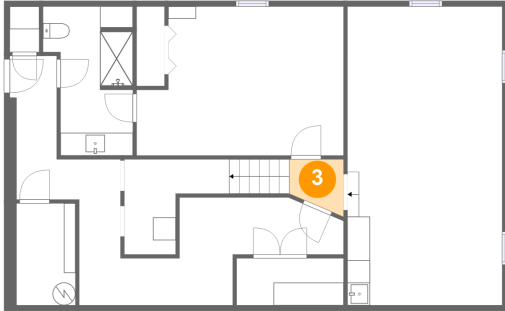


Dimensions: 5'2" x 8'11"  
Area: 46 sq. ft  
Counted as living area: No

Heated: No  
Finished: No  
Enclosed: No  
Contiguous: Yes  
Permitted: Yes  
Wet space: No  
Addition: No  
Conversion: No

# 4937 Greenlee Road Southwest, Greater Deyerle, Roanoke, Roanoke city, Virginia, United States, 24018

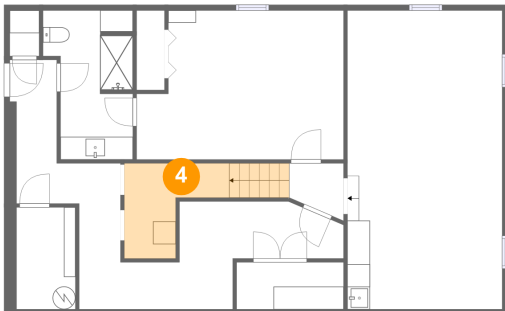
## 3 Floor 1 - Hall



Dimensions: 4'9" x 4'10"  
Area: 19 sq. ft  
Counted as living area: Yes

Heated: Yes  
Finished: Yes  
Enclosed: Yes  
Contiguous: Yes  
Permitted: Yes  
Wet space: No  
Addition: No  
Conversion: No

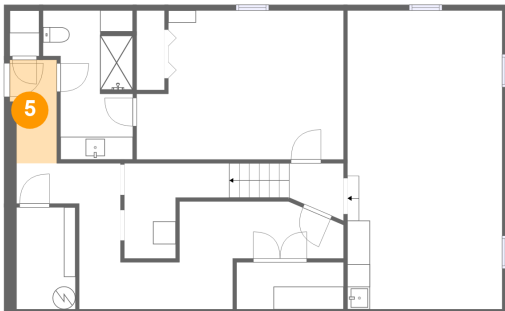
## 4 Floor 1 - Electrical Room



Dimensions: 9'3" x 8'4"  
Area: 68 sq. ft  
Counted as living area: No

Heated: No  
Finished: No  
Enclosed: Yes  
Contiguous: Yes  
Permitted: Yes  
Wet space: No  
Addition: No  
Conversion: No

## 5 Floor 1 - Entry

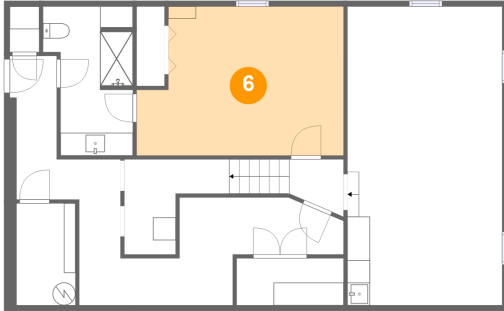


Dimensions: 4'2" x 9'1"  
Area: 34 sq. ft  
Counted as living area: Yes

Heated: Yes  
Finished: Yes  
Enclosed: Yes  
Contiguous: Yes  
Permitted: Yes  
Wet space: No  
Addition: No  
Conversion: No

# 4937 Greenlee Road Southwest, Greater Deyerle, Roanoke, Roanoke city, Virginia, United States, 24018

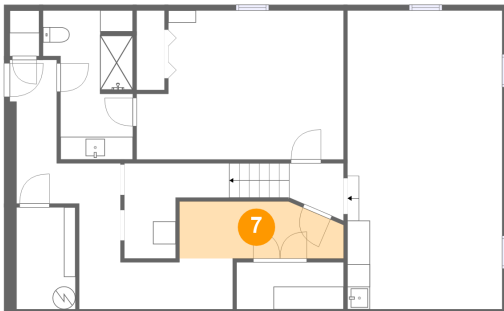
## 6 Floor 1 - Bedroom



Dimensions: 18'2" x 13'1"  
Area: 218 sq. ft  
Counted as living area: Yes

Heated: Yes  
Finished: Yes  
Enclosed: Yes  
Contiguous: Yes  
Permitted: Yes  
Wet space: No  
Addition: No  
Conversion: No

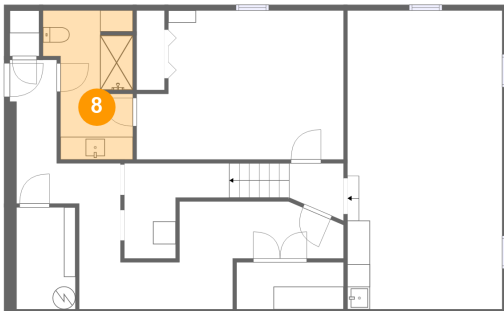
## 7 Floor 1 - Hall



Dimensions: 14'5" x 5'0"  
Area: 67 sq. ft  
Counted as living area: Yes

Heated: Yes  
Finished: Yes  
Enclosed: Yes  
Contiguous: Yes  
Permitted: Yes  
Wet space: No  
Addition: No  
Conversion: No

## 8 Floor 1 - Bath



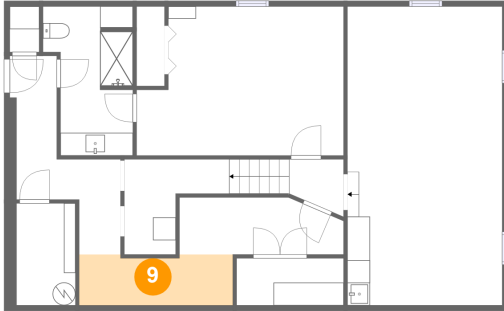
Dimensions: 7'11" x 13'1"  
Area: 88 sq. ft  
Counted as living area: Yes

Heated: Yes  
Finished: Yes  
Enclosed: Yes  
Contiguous: Yes  
Permitted: Yes  
Wet space: Yes  
Addition: No  
Conversion: No



# 4937 Greenlee Road Southwest, Greater Deyerle, Roanoke, Roanoke city, Virginia, United States, 24018

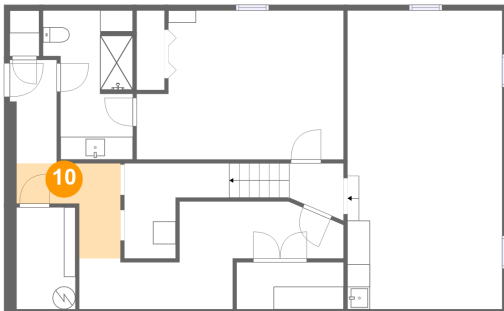
## 9 Floor 1 - Hall



Dimensions: 13'6" x 4'6"  
Area: 59 sq. ft  
Counted as living area: Yes

Heated: Yes  
Finished: Yes  
Enclosed: Yes  
Contiguous: Yes  
Permitted: Yes  
Wet space: No  
Addition: No  
Conversion: No

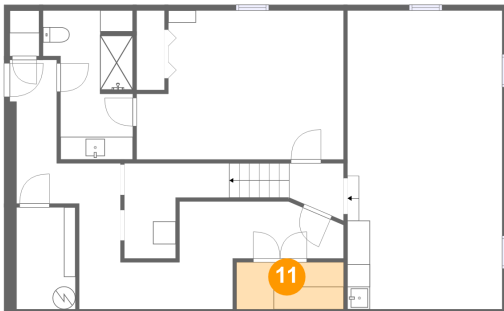
## 10 Floor 1 - Hall



Dimensions: 9'2" x 8'4"  
Area: 50 sq. ft  
Counted as living area: Yes

Heated: Yes  
Finished: Yes  
Enclosed: Yes  
Contiguous: Yes  
Permitted: Yes  
Wet space: No  
Addition: No  
Conversion: No

## 11 Floor 1 - Storage

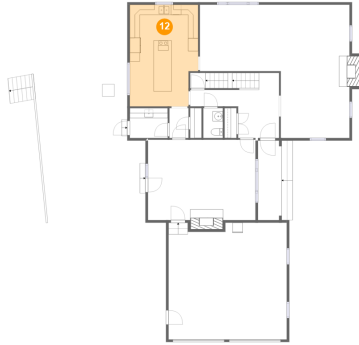


Dimensions: 9'5" x 4'2"  
Area: 39 sq. ft  
Counted as living area: No

Heated: No  
Finished: Yes  
Enclosed: No  
Contiguous: Yes  
Permitted: Yes  
Wet space: No  
Addition: No  
Conversion: No

# 4937 Greenlee Road Southwest, Greater Deyerle, Roanoke, Roanoke city, Virginia, United States, 24018

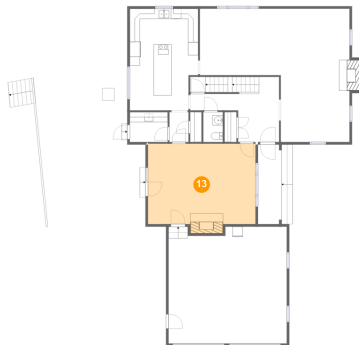
## 12 Floor 2 - Kitchen



Dimensions: 13'5" x 20'0"  
Area: 257 sq. ft  
Counted as living area: Yes

Heated: Yes  
Finished: Yes  
Enclosed: Yes  
Contiguous: Yes  
Permitted: Yes  
Wet space: No  
Addition: No  
Conversion: No

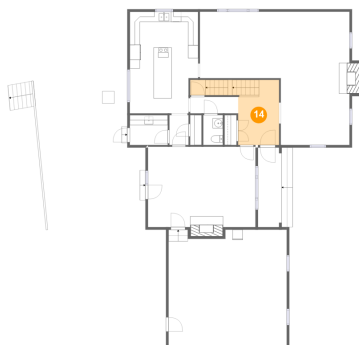
## 13 Floor 2 - Family Room



Dimensions: 21'2" x 15'10"  
Area: 347 sq. ft  
Counted as living area: Yes

Heated: Yes  
Finished: Yes  
Enclosed: Yes  
Contiguous: Yes  
Permitted: Yes  
Wet space: No  
Addition: No  
Conversion: No

## 14 Floor 2 - Foyer



Dimensions: 8'1" x 12'9"  
Area: 132 sq. ft  
Counted as living area: Yes

Heated: Yes  
Finished: Yes  
Enclosed: Yes  
Contiguous: Yes  
Permitted: Yes  
Wet space: No  
Addition: No  
Conversion: No

# 4937 Greenlee Road Southwest, Greater Deyerle, Roanoke, Roanoke city, Virginia, United States, 24018

## 15 Floor 2 - Hall



Dimensions: 9'5" x 3'3"  
Area: 31 sq. ft  
Counted as living area: Yes

Heated: Yes  
Finished: Yes  
Enclosed: Yes  
Contiguous: Yes  
Permitted: Yes  
Wet space: No  
Addition: No  
Conversion: No

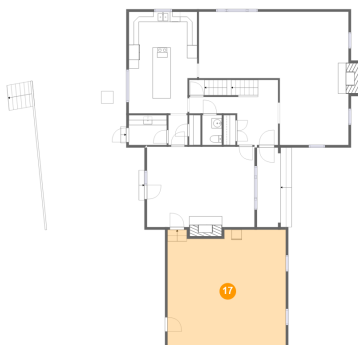
## 16 Floor 2 - Hall



Dimensions: 3'9" x 5'11"  
Area: 22 sq. ft  
Counted as living area: Yes

Heated: Yes  
Finished: Yes  
Enclosed: Yes  
Contiguous: Yes  
Permitted: Yes  
Wet space: No  
Addition: No  
Conversion: No

## 17 Floor 2 - Garage



Dimensions: 23'4" x 23'0"  
Area: 522 sq. ft  
Counted as living area: No

Heated: No  
Finished: No  
Enclosed: Yes  
Contiguous: Yes  
Permitted: Yes  
Wet space: No  
Addition: No  
Conversion: No

# 4937 Greenlee Road Southwest, Greater Deyerle, Roanoke, Roanoke city, Virginia, United States, 24018

## 18 Floor 2 - Living Room



Dimensions: 13'6" x 26'3"  
Area: 368 sq. ft  
Counted as living area: Yes

Heated: Yes  
Finished: Yes  
Enclosed: Yes  
Contiguous: Yes  
Permitted: Yes  
Wet space: No  
Addition: No  
Conversion: No

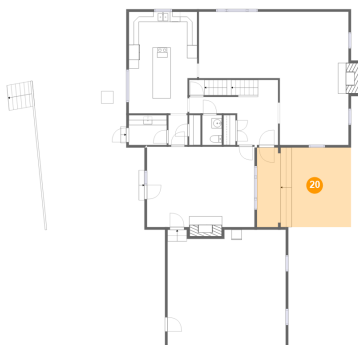
## 19 Floor 2 - Mud Room



Dimensions: 7'6" x 5'11"  
Area: 44 sq. ft  
Counted as living area: Yes

Heated: Yes  
Finished: Yes  
Enclosed: Yes  
Contiguous: Yes  
Permitted: Yes  
Wet space: No  
Addition: No  
Conversion: No

## 20 Floor 2 - Porch



Dimensions: 18'6" x 15'7"  
Area: 289 sq. ft  
Counted as living area: No

Heated: No  
Finished: Yes  
Enclosed: No  
Contiguous: Yes  
Permitted: Yes  
Wet space: No  
Addition: No  
Conversion: No

# 4937 Greenlee Road Southwest, Greater Deyerle, Roanoke, Roanoke city, Virginia, United States, 24018

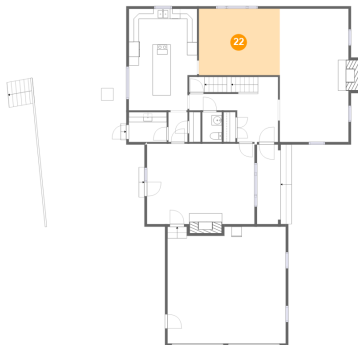
## 21 Floor 2 - Patio



Dimensions: 20'9" x 29'3"  
Area: 537 sq. ft  
Counted as living area: No

Heated: No  
Finished: Yes  
Enclosed: No  
Contiguous: Yes  
Permitted: Yes  
Wet space: No  
Addition: No  
Conversion: No

## 22 Floor 2 - Dining Area



Dimensions: 15'11" x 13'1"  
Area: 209 sq. ft  
Counted as living area: Yes

Heated: Yes  
Finished: Yes  
Enclosed: Yes  
Contiguous: Yes  
Permitted: Yes  
Wet space: No  
Addition: No  
Conversion: No

## 23 Floor 2 - WC

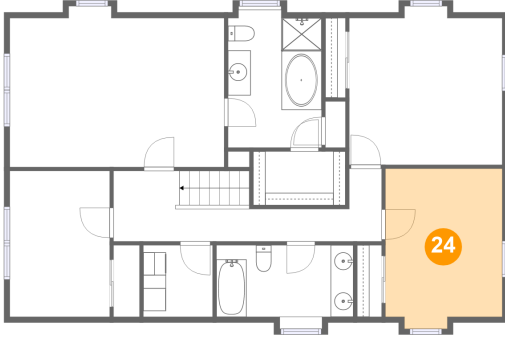


Dimensions: 3'10" x 5'11"  
Area: 23 sq. ft  
Counted as living area: Yes

Heated: Yes  
Finished: Yes  
Enclosed: Yes  
Contiguous: Yes  
Permitted: Yes  
Wet space: No  
Addition: No  
Conversion: No

# 4937 Greenlee Road Southwest, Greater Deyerle, Roanoke, Roanoke city, Virginia, United States, 24018

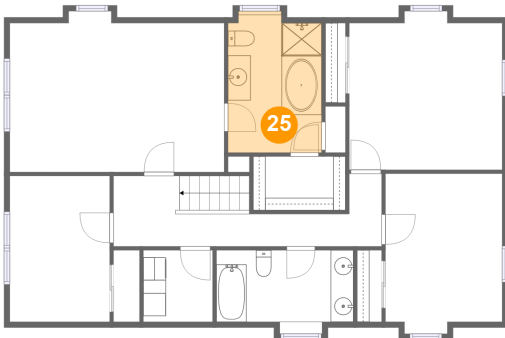
## 24 Floor 3 - Bedroom



Dimensions: 10'3" x 14'1"  
Area: 138 sq. ft  
Counted as living area: Yes

Heated: Yes  
Finished: Yes  
Enclosed: Yes  
Contiguous: Yes  
Permitted: Yes  
Wet space: No  
Addition: No  
Conversion: No

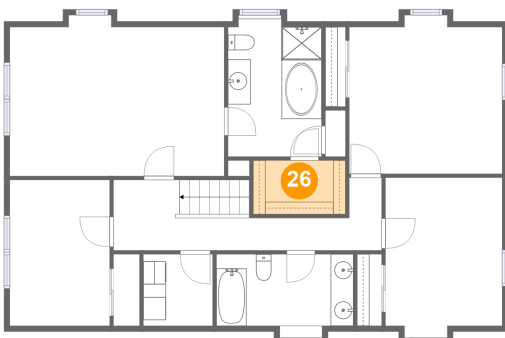
## 25 Floor 3 - Primary Bath



Dimensions: 8'3" x 12'1"  
Area: 98 sq. ft  
Counted as living area: Yes

Heated: Yes  
Finished: Yes  
Enclosed: Yes  
Contiguous: Yes  
Permitted: Yes  
Wet space: Yes  
Addition: No  
Conversion: No

## 26 Floor 3 - W.I.C.

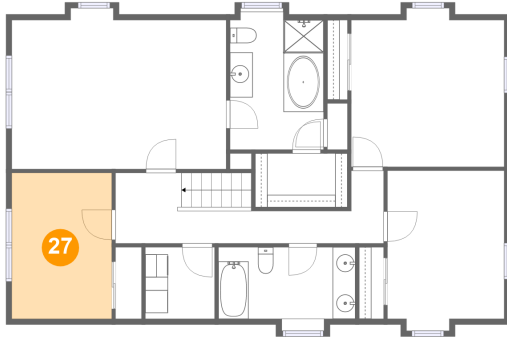


Dimensions: 8'1" x 4'9"  
Area: 38 sq. ft  
Counted as living area: Yes

Heated: Yes  
Finished: Yes  
Enclosed: Yes  
Contiguous: Yes  
Permitted: Yes  
Wet space: No  
Addition: No  
Conversion: No

# 4937 Greenlee Road Southwest, Greater Deyerle, Roanoke, Roanoke city, Virginia, United States, 24018

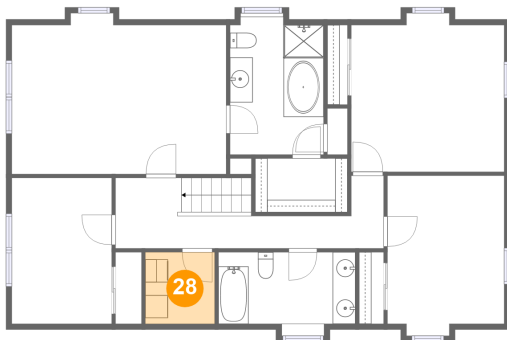
## 27 Floor 3 - Bedroom



Dimensions: 8'9" x 12'10"  
Area: 113 sq. ft  
Counted as living area: Yes

Heated: Yes  
Finished: Yes  
Enclosed: Yes  
Contiguous: Yes  
Permitted: Yes  
Wet space: No  
Addition: No  
Conversion: No

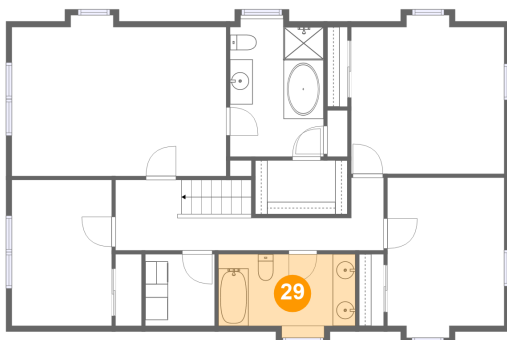
## 28 Floor 3 - Laundry



Dimensions: 6'1" x 6'4"  
Area: 38 sq. ft  
Counted as living area: Yes

Heated: Yes  
Finished: Yes  
Enclosed: Yes  
Contiguous: Yes  
Permitted: Yes  
Wet space: No  
Addition: No  
Conversion: No

## 29 Floor 3 - Bath

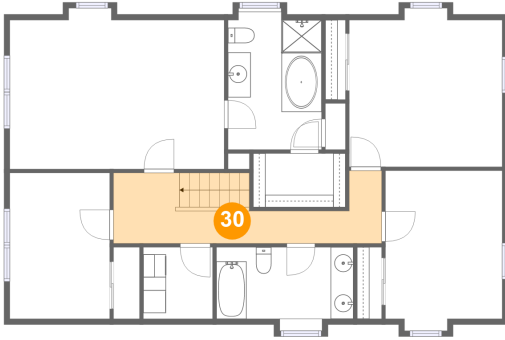


Dimensions: 12'0" x 6'4"  
Area: 80 sq. ft  
Counted as living area: Yes

Heated: Yes  
Finished: Yes  
Enclosed: Yes  
Contiguous: Yes  
Permitted: Yes  
Wet space: Yes  
Addition: No  
Conversion: No

**4937 Greenlee Road Southwest, Greater Deyerle,  
Roanoke, Roanoke city, Virginia, United States, 24018**

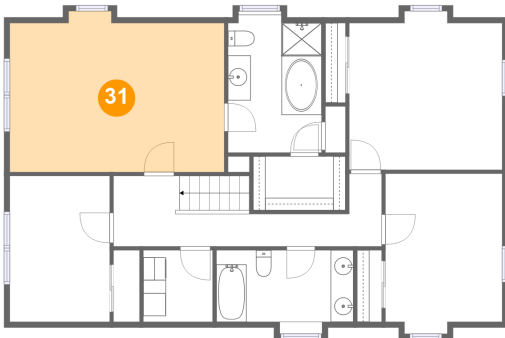
**30 Floor 3 - Hall**



Dimensions: 23'7" x 6'5"  
Area: 117 sq. ft  
Counted as living area: Yes

Heated: Yes  
Finished: Yes  
Enclosed: Yes  
Contiguous: Yes  
Permitted: Yes  
Wet space: No  
Addition: No  
Conversion: No

**31 Floor 3 - Primary Bedroom**



Dimensions: 18'10" x 14'2"  
Area: 251 sq. ft  
Counted as living area: Yes

Heated: Yes  
Finished: Yes  
Enclosed: Yes  
Contiguous: Yes  
Permitted: Yes  
Wet space: No  
Addition: No  
Conversion: No

**32 Floor 3 - Bedroom**



Dimensions: 13'5" x 13'11"  
Area: 177 sq. ft  
Counted as living area: Yes

Heated: Yes  
Finished: Yes  
Enclosed: Yes  
Contiguous: Yes  
Permitted: Yes  
Wet space: No  
Addition: No  
Conversion: No