



Home report


21 Bright Summer Way, Wallace Township, Glenmoore, Chester County, Pennsylvania, United States, 19343





Property summary


 **1** Garages


 **4** Bedrooms

 **2** Bathrooms

 **1** Half baths

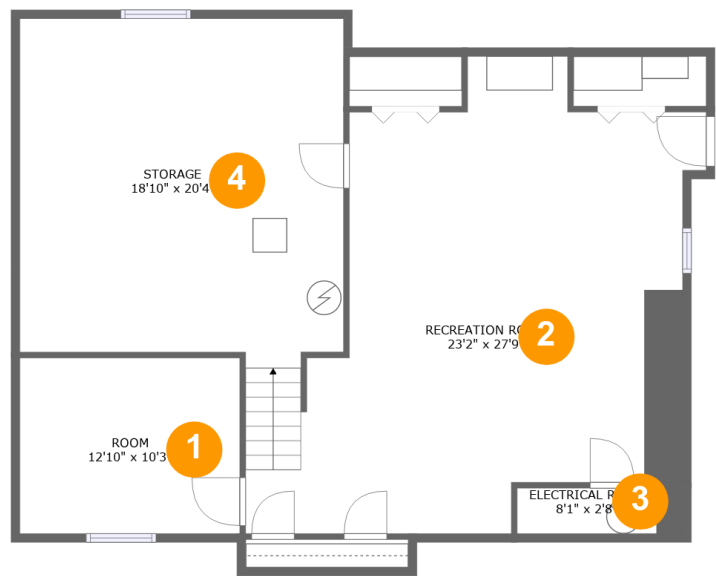
 **3** Floors

 **3,328** Gross living area sqft

 **4,377** Total sqft

Home report

21 Bright Summer Way, Wallace Township, Glenmoore, Chester County, Pennsylvania, United States, 19343



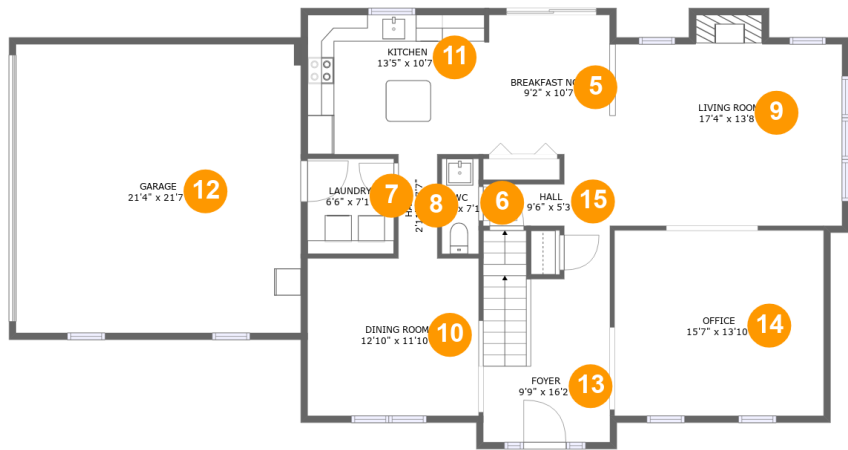
Room dimensions

Floor 1 Total sqft: 1215 Living area: 771

#		Max Dimensions	sqft	Included
1	Room	12'10" x 10'3"	131 sq. ft	Yes
2	Recreation Room	23'2" x 27'9"	530 sq. ft	Yes
3	Electrical Room	8'1" x 2'8"	26 sq. ft	No
4	Storage	18'10" x 20'4"	369 sq. ft	No

Home report

21 Bright Summer Way, Wallace Township, Glenmoore, Chester County, Pennsylvania, United States, 19343



Room dimensions

Floor 2 Total sqft: 1738 Living area: 1232

#		Max Dimensions	sqft	Included
5	Breakfast Nook	9'2" x 10'7"	96 sq. ft	Yes
6	WC	2'9" x 7'1"	20 sq. ft	Yes
7	Laundry	6'6" x 7'1"	46 sq. ft	Yes
8	Hall	2'11" x 7'7"	22 sq. ft	Yes
9	Living Room	17'4" x 13'8"	247 sq. ft	Yes
10	Dining Room	12'10" x 11'10"	151 sq. ft	Yes
11	Kitchen	13'5" x 10'7"	140 sq. ft	Yes
12	Garage	21'4" x 21'7"	460 sq. ft	No
13	Foyer	9'9" x 16'2"	143 sq. ft	Yes
14	Office	15'7" x 13'10"	217 sq. ft	Yes
15	Hall	9'6" x 5'3"	37 sq. ft	Yes

Home report

21 Bright Summer Way, Wallace Township, Glenmoore, Chester County, Pennsylvania, United States, 19343

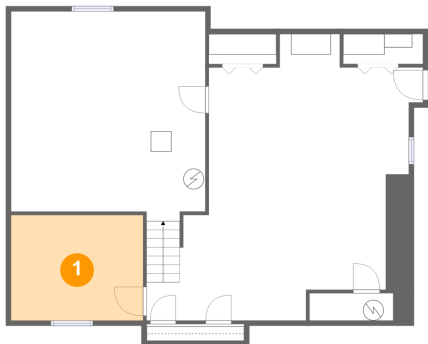


Room dimensions

Floor 3 Total sqft: 1424 Living area: 1325

#		Max Dimensions	sqft	Included
16	W.I.C.	6'9" x 5'4"	36 sq. ft	Yes
17	Hall	2'8" x 5'6"	15 sq. ft	Yes
18	Bedroom	12'9" x 13'7"	174 sq. ft	Yes
19	Hall	24'8" x 3'2"	136 sq. ft	Yes
20	Bedroom	13'3" x 10'5"	138 sq. ft	Yes
21	Open To Below	9'6" x 12'2"	93 sq. ft	No
22	Primary Bedroom	15'8" x 16'8"	260 sq. ft	Yes
23	Primary Bath	12'8" x 10'10"	119 sq. ft	Yes
24	Bath	6'4" x 10'5"	65 sq. ft	Yes
25	Bedroom	12'11" x 16'2"	209 sq. ft	Yes

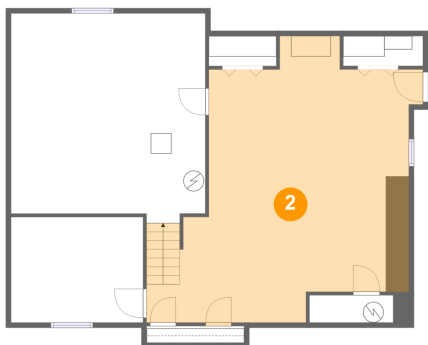
1 Floor 1 - Room



Max Dimensions: 12'10" x 10'3"
Calculated Area: 131 sq. ft
Included: Yes

Heated: Yes
Finished: Yes
Enclosed: Yes
Contiguous: Yes
Permitted: Yes
Wet space: No
Addition: No
Conversion: No

2 Floor 1 - Recreation Room

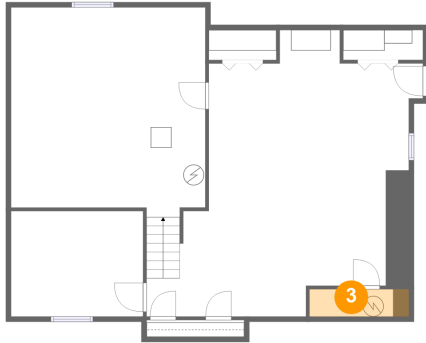


Max Dimensions: 23'2" x 27'9"
Calculated Area: 530 sq. ft
Included: Yes

Heated: Yes
Finished: Yes
Enclosed: Yes
Contiguous: Yes
Permitted: Yes
Wet space: No
Addition: No
Conversion: No

21 Bright Summer Way, Wallace Township, Glenmoore, Chester County, Pennsylvania, United States, 19343

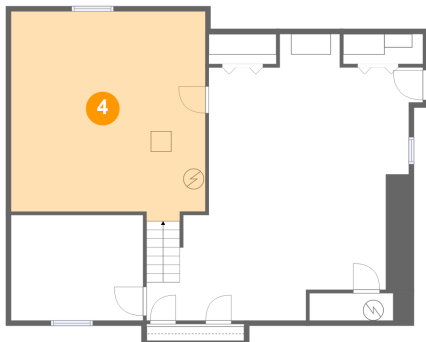
3 Floor 1 - Electrical Room



Max Dimensions: 8'1" x 2'8"
Calculated Area: 26 sq. ft
Included: No

Heated: No
Finished: No
Enclosed: Yes
Contiguous: Yes
Permitted: Yes
Wet space: No
Addition: No
Conversion: No

4 Floor 1 - Storage



Max Dimensions: 18'10" x 20'4"
Calculated Area: 369 sq. ft
Included: No

Heated: No
Finished: No
Enclosed: No
Contiguous: Yes
Permitted: Yes
Wet space: No
Addition: No
Conversion: No

5 Floor 2 - Breakfast Nook



Max Dimensions: 9'2" x 10'7"
Calculated Area: 96 sq. ft
Included: Yes

Heated: Yes
Finished: Yes
Enclosed: Yes
Contiguous: Yes
Permitted: Yes
Wet space: No
Addition: No
Conversion: No

21 Bright Summer Way, Wallace Township, Glenmoore, Chester County, Pennsylvania, United States, 19343

6 Floor 2 - WC



Max Dimensions: 2'9" x 7'1"
Calculated Area: 20 sq. ft
Included: Yes

Heated: Yes
Finished: Yes
Enclosed: Yes
Contiguous: Yes
Permitted: Yes
Wet space: Yes
Addition: No
Conversion: No

7 Floor 2 - Laundry



Max Dimensions: 6'6" x 7'1"
Calculated Area: 46 sq. ft
Included: Yes

Heated: Yes
Finished: Yes
Enclosed: Yes
Contiguous: Yes
Permitted: Yes
Wet space: No
Addition: No
Conversion: No

8 Floor 2 - Hall



Max Dimensions: 2'11" x 7'7"
Calculated Area: 22 sq. ft
Included: Yes

Heated: Yes
Finished: Yes
Enclosed: Yes
Contiguous: Yes
Permitted: Yes
Wet space: No
Addition: No
Conversion: No

21 Bright Summer Way, Wallace Township, Glenmoore, Chester County, Pennsylvania, United States, 19343

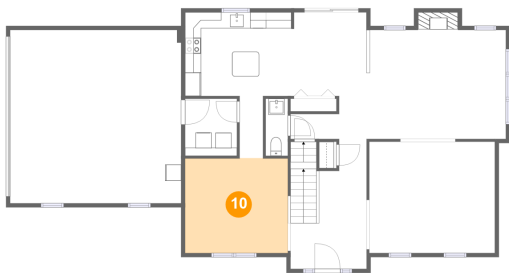
9 Floor 2 - Living Room



Max Dimensions: 17'4" x 13'8"
Calculated Area: 247 sq. ft
Included: Yes

Heated: Yes
Finished: Yes
Enclosed: Yes
Contiguous: Yes
Permitted: Yes
Wet space: No
Addition: No
Conversion: No

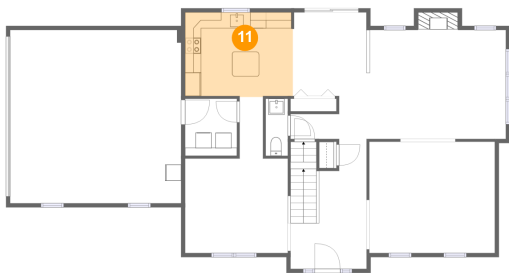
10 Floor 2 - Dining Room



Max Dimensions: 12'10" x 11'10"
Calculated Area: 151 sq. ft
Included: Yes

Heated: Yes
Finished: Yes
Enclosed: Yes
Contiguous: Yes
Permitted: Yes
Wet space: No
Addition: No
Conversion: No

11 Floor 2 - Kitchen



Max Dimensions: 13'5" x 10'7"
Calculated Area: 140 sq. ft
Included: Yes

Heated: Yes
Finished: Yes
Enclosed: Yes
Contiguous: Yes
Permitted: Yes
Wet space: No
Addition: No
Conversion: No

21 Bright Summer Way, Wallace Township, Glenmoore, Chester County, Pennsylvania, United States, 19343

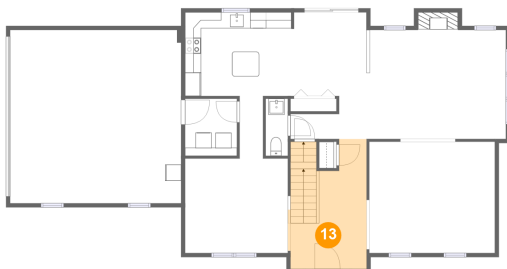
12 Floor 2 - Garage



Max Dimensions: 21'4" x 21'7"
Calculated Area: 460 sq. ft
Included: No

Heated: No
Finished: No
Enclosed: Yes
Contiguous: Yes
Permitted: Yes
Wet space: No
Addition: No
Conversion: No

13 Floor 2 - Foyer



Max Dimensions: 9'9" x 16'2"
Calculated Area: 143 sq. ft
Included: Yes

Heated: Yes
Finished: Yes
Enclosed: Yes
Contiguous: Yes
Permitted: Yes
Wet space: No
Addition: No
Conversion: No

14 Floor 2 - Office



Max Dimensions: 15'7" x 13'10"
Calculated Area: 217 sq. ft
Included: Yes

Heated: Yes
Finished: Yes
Enclosed: Yes
Contiguous: Yes
Permitted: Yes
Wet space: No
Addition: No
Conversion: No

21 Bright Summer Way, Wallace Township, Glenmoore, Chester County, Pennsylvania, United States, 19343

15 Floor 2 - Hall



Max Dimensions: 9'6" x 5'3"
Calculated Area: 37 sq. ft
Included: Yes

Heated: Yes
Finished: Yes
Enclosed: Yes
Contiguous: Yes
Permitted: Yes
Wet space: No
Addition: No
Conversion: No

16 Floor 3 - W.I.C.



Max Dimensions: 6'9" x 5'4"
Calculated Area: 36 sq. ft
Included: Yes

Heated: Yes
Finished: Yes
Enclosed: Yes
Contiguous: Yes
Permitted: Yes
Wet space: No
Addition: No
Conversion: No

17 Floor 3 - Hall



Max Dimensions: 2'8" x 5'6"
Calculated Area: 15 sq. ft
Included: Yes

Heated: Yes
Finished: Yes
Enclosed: Yes
Contiguous: Yes
Permitted: Yes
Wet space: No
Addition: No
Conversion: No

21 Bright Summer Way, Wallace Township, Glenmoore, Chester County, Pennsylvania, United States, 19343

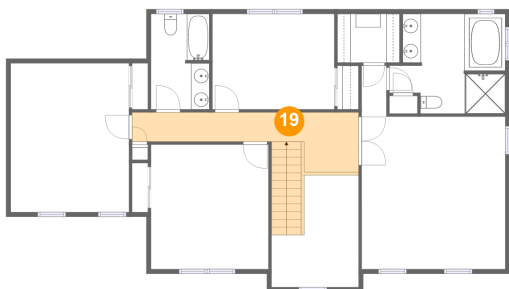
18 Floor 3 - Bedroom



Max Dimensions: 12'9" x 13'7"
Calculated Area: 174 sq. ft
Included: Yes

Heated: Yes
Finished: Yes
Enclosed: Yes
Contiguous: Yes
Permitted: Yes
Wet space: No
Addition: No
Conversion: No

19 Floor 3 - Hall



Max Dimensions: 24'8" x 3'2"
Calculated Area: 136 sq. ft
Included: Yes

Heated: Yes
Finished: Yes
Enclosed: Yes
Contiguous: Yes
Permitted: Yes
Wet space: No
Addition: No
Conversion: No

20 Floor 3 - Bedroom

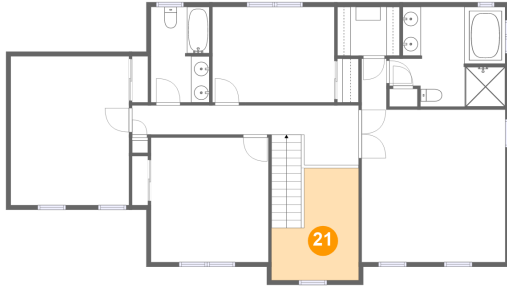


Max Dimensions: 13'3" x 10'5"
Calculated Area: 138 sq. ft
Included: Yes

Heated: Yes
Finished: Yes
Enclosed: Yes
Contiguous: Yes
Permitted: Yes
Wet space: No
Addition: No
Conversion: No

21 Bright Summer Way, Wallace Township, Glenmoore, Chester County, Pennsylvania, United States, 19343

21 Floor 3 - Open To Below



Max Dimensions: 9'6" x 12'2"
Calculated Area: 93 sq. ft
Included: No

Heated: No
Finished: No
Enclosed: No
Contiguous: Yes
Permitted: No
Wet space: No
Addition: No
Conversion: No

22 Floor 3 - Primary Bedroom



Max Dimensions: 15'8" x 16'8"
Calculated Area: 260 sq. ft
Included: Yes

Heated: Yes
Finished: Yes
Enclosed: Yes
Contiguous: Yes
Permitted: Yes
Wet space: No
Addition: No
Conversion: No

23 Floor 3 - Primary Bath



Max Dimensions: 12'8" x 10'10"
Calculated Area: 119 sq. ft
Included: Yes

Heated: Yes
Finished: Yes
Enclosed: Yes
Contiguous: Yes
Permitted: Yes
Wet space: Yes
Addition: No
Conversion: No

24 Floor 3 - Bath



Max Dimensions: 6'4" x 10'5"
Calculated Area: 65 sq. ft
Included: Yes

Heated: Yes
Finished: Yes
Enclosed: Yes
Contiguous: Yes
Permitted: Yes
Wet space: Yes
Addition: No
Conversion: No

25 Floor 3 - Bedroom



Max Dimensions: 12'11" x 16'2"
Calculated Area: 209 sq. ft
Included: Yes

Heated: Yes
Finished: Yes
Enclosed: Yes
Contiguous: Yes
Permitted: Yes
Wet space: No
Addition: No
Conversion: No