

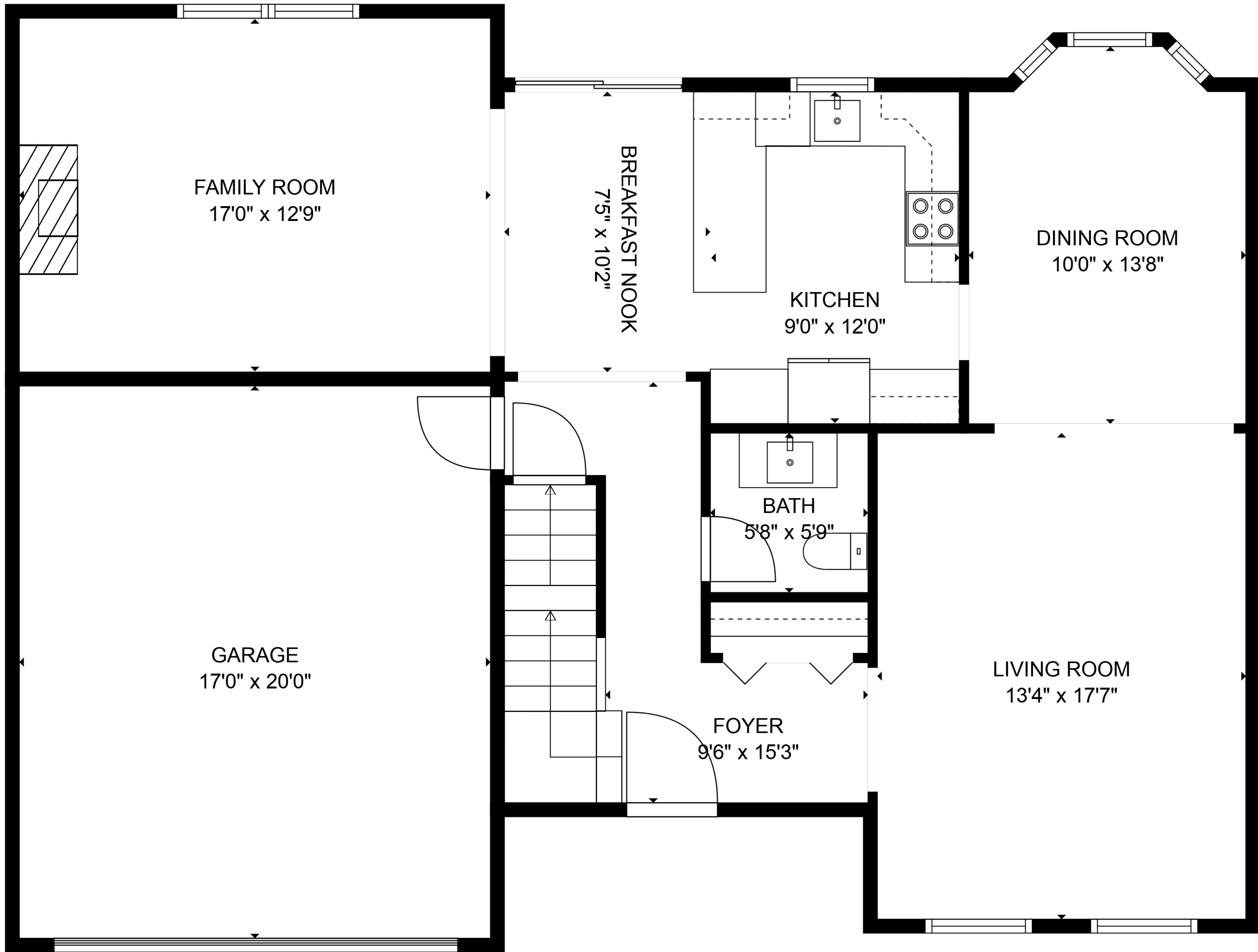
BASEMENT
13'3" x 17'7"

BASEMENT
23'5" x 28'8"

TOTAL: 2709 sq. ft
BELOW GROUND: 529 sq. ft, FLOOR 2: 977 sq. ft, FLOOR 3: 1203 sq. ft
EXCLUDED AREAS: BASEMENT: 185 sq. ft, LOW CEILING: 222 sq. ft, GARAGE: 340 sq. ft

Sizes and Dimensions are approximate





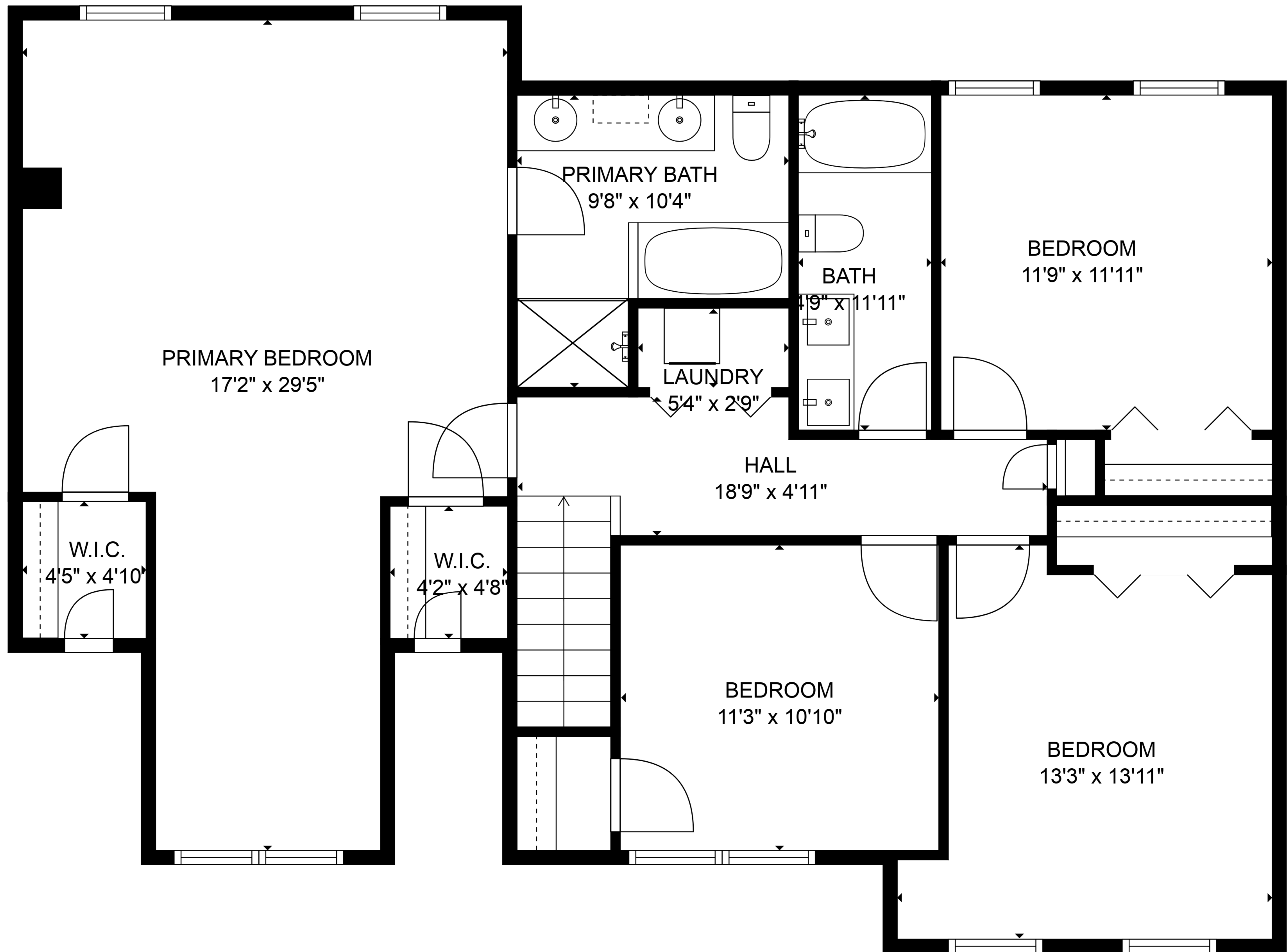
TOTAL: 2709 sq. ft

BELOW GROUND: 529 sq. ft, FLOOR 2: 977 sq. ft, FLOOR 3: 1203 sq. ft

EXCLUDED AREAS: BASEMENT: 185 sq. ft, LOW CEILING: 222 sq. ft, GARAGE: 340 sq. ft

Sizes and Dimensions are approximate

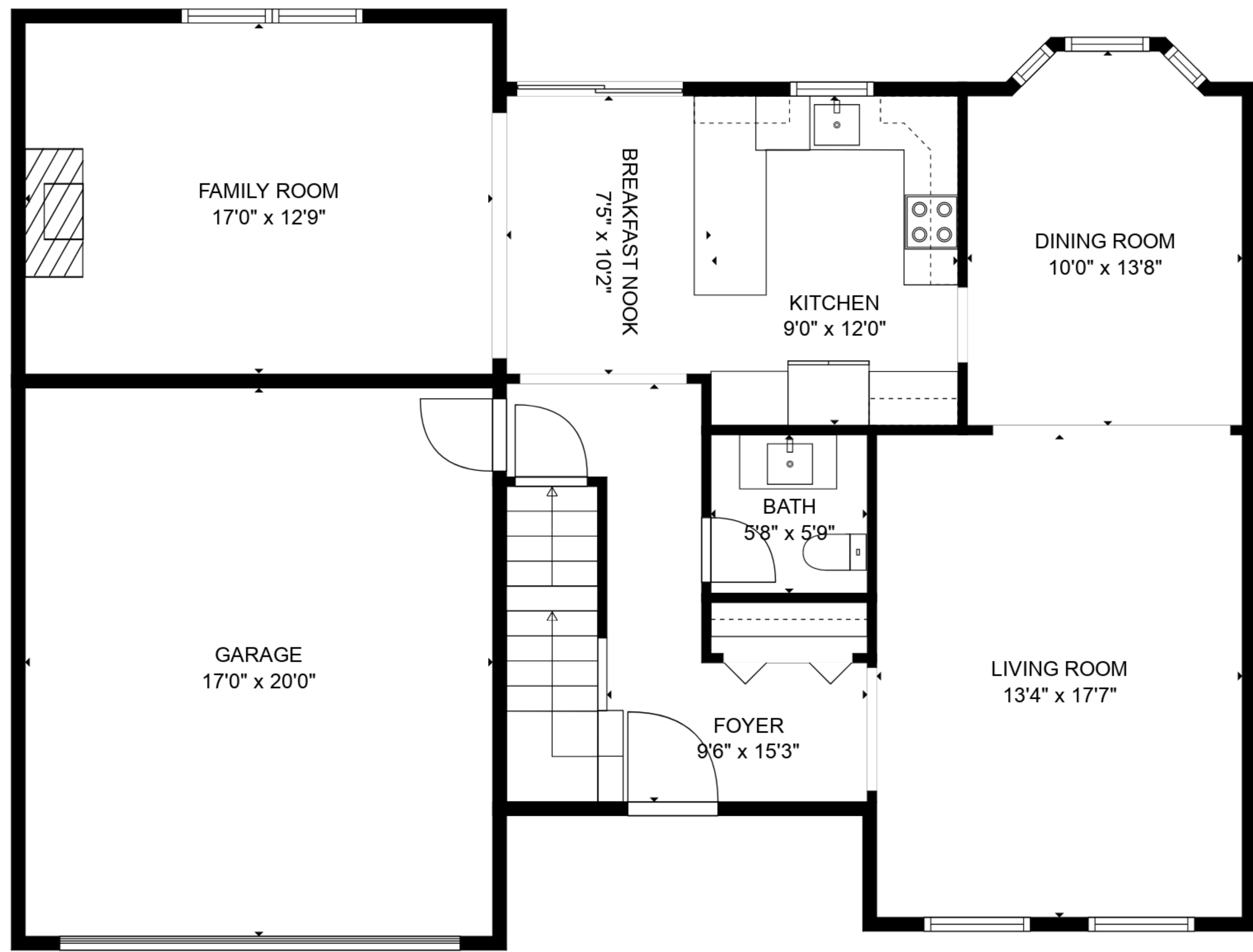




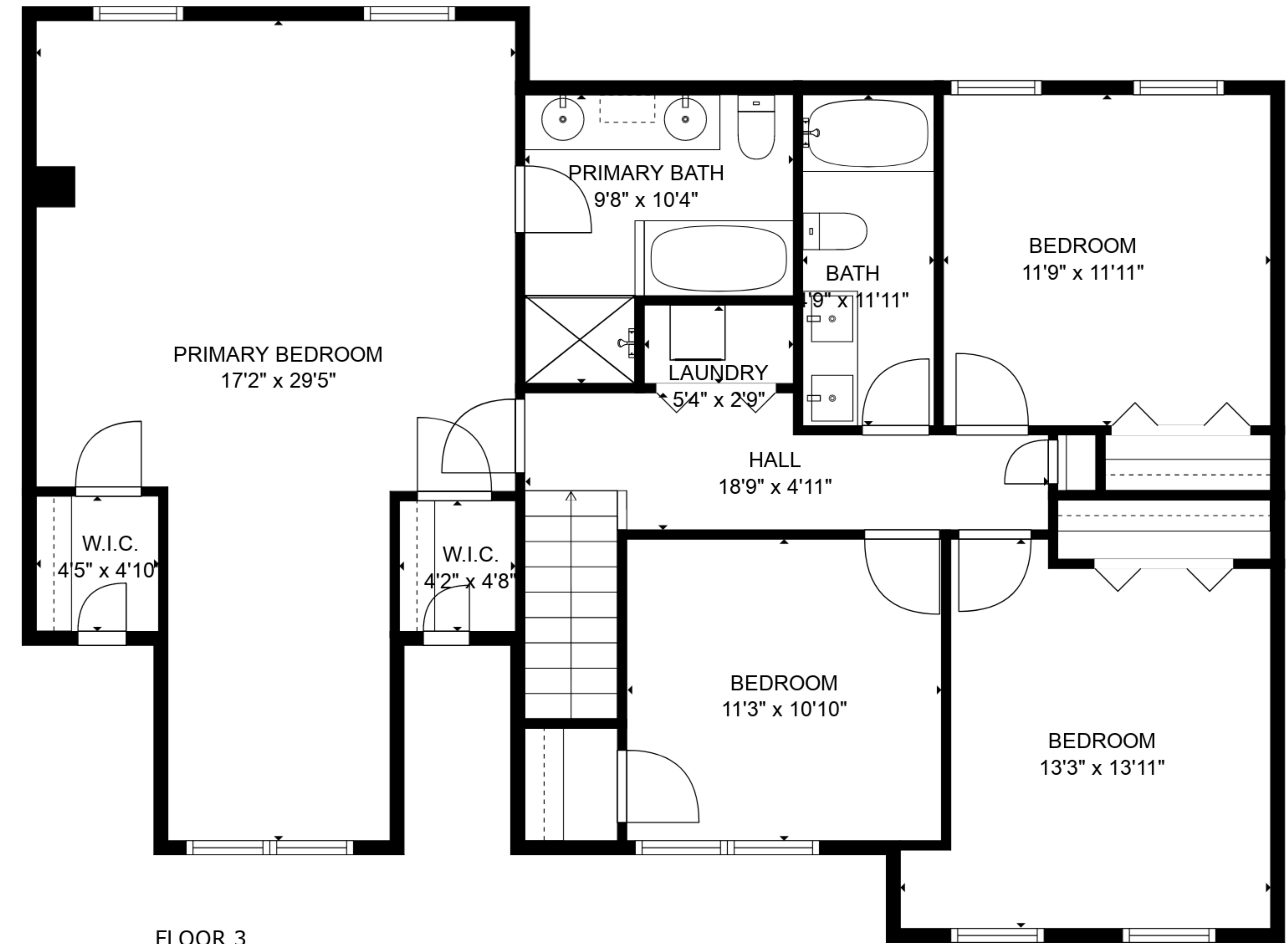
TOTAL: 2709 sq. ft
 BELOW GROUND: 529 sq. ft, FLOOR 2: 977 sq. ft, FLOOR 3: 1203 sq. ft
 EXCLUDED AREAS: BASEMENT: 185 sq. ft, LOW CEILING: 222 sq. ft, GARAGE: 340 sq. ft

Sizes and Dimensions are approximate

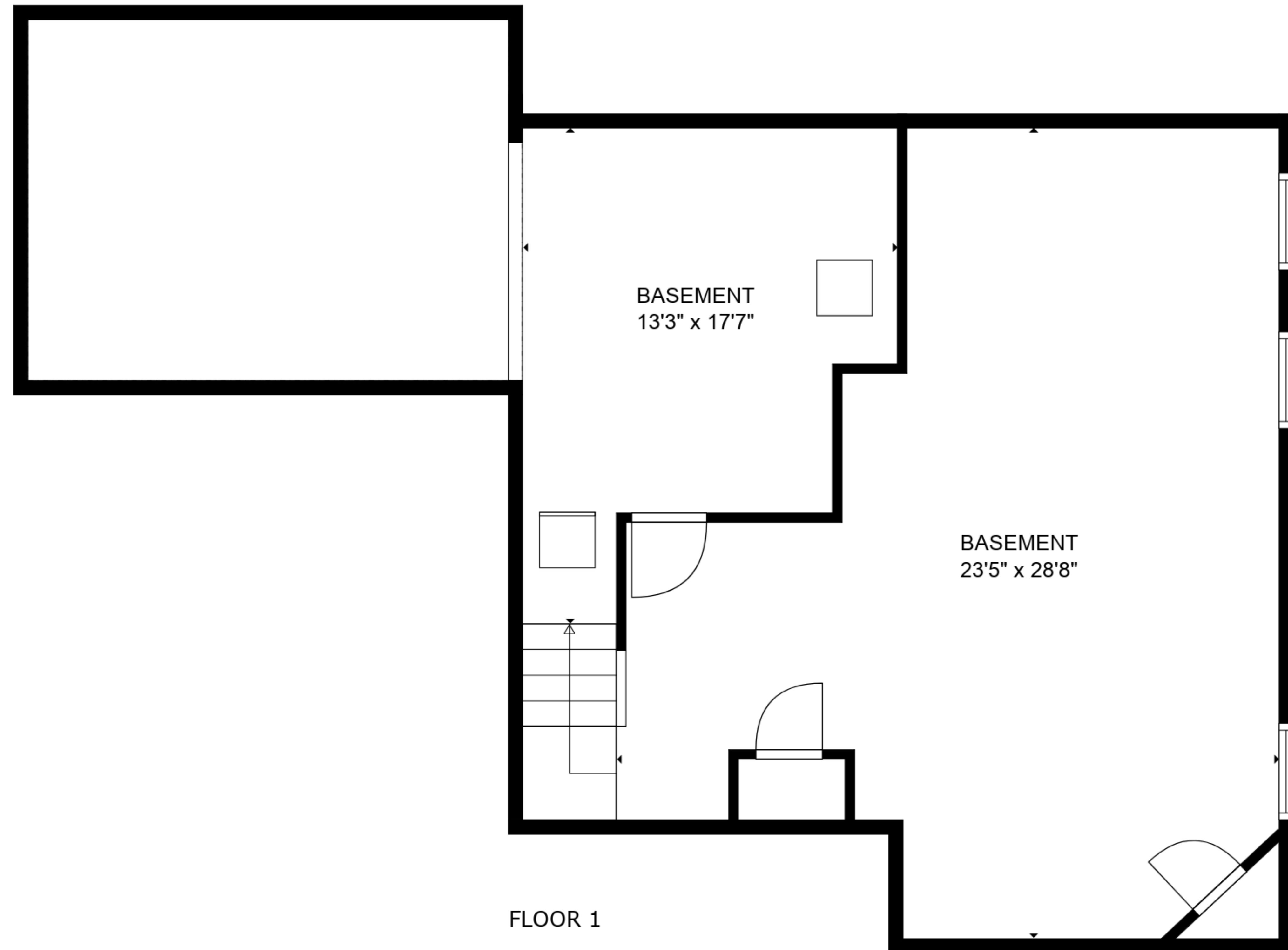




FLOOR 2



FLOOR 3



FLOOR 1

TOTAL: 2709 sq. ft
 BELOW GROUND: 529 sq. ft, FLOOR 2: 977 sq. ft, FLOOR 3: 1203 sq. ft
 EXCLUDED AREAS: BASEMENT: 185 sq. ft, LOW CEILING: 222 sq. ft, GARAGE: 340 sq. ft

Sizes and Dimensions are approximate

