

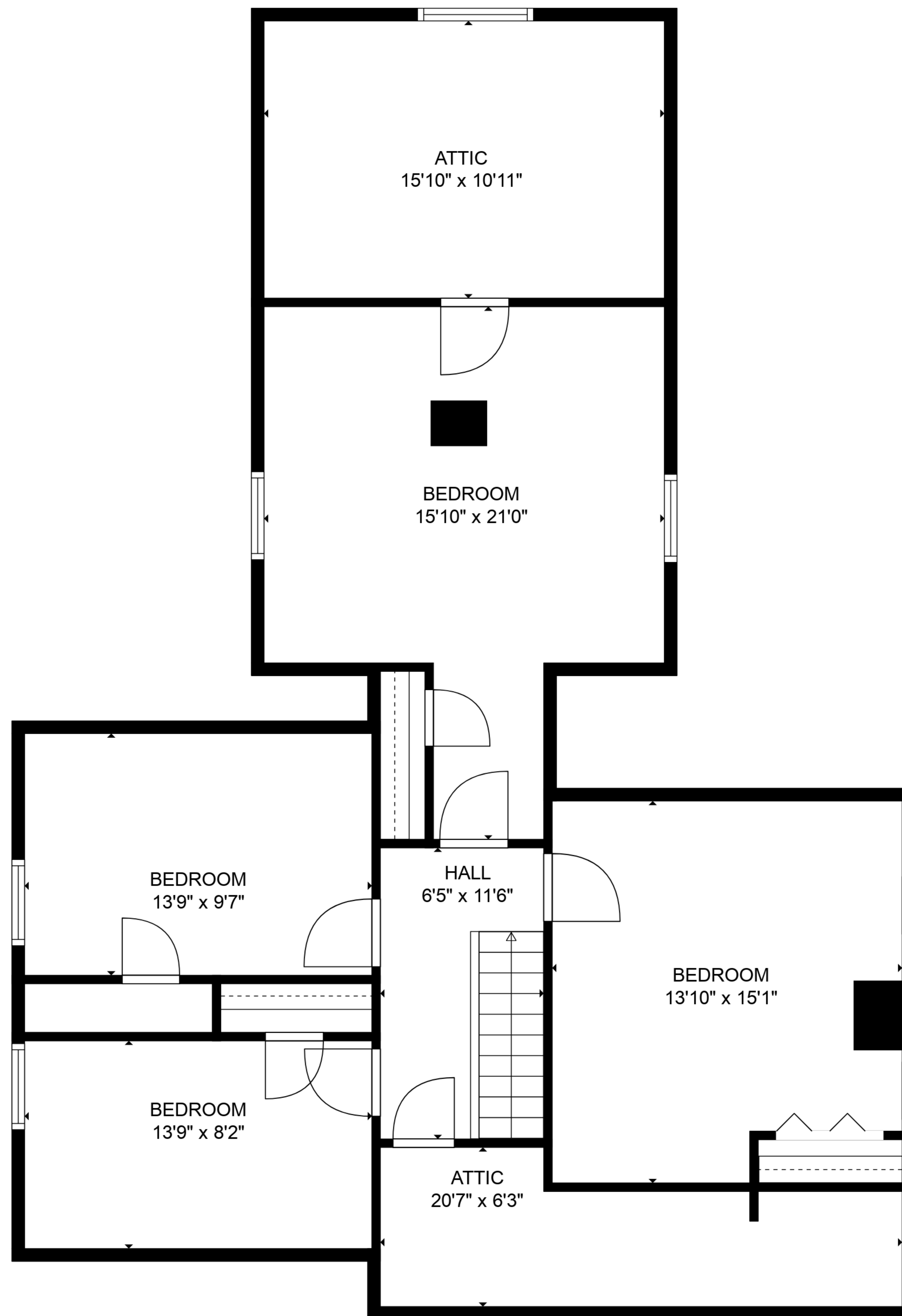
TOTAL: 2311 sq. ft

FLOOR 1: 1616 sq. ft, FLOOR 2: 695 sq. ft

EXCLUDED AREAS: ROOM: 150 sq. ft, STORAGE: 376 sq. ft, LOW CEILING: 352 sq. ft,
ATTIC: 87 sq. ft



Floor Plans are provided by HouseSnappers.com. Measurements are deemed highly reliable but not guaranteed.



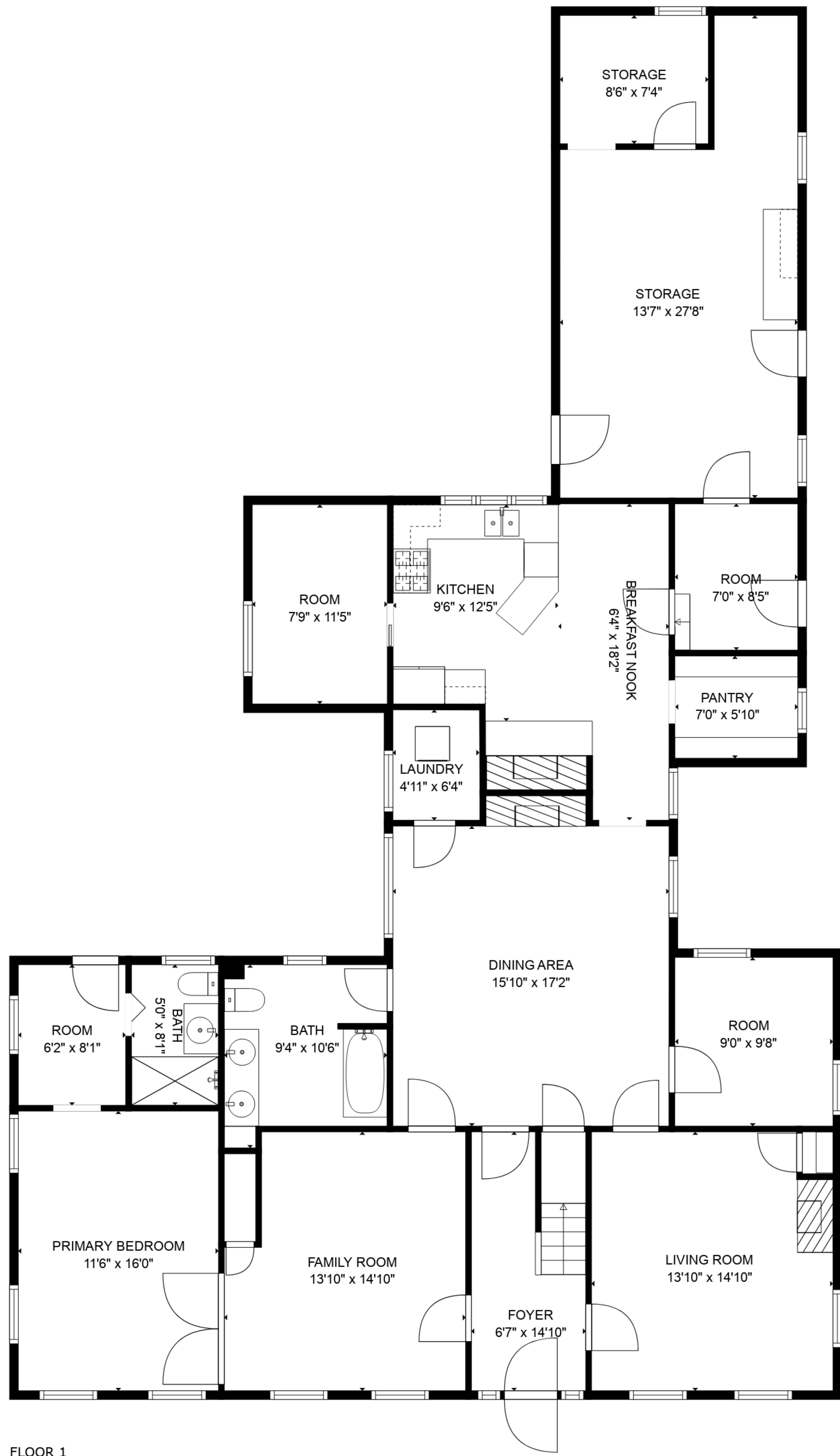
TOTAL: 2311 sq. ft

FLOOR 1: 1616 sq. ft, FLOOR 2: 695 sq. ft

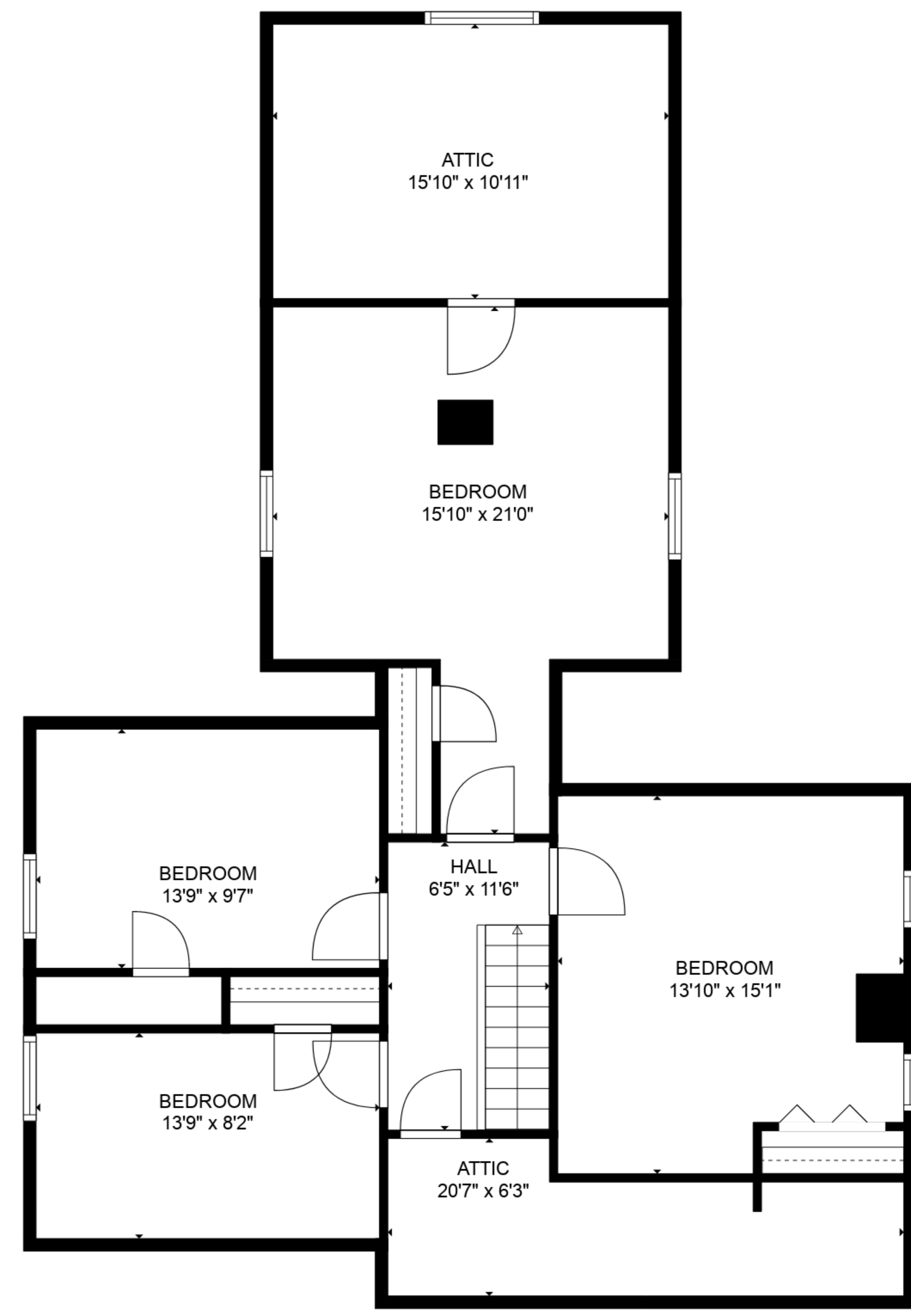
EXCLUDED AREAS: ROOM: 150 sq. ft, STORAGE: 376 sq. ft, LOW CEILING: 352 sq. ft,
ATTIC: 87 sq. ft



Floor Plans are provided by HouseSnappers.com. Measurements are deemed highly reliable but not guaranteed.



FLOOR 1



FLOOR 2

TOTAL: 2311 sq. ft

FLOOR 1: 1616 sq. ft, FLOOR 2: 695 sq. ft

EXCLUDED AREAS: ROOM: 150 sq. ft, STORAGE: 376 sq. ft, LOW CEILING: 352 sq. ft, ATTIC: 87 sq. ft



Floor Plans are provided by HouseSnappers.com. Measurements are deemed highly reliable but not guaranteed.