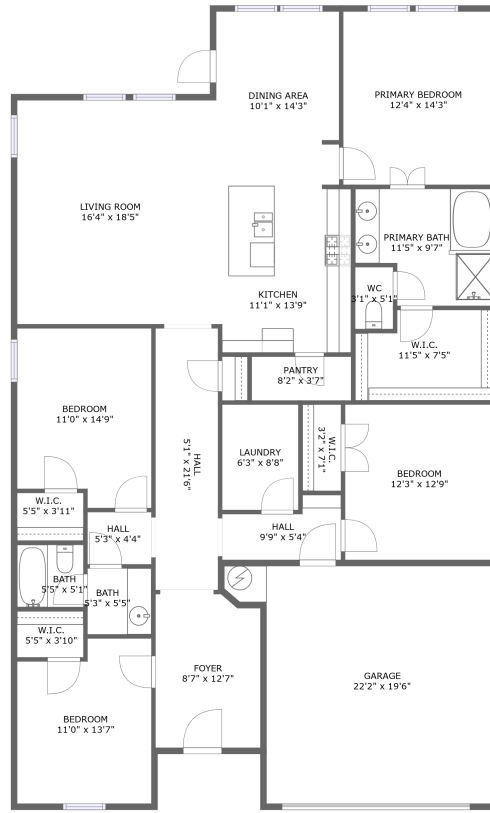


19107 Shoreside Terrace Drive, Manvel, Texas 77578, United States




FLOOR 1

Property Summary

 **1** garages

 **4** bedrooms

 **2** bathrooms

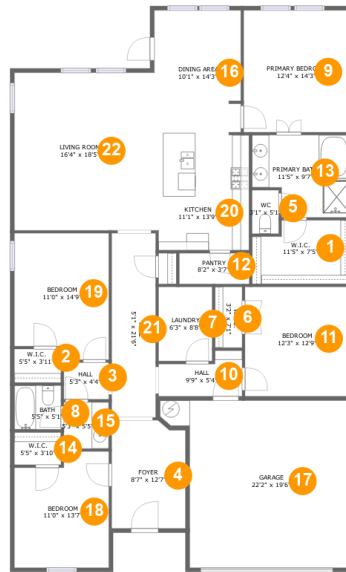
 **0** half baths

 **1** floors

 **2,098** Gross Living Area sqft

 **2,494** total sqft

19107 Shoreside Terrace Drive, Manvel, Texas 77578, United States



Room Dimensions

Floor 1

Total sqft: 2494

Living area: 2098

#	Room name	Dimensions	Area (sqft)	Counted as Living Area
1	W.i.c.	11'5" x 7'5"	78 sq. ft	Yes
2	W.i.c.	5'5" x 3'11"	21 sq. ft	Yes
3	Hall	5'3" x 4'4"	23 sq. ft	Yes
4	Foyer	8'7" x 12'7"	106 sq. ft	Yes
5	Wc	3'1" x 5'1"	16 sq. ft	Yes
6	W.i.c.	3'2" x 7'1"	22 sq. ft	Yes
7	Laundry	6'3" x 8'8"	54 sq. ft	Yes
8	Bath	5'5" x 5'1"	28 sq. ft	Yes
9	Primary Bedroom	12'4" x 14'3"	176 sq. ft	Yes
10	Hall	9'9" x 5'4"	42 sq. ft	Yes
11	Bedroom	12'3" x 12'9"	156 sq. ft	Yes

Scan captured on Tue, 06 Aug 2024 18:29:03 GMT

Information is calculated by CubiCasa technology; deemed highly reliable but not guaranteed.

**19107 Shoreside Terrace Drive, Manvel, Texas
77578, United States**

#	Room name	Dimensions	Area (sqft)	Counted as Living Area
12	Pantry	8'2" x 3'7"	29 sq. ft	Yes
13	Primary Bath	11'5" x 9'7"	97 sq. ft	Yes
14	W.i.c.	5'5" x 3'10"	21 sq. ft	Yes
15	Bath	5'3" x 5'5"	28 sq. ft	Yes
16	Dining Area	10'1" x 14'3"	143 sq. ft	Yes
17	Garage	22'2" x 19'6"	374 sq. ft	No
18	Bedroom	11'0" x 13'7"	139 sq. ft	Yes
19	Bedroom	11'0" x 14'9"	154 sq. ft	Yes
20	Kitchen	11'1" x 13'9"	151 sq. ft	Yes
21	Hall	5'1" x 21'6"	111 sq. ft	Yes
22	Living Room	16'4" x 18'5"	301 sq. ft	Yes

19107 Shoreside Terrace Drive, Manvel, Texas 77578, United States

1 Floor 1 - W.i.c.



Dimensions: 11'5" x 7'5"
Area: 78 sq. ft
Counted as Living Area:
Yes

Heated: Yes
Finished: Yes
Enclosed: Yes
Contiguous:
Yes
Permitted: Yes
Wet Space: No
Addition: No
Conversion: No

2 Floor 1 - W.i.c.



Dimensions: 5'5" x 3'11"
Area: 21 sq. ft
Counted as Living Area:
Yes

Heated: Yes
Finished: Yes
Enclosed: Yes
Contiguous:
Yes
Permitted: Yes
Wet Space: No
Addition: No
Conversion: No

19107 Shoreside Terrace Drive, Manvel, Texas 77578, United States

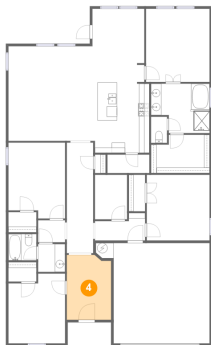
3 Floor 1 - Hall



Dimensions: 5'3" x 4'4"
Area: 23 sq. ft
Counted as Living Area:
Yes

Heated: Yes
Finished: Yes
Enclosed: Yes
Contiguous:
Yes
Permitted: Yes
Wet Space: No
Addition: No
Conversion: No

4 Floor 1 - Foyer



Dimensions: 8'7" x 12'7"
Area: 106 sq. ft
Counted as Living Area:
Yes

Heated: Yes
Finished: Yes
Enclosed: Yes
Contiguous:
Yes
Permitted: Yes
Wet Space: No
Addition: No
Conversion: No

5 Floor 1 - Wc



Dimensions: 3'1" x 5'1"
Area: 16 sq. ft
Counted as Living Area:
Yes

Heated: Yes
Finished: Yes
Enclosed: Yes
Contiguous:
Yes
Permitted: Yes
Wet Space: Yes
Addition: No
Conversion: No

**19107 Shoreside Terrace Drive, Manvel, Texas
77578, United States**

6 Floor 1 - W.i.c.



Dimensions: 3'2" x 7'1"
Area: 22 sq. ft
Counted as Living Area:
Yes

Heated: Yes
Finished: Yes
Enclosed: Yes
Contiguous:
Yes
Permitted: Yes
Wet Space: No
Addition: No
Conversion: No

7 Floor 1 - Laundry



Dimensions: 6'3" x 8'8"
Area: 54 sq. ft
Counted as Living Area:
Yes

Heated: Yes
Finished: Yes
Enclosed: Yes
Contiguous:
Yes
Permitted: Yes
Wet Space: No
Addition: No
Conversion: No

8 Floor 1 - Bath



Dimensions: 5'5" x 5'1"
Area: 28 sq. ft
Counted as Living Area:
Yes

Heated: Yes
Finished: Yes
Enclosed: Yes
Contiguous:
Yes
Permitted: Yes
Wet Space: Yes
Addition: No
Conversion: No

**19107 Shoreside Terrace Drive, Manvel, Texas
77578, United States**

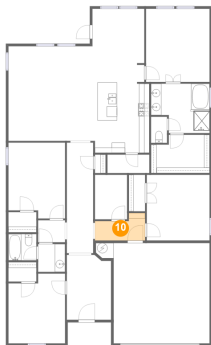
9 Floor 1 - Primary Bedroom



Dimensions: 12'4" x 14'3"
Area: 176 sq. ft
Counted as Living Area:
Yes

Heated: Yes
Finished: Yes
Enclosed: Yes
Contiguous:
Yes
Permitted: Yes
Wet Space: No
Addition: No
Conversion: No

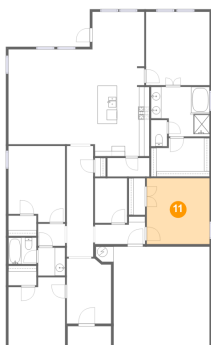
10 Floor 1 - Hall



Dimensions: 9'9" x 5'4"
Area: 42 sq. ft
Counted as Living Area:
Yes

Heated: Yes
Finished: Yes
Enclosed: Yes
Contiguous:
Yes
Permitted: Yes
Wet Space: No
Addition: No
Conversion: No

11 Floor 1 - Bedroom



Dimensions: 12'3" x 12'9"
Area: 156 sq. ft
Counted as Living Area:
Yes

Heated: Yes
Finished: Yes
Enclosed: Yes
Contiguous:
Yes
Permitted: Yes
Wet Space: No
Addition: No
Conversion: No

19107 Shoreside Terrace Drive, Manvel, Texas 77578, United States

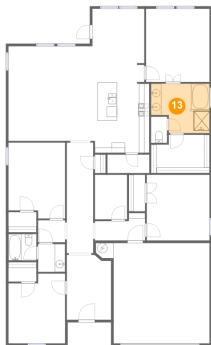
12 Floor 1 - Pantry



Dimensions: 8'2" x 3'7"
Area: 29 sq. ft
Counted as Living Area:
Yes

Heated: Yes
Finished: Yes
Enclosed: Yes
Contiguous:
Yes
Permitted: Yes
Wet Space: No
Addition: No
Conversion: No

13 Floor 1 - Primary Bath



Dimensions: 11'5" x 9'7"
Area: 97 sq. ft
Counted as Living Area:
Yes

Heated: Yes
Finished: Yes
Enclosed: Yes
Contiguous:
Yes
Permitted: Yes
Wet Space: Yes
Addition: No
Conversion: No

14 Floor 1 - W.i.c.



Dimensions: 5'5" x 3'10"
Area: 21 sq. ft
Counted as Living Area:
Yes

Heated: Yes
Finished: Yes
Enclosed: Yes
Contiguous:
Yes
Permitted: Yes
Wet Space: No
Addition: No
Conversion: No

19107 Shoreside Terrace Drive, Manvel, Texas 77578, United States

15 Floor 1 - Bath



Dimensions: 5'3" x 5'5"
Area: 28 sq. ft
Counted as Living Area:
Yes

Heated: Yes
Finished: Yes
Enclosed: Yes
Contiguous:
Yes
Permitted: Yes
Wet Space: Yes
Addition: No
Conversion: No

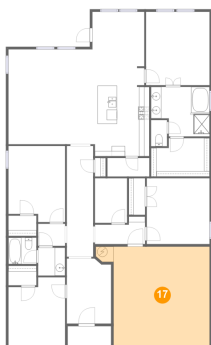
16 Floor 1 - Dining Area



Dimensions: 10'1" x 14'3"
Area: 143 sq. ft
Counted as Living Area:
Yes

Heated: Yes
Finished: Yes
Enclosed: Yes
Contiguous:
Yes
Permitted: Yes
Wet Space: No
Addition: No
Conversion: No

17 Floor 1 - Garage



Dimensions: 22'2" x 19'6"
Area: 374 sq. ft
Counted as Living Area: No

Heated: No
Finished: No
Enclosed: Yes
Contiguous: Yes
Permitted: Yes
Wet Space: No
Addition: No
Conversion: No

19107 Shoreside Terrace Drive, Manvel, Texas 77578, United States

18 Floor 1 - Bedroom



Dimensions: 11'0" x 13'7"
Area: 139 sq. ft
Counted as Living Area:
Yes

Heated: Yes
Finished: Yes
Enclosed: Yes
Contiguous:
Yes
Permitted: Yes
Wet Space: No
Addition: No
Conversion: No

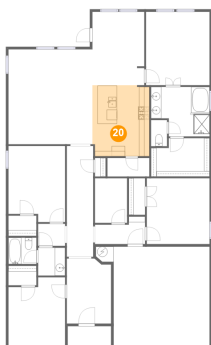
19 Floor 1 - Bedroom



Dimensions: 11'0" x 14'9"
Area: 154 sq. ft
Counted as Living Area:
Yes

Heated: Yes
Finished: Yes
Enclosed: Yes
Contiguous:
Yes
Permitted: Yes
Wet Space: No
Addition: No
Conversion: No

20 Floor 1 - Kitchen

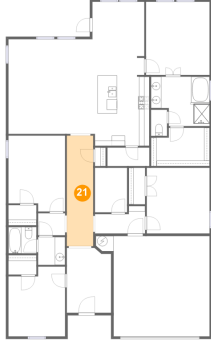


Dimensions: 11'1" x 13'9"
Area: 151 sq. ft
Counted as Living Area:
Yes

Heated: Yes
Finished: Yes
Enclosed: Yes
Contiguous:
Yes
Permitted: Yes
Wet Space: No
Addition: No
Conversion: No

**19107 Shoreside Terrace Drive, Manvel, Texas
77578, United States**

21 Floor 1 - Hall



Dimensions: 5'1" x 21'6"
Area: 111 sq. ft
Counted as Living Area:
Yes

Heated: Yes
Finished: Yes
Enclosed: Yes
Contiguous:
Yes
Permitted: Yes
Wet Space: No
Addition: No
Conversion: No

22 Floor 1 - Living Room



Dimensions: 16'4" x 18'5"
Area: 301 sq. ft
Counted as Living Area:
Yes

Heated: Yes
Finished: Yes
Enclosed: Yes
Contiguous:
Yes
Permitted: Yes
Wet Space: No
Addition: No
Conversion: No