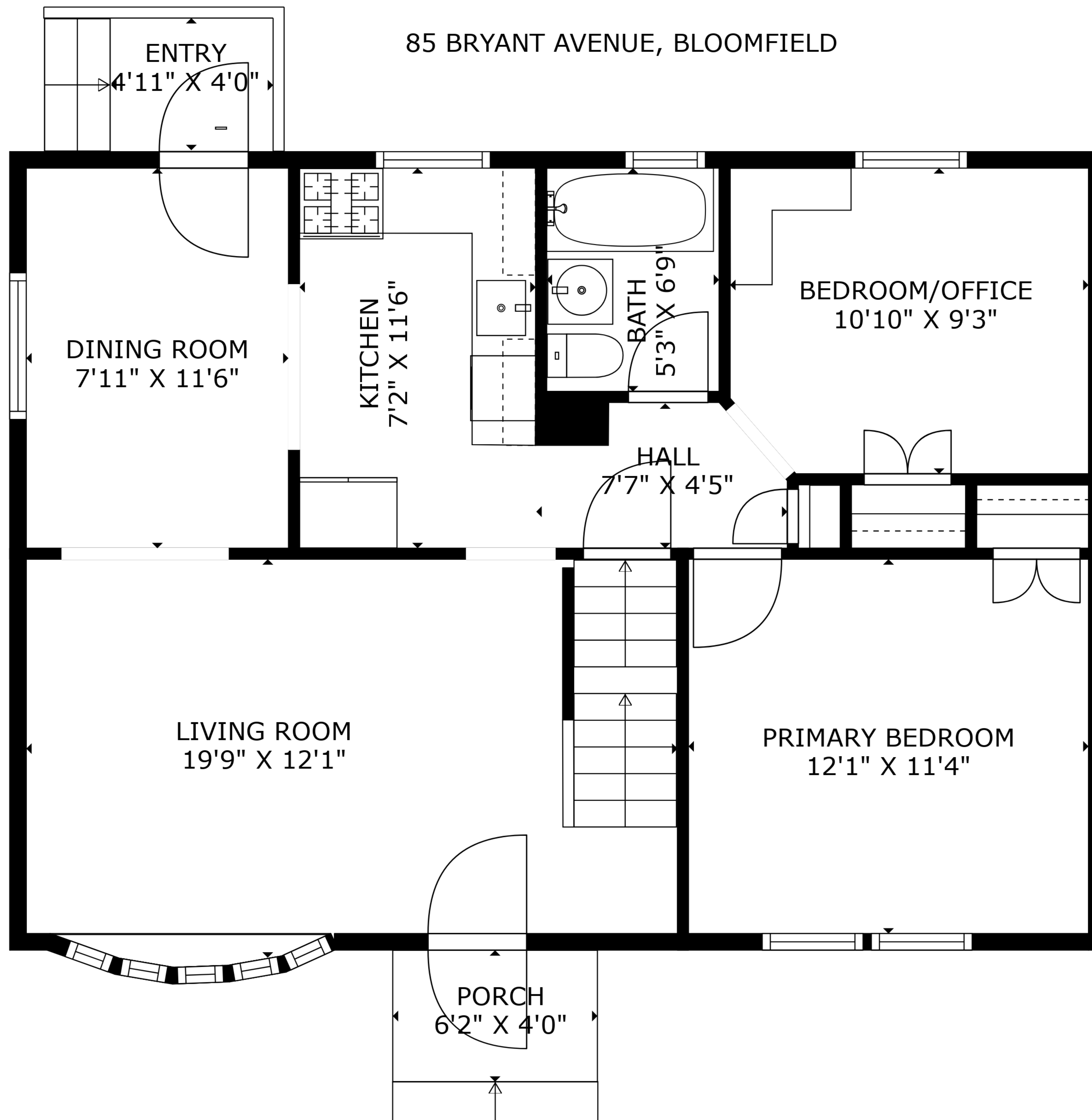


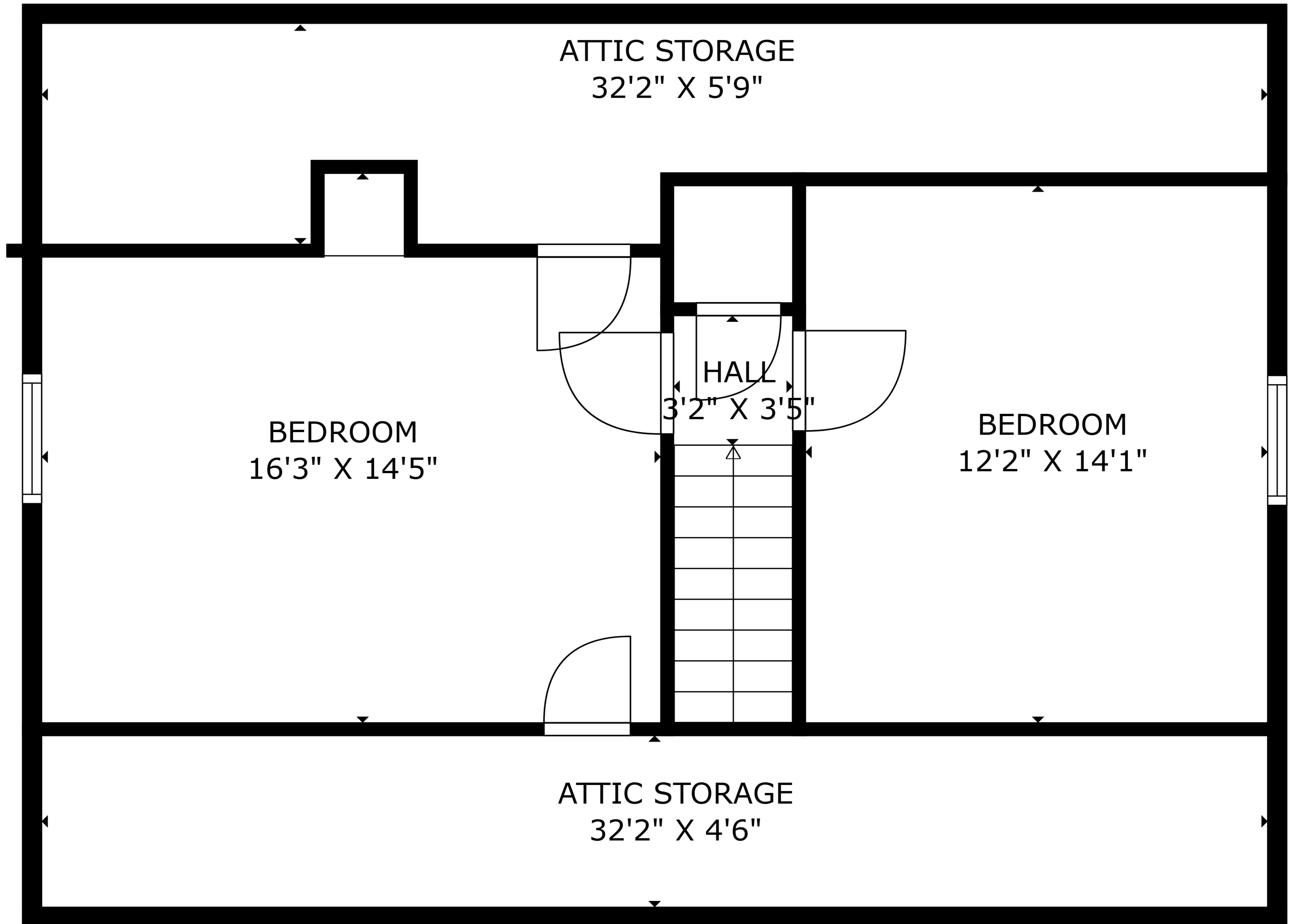
**TOTAL: 1631 sq. ft**  
 BELOW GROUND: 478 sq. ft, FIRST FLOOR: 774 sq. ft, SECOND FLOOR: 379 sq. ft  
 EXCLUDED AREAS: UTILITY/LAUNDRY: 221 sq. ft, PORCH: 25 sq. ft, ATTIC STORAGE: 311 sq. ft,  
 LOW CEILING: 58 sq. ft

85 BRYANT AVENUE, BLOOMFIELD

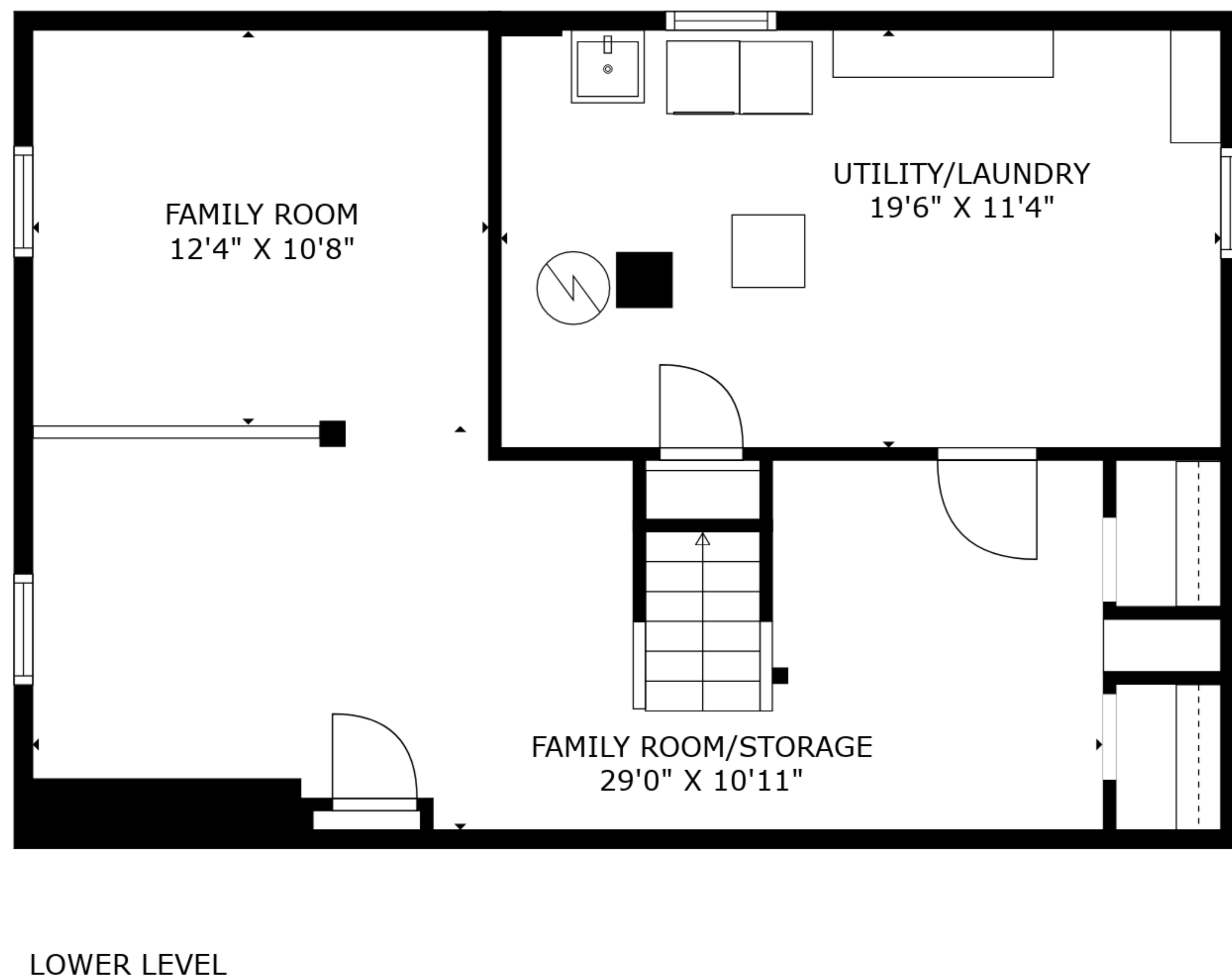
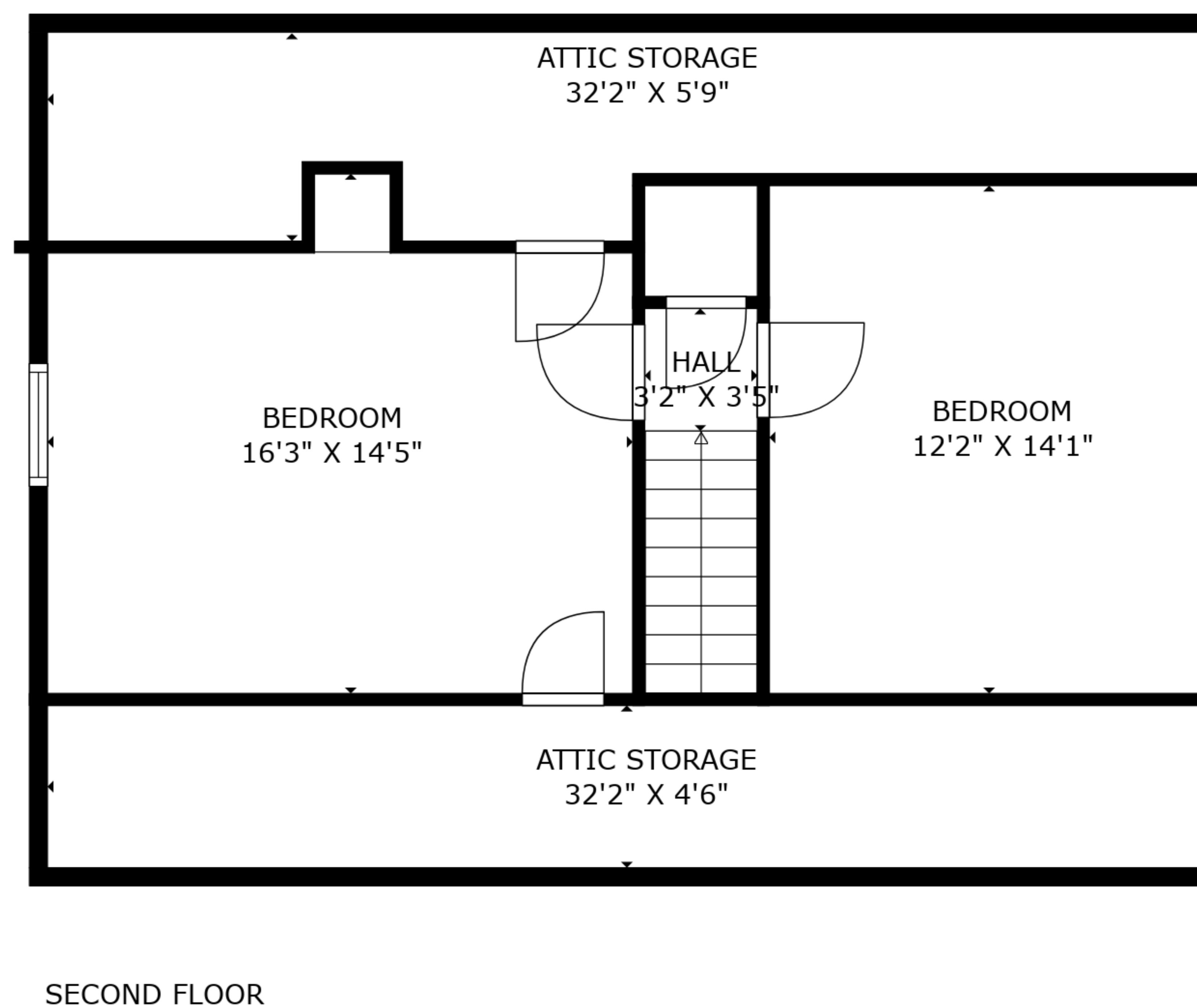
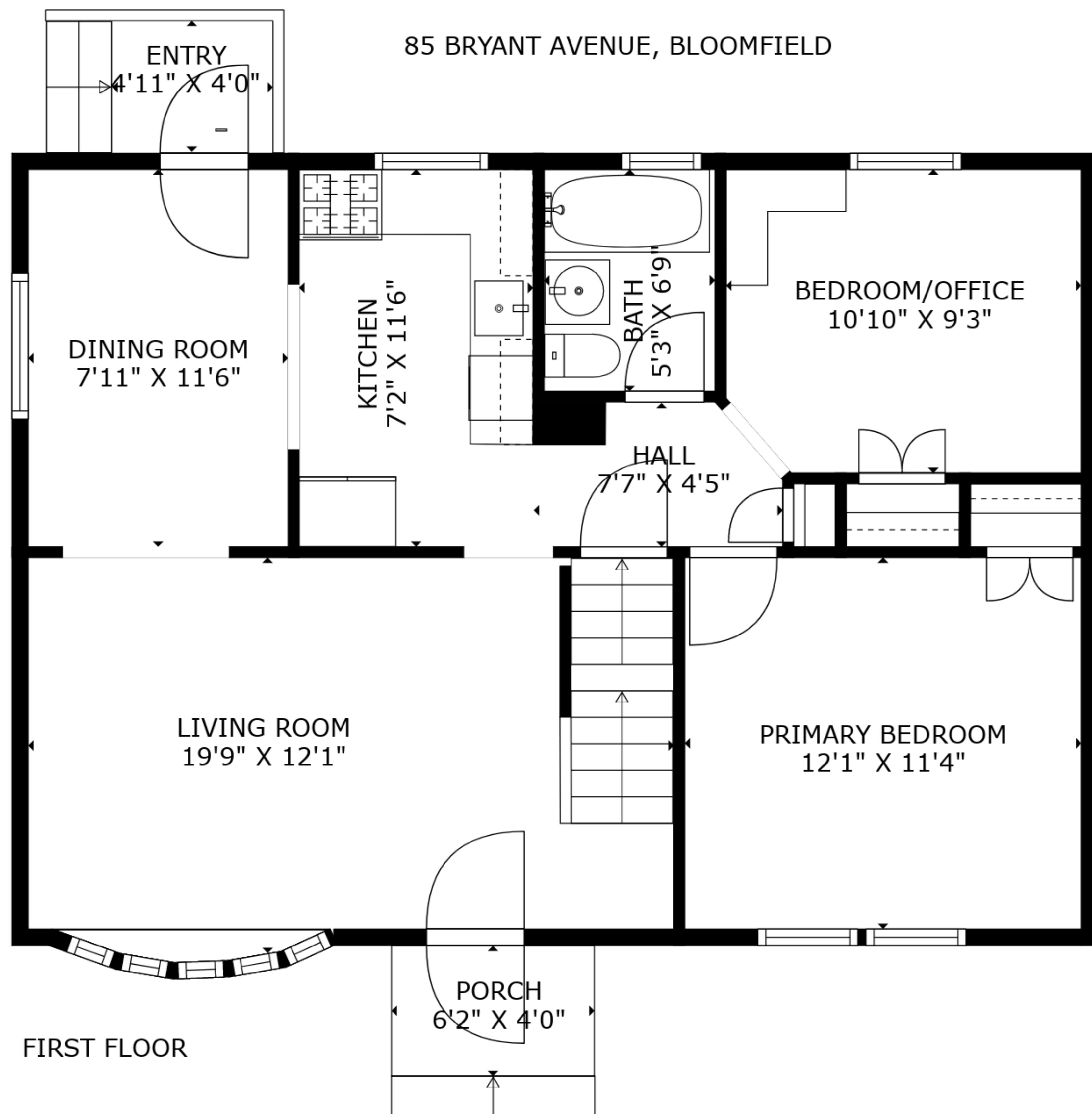


**TOTAL: 1631 sq. ft**

BELOW GROUND: 478 sq. ft, FIRST FLOOR: 774 sq. ft, SECOND FLOOR: 379 sq. ft  
EXCLUDED AREAS: UTILITY/LAUNDRY: 221 sq. ft, PORCH: 25 sq. ft, ATTIC STORAGE: 311 sq. ft,  
LOW CEILING: 58 sq. ft



**TOTAL: 1631 sq. ft**  
BELOW GROUND: 478 sq. ft, FIRST FLOOR: 774 sq. ft, SECOND FLOOR: 379 sq. ft  
EXCLUDED AREAS: UTILITY/LAUNDRY: 221 sq. ft, PORCH: 25 sq. ft, ATTIC STORAGE: 311 sq. ft,  
LOW CEILING: 58 sq. ft



**TOTAL: 1631 sq. ft**  
 BELOW GROUND: 478 sq. ft, FIRST FLOOR: 774 sq. ft, SECOND FLOOR: 379 sq. ft  
 EXCLUDED AREAS: UTILITY/LAUNDRY: 221 sq. ft, PORCH: 25 sq. ft, ATTIC STORAGE: 311 sq. ft,  
 LOW CEILING: 58 sq. ft