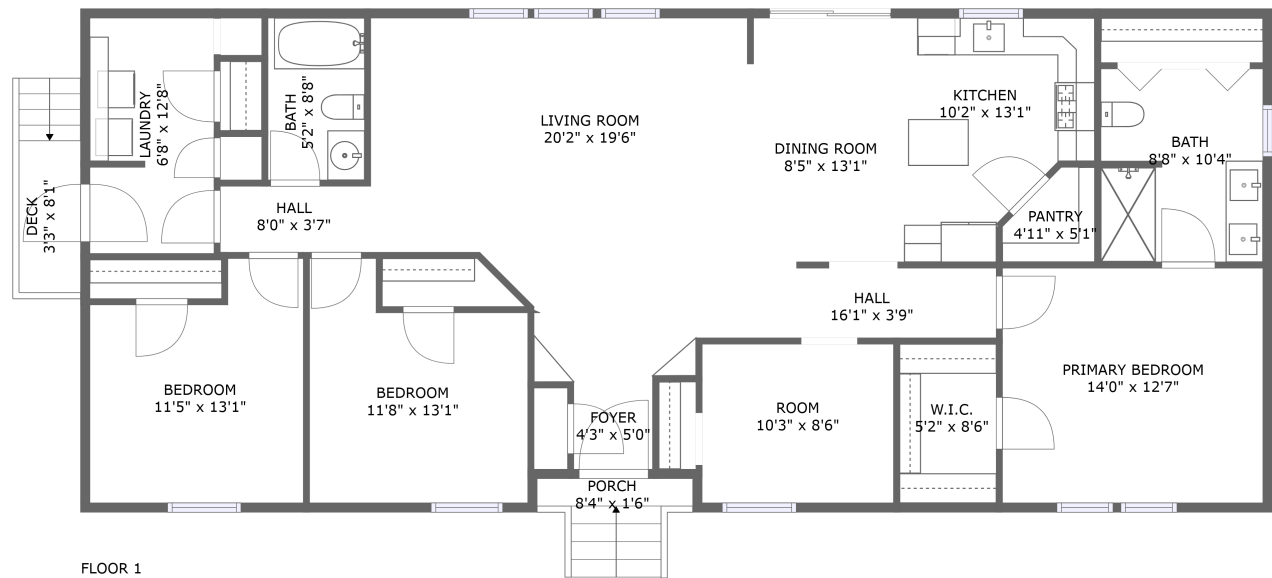




Home report


46 Dead End Lane, Martinsburg, Berkeley County, West Virginia,
United States, 25403





Property summary


 **0** Garages


 **3** Bedrooms

 **2** Bathrooms

 **0** Half baths

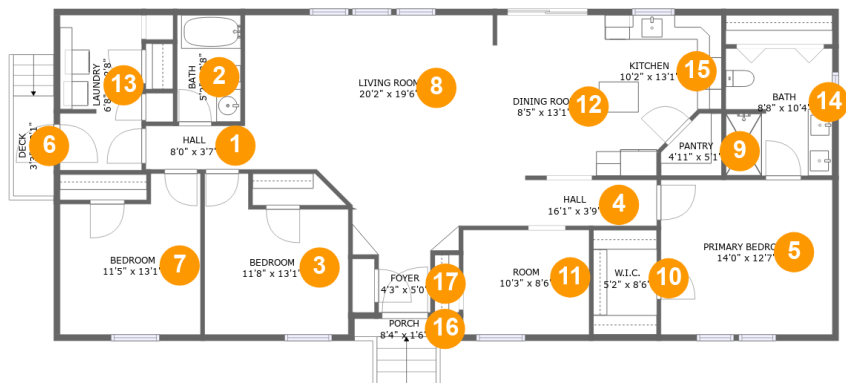
 **1** Floors

 **1,496** Gross living area sqft

 **1,632** Total sqft

Home report

46 Dead End Lane, Martinsburg, Berkeley County, West Virginia,
United States, 25403



Room dimensions

Floor 1 Total sqft: 1632 Living area: 1496

#		Dimensions	sqft	Counted as living area
1	Hall	8'0" x 3'7"	29 sq. ft	Yes
2	Bath	5'2" x 8'8"	45 sq. ft	Yes
3	Bedroom	11'8" x 13'1"	130 sq. ft	Yes
4	Hall	16'1" x 3'9"	60 sq. ft	Yes
5	Primary Bedroom	14'0" x 12'7"	161 sq. ft	Yes
6	Deck	3'3" x 8'1"	27 sq. ft	No
7	Bedroom	11'5" x 13'1"	132 sq. ft	Yes
8	Living Room	20'2" x 19'6"	292 sq. ft	Yes
9	Pantry	4'11" x 5'1"	20 sq. ft	Yes
10	W.I.C.	5'2" x 8'6"	38 sq. ft	Yes
11	Room	10'3" x 8'6"	76 sq. ft	Yes

Home report

**46 Dead End Lane, Martinsburg, Berkeley County, West Virginia,
United States, 25403**

#		Dimensions	sqft	Counted as living area
12	Dining Room	8'5" x 13'1"	102 sq. ft	Yes
13	Laundry	6'8" x 12'8"	83 sq. ft	Yes
14	Bath	8'8" x 10'4"	89 sq. ft	Yes
15	Kitchen	10'2" x 13'1"	99 sq. ft	Yes
16	Porch	8'4" x 1'6"	12 sq. ft	No
17	Foyer	4'3" x 5'0"	21 sq. ft	Yes

1 Floor 1 - Hall



Dimensions: 8'0" x 3'7"
Area: 29 sq. ft
Counted as living area: Yes

Heated: Yes
Finished: Yes
Enclosed: Yes
Contiguous: Yes
Permitted: Yes
Wet space: No
Addition: No
Conversion: No

2 Floor 1 - Bath



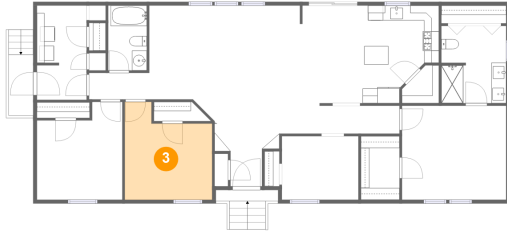
Dimensions: 5'2" x 8'8"
Area: 45 sq. ft
Counted as living area: Yes

Heated: Yes
Finished: Yes
Enclosed: Yes
Contiguous: Yes
Permitted: Yes
Wet space: Yes
Addition: No
Conversion: No

Home report

46 Dead End Lane, Martinsburg, Berkeley County, West Virginia,
United States, 25403

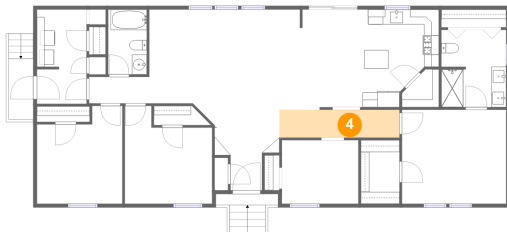
3 Floor 1 - Bedroom



Dimensions: 11'8" x 13'1"
Area: 130 sq. ft
Counted as living area: Yes

Heated: Yes
Finished: Yes
Enclosed: Yes
Contiguous: Yes
Permitted: Yes
Wet space: No
Addition: No
Conversion: No

4 Floor 1 - Hall



Dimensions: 16'1" x 3'9"
Area: 60 sq. ft
Counted as living area: Yes

Heated: Yes
Finished: Yes
Enclosed: Yes
Contiguous: Yes
Permitted: Yes
Wet space: No
Addition: No
Conversion: No

5 Floor 1 - Primary Bedroom



Dimensions: 14'0" x 12'7"
Area: 161 sq. ft
Counted as living area: Yes

Heated: Yes
Finished: Yes
Enclosed: Yes
Contiguous: Yes
Permitted: Yes
Wet space: No
Addition: No
Conversion: No

46 Dead End Lane, Martinsburg, Berkeley County, West Virginia,
United States, 25403

6 Floor 1 - Deck



Dimensions: 3'3" x 8'1"
Area: 27 sq. ft
Counted as living area: No

Heated: No
Finished: Yes
Enclosed: No
Contiguous: Yes
Permitted: Yes
Wet space: No
Addition: No
Conversion: No

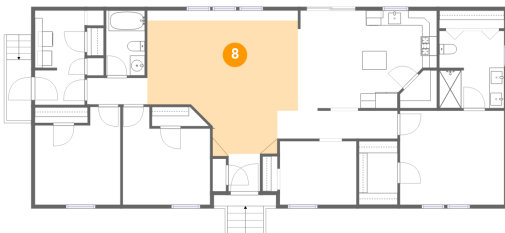
7 Floor 1 - Bedroom



Dimensions: 11'5" x 13'1"
Area: 132 sq. ft
Counted as living area: Yes

Heated: Yes
Finished: Yes
Enclosed: Yes
Contiguous: Yes
Permitted: Yes
Wet space: No
Addition: No
Conversion: No

8 Floor 1 - Living Room



Dimensions: 20'2" x 19'6"
Area: 292 sq. ft
Counted as living area: Yes

Heated: Yes
Finished: Yes
Enclosed: Yes
Contiguous: Yes
Permitted: Yes
Wet space: No
Addition: No
Conversion: No

46 Dead End Lane, Martinsburg, Berkeley County, West Virginia,
United States, 25403

9 Floor 1 - Pantry



Dimensions: 4'11" x 5'1"
Area: 20 sq. ft
Counted as living area: Yes

Heated: Yes
Finished: Yes
Enclosed: Yes
Contiguous: Yes
Permitted: Yes
Wet space: No
Addition: No
Conversion: No

10 Floor 1 - W.I.C.



Dimensions: 5'2" x 8'6"
Area: 38 sq. ft
Counted as living area: Yes

Heated: Yes
Finished: Yes
Enclosed: Yes
Contiguous: Yes
Permitted: Yes
Wet space: No
Addition: No
Conversion: No

11 Floor 1 - Room

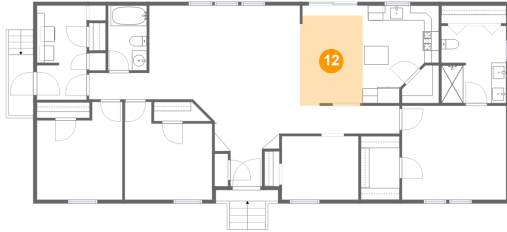


Dimensions: 10'3" x 8'6"
Area: 76 sq. ft
Counted as living area: Yes

Heated: Yes
Finished: Yes
Enclosed: Yes
Contiguous: Yes
Permitted: Yes
Wet space: No
Addition: No
Conversion: No

46 Dead End Lane, Martinsburg, Berkeley County, West Virginia,
United States, 25403

12 Floor 1 - Dining Room



Dimensions: 8'5" x 13'1"
Area: 102 sq. ft
Counted as living area: Yes

Heated: Yes
Finished: Yes
Enclosed: Yes
Contiguous: Yes
Permitted: Yes
Wet space: No
Addition: No
Conversion: No

13 Floor 1 - Laundry



Dimensions: 6'8" x 12'8"
Area: 83 sq. ft
Counted as living area: Yes

Heated: Yes
Finished: Yes
Enclosed: Yes
Contiguous: Yes
Permitted: Yes
Wet space: No
Addition: No
Conversion: No

14 Floor 1 - Bath



Dimensions: 8'8" x 10'4"
Area: 89 sq. ft
Counted as living area: Yes

Heated: Yes
Finished: Yes
Enclosed: Yes
Contiguous: Yes
Permitted: Yes
Wet space: Yes
Addition: No
Conversion: No

46 Dead End Lane, Martinsburg, Berkeley County, West Virginia,
United States, 25403

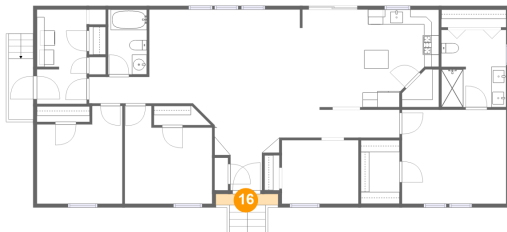
15 Floor 1 - Kitchen



Dimensions: 10'2" x 13'1"
Area: 99 sq. ft
Counted as living area: Yes

Heated: Yes
Finished: Yes
Enclosed: Yes
Contiguous: Yes
Permitted: Yes
Wet space: No
Addition: No
Conversion: No

16 Floor 1 - Porch



Dimensions: 8'4" x 1'6"
Area: 12 sq. ft
Counted as living area: No

Heated: No
Finished: Yes
Enclosed: No
Contiguous: Yes
Permitted: Yes
Wet space: No
Addition: No
Conversion: No

17 Floor 1 - Foyer



Dimensions: 4'3" x 5'0"
Area: 21 sq. ft
Counted as living area: Yes

Heated: Yes
Finished: Yes
Enclosed: Yes
Contiguous: Yes
Permitted: Yes
Wet space: No
Addition: No
Conversion: No