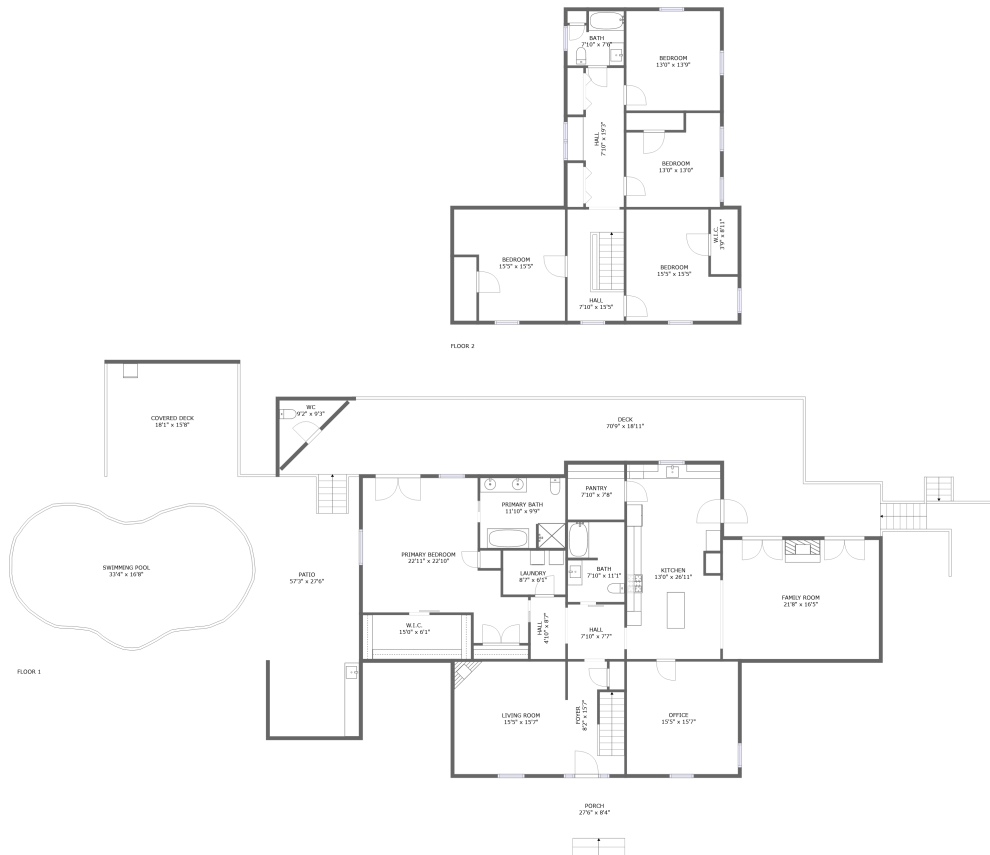


1150 Drewrys Hill Road, Stewartsville, Vinton, Bedford County, Virginia, United States, 24179



Property Summary

0 garages **5** bedrooms **3** bathrooms **0** half baths

2 floors **3,542** Gross Living Area sqft **6,161** total sqft

1150 Drewrys Hill Road, Stewartsville, Vinton, Bedford County, Virginia, United States, 24179



Room Dimensions

Floor 1

Total sqft: 4891

Living area: 2392

#	Room name	Dimensions	Area (sqft)	Counted as Living Area
1	Bath	7'10" x 11'1"	85 sq. ft	Yes
2	Foyer	8'2" x 15'7"	114 sq. ft	Yes
3	Hall	4'10" x 8'7"	41 sq. ft	Yes
4	Laundry	8'7" x 6'1"	53 sq. ft	Yes
5	Kitchen	13'0" x 26'11"	341 sq. ft	Yes
6	W.i.c.	15'0" x 6'1"	92 sq. ft	Yes
7	Deck	70'9" x 18'11"	936 sq. ft	No
8	Patio	57'3" x 27'6"	1490 sq. ft	No
9	Primary Bedroom	22'11" x 22'10"	356 sq. ft	Yes
10	Family Room	21'8" x 16'5"	357 sq. ft	Yes
11	Living Room	15'5" x 15'7"	240 sq. ft	Yes

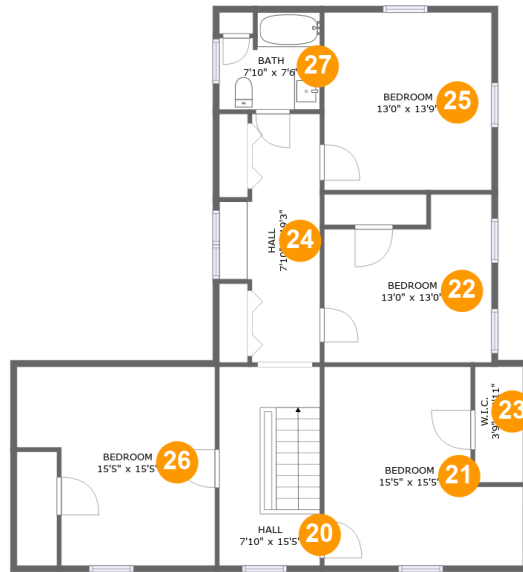
Scan captured on Fri, 06 Sep 2024 19:25:21 GMT

Information is calculated by CubiCasa technology; deemed highly reliable but not guaranteed.

**1150 Drewrys Hill Road, Stewartsville, Vinton,
Bedford County, Virginia, United States, 24179**

#	Room name	Dimensions	Area (sqft)	Counted as Living Area
12	Porch	27'6" x 8'4"	230 sq. ft	No
13	Wc	9'2" x 9'3"	44 sq. ft	No
14	Primary Bath	11'10" x 9'9"	114 sq. ft	Yes
15	Swimming Pool	33'4" x 16'8"	501 sq. ft	No
16	Office	15'5" x 15'7"	240 sq. ft	Yes
17	Hall	7'10" x 7'7"	59 sq. ft	Yes
18	Pantry	7'10" x 7'8"	60 sq. ft	Yes
19	Covered Deck	18'1" x 15'8"	283 sq. ft	No

1150 Drewrys Hill Road, Stewartsville, Vinton, Bedford County, Virginia, United States, 24179



Room Dimensions

Floor 2

Total sqft: 1270

Living area: 1150

#	Room name	Dimensions	Area (sqft)	Counted as Living Area
20	Hall	7'10" x 15'5"	121 sq. ft	Yes
21	Bedroom	15'5" x 15'5"	200 sq. ft	Yes
22	Bedroom	13'0" x 13'0"	147 sq. ft	Yes
23	W.i.c.	3'9" x 8'11"	33 sq. ft	Yes
24	Hall	7'10" x 19'3"	117 sq. ft	No
25	Bedroom	13'0" x 13'9"	179 sq. ft	Yes
26	Bedroom	15'5" x 15'5"	206 sq. ft	Yes
27	Bath	7'10" x 7'6"	53 sq. ft	Yes

1150 Drewrys Hill Road, Stewartsville, Vinton, Bedford County, Virginia, United States, 24179

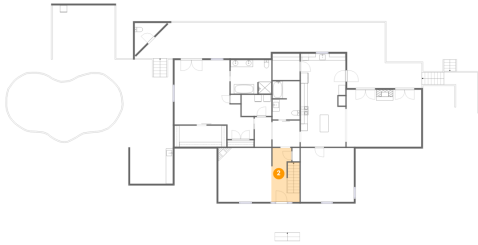
1 Floor 1 - Bath



Dimensions: 7'10" x 11'1"
Area: 85 sq. ft
Counted as Living Area:
Yes

Heated: Yes
Finished: Yes
Enclosed: Yes
Contiguous:
Yes
Permitted: Yes
Wet Space: Yes
Addition: No
Conversion: No

2 Floor 1 - Foyer



Dimensions: 8'2" x 15'7"
Area: 114 sq. ft
Counted as Living Area:
Yes

Heated: Yes
Finished: Yes
Enclosed: Yes
Contiguous:
Yes
Permitted: Yes
Wet Space: No
Addition: No
Conversion: No

1150 Drewrys Hill Road, Stewartsville, Vinton, Bedford County, Virginia, United States, 24179

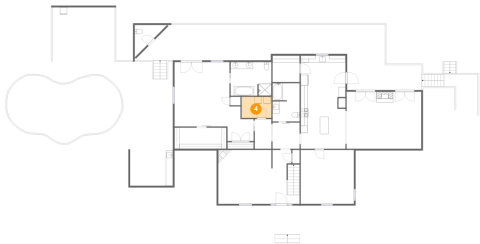
3 Floor 1 - Hall



Dimensions: 4'10" x 8'7"
Area: 41 sq. ft
Counted as Living Area:
Yes

Heated: Yes
Finished: Yes
Enclosed: Yes
Contiguous:
Yes
Permitted: Yes
Wet Space: No
Addition: No
Conversion: No

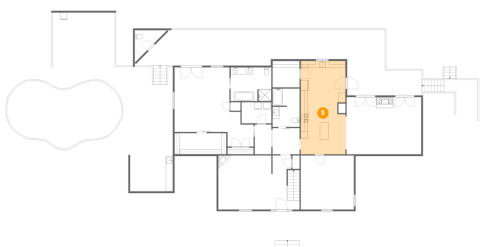
4 Floor 1 - Laundry



Dimensions: 8'7" x 6'1"
Area: 53 sq. ft
Counted as Living Area:
Yes

Heated: Yes
Finished: Yes
Enclosed: Yes
Contiguous:
Yes
Permitted: Yes
Wet Space: No
Addition: No
Conversion: No

5 Floor 1 - Kitchen

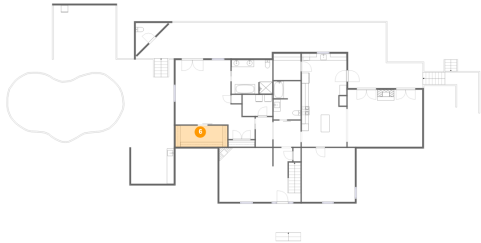


Dimensions: 13'0" x 26'11"
Area: 341 sq. ft
Counted as Living Area:
Yes

Heated: Yes
Finished: Yes
Enclosed: Yes
Contiguous:
Yes
Permitted: Yes
Wet Space: No
Addition: No
Conversion: No

1150 Drewrys Hill Road, Stewartsville, Vinton, Bedford County, Virginia, United States, 24179

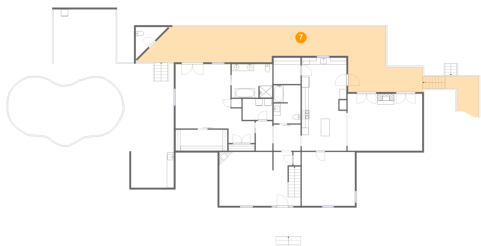
6 Floor 1 - W.i.c.



Dimensions: 15'0" x 6'1"
Area: 92 sq. ft
Counted as Living Area:
Yes

Heated: Yes
Finished: Yes
Enclosed: Yes
Contiguous:
Yes
Permitted: Yes
Wet Space: No
Addition: No
Conversion: No

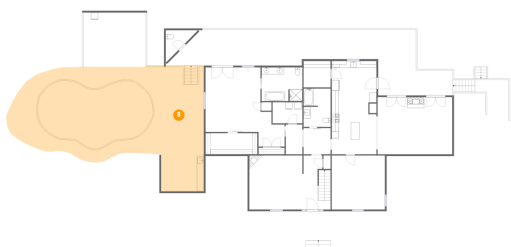
7 Floor 1 - Deck



Dimensions: 70'9" x 18'11"
Area: 936 sq. ft
Counted as Living Area: No

Heated: No
Finished: Yes
Enclosed: No
Contiguous: Yes
Permitted: Yes
Wet Space: No
Addition: No
Conversion: No

8 Floor 1 - Patio

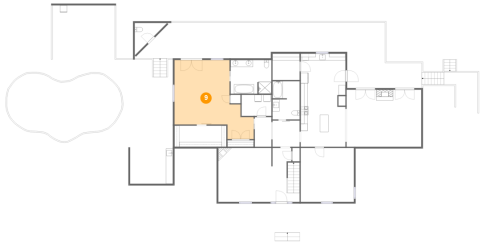


Dimensions: 57'3" x 27'6"
Area: 1490 sq. ft
Counted as Living Area: No

Heated: No
Finished: Yes
Enclosed: No
Contiguous: Yes
Permitted: Yes
Wet Space: No
Addition: No
Conversion: No

1150 Drewrys Hill Road, Stewartsville, Vinton, Bedford County, Virginia, United States, 24179

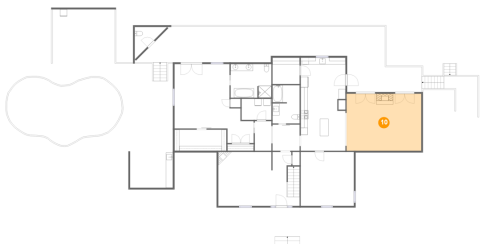
9 Floor 1 - Primary Bedroom



Dimensions: 22'11" x 22'10"
Area: 356 sq. ft
Counted as Living Area:
Yes

Heated: Yes
Finished: Yes
Enclosed: Yes
Contiguous:
Yes
Permitted: Yes
Wet Space: No
Addition: No
Conversion: No

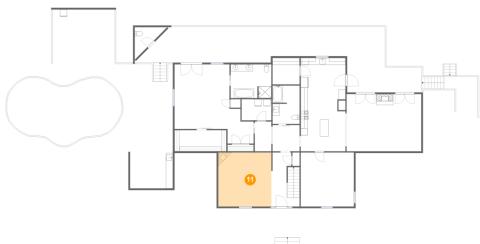
10 Floor 1 - Family Room



Dimensions: 21'8" x 16'5"
Area: 357 sq. ft
Counted as Living Area:
Yes

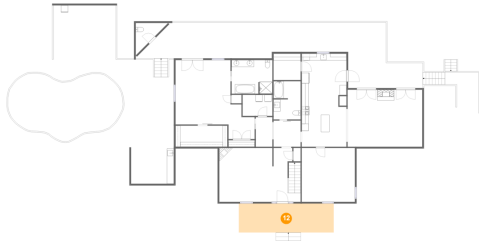
Heated: Yes
Finished: Yes
Enclosed: Yes
Contiguous:
Yes
Permitted: Yes
Wet Space: No
Addition: No
Conversion: No

11 Floor 1 - Living Room



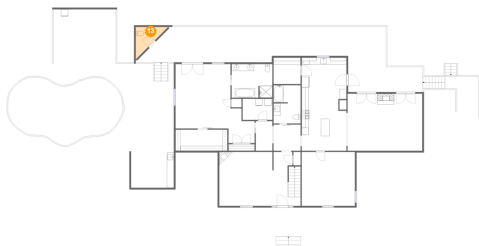
Dimensions: 15'5" x 15'7"
Area: 240 sq. ft
Counted as Living Area:
Yes

Heated: Yes
Finished: Yes
Enclosed: Yes
Contiguous:
Yes
Permitted: Yes
Wet Space: No
Addition: No
Conversion: No

**1150 Drewrys Hill Road, Stewartsville, Vinton,
Bedford County, Virginia, United States, 24179****12 Floor 1 - Porch**

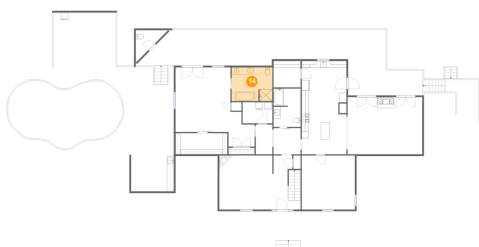
Dimensions: 27'6" x 8'4"
Area: 230 sq. ft
Counted as Living Area: No

Heated: No
Finished: Yes
Enclosed: No
Contiguous: Yes
Permitted: Yes
Wet Space: No
Addition: No
Conversion: No

13 Floor 1 - Wc

Dimensions: 9'2" x 9'3"
Area: 44 sq. ft
Counted as Living Area: No

Heated: Yes
Finished: Yes
Enclosed: Yes
Contiguous: No
Permitted: Yes
Wet Space: Yes
Addition: No
Conversion: No

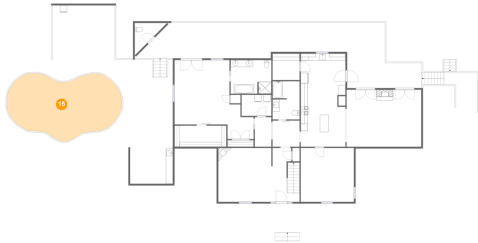
14 Floor 1 - Primary Bath

Dimensions: 11'10" x 9'9"
Area: 114 sq. ft
Counted as Living Area:
Yes

Heated: Yes
Finished: Yes
Enclosed: Yes
Contiguous:
Yes
Permitted: Yes
Wet Space: Yes
Addition: No
Conversion: No

1150 Drewrys Hill Road, Stewartsville, Vinton, Bedford County, Virginia, United States, 24179

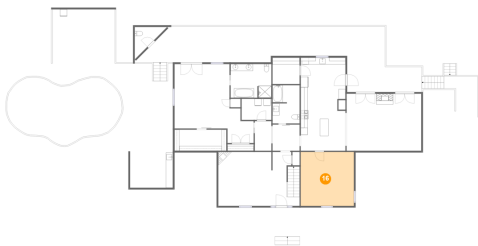
15 Floor 1 - Swimming Pool



Dimensions: 33'4" x 16'8"
Area: 501 sq. ft
Counted as Living Area: No

Heated: No
Finished: No
Enclosed: No
Contiguous: Yes
Permitted: No
Wet Space: No
Addition: No
Conversion: No

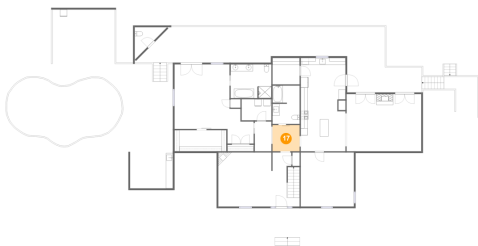
16 Floor 1 - Office



Dimensions: 15'5" x 15'7"
Area: 240 sq. ft
Counted as Living Area:
Yes

Heated: Yes
Finished: Yes
Enclosed: Yes
Contiguous:
Yes
Permitted: Yes
Wet Space: No
Addition: No
Conversion: No

17 Floor 1 - Hall



Dimensions: 7'10" x 7'7"
Area: 59 sq. ft
Counted as Living Area:
Yes

Heated: Yes
Finished: Yes
Enclosed: Yes
Contiguous:
Yes
Permitted: Yes
Wet Space: No
Addition: No
Conversion: No

1150 Drewrys Hill Road, Stewartsville, Vinton, Bedford County, Virginia, United States, 24179

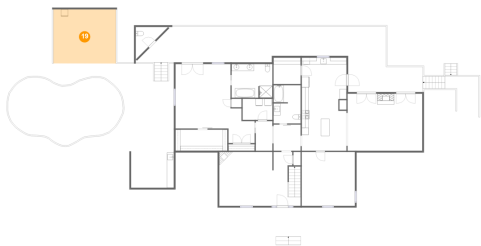
18 Floor 1 - Pantry



Dimensions: 7'10" x 7'8"
Area: 60 sq. ft
Counted as Living Area:
Yes

Heated: Yes
Finished: Yes
Enclosed: Yes
Contiguous:
Yes
Permitted: Yes
Wet Space: No
Addition: No
Conversion: No

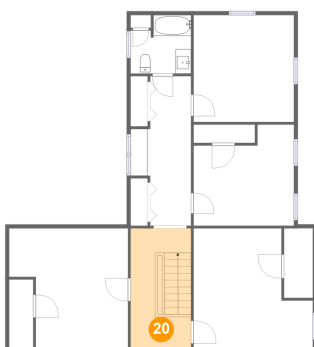
19 Floor 1 - Covered Deck



Dimensions: 18'1" x 15'8"
Area: 283 sq. ft
Counted as Living Area: No

Heated: No
Finished: Yes
Enclosed: No
Contiguous: Yes
Permitted: Yes
Wet Space: No
Addition: No
Conversion: No

20 Floor 2 - Hall

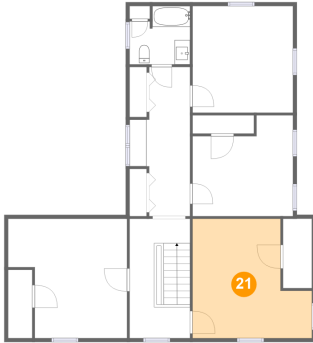


Dimensions: 7'10" x 15'5"
Area: 121 sq. ft
Counted as Living Area:
Yes

Heated: Yes
Finished: Yes
Enclosed: Yes
Contiguous:
Yes
Permitted: Yes
Wet Space: No
Addition: No
Conversion: No

1150 Drewrys Hill Road, Stewartsville, Vinton, Bedford County, Virginia, United States, 24179

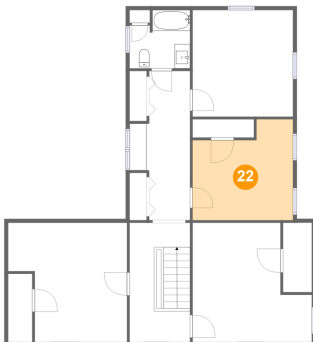
21 Floor 2 - Bedroom



Dimensions: 15'5" x 15'5"
Area: 200 sq. ft
Counted as Living Area:
Yes

Heated: Yes
Finished: Yes
Enclosed: Yes
Contiguous:
Yes
Permitted: Yes
Wet Space: No
Addition: No
Conversion: No

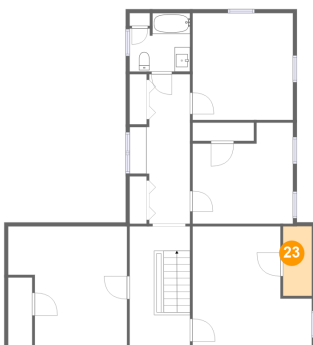
22 Floor 2 - Bedroom



Dimensions: 13'0" x 13'0"
Area: 147 sq. ft
Counted as Living Area:
Yes

Heated: Yes
Finished: Yes
Enclosed: Yes
Contiguous:
Yes
Permitted: Yes
Wet Space: No
Addition: No
Conversion: No

23 Floor 2 - W.i.c.

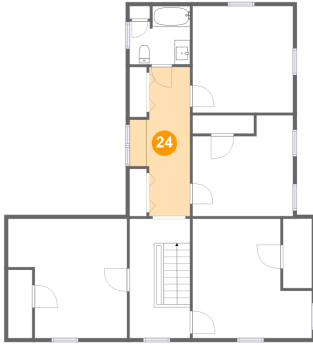


Dimensions: 3'9" x 8'11"
Area: 33 sq. ft
Counted as Living Area:
Yes

Heated: Yes
Finished: Yes
Enclosed: Yes
Contiguous:
Yes
Permitted: Yes
Wet Space: No
Addition: No
Conversion: No

1150 Drewrys Hill Road, Stewartsville, Vinton, Bedford County, Virginia, United States, 24179

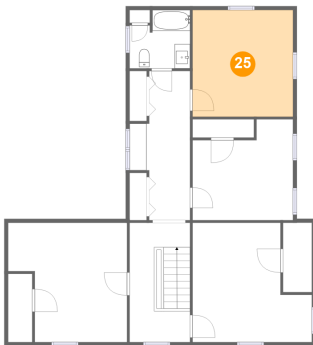
24 Floor 2 - Hall



Dimensions: 7'10" x 19'3"
Area: 117 sq. ft
Counted as Living Area: No

Heated: Yes
Finished: Yes
Enclosed: Yes
Contiguous: Yes
Permitted: Yes
Wet Space: No
Addition: No
Conversion: No

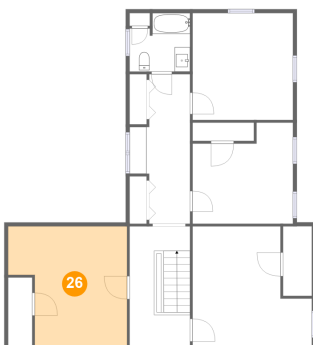
25 Floor 2 - Bedroom



Dimensions: 13'0" x 13'9"
Area: 179 sq. ft
Counted as Living Area:
Yes

Heated: Yes
Finished: Yes
Enclosed: Yes
Contiguous:
Yes
Permitted: Yes
Wet Space: No
Addition: No
Conversion: No

26 Floor 2 - Bedroom

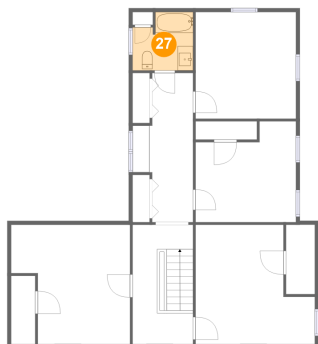


Dimensions: 15'5" x 15'5"
Area: 206 sq. ft
Counted as Living Area:
Yes

Heated: Yes
Finished: Yes
Enclosed: Yes
Contiguous:
Yes
Permitted: Yes
Wet Space: No
Addition: No
Conversion: No

1150 Drewrys Hill Road, Stewartsville, Vinton, Bedford County, Virginia, United States, 24179

27 Floor 2 - Bath



Dimensions: 7'10" x 7'6"
Area: 53 sq. ft
Counted as Living Area:
Yes

Heated: Yes
Finished: Yes
Enclosed: Yes
Contiguous:
Yes
Permitted: Yes
Wet Space: Yes
Addition: No
Conversion: No